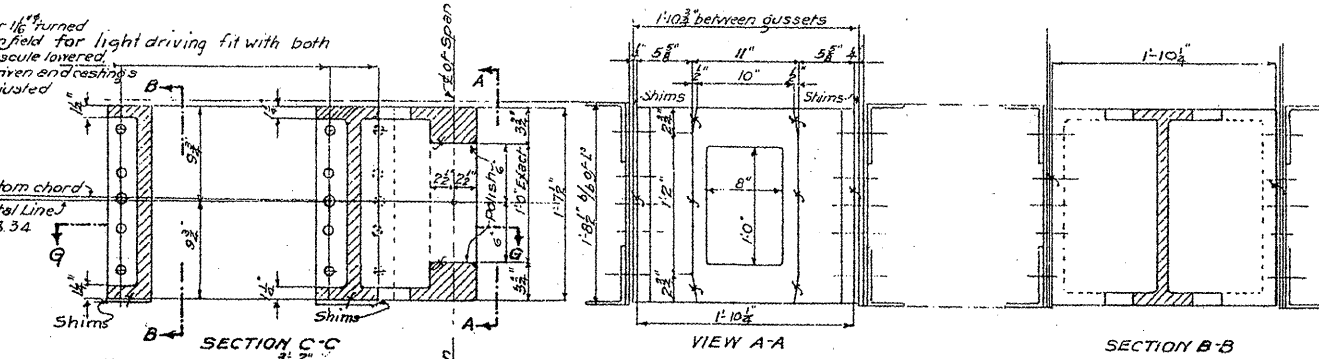


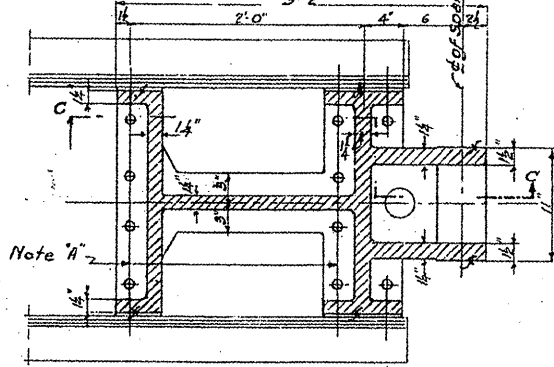
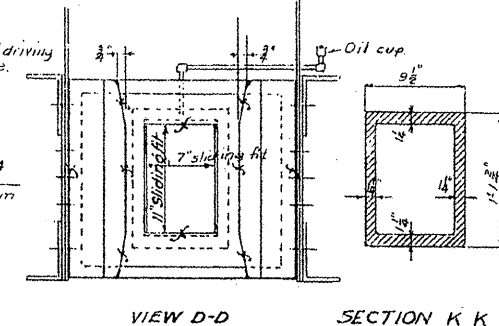
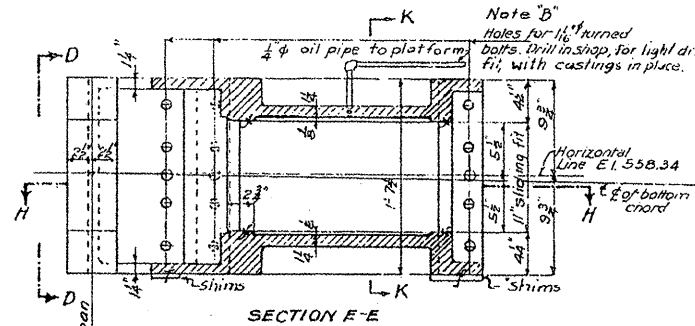
Note A

Holes for 1/2" turned bolts. Drill in field for light driving fit with both leaves of bascule lowered. Shear lock driven and castings properly adjusted.

Horizontal Line E1558.34



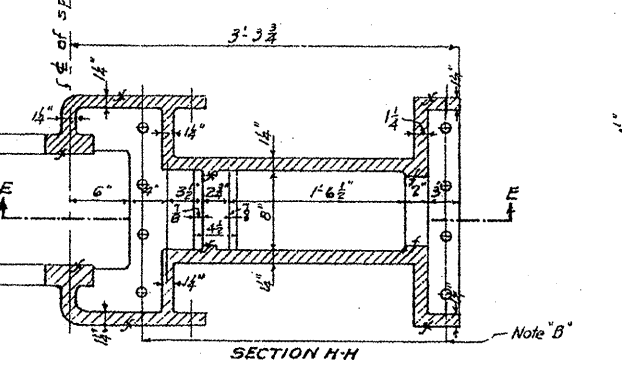
Note B
Holes for 1/2" turned bolts. Drill in shop for light driving fit with castings in place.



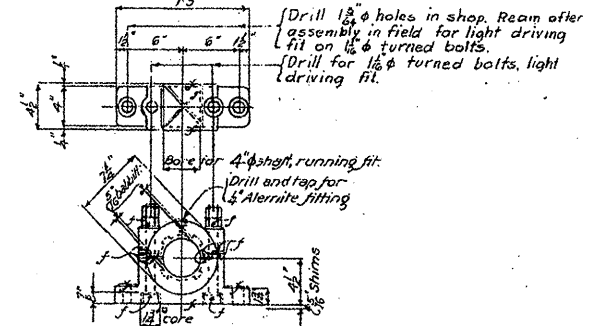
Note A

Note
Dimensions locating lock castings are given for a temperature of 60° F and should be varied according to the temperature of the time the castings are adjusted.

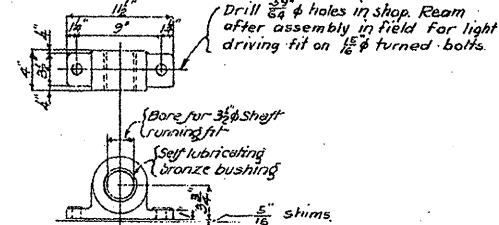
SECTION G-G CASTING FOR WEST LEAF 2 REQ'D. CAST STEEL



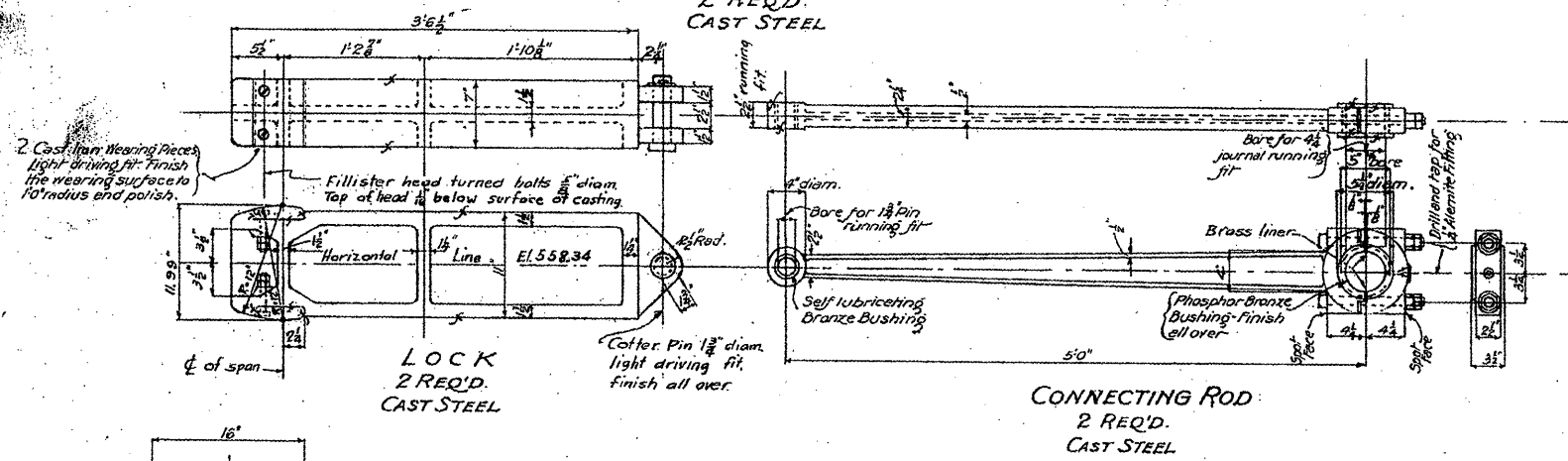
SECTION H-H CASTING FOR EAST LEAF 2 REQ'D. CAST STEEL



BEARING FOR CRANK 4 REQ'D. CAST STEEL



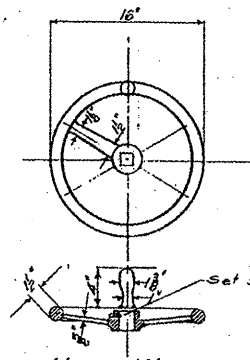
BEARING & SHAFT 3 REQ'D. CAST STEEL



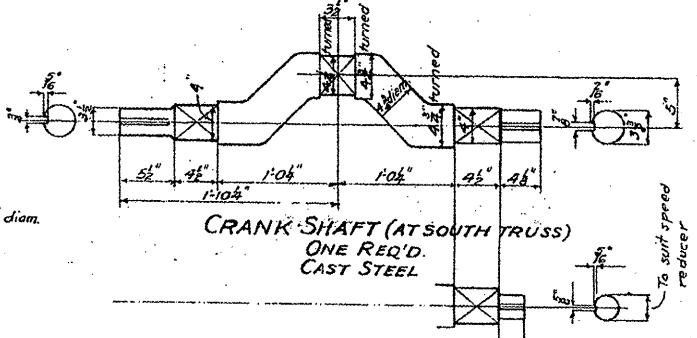
LOCK 2 REQ'D. CAST STEEL

CONNECTING ROD 2 REQ'D. CAST STEEL

Note:
For general machinery notes see Sheet No. 46.



Make square hole for sliding fit on shaft of speed reducer so that hand wheel may be removed and stored when not in use.



CRANK SHAFT (AT NORTH TRUSS) ONE REQ'D. CAST STEEL
SAME AS AT SOUTH TRUSS EXCEPT AS SHOWN

FOR INFORMATION ONLY

CENTER LOCK CASTINGS
DOUBLE LEAF TRUNNION BASCULE BRIDGE
OVER
THE ILLINOIS WATERWAY
AT
RUBY ST., JOLIET, ILL.

DESIGNED BY
THE SCHERZER ROLLING LIFT BRIDGE CO.
MONADNOCK BLOCK, CHICAGO, ILL.

DRAWN BY E.A.H.
CHECKED BY E.P.B.
SCALE: 1/8" = 1'-0"
DATE: APRIL 25, 1938
SHEET NO. 1243-13

FILE NAME =	USER NAME = midgjo	DESIGNED -	REVISED -	STATE OF ILLINOIS DEPARTMENT OF TRANSPORTATION	RUBY STREET OVER DES PLAINES RIVER SN 099-9901	F.A.P. RTE.	SECTION	COUNTY	TOTAL SHEETS	SHEET NO.	
ea:\pw\work\PIDOT\MIDYJA\08148931\dl1150	ea.dgn	DRAWN -	REVISED -			112	M-BOR-1	WILL	66	33	
PLOT SCALE = 1/8" = 1'-0"		CHECKED -	REVISED -			CONTRACT NO. 62714					
PLOT DATE = 6/27/2009		DATE -	REVISED -			ILLINOIS FED. AID PROJECT					