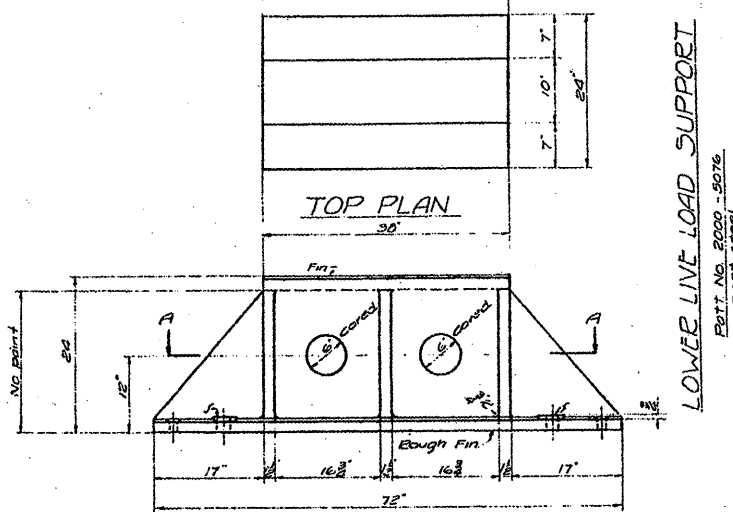
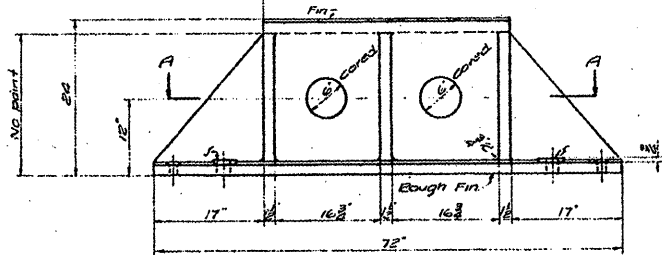


SECTION A-A

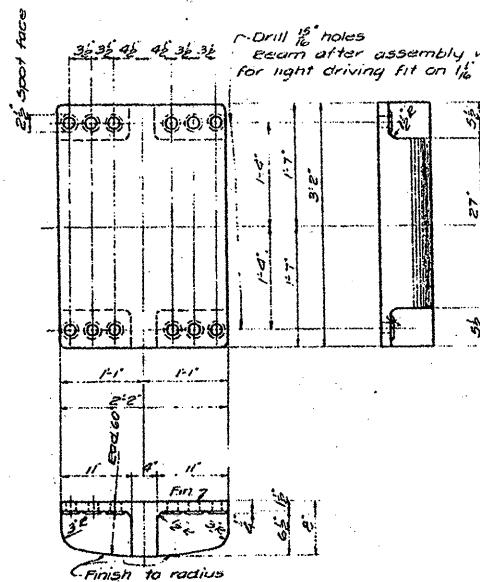


TOP PLAN



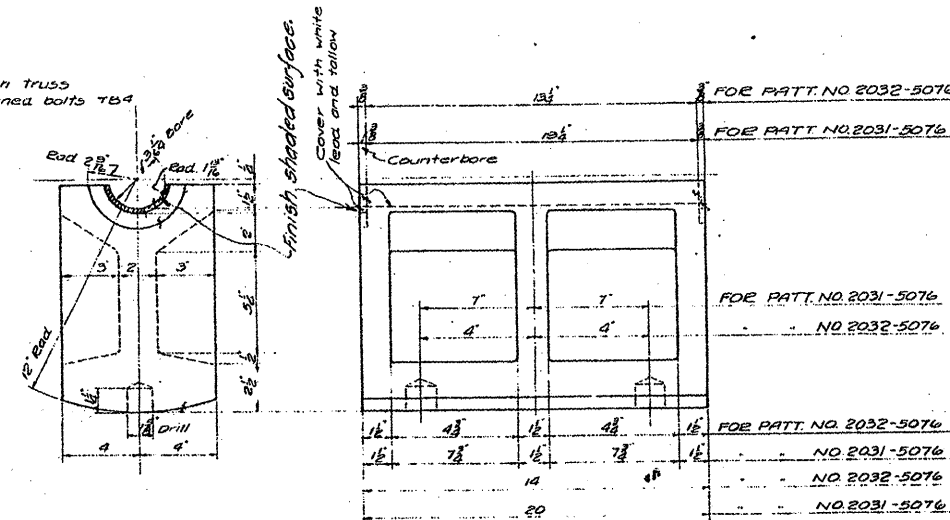
ELEVATION C-C  
DEVELOPED

LOWER LINE LOAD SUPPORT  
Patt. No. 2000-5076  
CAST STEEL

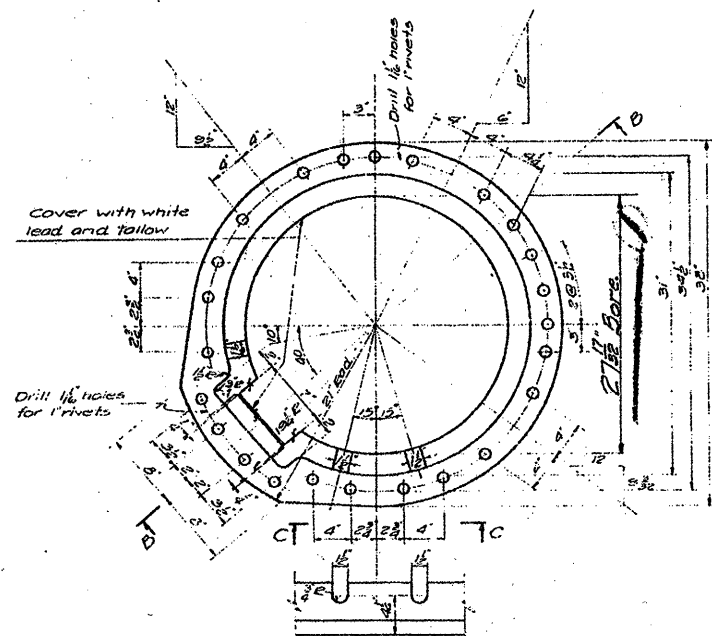


UPPER LINE LOAD SUPPORT

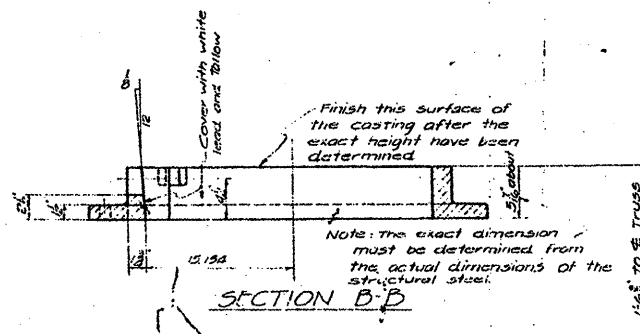
Patt. No. 2001-5076  
CAST STEEL



ROCKER  
PATT. NO. 2031-5076  
PATT. NO. 2032-5076  
CAST STEEL



ELEVATION C-C  
DEVELOPED



SECTION B-B

TRUNNION COLLAR  
Patt. No. 2002-5077, Eight Holes  
Patt. No. 2003-5077, Left Holes  
CAST STEEL

**FOR INFORMATION ONLY**

FILE NAME =	USER NAME = midjje	DESIGNED -	REVISED -
ca\pwwork\KPHWIDOT\MIDYJA\0148931\0111500-sht-plan.dgn		DRAWN -	REVISED -
		CHECKED -	REVISED -
		DATE -	REVISED -

STATE OF ILLINOIS  
DEPARTMENT OF TRANSPORTATION

RUBY STREET OVER DES PLAINES RIVER  
SN 099-9901  
SCALE: SHEET NO. 27 OF 30 SHEETS STA. TO STA.

F.A.P. RTE. 112	SECTION M-BDR-1	COUNTY WILL	TOTAL SHEETS 66	SHEET NO. 36
CONTRACT NO. 62714				
ILLINOIS FED. AID PROJECT				