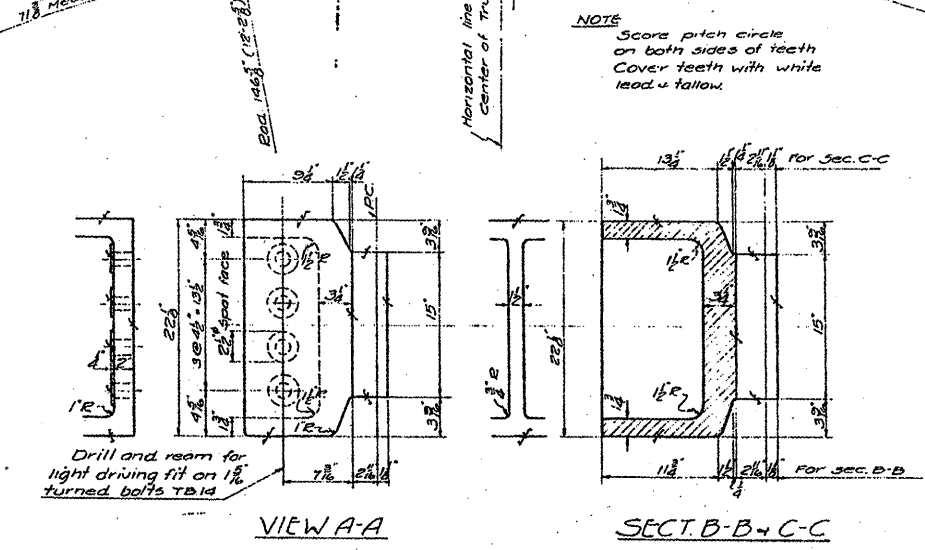
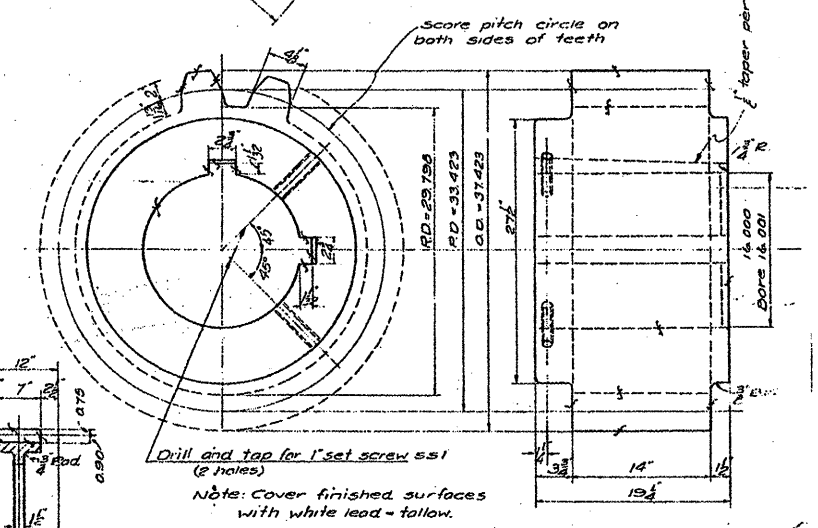


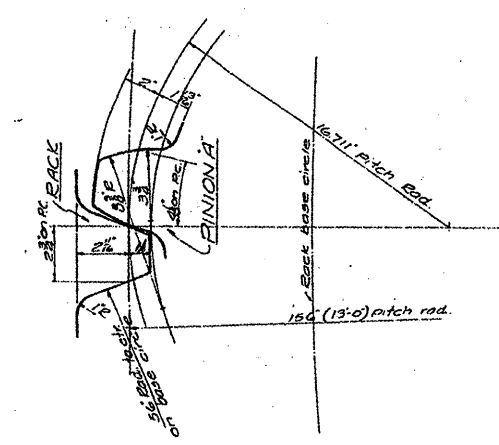
**REQUIRED**  
 8-RACK CASTINGS PATT. NO. 2036-5077  
 4-RACK CASTINGS PATT. NO. 2037-5077  
 4-GEARS D PATT. NO. 2038-5077  
 4-MAIN PINIONS PATT. NO. 2039-5077



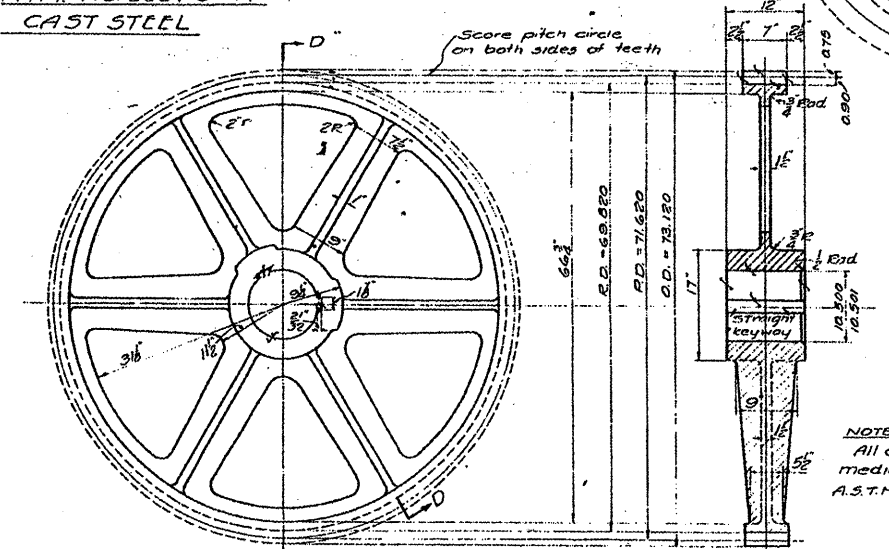
**RACK CASTINGS**  
 PATT. NO. 2036-5077  
 PATT. NO. 2037-5077  
 CAST STEEL



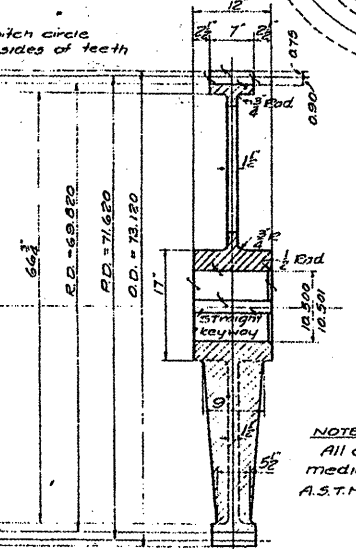
**15 SPECIAL 20° INVOLUTE TEETH T.C.P.**  
**MAIN PINION A**  
 PATT. NO. 2039-5077 RIGHT & LEFT HAND  
 CAST STEEL



**PROFILES OF RACK AND PINION A TEETH**  
 20° INVOLUTE CUT TEETH



**75 STD 20° INVOLUTE CUT STUB TEETH**  
 3° C.P. PD = 71.620  
**GEAR D**  
 PATT. NO. 2038-5077  
 CAST STEEL



**SECTION D-D**  
 Note: Cover finished surfaces with white lead + follow.

**FOR INFORMATION ONLY**

FILE NAME =	USER NAME = midjjo	DESIGNED - RTB	REVISED -	<b>STATE OF ILLINOIS DEPARTMENT OF TRANSPORTATION</b>	<b>RUBY STREET OVER DES PLAINES RIVER SN 099-9901</b>	F.A.P. RTE.	SECTION	COUNTY	TOTAL SHEETS	SHEET NO.
ca:\pwwork\kpw\DOT\MDY\JA\0148931\011158	-sht-plen.dgn	DRAWN -	REVISED -			112	M-BDR-1	WILL	66	38
PLOT SCALE = 1/8" = 1'-0"	CHECKED -	REVISIED -	REVISED -			CONTRACT NO. 62714				
PLOT DATE = 7/1/2009	DATE -	REVISED -	REVISED -			ILLINOIS FED. AID PROJECT				