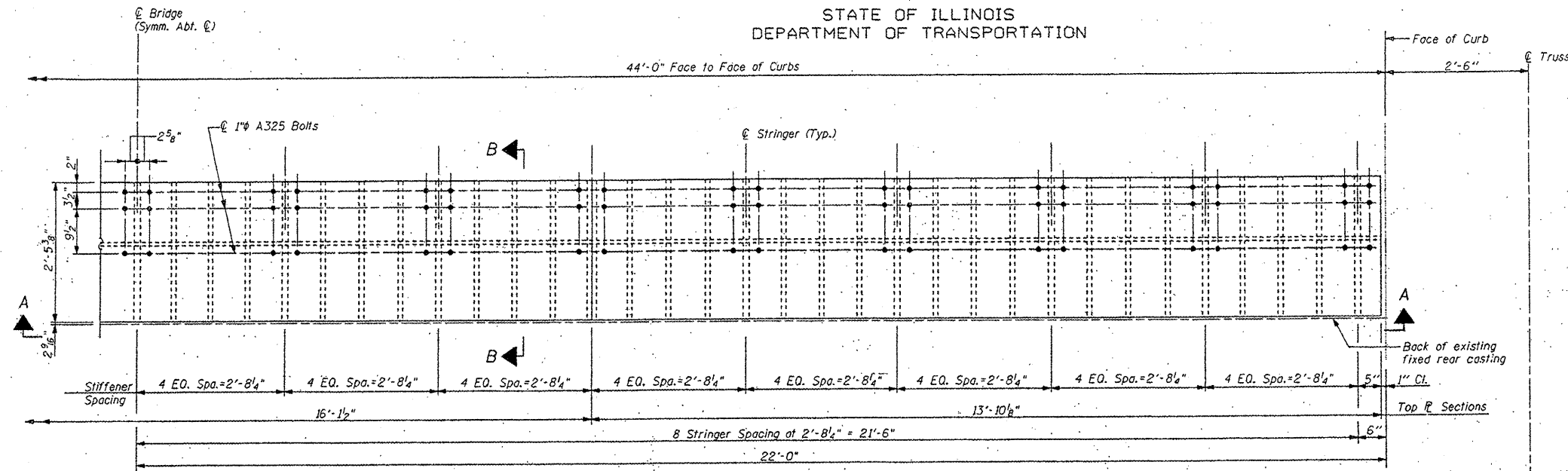
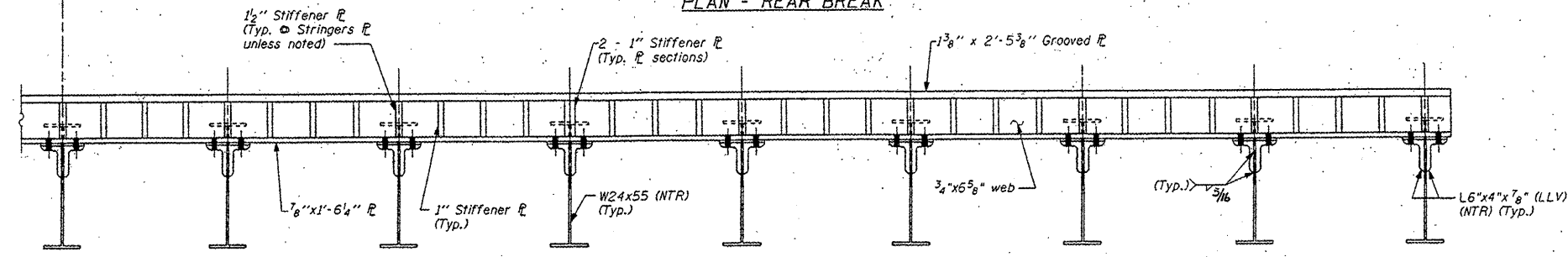


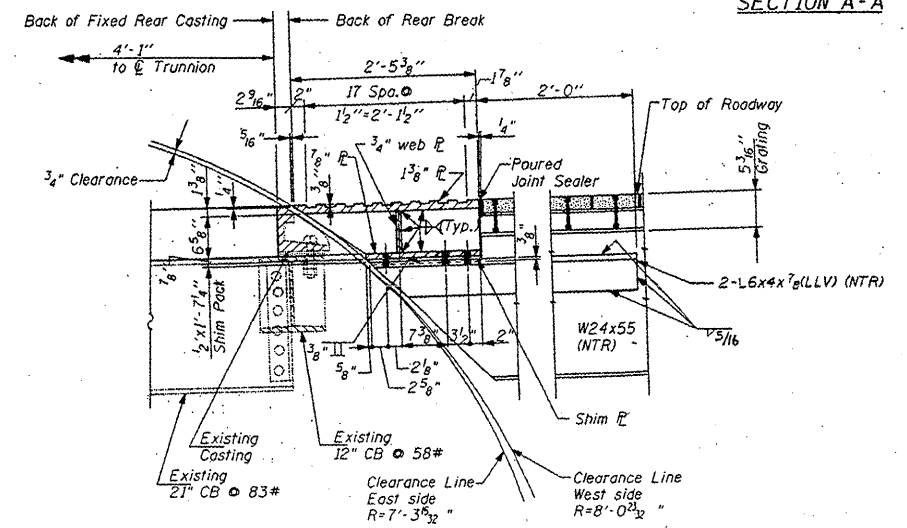
STATE OF ILLINOIS
DEPARTMENT OF TRANSPORTATION



PLAN - REAR BREAK



SECTION A-A



SECTION B-B

LEGEND
 (---) Existing member to remain
 (—) New member

MOVABLE PART
 REAR BREAK DETAILS
 RUBY STREET (F.A.P.112) OVER
 DES PLAINES RIVER
 WILL COUNTY
 STRUCTURE NUMBER 099-9901

FOR INFORMATION ONLY

FILE NAME =	USER NAME = mdyjo	DESIGNED -	REVISED -
cr:\pw\work\pwr\dct\mdyjo\0148931\011158	sht-plan.dgn	DRAWN -	REVISED -
PLOT SCALE = 1/8" = 1'-0"		CHECKED -	REVISED -
PLOT DATE = 6/23/2011		DATE -	REVISED -

STATE OF ILLINOIS
DEPARTMENT OF TRANSPORTATION

RUBY STREET OVER DES PLAINES RIVER
 SN 099-9901
 SCALE: SHEET NO. 2 OF 2 SHEETS STA. TO STA.

F.A.P. RTE. 112	SECTION M-BDR-1	COUNTY WILL	TOTAL SHEETS 66	SHEET NO. 41
			CONTRACT NO. 62714	
ILLINOIS FED. AID PROJECT				