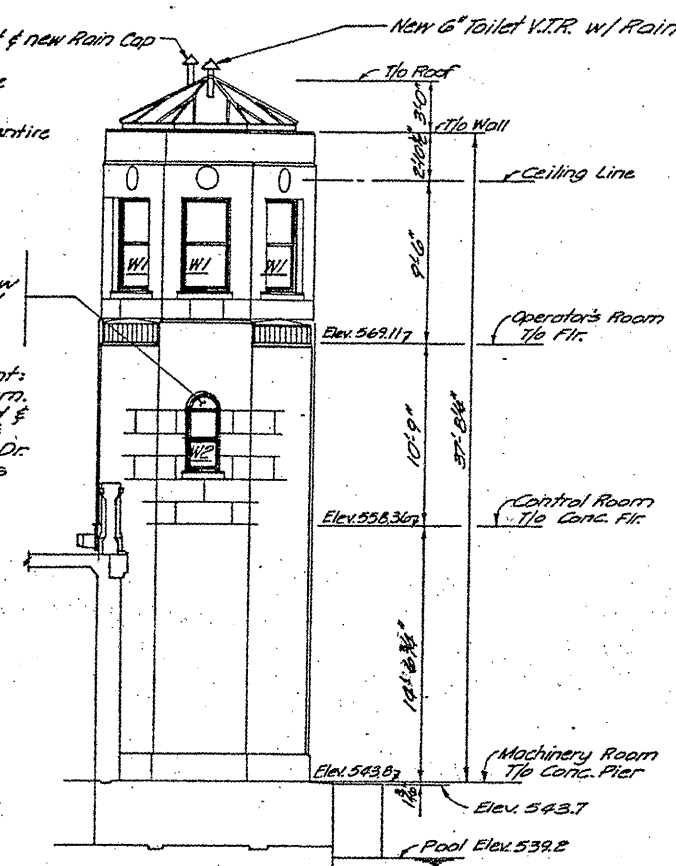
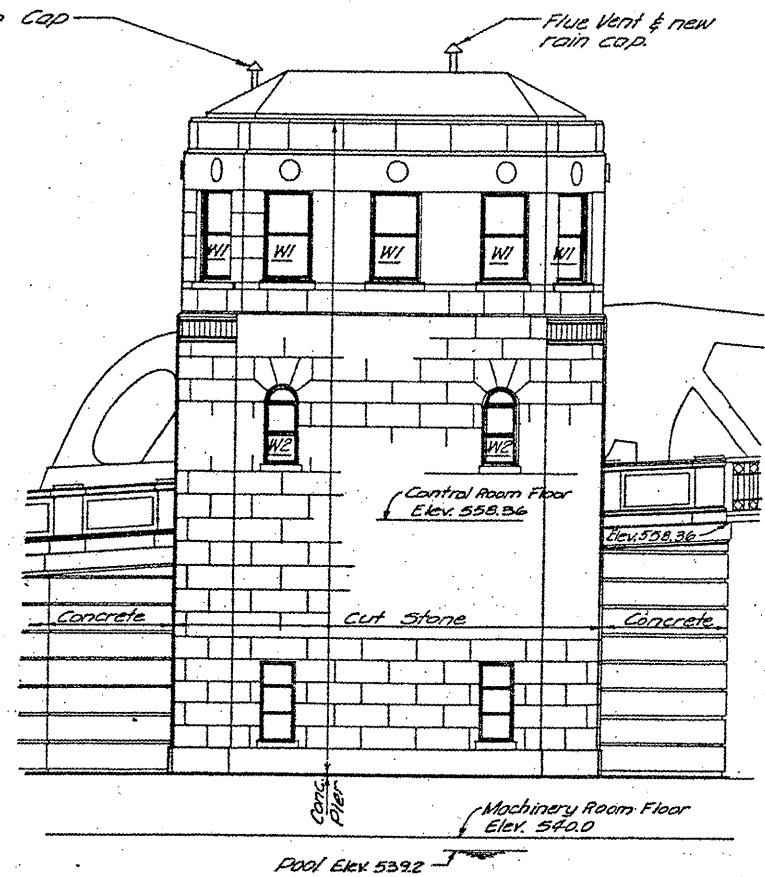


SOUTH ELEVATION



EAST ELEVATION
(West Elevation Similar)



NORTH ELEVATION - EAST PIER



BILL OF MATERIALS

ITEM	UNIT	QUANTITY
BRIDGE TENDER HOUSE REHABILITATION	L SUM	1

NOTE:
TUCK POINT ALL MORTAR JOINTS ON ALL FACES OF THE BUILDING. ALSO INCLUDE REPAIR OF SPALLED PORTIONS OF THE STONE AS SHOWN ON PICTURES.
COST OF TUCK POINTING INCLUDED IN THE COST OF BRIDGE TENDER HOUSE REHABILITATION.

FILE NAME =	USER NAME = mdjja	DESIGNED - RTD	REVISED -
es:\pwwork\pwwork\mdjja\0148931\0111584	sh-t-plan.dgn	DRAWN -	REVISED -
	PLOT SCALE = 1/8" = 1'-0"	CHECKED -	REVISED -
	PLOT DATE = 5/25/2011	DATE -	REVISED -

STATE OF ILLINOIS
DEPARTMENT OF TRANSPORTATION

RUBY STREET OVER DES PLAINES RIVER
TUCK POINTING OF EXTERIOR BRIDGE HOUSE

F.A.P. RTE. 112	SECTION M-BDR-1	COUNTY WILL	TOTAL SHEETS 66	SHEET NO. 46
SCALE: SHEET NO. 5 OF 5 SHEETS STA. TO STA.			ILLINOIS FED. AID PROJECT CONTRACT NO. 62714	