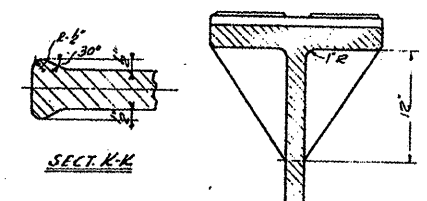
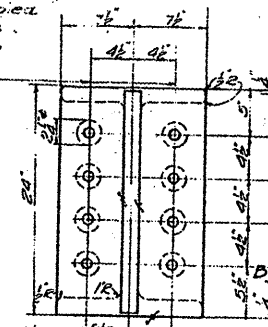


BEARING CAP
 PATT. NO. 2020B-5077
 CAST STEEL

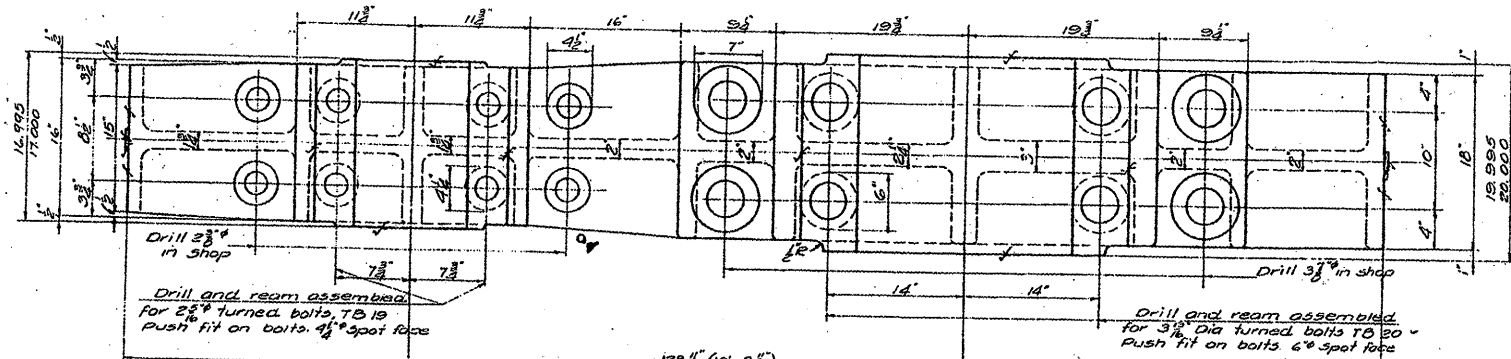


Drill and ream assembled for 1 1/2\"/>



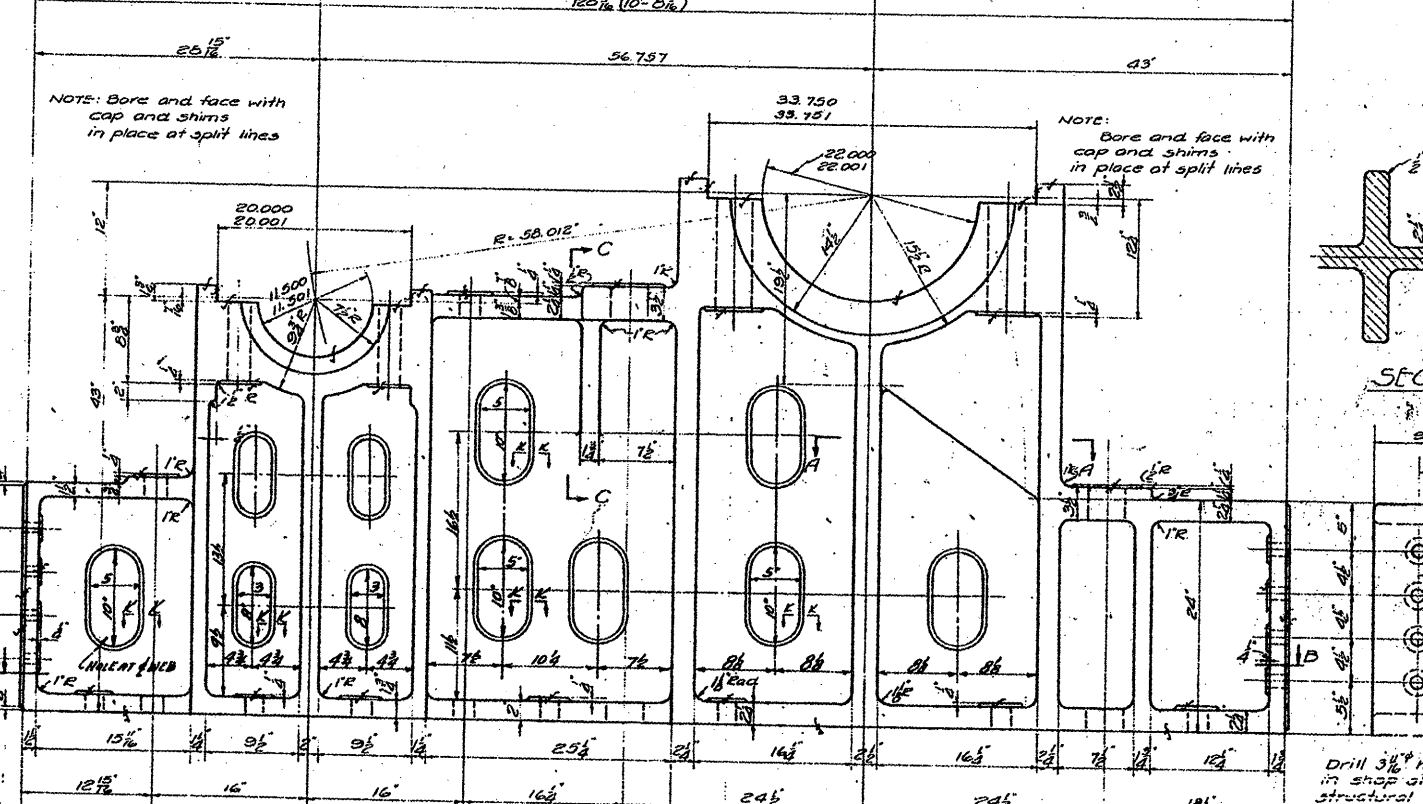
Drill 2 1/2\"/>

Drill 1 1/2\"/>

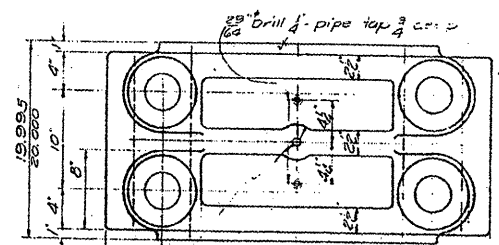


NOTE: Bore and face with cap and shims in place at split lines

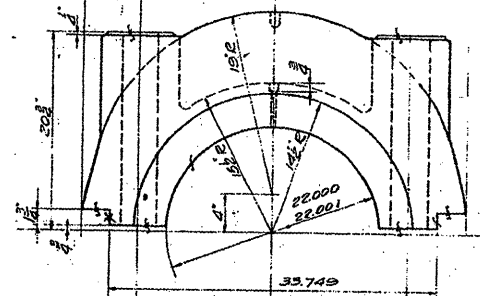
NOTE: Bore and face with cap and shims in place at split lines



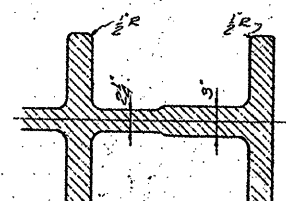
SECTION B-B
 COMBINATION BEARING
 PATT. NO. 2020-5077
 CAST STEEL



3/4\"/>



BEARING CAP
 PATT. NO. 2020A-5077



- REQUIRED**
- 4 COMB. BEARING PATT. NO. 2020-5077
 - 4 BEARING CAPS 2020A-5077
 - 4 2020B-5077

Drill and ream assembled for 1 1/2\"/>

NOTES:
 Specifications for steel for castings
 A.S.T.M. A27-24 Std. 1930 Class B
 Med. Grade Annealed.
 Cover finished surfaces with white lead and tallow.

Drill 3/8\"/>

Drill 1 1/2\"/>

FOR INFORMATION ONLY

FILE NAME =	USER NAME = midyjo
es:\pwwork\pwwdot\midyjo\148931\011150	sht-plan.dgn
PLOT SCALE = 103.1218 1/ IN.	
PLOT DATE = 7/1/2009	

DESIGNED -	REVISIONS
DRAWN -	REVISIONS
CHECKED -	REVISIONS
DATE -	REVISIONS

STATE OF ILLINOIS
 DEPARTMENT OF TRANSPORTATION

RUBY STREET OVER DES PLAINES RIVER
 SN 099-9901

SCALE: SHEET NO. 3 OF 10 SHEETS STA. TO STA.

F.A.P. RTE.	SECTION	COUNTY	TOTAL SHEETS	SHEET NO.
112	M-BDR-1	WILL	66	50
			CONTRACT NO. 62714	
ILLINOIS FED. AID PROJECT				