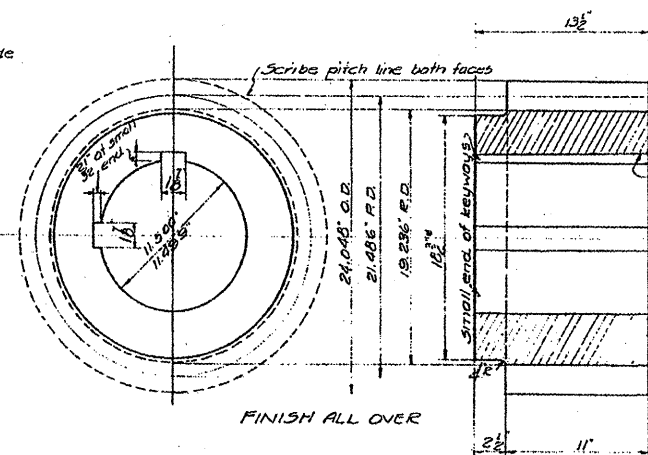
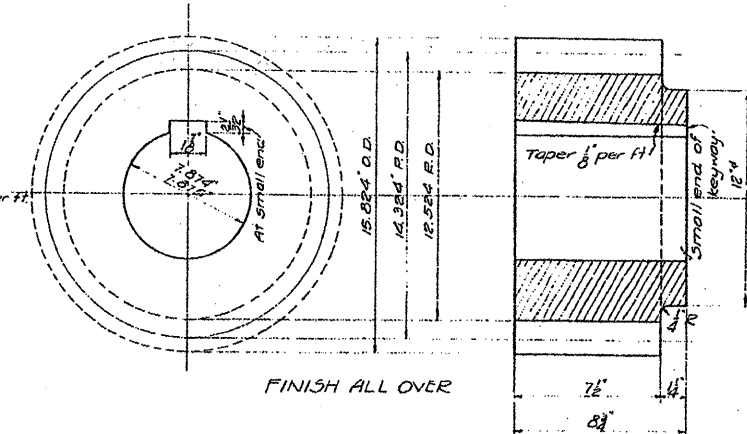


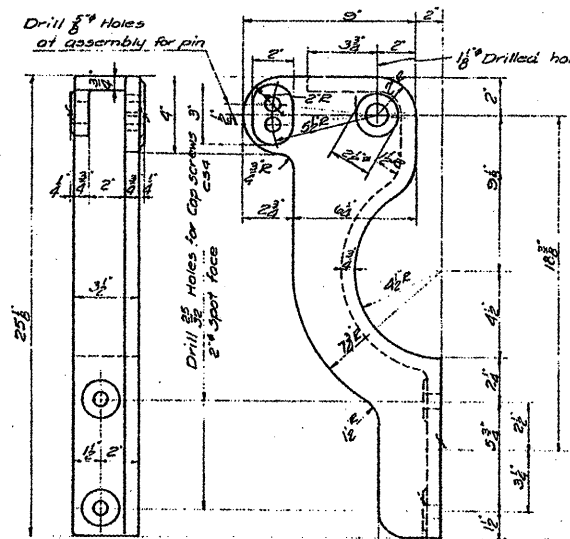
LEVER
PATT. NO. 2073-5077
CAST STEEL



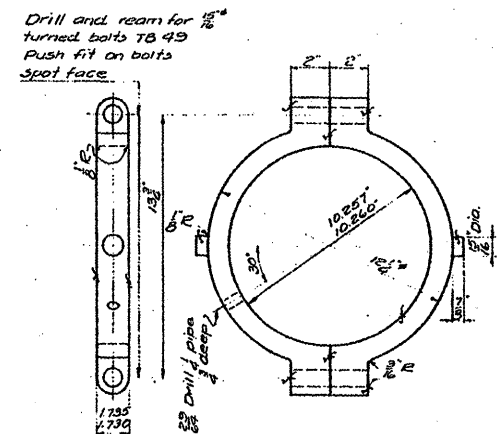
FINISH ALL OVER
15 Special 20° involute cut teeth
See sheet #9 for profile
4 1/2 C.R. 21.486" P.D.
PINION - MARK C
FORGED STEEL



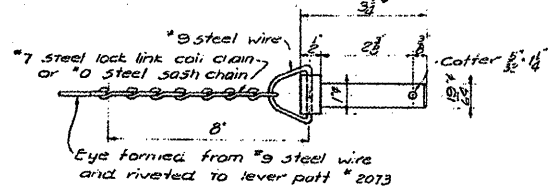
15 5/16 20° involute stud teeth
3" C.R. 14.324" P.D.
PINION - MARK E
FORGED STEEL



BRACKET
PATT. NO. 2071-5077 RIGHT HD.
PATT. NO. 2072-5077 LEFT HD.
CAST STEEL

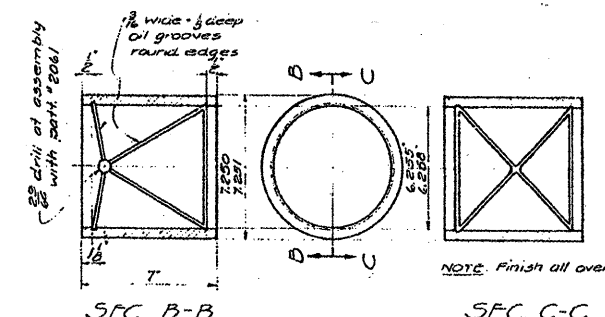


SHIFT RING
PATT. NO. 2064-5083
PHOS. BRONZE
Ship assembled with Part No. 2062-5077

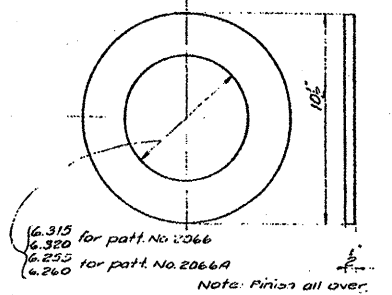


PIN - LP
MACHINERY STEEL

- REQUIRED LIST**
- 4 - LEVERS PATT. NO. 2073-5077
 - 2 - BRACKETS RIGHT HD. - 2071-5077
 - 2 - BRACKETS LEFT HD. - 2072-5077
 - 4 - BUSHINGS PATT. NO. 2065-5083
 - 4 - SHIFT RINGS - 2064-5083
 - 4 - PINIONS C
 - 6 - PINIONS E
 - 4 - PINS LP
 - 4 - THRUST RINGS - 2066-5083
 - 12 - THRUST RINGS - 2066A-5083



BUSHING
PATT. NO. 2065-5083
PHOS. BRONZE
Ship assembled with part no 2061



THRUST RINGS
PATT. NO. 2066-5083
PATT. NO. 2066A-5083

FOR INFORMATION ONLY

NOTES:
Steel forgings to be ASTM A18-30
Class C Std. 1930 Annealed.

FILE NAME =	USER NAME = midjje	DESIGNED -	REVISED -	STATE OF ILLINOIS DEPARTMENT OF TRANSPORTATION	RUBY STREET OVER DES PLAINES RIVER SN 099-9901	F.A.P. RTE.	SECTION	COUNTY	TOTAL SHEETS	SHEET NO.	
ci:\pw\mark\VP\DOT\MIDYJA\1014893\1011158	sh-t-plen.dgn	DRAWN -	REVISED -			112	M-BDR-1	WILL	66	54	
PLOT SCALE = 1/83.1218 "/>	IN.	CHECKED -	REVISED -			CONTRACT NO. 62714					
PLOT DATE = 7/1/2009	DATE -	REVISED -	REVISED -			ILLINOIS FED. AID PROJECT					
					SCALE:	SHEET NO. 7 OF 10 SHEETS	STA.	TO STA.			