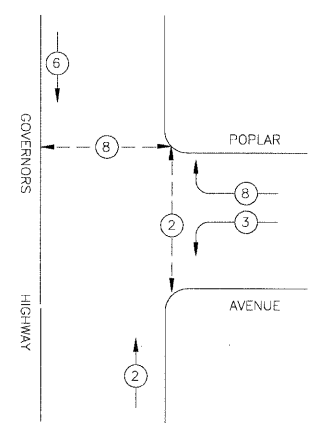
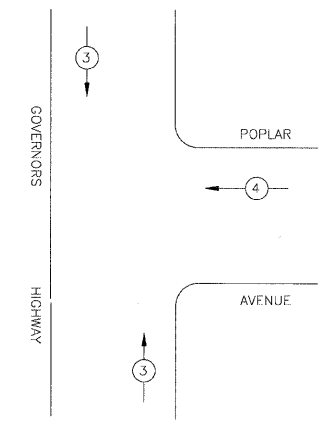


PROPOSED CONTROLLER SEQUENCE



EMERGENCY VEHICLE PREEMPTION SEQUENCE



LEGEND

- ⊛ DUAL ENTRY PHASE
- ⊛ PEDESTRIAN PHASE
- \* NUMBER REFERS TO ASSOCIATED PHASE

PHASE DESIGNATION DIAGRAM

PROPOSED EMERGENCY VEHICLE PREEMPTOR		
EMERGENCY VEHICLE PREEMPTOR	3	4
MOVEMENT	↑ ↓	← →

TRAFFIC SIGNAL SCHEDULE OF QUANTITIES

CODE NUMBER	PAY ITEM	UNIT	TOTAL QUANTITY
81000700	CONDUIT IN TRENCH, 2 1/2" DIA., GALVANIZED STEEL	FOOT	6
81900200	TRENCH AND BACKFILL FOR ELECTRICAL WORK	FOOT	21
85000200	MAINTENANCE OF EXISTING TRAFFIC SIGNAL INSTALLATION	EACH	1
87301215	ELECTRIC CABLE IN CONDUIT, SIGNAL NO. 14 2C	FOOT	421
87301225	ELECTRIC CABLE IN CONDUIT, SIGNAL NO. 14 3C	FOOT	421
87502440	TRAFFIC SIGNAL POST, GALVANIZED STEEL, 10 FT.	EACH	1
87800100	CONCRETE FOUNDATION, TYPE A	FOOT	4
87900200	DRILL EXISTING HANDHOLE	EACH	1
88102717	PEDESTRIAN SIGNAL HEAD, LED, 1-FACE, BRACKET MOUNTED WITH COUNTDOWN TIMER	EACH	2
88102747	PEDESTRIAN SIGNAL HEAD, LED, 2-FACE, BRACKET MOUNTED WITH COUNTDOWN TIMER	EACH	1
88500100	INDUCTIVE LOOP DETECTOR	EACH	1
88600100	DETECTOR LOOP, TYPE 1	FOOT	114
88800100	PEDESTRIAN PUSH-BUTTON	EACH	4

CABLE PLAN LEGEND (NOTE: SEE DISTRICT 1 STANDARD TRAFFIC SIGNAL DESIGN DETAILS SHEET FOR FULL LEGEND)

I.D.O.T. TRAFFIC SIGNAL INSTALLATION ELECTRICAL SERVICE REQUIREMENTS				
TYPE	INCANDESCENT/LED NO LAMPS	INCANDESCENT/LED WATTAGE	%OPERATION	TOTAL WATTAGE
SIGNAL (RED)	12/0	135/17	0.50	810
(YELLOW)	12/0	135/25	0.25	405
(GREEN)	4/0	135/15	0.25	135
ARROW	8/0	135/12	0.25	270
PED. SIGNAL	0/2	90/25	1.00	50
CONTROLLER	1	100	1.00	100
ILLUM. SIGN	-	84	0.50	-
STREET LIGHTS	-	250	0.50	-
FLASHER	-	-	0.50	-
TOTAL =				1770

FOUNDATION (DEPTH)	(FT.)	CABLE SLACK	(FT.)	VERTICAL	(FT.)
TYPE A - POST	4	HANDHOLE	6.5	ALL FOUNDATIONS	3.5
D - CONTROLLER	4	DOUBLE HANDHOLE	13	MAST ARM (L) POLE	20'±L-2'
E - M. ARM POLE	-	SIGNAL POST	2	BRACKET MOUNTED	13
24"	10"	CONTROLLER CAB.	6	PED. PUSHBUTTON	4
30"	15	FIBER OPTIC	13	ELECTRIC SERVICE	13.5
		ELECTRIC SERVICE	1	SERVICE TO GROUND	13.5
		GROUND CABLE	1	POST MOUNTED	6

ENERGY COSTS BILLED TO: VILLAGE OF RICHTON PARK  
 (ADDRESS) 4455 SAUK TRAIL  
 RICHTON PARK, IL 60471

ENERGY SUPPLY CONTACT: JERRY KUEMPEL  
 PHONE: (630)437-2212  
 COMPANY: COMMONWEALTH EDISON

COPYRIGHT © 2011 BY BAXTER & WOODMAN, INC.  
 STATE OF ILLINOIS - PROFESSIONAL DESIGN FIRM  
 NO. - 64-028/2011  
 488ccc  
 ...:\p01\dr\ver\p02233.dwg  
 1:\projects\3778\3778-00\cable.sht



USER NAME = 488ccc	DESIGNED - CAC	REVISED - PER IDOT 5-11-11
FILE NAME = 100140 Cable.sht	DRAWN - BCD	REVISED -
PLOT DATE = 6/28/2011	CHECKED - TMS	REVISED -
	DATE - 04-22-11	REVISED -

**VILLAGE OF RICHTON PARK, ILLINOIS  
 FAU 3778 GOVERNORS HIGHWAY  
 INTERSECTION IMPROVEMENTS**

SCALE: NONE		STA. TO STA.	
-------------	--	--------------	--

F.A.U. RTE. 3778	SECTION 07-00042-00-CH	COUNTY COOK	TOTAL SHEETS 20	SHEET NO. 7
FED. ROAD DIST. NO.	C-91-177-07	CONTRACT NO. 63489	ILLINOIS FED. AID PROJECT CMW-80031776	