

**GENERAL NOTES**

Reinforcement bars shall conform to the requirements of ASTM A 706 Gr 60. See Special Provisions.

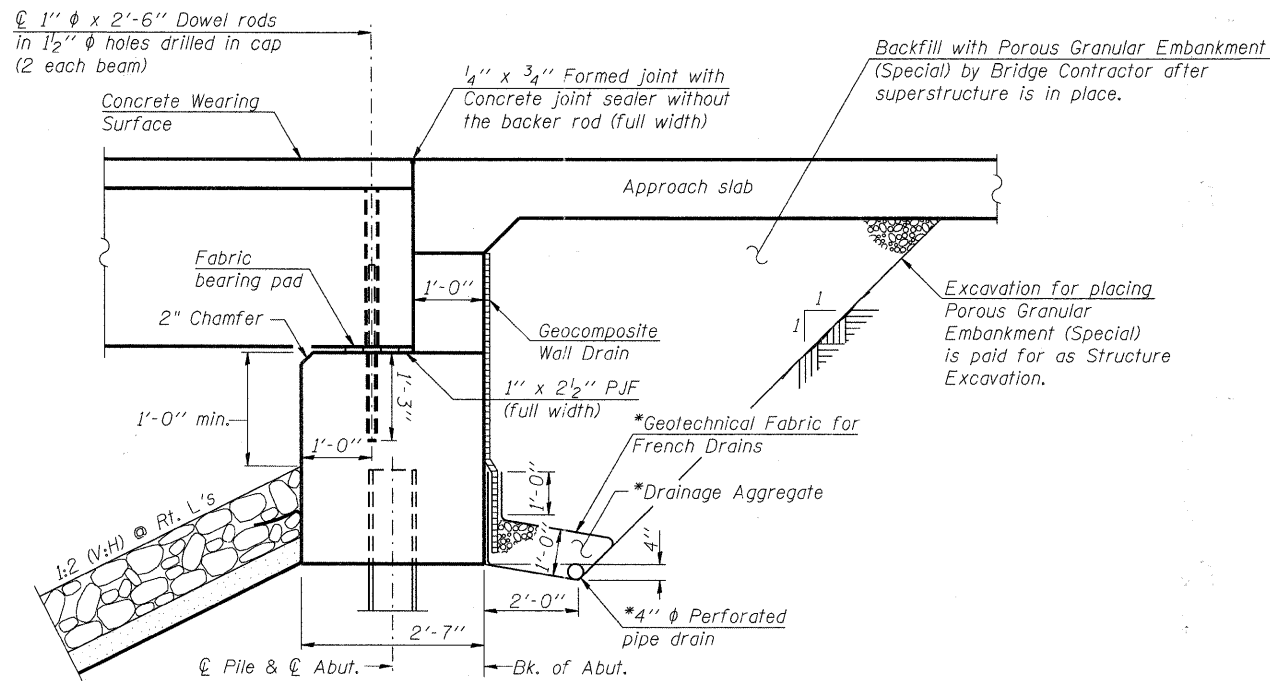
Reinforcement bars designated (E) shall be epoxy coated.

Layout of slope protection system may be varied in the field to suit ground conditions as directed by the Engineer. The Contractor shall adjust final rip rap adjacent to stream gage to provide / maintain access to gage station doorway.

The Contractor shall obtain a construction permit from the Illinois Department of Natural Resources (IDNR), Office of Water Resources for any temporary construction activity placed in the water except cofferdams. This shall include the placement of material for run-arounds, causeways, etc. Any permit application by the Contractor shall refer to the IDOT Floodway permit and ACOE Section 404 permit numbers as shown in the contract documents.

The existing abutment caps, pier caps and piles shall be removed 2'-0" below finished grade (or streambed) at a minimum, and as necessary to construct the new abutments, piers and / or rip rap. Cost included under Removal of Existing Structures.

Slipforming of parapets is not allowed

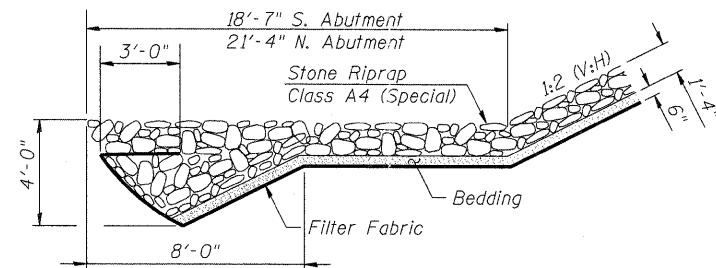


**SECTION THRU ABUTMENT**

(Horiz. dim. @ Rt. L's)

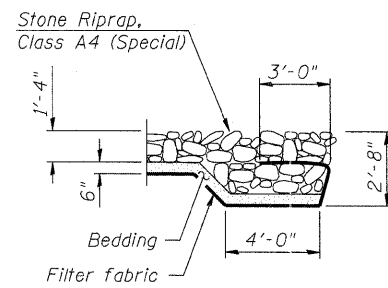
\*Included in the cost of Pipe Underdrains for Structures.

Note: All drainage system components shall extend to 2'-0" from the end of each wingwall except an outlet pipe shall extend until intersecting with the side slopes or retaining wall as shown on S-3. Except for the southwest corner, the pipes shall drain into concrete headwalls. The Porous Granular Embankment (Special) shall stop at the limits of the select granular backfill for the Segmental Concrete Block Wall at the Southwest corner. (See Article 601.05 of the Standard Specifications and Highway Standard 601101). See S-3 and S-4.



**SECTION A-A**

(See S-1)



**SECTION B-B**

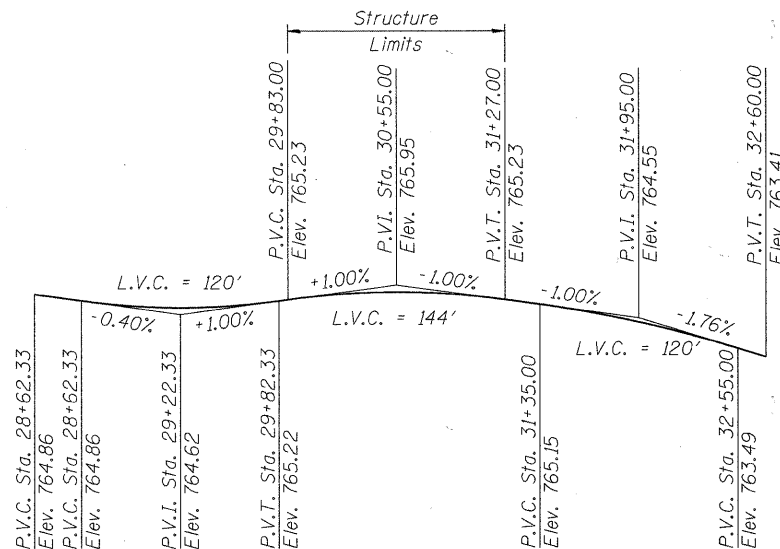
(See S-1)

**INDEX OF SHEETS**

- S-1 General Plan and Elevation
- S-2 Bill of Material and General Notes
- S-3 Southwest Retaining Wall Details
- S-4 Northeast Retaining Wall Details
- S-5 Bridge Approach Slab Details
- S-6 Bridge Approach Slab Details
- S-7 Approach Pavement Elevations
- S-8 Deck Plan and Cross Section
- S-9 Superstructure Details
- S-10 Superstructure Details
- S-11 West Parapet Elevation
- S-12 East Parapet Elevation
- S-13 Railing Details
- S-14 South Abutment Details
- S-15 North Abutment Details
- S-16 Pier 1 Details
- S-17 Pier 2 Details
- S-18 Metal Shell Pile Details
- S-19 Soil Boring Logs
- S-20 Soil Boring Logs

**TOTAL BILL OF MATERIAL**

TOTAL BILL OF MATERIALS				
ITEM	UNIT	SUPER	SUB	TOTAL
Porous Granular Embankment (Special)	Cu. Yds.		87	87
Filter Fabric	Sq. Yds.		1,347	1,347
Protective Coat	Sq. Yds.	842		842
Removal of Existing Structures	Each	0.5	0.5	1
Structure Excavation	Cu. Yds.		490	490
Concrete Structures	Cu. Yds.		202.6	202.6
Concrete Superstructures	Cu. Yds.	122.0		122.0
Bridge Deck Grooving	Sq. Yds.	778.0		778.0
Concrete Encasement	Cu. Yds.		15.4	15.4
Precast, Prestressed Concrete Deck Beams, 27 inch	Sq. Ft.	6,740		6,740
Reinforcement Bars, Epoxy Coated	Pounds	38,870	16,470	55,340
Bicycle Railing	Foot	241		241
Parapet Railing	Foot	166		166
Furnishing Metal Shell Piles 14"x0.250"	Foot		2,296	2,296
Driving Piles	Foot		2,296	2,296
Test Pile, Metal Shells	Each		4	4
Name Plates	Each	1		1
Geocomposite Wall Drain	Sq. Yds.		55	55
Concrete Headwall For Pipe Drains	Each		3	3
Underwater Structure Excavation Protection, Special-Location 1	Each		1	1
Underwater Structure Excavation Protection, Special-Location 2	Each		1	1
Stone Riprap, Class A4 (Special)	Ton		790	790
Concrete Wearing Surface, 5"	Sq. Yds.	750		750
Asbestos Bearing Pad Removal	Each	66		66
Segmental Concrete Block Wall	Sq. Ft.		1200	1200
Pipe Underdrains for Structures, 4"	Foot		144	144



**PROFILE GRADE**

(along centerline roadway)

NIPPERSINK CREEK  
BUILT 20\_\_ BY  
VILLAGE OF SPRING GROVE  
SEC. 07-00012-00-BR  
F.A.U. RT. 0157 STA. 30+56.78  
STRUCTURE NO. 056-6123  
LOADING HL-93

**NAME PLATE**

See Std. 515001

DESIGNED	JMW
CHECKED	RGD
DRAWN	RCB
CHECKED	RGD

**BILL OF MATERIAL AND GENERAL NOTES**

**WINN ROAD  
OVER NIPPERSINK CREEK  
F.A.U. ROUTE 0157  
SECTION NO. 07-00012-00-BR  
MCHENRY COUNTY  
STATION 30+56.78  
STRUCTURE NO. 056-6123**

DATE: 6/23/11

SHEET NO. <b>S-2</b>  <b>S-20</b> SHEETS	F.A.U. RTE.	SECTION	COUNTY	TOTAL SHEETS	SHEET NO.
	0157	07-00012-00-BR	MCHENRY	41	14
CONTRACT NO. 63544					
FED. ROAD DIST. NO. 1		ILLINOIS	FED. AID PROJECT	BRM-8003 (921)	

**SEC GROUP INC.**  
An HR Green Company  
420 N. Front Street, McHenry, IL 60050  
1.815.385.1778 f.815.385.1781  
www.secgroupinc.com  
McHenry, IL • Yorkville, IL • New Lenox, IL • Chicago, IL

FILE NAME: 090212-01en.dgn  
PLOT DRIVER: pdfplot  
PEN TABLE: standard-trans.tbl