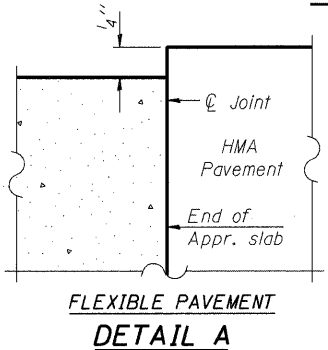


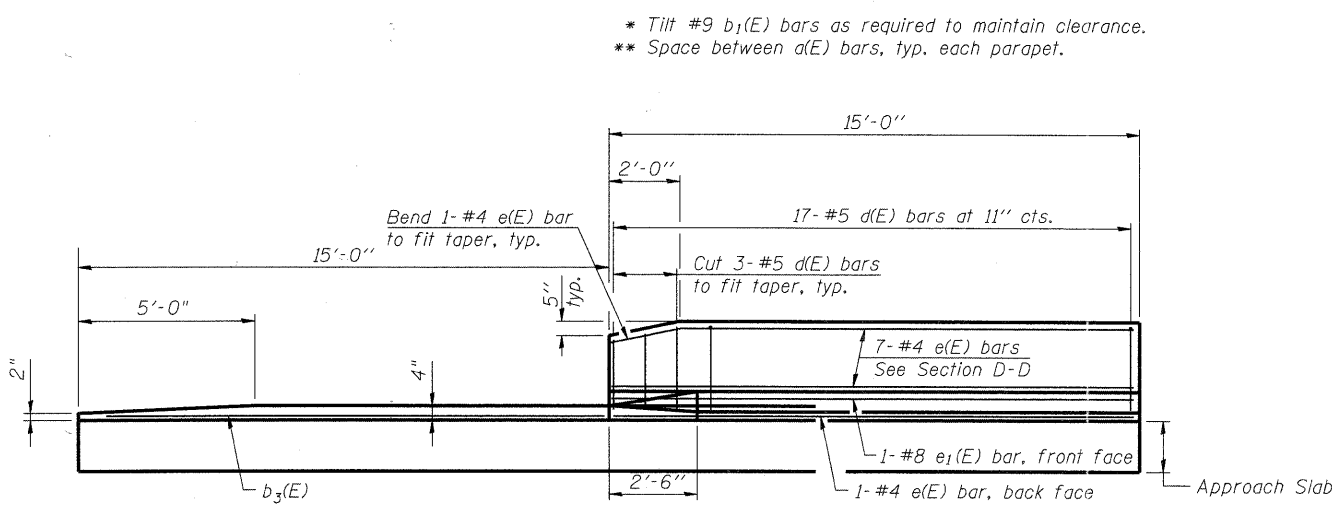
**SOUTH APPROACH SLAB PLAN**

**NORTH APPROACH SLAB PLAN**

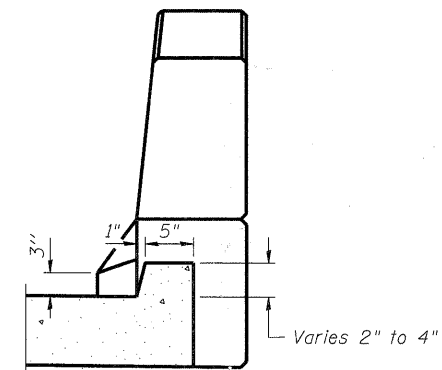
Notes:  
See sheet S-6 for Sections C-C & D-D.  
a(E) and a1(E) bar spacings measured along  $\varnothing$  Rdwy.



**FLEXIBLE PAVEMENT  
DETAIL A**



**VIEW E-E (Section cut on Sheet S-6)**



**VIEW B-B**

\* Tilt #9 b1(E) bars as required to maintain clearance.  
\*\* Space between a(E) bars, typ. each parapet.

DESIGNED	JMW
CHECKED	RGD
DRAWN	RCB
CHECKED	RGD

**SEC GROUP, INC.**  
An HR Green Company  
420 N. Front Street, Mchenry, IL 60060  
L 815.385.1778 F 815.385.1781  
www.secgroupinc.com  
McHenry, IL • Yorkville, IL • New Lenox, IL • Chicago, IL

SHEET NO. <b>S-5</b>	F.A.U. RTE.	SECTION	COUNTY	TOTAL SHEETS	SHEET NO.
	0157	07-00012-00-BR	McHENRY	41	17
S-20 SHEETS					
CONTRACT NO. 63544					
FED. ROAD DIST. NO. 1 ILLINOIS FED. AID PROJECT BRM-8003 (921)					

**BRIDGE APPROACH SLAB DETAILS  
WINN ROAD  
OVER NIPPERSINK CREEK  
F.A.U. ROUTE 0157  
SECTION NO. 07-00012-00-BR  
MCHENRY COUNTY  
STATION 30+56.78  
STRUCTURE NO. 056-6123**

DATE: 6/23/11