

F.A.P. RTE.	SECTION	COUNTY	TOTAL SHEETS	SHEET NO.
335	11-00114-00-CH	McHENRY	56	1

#4 = 60
Total Sheets

STATE OF ILLINOIS
DEPARTMENT OF TRANSPORTATION
DIVISION OF HIGHWAYS

PLANS FOR PROPOSED
FEDERAL AID HIGHWAY

FAP ROUTE 335
ILLINOIS ROUTE 176 AT BRIARWOOD ROAD / OHNSTAD ROAD
SECTION 11-00114-00-CH
PROJECT NO. M-9003(715)
INTERSECTION IMPROVEMENT
McHENRY COUNTY
JOB NO. C-91-114-11



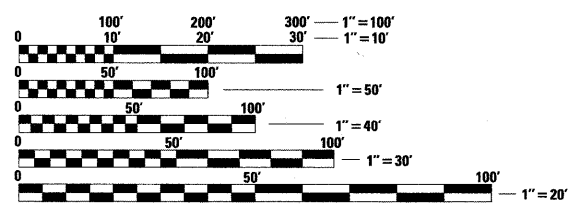
LOCATION OF SECTION INDICATED THUS: - [Symbol] -

INDEX TO SHEETS

1	COVER SHEET
2	GENERAL NOTES AND LEGEND
3-3D	SUMMARY OF QUANTITIES
4	TYPICAL SECTIONS
5	ALIGNMENT, TIES AND BENCHMARKS
6-8	EROSION CONTROL AND LANDSCAPING PLAN
9-10	MAINTENANCE OF TRAFFIC PLAN
11-14	IL RTE 176 PLAN AND PROFILE
15-17	BRIARWOOD ROAD/OHNSTAD ROAD PLAN AND PROFILE
18-23	ILLINOIS ROUTE 176 CROSS SECTIONS
24-26	BRIARWOOD ROAD/OHNSTAD ROAD CROSS SECTIONS
27	PAVEMENT MARKING PLAN
28	TRAFFIC SIGNAL INSTALLATION PLAN
29	CABLE PLAN AND PHASE DESIGNATION DIAGRAM
30	MAST ARM MOUNTED STREET NAME SIGNS
31	EXISTING AND TEMPORARY GROUND MOUNTED FLASHING BEACONS
32-37	DISTRICT 1 STANDARDS
38	STREET LIGHTING PLAN
39	LIGHTING CONTROLLER BASE MOUNTED, 480 V DETAIL
40	STREET LIGHTING WIRING DETAILS
41-43	STREET LIGHTING DETAILS
44-56	DISTRICT 1 DETAILS

STATE STANDARDS

000001-06	Symbols, Abbreviations, and Patterns
280001-05	Erosion Control Systems, Temporary
406201-01	Mailbox Turnout, State System
442201-03	Patching, Class C and D
482001-02	HMA Shoulder Adjacent to Flexible Pavement
542301-03	End Section, Flared, Precast Reinforced Concrete, Round
542311-02	Grating for Concrete Flared End Sec., for 24 in. (600 mm) thru 54 in. (1300 mm) Pipe Dia.
542401-01	End Section, Metal, for Pipe Culvert
601001-04	Sub-Surface Drains
602001-02	Catch Basin, Type A
602601-02	Flat Slab Top, Precast Reinforced Concrete
604001-03	Type 1 Frame and Lids
630001-09	Steel Plate Beam Guardrail
631011-07	Traffic Barrier Terminal, Type 2
701001-02	Off-Road Operations, 2L 2W, More Than 15 ft. (4.5 m) Away
701006-03	Off-Road Operations, 2L 2W, 15 ft. (4.5 m) to 24 in (600 mm) From Pavement Edge
701011-02	Off-Road Operations, Moving, 2L 2W, Day Only
701201-04	Lane Closure, 2L, 2W, Day Only, for Speeds 45 > MPH
701301-04	Lane Closure, 2L, 2W, Short Time Operations
701306-03	Lane Closure, 2L, 2W, Slow Moving Operations Day Only, for Speeds 45 > MPH
701326-04	Lane Closure, 2L, 2W, Pavement Widening, for Speeds 45 > MPH
701901-01	Traffic Control Devices
720001-01	Sign Panel, Mounting Details
720006-02	Sign Panel, Erection Details
720016-02	Mast Arm Mounted Street Name Signs
780001-02	Pavement Markings
781001-03	Pavement Markers, Raised Reflective, Applications
805001-01	Electrical Service Installation Details
814001-02	Handholes, Polymer Concrete, Single
814006-02	Handholes, Concrete and Polymer Concrete, Double
836001	Light Pole Foundation
857001-01	Phase Sequences
862001-01	Uninterruptible Power Supply (UPS)
873001-02	Traffic Signal Grounding & Bonding
877001-04	Steel Mast Arm Assembly and Pole 16" Through 55"
878001-08	Concrete Foundations, Details
880006-01	Traffic Signal Mounting Details, Post and Bracket Mounted
886001-01	Detector Loop Installations
886006-01	Detection Loops, Typical Layout



FULL SIZE PLANS HAVE BEEN PREPARED USING STANDARD ENGINEERING SCALES. REDUCED SIZED PLANS WILL NOT CONFORM TO STANDARD SCALES. IN MAKING MEASUREMENTS ON REDUCED PLANS, THE ABOVE SCALES MAY BE USED.

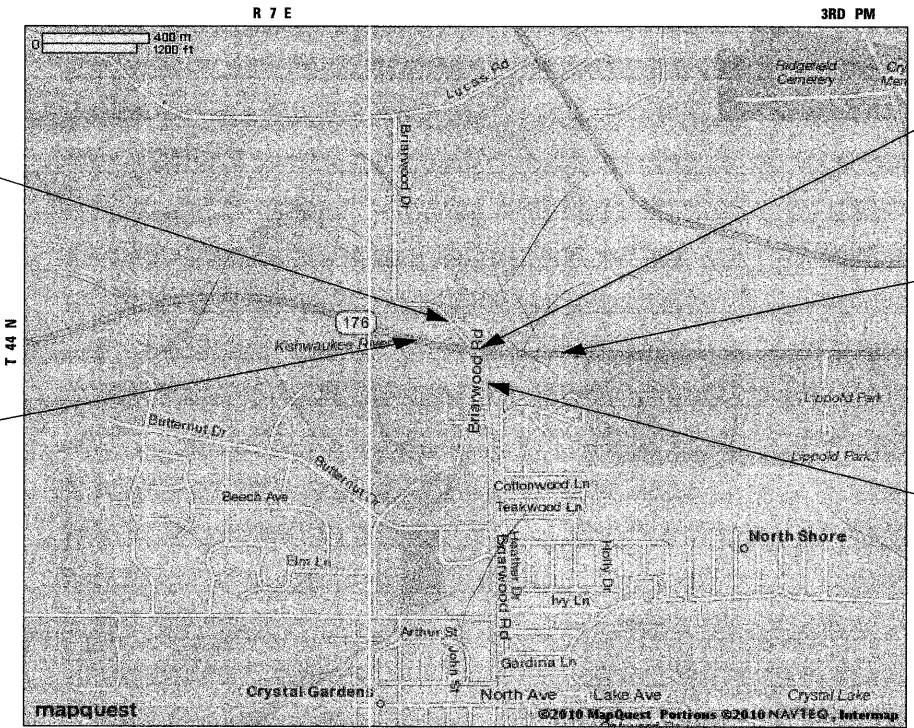
J.U.L.E.
JOINT UTILITY LOCATION INFORMATION FOR EXCAVATION
1-800-892-0123
OR 811

CONTRACT NO. 63551

OHNSTAD ROAD
ADT = 5,500
POSTED SPEED = 35 MPH
DESIGN SPEED = 40 MPH
FUNCTIONAL CLASSIFICATION = COLLECTOR URBAN

BRIARWOOD ROAD
ADT = 5,500
POSTED SPEED = 30 MPH
DESIGN SPEED = 35 MPH
FUNCTIONAL CLASSIFICATION = COLLECTOR URBAN

ILLINOIS ROUTE 176
ADT = 13,700
POSTED SPEED LIMIT = 45 MPH
DESIGN SPEED = 50 MPH
FUNCTIONAL CLASSIFICATION = OTHER PRINCIPAL ARTERIAL



LOCATION MAP
APPROXIMATE SCALE: 1" = 1200'

GROSS AND NET LENGTH OF PROJECT: IL 176
BRIARWOOD/OHNSTAD
TOTAL
1951 ft (0.37 MILE)
1264 ft (0.24 MILE)
3215 ft (0.61 MILE)

PRINTED BY THE AUTHORITY
OF THE STATE OF ILLINOIS

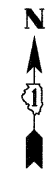
STATION EQUATION
119 + 23.2 IL RTE 176 =
37 + 71.3 BRIARWOOD / OHNSTAD

IL 176
PROJECT ENDS
STA. 129 + 01

BRIARWOOD ROAD
PROJECT BEGINS
STA. 31 + 90

OHNSTAD ROAD
PROJECT ENDS
STA. 44 + 54

IL 176
PROJECT BEGINS
STA. 109 + 50



STATE OF ILLINOIS
DEPARTMENT OF TRANSPORTATION
DIVISION OF HIGHWAYS

APPROVED July 18 20 11
Eric D. Spivack
CITY OF CRYSTAL LAKE

PASSED July 19 20 11
[Signature]
DISTRICT 1 ENGINEER OF LOCAL ROADS

RELEASING FOR BID
BASED ON LIMITED
REVIEW July 21 20 11
Diane M. O'Keefe
DEPUTY DIRECTOR OF HIGHWAYS, REGION 1 ENGINEER

DATE: 7/8/2011
BY: Mark A. Stott
LICENSE EXPIRES: 11/30/2011



HAMPTON, LENZINI AND RENWICK, INC.
CIVIL ENGINEERS - STRUCTURAL ENGINEERS - LAND SURVEYORS
380 SHEPARD DRIVE
ELGIN, ILLINOIS 60123
847.697.6700 www.hlrengineering.com
184.000959
ILLINOIS PROFESSIONAL DESIGN FIRM LS / PE / SE CORPORATION
PROJECT NUMBER: 10.0174.330 DATE: 5/4/2011

PROGRAM AND OFFICE ENGINEER: CHARLES F. RIDDLE, P.E. 847-705-4406