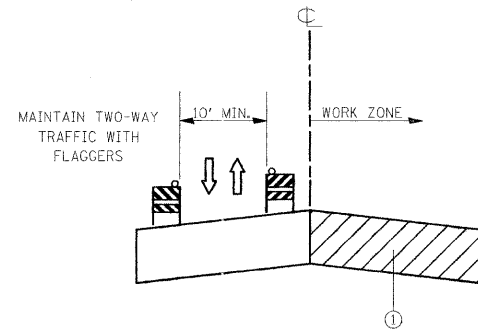


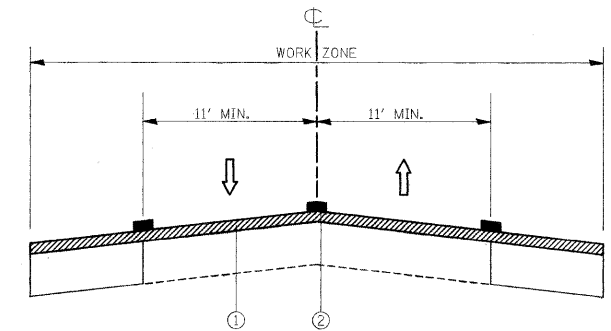
- ① EXISTING PAVEMENT
- ② LEVEL BINDER-STAGE 1
- ③ EXCAVATION, AGGREGATE SUBGRADE, HMA BASE COURSE, OR HMA BASE COURSE WIDENING-STAGE 2
- ④ TYPE 2 BARRICADE OR DRUM

BRIARWOOD / OHNSTAD MAINTENANCE OF TRAFFIC STAGES 1 & 2 TYPICAL SECTION



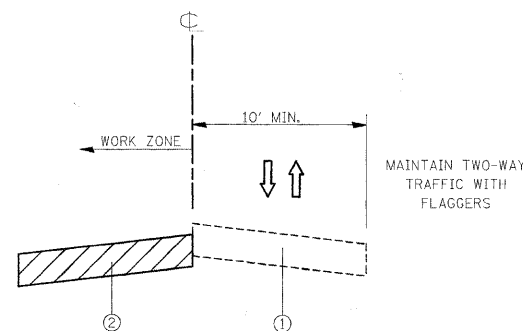
- ① PAVEMENT REMOVAL, EXCAVATION AGGREGATE SUBGRADE AND HMA BASE COURSE
- ② HMA SURFACE REMOVAL

BRIARWOOD / OHNSTAD MAINTENANCE OF TRAFFIC STAGE 3B TYPICAL SECTION



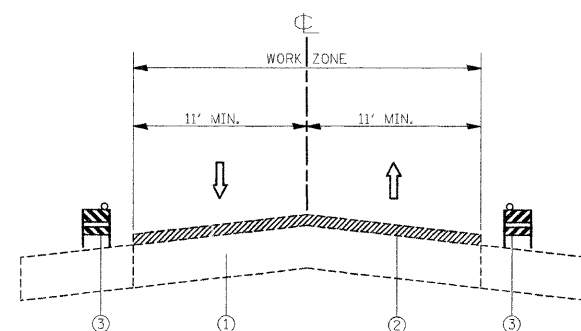
- ① HMA SURFACE COURSE
- ② TEMPORARY PAVEMENT MARKING (TYPICAL)

BRIARWOOD / OHNSTAD MAINTENANCE OF TRAFFIC STAGE 5 TYPICAL SECTION



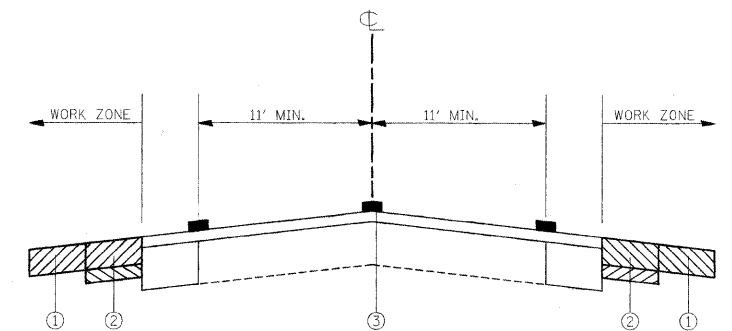
- ① EXISTING PAVEMENT
- ② PAVEMENT REMOVAL, EXCAVATION, AGGREGATE SUBGRADE AND HMA BASE COURSE

BRIARWOOD / OHNSTAD MAINTENANCE OF TRAFFIC STAGE 3A TYPICAL SECTION



- ① EXISTING PAVEMENT
- ② HMA SURFACE REMOVAL
- ③ TYPE 2 BARRICADE OR DRUM

BRIARWOOD / OHNSTAD MAINTENANCE OF TRAFFIC STAGE 4 TYPICAL SECTION



- ① AGGREGATE SHOULDER
- ② HMA SHOULDER
- ③ TEMPORARY PAVEMENT MARKING (TYPICAL)

BRIARWOOD / OHNSTAD MAINTENANCE OF TRAFFIC STAGE 6 TYPICAL SECTION

STAGE 1: PLACE LEVEL BINDER ON EXISTING PAVEMENT FROM STA. 33+00 TO STA. 35+00 AND STA. 40+75 TO STA. 41+75 USING STANDARD 701306 WITH FLAGGERS.

STAGE 2: EXCAVATE AND PLACE AGGREGATE SUBGRADE, HMA BASE COURSE OR BASE COURSE WIDENING FROM STA. 31+90 TO STA. 35+50 AND STA. 39+50 TO 44+54 USING STANDARD 701326 WITH FLAGGERS.

STAGE 3: REMOVE EXISTING PAVEMENT FROM STA. 35+50 TO STA. 37+30 AND STA. 38+20 TO STA. 39+50 AND PLACE AGGREGATE SUBGRADE AND HMA BASE COURSE USING STANDARD 701306 WITH FLAGGERS.

STAGE 4: REMOVE EXISTING HMA SURFACE USING STANDARD 701306 WITH FLAGGERS.

STAGE 5: PLACE FINAL SURFACE OVER EXISTING PAVEMENT, HMA WIDENING AND HMA BASE COURSE USING STANDARD 701306 WITH FLAGGERS.

STAGE 6: EXCAVATE FOR SHOULDERS AND PLACE HMA SHOULDERS AND AGGREGATE SHOULDERS.

FILE NAME =	USER NAME = #USER#	DESIGNED -	REVISED -	STATE OF ILLINOIS DEPARTMENT OF TRANSPORTATION	MAINTENANCE OF TRAFFIC IL ROUTE 176 AND BRIARWOOD RD.			F.A.P. RTE.	SECTION	COUNTY	TOTAL SHEETS	SHEET NO.
P:\2010\100174\oad\phase 2\dwg\100174-shc-staging_typical.dwg		DRAWN -	REVISED -					335	11-00114-00-CH	McHENRY	56	10
PLOT SCALE = #SCALE#		CHECKED -	REVISED -					CONTRACT NO. 63551				
PLOT DATE = 7/1/2011		DATE -	REVISED -					ILLINOIS FED. AID PROJECT				
				SCALE: SHEET NO. OF SHEETS STA. TO STA.								