

PROP. CURVE E.176-1
 PI STA. = 115+83.84
 $\Delta = 20^\circ 31' 03''$ (LT)
 $D = 0^\circ 55' 38''$
 $R = 6,179.11'$
 $T = 1,118.34'$
 $L = 2,212.73'$
 $E = 100.39'$
 P.C. STA = 104+65.50
 P.T. STA = 126+78.22

CONC HW FOR PIPE DRAIN
 123+50, 40' LT
 INV. 908.0

24" FES
 123+93, 39' LT
 INV 906.5

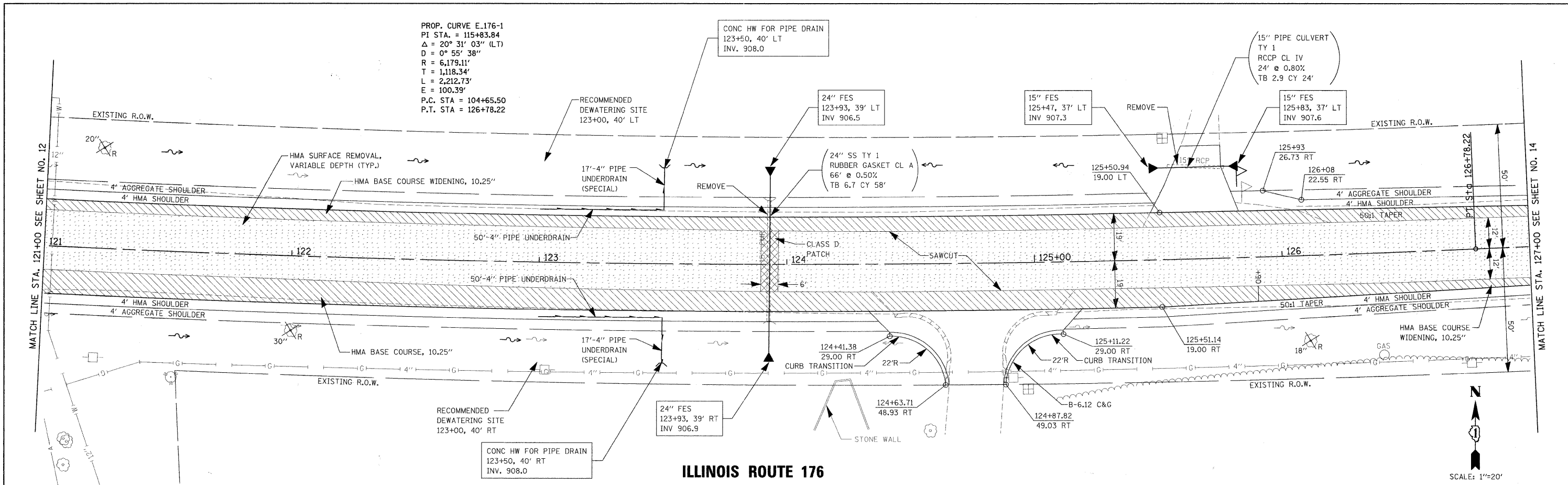
15" FES
 125+47, 37' LT
 INV 907.3

15" PIPE CULVERT
 TY 1
 RCCP CL IV
 24' ϕ 0.80%
 TB 2.9 CY 24'

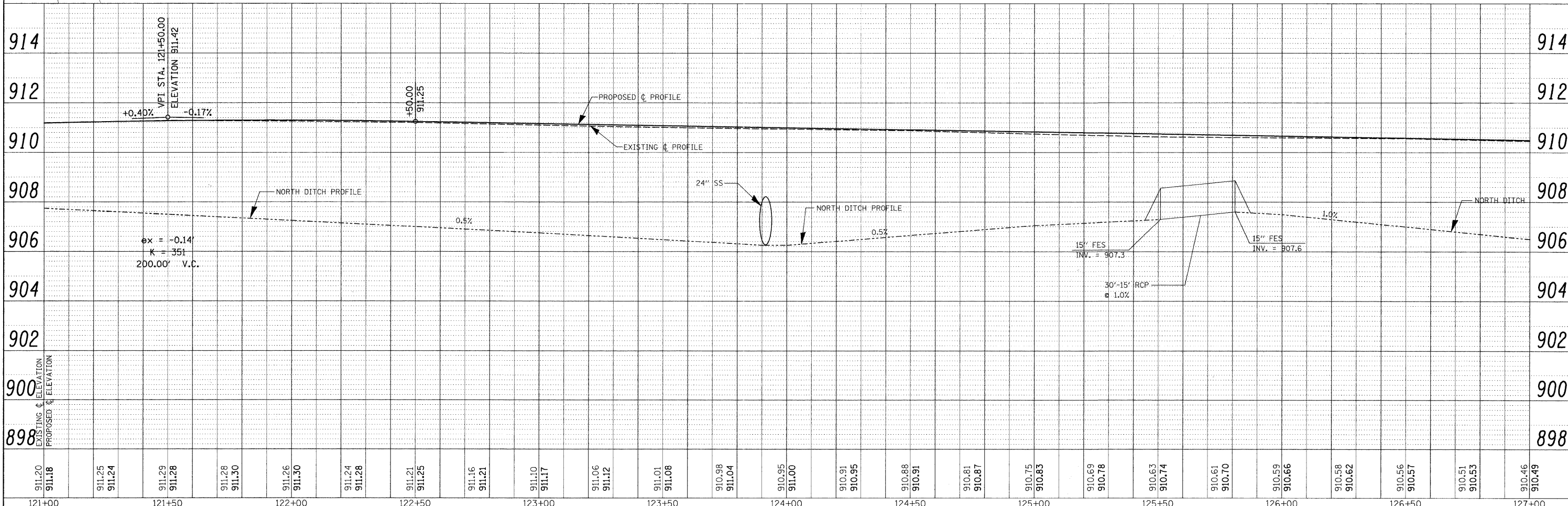
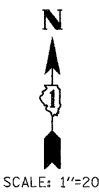
15" FES
 125+83, 37' LT
 INV 907.6

PLAN	REVIEWED	BY	DATE
	PLOTTED		
	ALIGNMENT CHECKED		
	NOTE BOOK		
	NO.		
	ADD FILE NAME		

PROFILE	REVIEWED	BY	DATE
	PLOTTED		
	GRADES CHECKED		
	NOTE BOOK		
	NO.		
	STRUCTURE NOTATIONS CHKD		



ILLINOIS ROUTE 176



FILE NAME =	USER NAME = #USER#	DESIGNED -	REVISED - 02/09/2011	STATE OF ILLINOIS DEPARTMENT OF TRANSPORTATION				IL ROUTE 176 PLAN AND PROFILE IL ROUTE 176 AND BRIARWOOD RD.				F.A.P. RTE. = 335	SECTION = 11-00114-00-CH	COUNTY = McHENRY	TOTAL SHEETS = 56	SHEET NO. = 13
P:\2010\100174\road\phase 2\dwg\100174-shd-plan-e1761.dgn	PLAN = e1761.dgn	DRAWN -	REVISED -					SCALE = #SCALE#	CHECKED -	REVISED -	DATE = 7/16/2011	SCALE:	SHEET NO.	OF	SHEETS	STA.