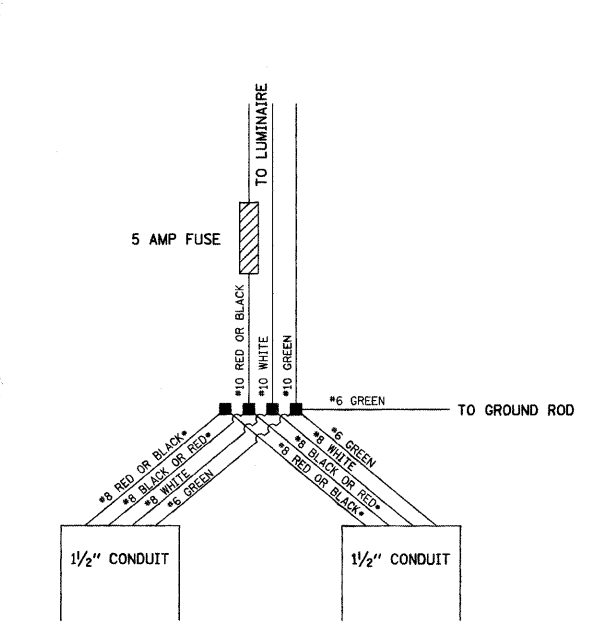


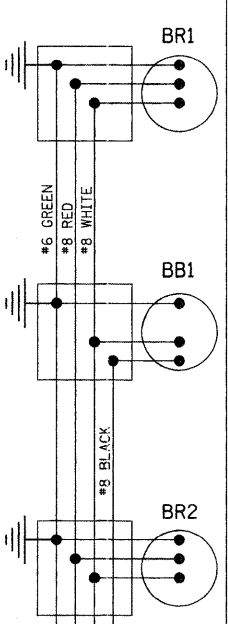
* ONLY ONE CABLE, EITHER BLACK OR RED, IS USED IN EACH POLE. THE OTHER CABLE, RED OR BLACK, PASSES THROUGH THE POLE FOR USE IN THE NEXT POLE.

LIGHT STANDARD WIRING DETAIL
THREE CONDUITS IN BASE

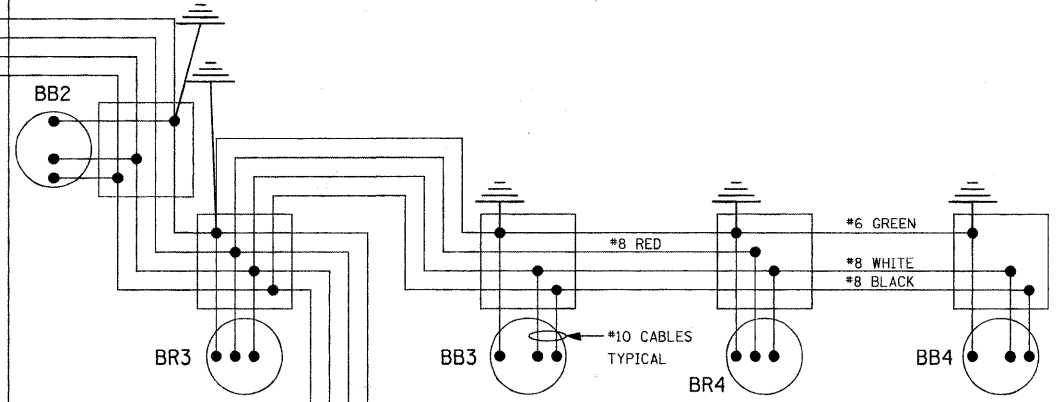


* ONLY ONE CABLE, EITHER BLACK OR RED, IS USED IN EACH POLE. THE OTHER CABLE, RED OR BLACK, PASSES THROUGH THE POLE FOR USE IN THE NEXT POLE.

LIGHT STANDARD WIRING DETAIL
TWO CONDUITS IN BASE



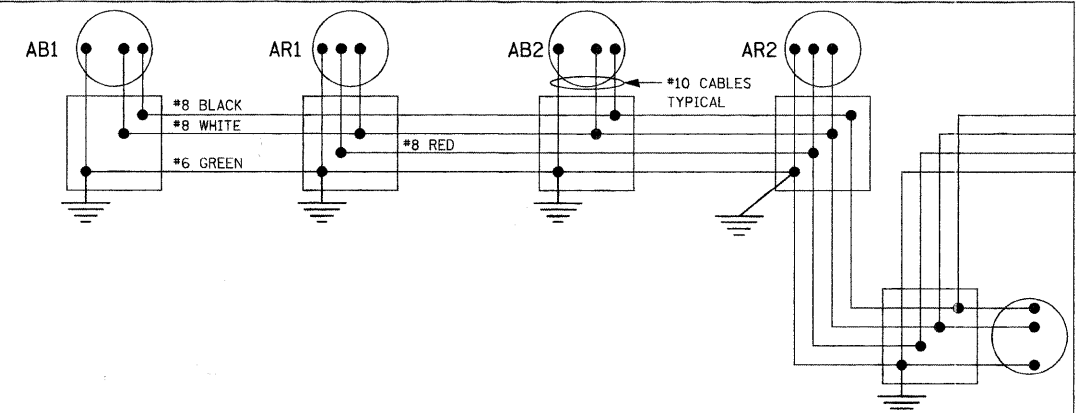
OHNSTAD ROAD



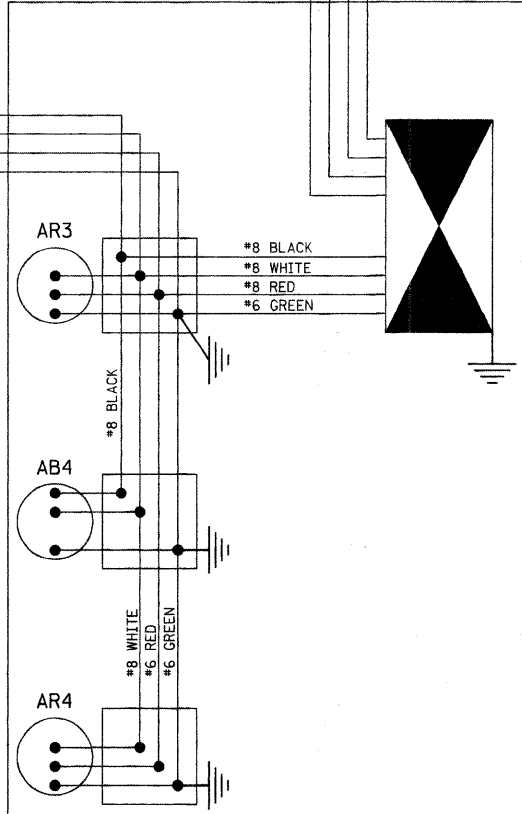
LEGEND

- CONTROLLER INSTALLATION
- LIGHT POLE
- LUMINAIRE
- GROUND ROD
- SPLICE
- CABLE, SIZE AND COLOR AS SPECIFIED

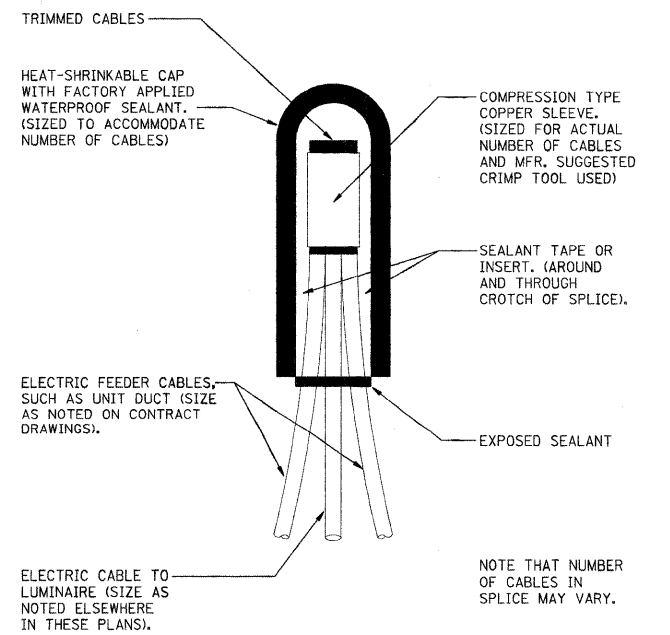
IL ROUTE 176



BRIARWOOD ROAD



SPLICING ELECTRIC CABLES BASIC MATERIALS AND METHODS



LOAD TABLE						
CIRCUIT	RED PHASE		BLACK PHASE		TOTAL	
	AMPS	WATTS	AMPS	WATTS	AMPS	WATTS
A	5	1000	5	1000	10	2000
B	5	1000	5	1000	10	2000