

| | | | | |
|-----------------------|----------------|--------------------|--------------|-----------|
| F.A.U. RTE. | SECTION | COUNTY | TOTAL SHEETS | SHEET NO. |
| 2534 | 02-00068-00-BR | DUPAGE | 15 | 1 |
| FED. ROAD DIST. NO. 1 | ILLINOIS | CONTRACT NO. 63561 | | |

STATE OF ILLINOIS
DEPARTMENT OF TRANSPORTATION
DIVISION OF HIGHWAYS

PLANS FOR PROPOSED
FEDERAL AID HIGHWAY

FAU ROUTE 2534 (JOLIET STREET)
AT WILSON STREET
CULVERT REPLACEMENT
SECTION 02-00068-00-BR
PROJECT BRM-8003(382)
CITY OF WEST CHICAGO
DUPAGE COUNTY
C-91-137-04



INDEX OF SHEETS

- 1 TITLE SHEET
- 2 GENERAL NOTES/SUMMARY OF QUANTITIES
- 3 SCHEDULE OF QUANTITIES
- 4 ALIGNMENT, TIES & BENCHMARKS
- 5 PLAN AND PROFILES
- 6 DETOUR PLAN
- 7 EROSION AND SEDIMENT CONTROL
- 8 RIGHT-OF-WAY PLATS
- 9-13 STRUCTURAL SHEETS
- 14-15 DISTRICT STANDARDS
HIGHWAY STANDARDS

DISTRICT HIGHWAY STANDARDS

- BD-22 PAVEMENT PATCHING FOR HMA SURFACED PAVEMENT
- TC-13 DISTRICT ONE TYPICAL PAVEMENT MARKINGS

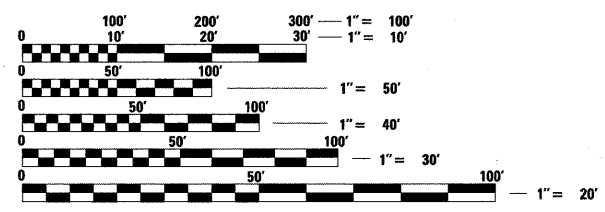
STATEWIDE HIGHWAY STANDARDS

- 000001-06 STANDARD SYMBOLS, ABBREVIATIONS AND PATTERNS
- 280001-05 TEMPORARY EROSION CONTROL SYSTEM
- 424001-05 CURB RAMPS FOR SIDEWALKS
- 442201-03 CLASS C AND D PATCHING
- 515001-03 NAME PLATES FOR BRIDGES
- 630001-09 STEEL PLATE BEAM GUARDRAIL
- 630101-09 GUARDRAIL MOUNTED ON EXISTING CULVERTS
- 701006-03 OFF-RD OPERATIONS, 2L, 2W, 15' TO 24" FROM PAVEMENT EDGE
- 701301-04 LANE CLOSURE, 2L, 2W, SHORT TIME OPERATIONS
- 701901-01 TRAFFIC CONTROL DEVICES
- 704001-06 TEMPORARY CONCRETE BARRIER
- BLR 17-4 TRAFFIC CONTROL DEVICES - DAY LABOR CONSTRUCTION
- BLR 22-6 TYPICAL APPLICATION OF TRAFFIC CONTROL DEVICES FOR CONSTRUCTION ON RURAL LOCAL HIGHWAY

SEE SHEET 2 FOR ADDITIONAL HIGHWAY STANDARDS

TRAFFIC DATA

- DESIGN DESIGNATION = COLLECTOR (JOLIET STREET)
- TRAFFIC VOLUME = 11,700 VPD (2010) (JOLIET STREET)
- POSTED SPEED LIMIT = 40 MPH (JOLIET STREET)



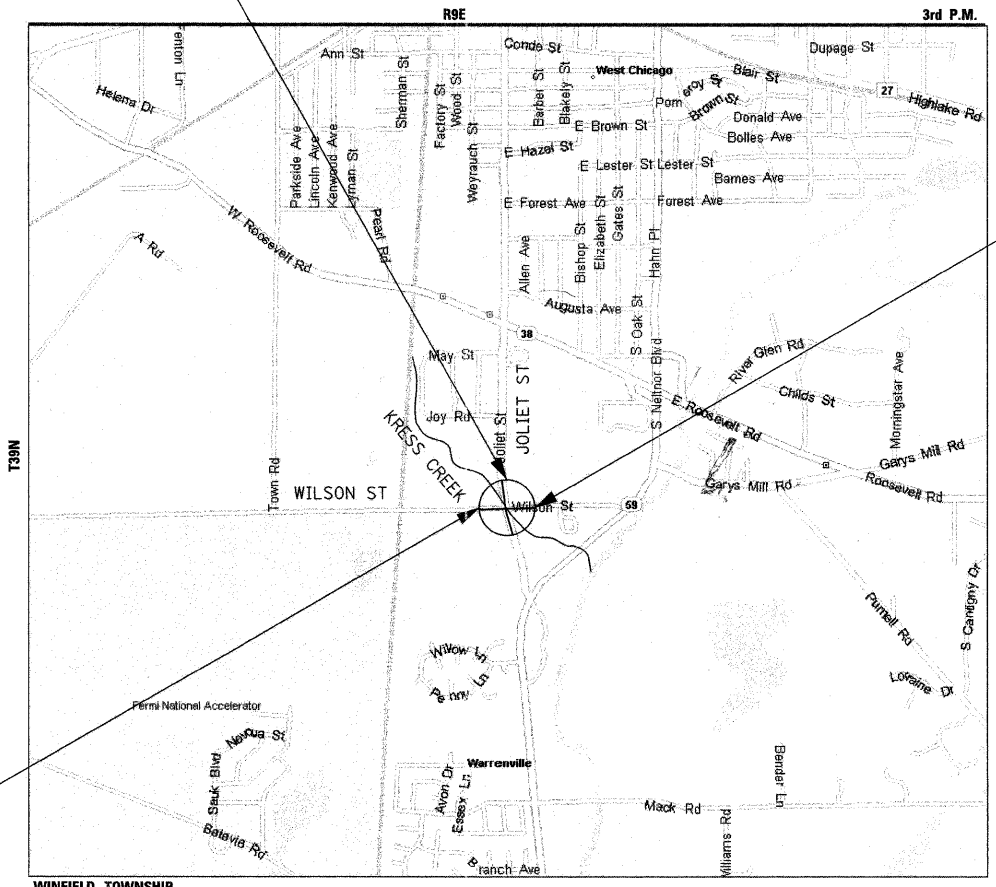
FULL SIZE PLANS HAVE BEEN PREPARED USING STANDARD ENGINEERING SCALES. REDUCED SIZED PLANS WILL NOT CONFORM TO STANDARD SCALES. IN MAKING MEASUREMENTS ON REDUCED PLANS, THE ABOVE SCALES MAY BE USED.

J.U.L.I.E.
JOINT UTILITY LOCATION INFORMATION FOR EXCAVATION
 1-800-892-0123
 OR 811

PROJECT INCLUDES REMOVAL AND REPLACEMENT OF EXISTING STRUCTURE, S.N. 022-3099 WITH A NEW STRUCTURE, S.N. 022-6006

PROJECT ENDS STA. 20+82.83

PROJECT BEGINS STA. 19+39.81



REGISTERED PROFESSIONAL ENGINEER
 ANTHONY J. STANDISH
 No. 062-056084
 STATE OF ILLINOIS
 exp. 11/2011

STRAND ASSOCIATES, INC.
 ENGINEERS
 1170 SOUTH HOUBOLT ROAD
 JOLIET, ILLINOIS 60431
 (815) 744-4200

STATE OF ILLINOIS
 DEPARTMENT OF TRANSPORTATION
 DIVISION OF HIGHWAYS

APPROVED FEBRUARY 10 2011
[Signature]
 CITY OF WEST CHICAGO, ASST. CITY ENGINEER

PASSED FEBRUARY 17 2011
[Signature]
 DISTRICT ENGINEER OF LOCAL ROADS AND STREETS

RELEASING FOR BID
 BASED ON LIMITED REVIEW
 REVIEW FEBRUARY 24, 2011
[Signature]
 DEPUTY DIRECTOR OF HIGHWAY, REGION ENGINEER

**PRINTED BY THE AUTHORITY
 OF THE STATE OF ILLINOIS**

GROSS LENGTH = 143 FT = 0.027 MILES
 NET LENGTH = 143 FT = 0.027 MILES
 LOCATION MAP
 1" = 0.60 MILES

PROGRAM AND OFFICE ENGINEER: CHARLES F. RIDDLE, P.E. 847-705-4406 SCHAUMBURG, IL

CONTRACT NO. 63561