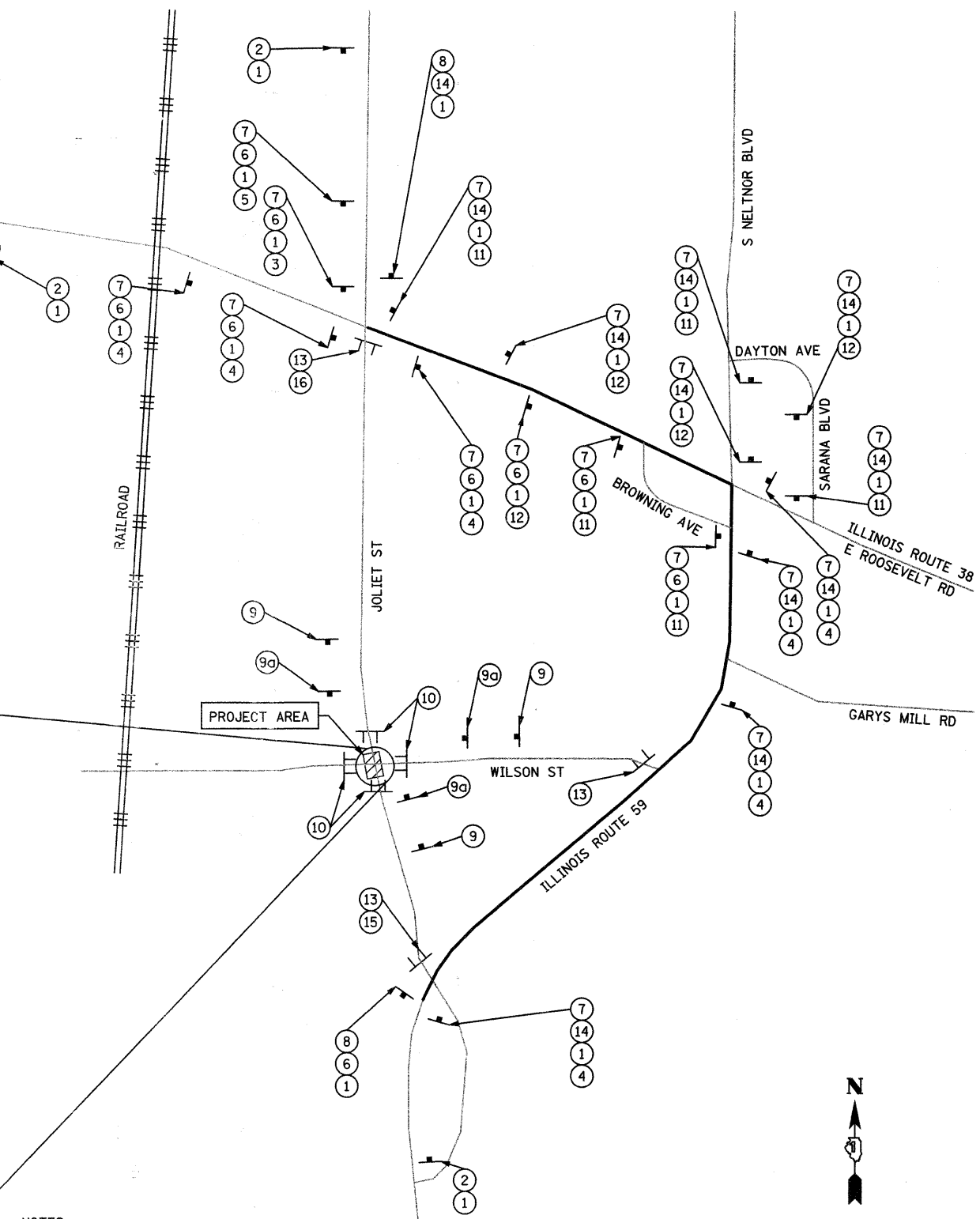
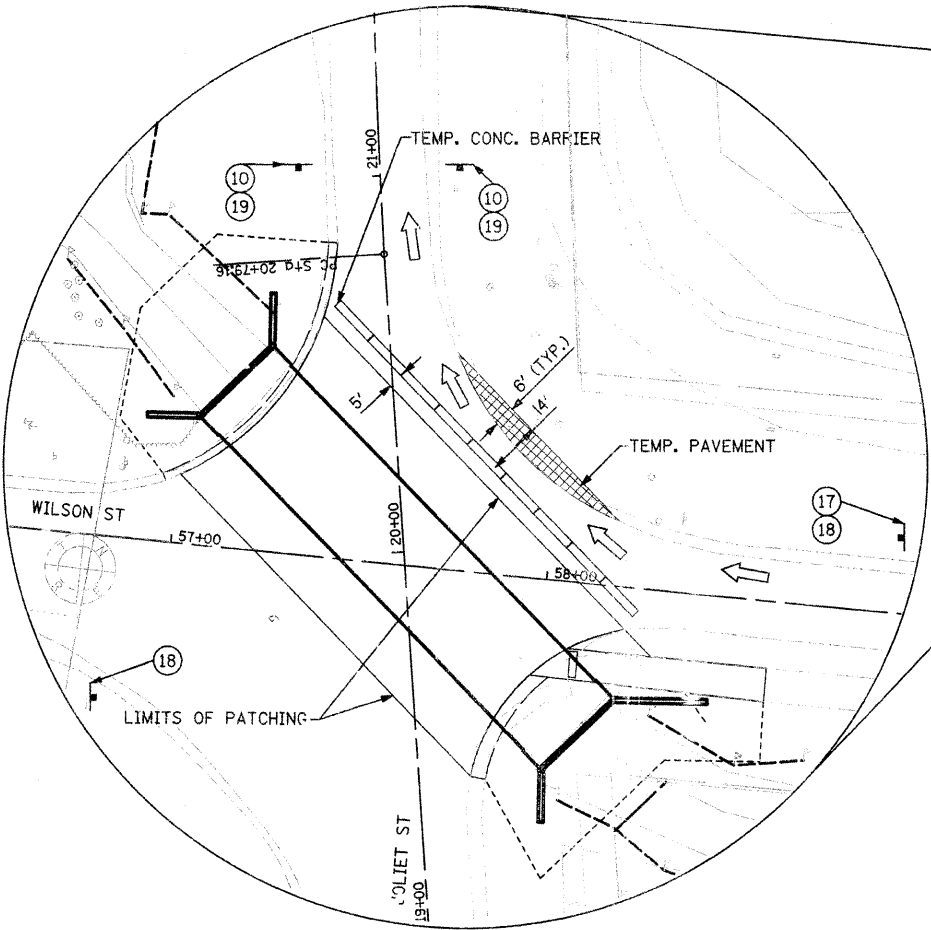
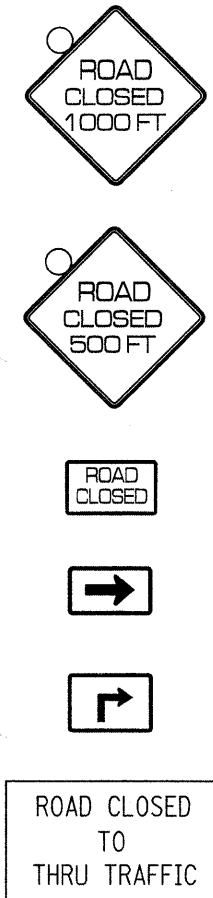


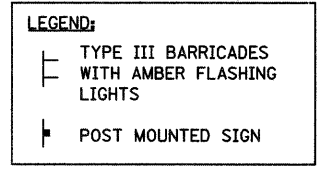
**SIGN LEGEND:**

- ① W17-1101 24x30
- ② W20-2 48x48 W/AMBERLIGHT
- ③ M6-1L 21x15
- ④ M6-3 21x15
- ⑤ M5-1L 21x15
- ⑥ M3-3 24x12
- ⑦ W4-8 24x12
- ⑧ M4-89 24x12
- ⑨ W20-3 48x48 W/AMBER LIGHT
- 9a W20-2 48x48 W/AMBER LIGHT
- ⑩ R11-2 48x30
- ⑪ M6-1R 21x15
- ⑫ M5-1R 21x15
- ⑬ R11-4 60x30

- ⑭ M3-1 24x12
- ⑮ M4-10R 48x18
- ⑯ M4-10L 48x18
- ⑰ W20-4 48x48
- ⑱ R3-R5 36x30
- R5-1 36x36



- NOTES:**
- EXISTING SIGNS WHICH CONFLICT WITH THE MARKED DETOUR SHALL BE COVERED. COST OF COVERING EXISTING SIGNS SHALL BE INCLUDED IN THE COST FOR TRAFFIC CONTROL AND PROTECTION FOR TEMPORARY DETOUR.
  - ALL SIGNS SHALL BE ORANGE WITH BLACK LETTERS, EXCEPT SIGN NUMBER 19.
  - SIGN PLACEMENT AND SPACING WILL BE AS DIRECTED BY THE RESIDENT ENGINEER.
  - CONTRACTOR SHALL COORDINATE ITS CONSTRUCTION OPERATIONS WITH THOSE OF OTHER CONTRACTORS AND ENTITIES TO ENSURE EFFICIENT AND ORDERLY INSTALLATION OF EACH PART OF THE WORK.
  - ACCESS WILL BE PROVIDE FOR LOCAL TRAFFIC TO MAKE THE MOVEMENT FROM WESTBOUND WILSON STREET TO NORTHBOUND JOLIET STREET.



FILE NAME = S:\JOLIET\2008-02\99\B253\016\Micro\Sheets\01-shit-intersec.dgn



1170 SOUTH HOBOLT ROAD  
JOLIET, ILLINOIS 60431  
(815) 744-4200

USER NAME = brianf	DESIGNED - -	REVISED -
PLOT SCALE = 10,0000 1/ IN.	DRAWN - -	REVISED -
PLOT DATE = 2/8/2011	CHECKED - -	REVISED -
	DATE - -	REVISED -

**STATE OF ILLINOIS  
DEPARTMENT OF TRANSPORTATION**

**TEMPORARY DETOUR PLAN**

SCALE: AS SHOWN SHEET NO. OF SHEETS STA. TO STA.

F.A.U. RTE. 2534	SECTION 02-00068-00-BR	COUNTY DUPAGE	TOTAL SHEETS 14	SHEET NO. 6
CONTRACT NO. 63561				

FED. ROAD DIST. NO. 1 ILLINOIS FED. AID PROJECT