

F.A.U. RTE.	SECTION	COUNTY	TOTAL SHEETS	SHEET NO.
2534	02-00068-00-BR	DUPAGE	15	1
FED. ROAD DIST. NO. 1	ILLINOIS	CONTRACT NO. 63561		

**STATE OF ILLINOIS
DEPARTMENT OF TRANSPORTATION
DIVISION OF HIGHWAYS**

**PLANS FOR PROPOSED
FEDERAL AID HIGHWAY**

**FAU ROUTE 2534 (JOLIET STREET)
AT WILSON STREET
CULVERT REPLACEMENT
SECTION 02-00068-00-BR
PROJECT BRM-8003(382)
CITY OF WEST CHICAGO
DUPAGE COUNTY
C-91-137-04**



INDEX OF SHEETS

1	TITLE SHEET
2	GENERAL NOTES/SUMMARY OF QUANTITIES
3	SCHEDULE OF QUANTITIES
4	ALIGNMENT, TIES & BENCHMARKS
5	PLAN AND PROFILES
6	DETOUR PLAN
7	EROSION AND SEDIMENT CONTROL
8	RIGHT-OF-WAY PLATS
9-13	STRUCTURAL SHEETS
14-15	DISTRICT STANDARDS HIGHWAY STANDARDS

DISTRICT HIGHWAY STANDARDS

BD-22	PAVEMENT PATCHING FOR HMA SURFACED PAVEMENT
TC-13	DISTRICT ONE TYPICAL PAVEMENT MARKINGS

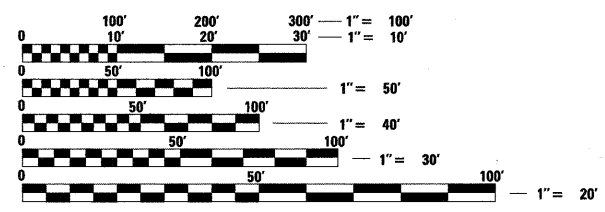
STATEWIDE HIGHWAY STANDARDS

000001-06	STANDARD SYMBOLS, ABBREVIATIONS AND PATTERNS
280001-05	TEMPORARY EROSION CONTROL SYSTEM
424001-05	CURB RAMPS FOR SIDEWALKS
442201-03	CLASS C AND D PATCHING
515001-03	NAME PLATES FOR BRIDGES
630001-09	STEEL PLATE BEAM GUARDRAIL
630101-09	GUARDRAIL MOUNTED ON EXISTING CULVERTS
701006-03	OFF-RD OPERATIONS, 2L, 2W, 15' TO 24" FROM PAVEMENT EDGE
701301-04	LANE CLOSURE, 2L, 2W, SHORT TIME OPERATIONS
701901-01	TRAFFIC CONTROL DEVICES
704001-06	TEMPORARY CONCRETE BARRIER
BLR 17-4	TRAFFIC CONTROL DEVICES - DAY LABOR CONSTRUCTION
BLR 22-6	TYPICAL APPLICATION OF TRAFFIC CONTROL DEVICES FOR CONSTRUCTION ON RURAL LOCAL HIGHWAY

SEE SHEET 2 FOR ADDITIONAL HIGHWAY STANDARDS

TRAFFIC DATA

DESIGN DESIGNATION	= COLLECTOR (JOLIET STREET)
TRAFFIC VOLUME	= 11,700 VPD (2010) (JOLIET STREET)
POSTED SPEED LIMIT	= 40 MPH (JOLIET STREET)



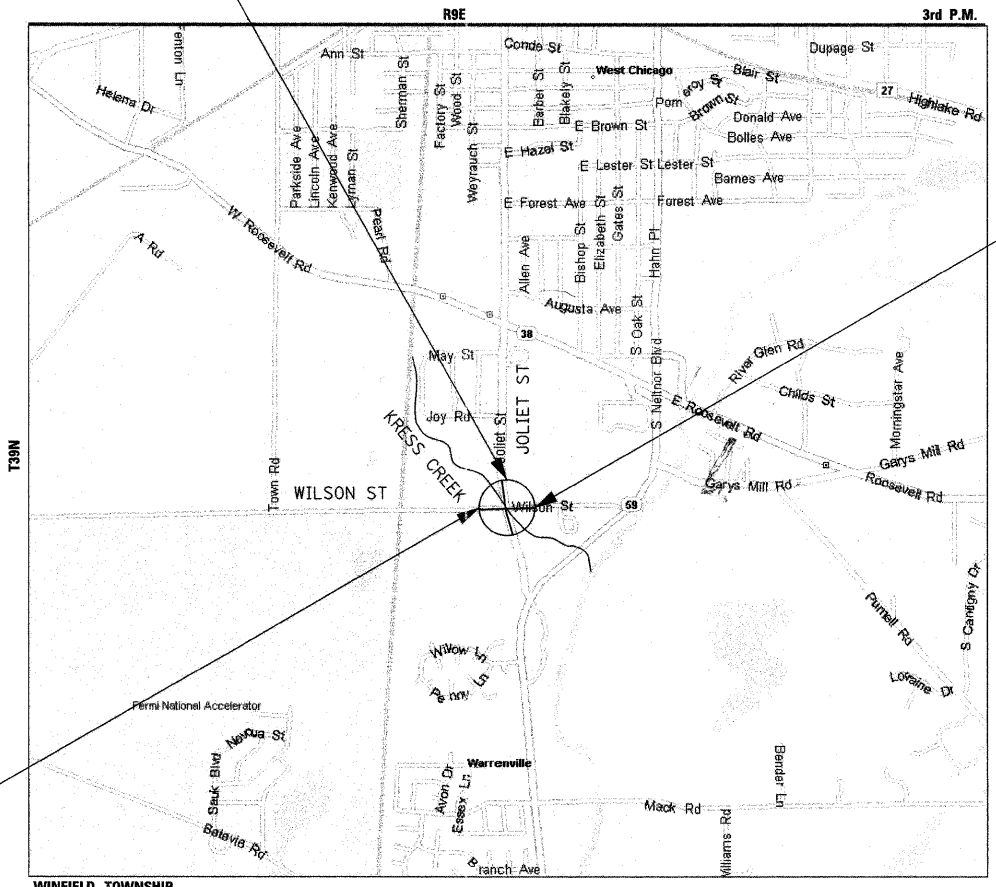
FULL SIZE PLANS HAVE BEEN PREPARED USING STANDARD ENGINEERING SCALES. REDUCED SIZED PLANS WILL NOT CONFORM TO STANDARD SCALES. IN MAKING MEASUREMENTS ON REDUCED PLANS, THE ABOVE SCALES MAY BE USED.

**J.U.L.I.E.
JOINT UTILITY LOCATION INFORMATION FOR EXCAVATION
1-800-892-0123
OR 811**

PROJECT INCLUDES REMOVAL AND REPLACEMENT OF EXISTING STRUCTURE, S.N. 022-3099 WITH A NEW STRUCTURE, S.N. 022-6006

PROJECT ENDS STA. 20+82.83

PROJECT BEGINS STA. 19+39.81



GROSS LENGTH = 143 FT = 0.027 MILES
NET LENGTH = 143 FT = 0.027 MILES
LOCATION MAP
1" = 0.60 MILES

REGISTERED PROFESSIONAL ENGINEER
ANTHONY J. STANDISH
No. 062-056084
STATE OF ILLINOIS
Anthony J. Standish
exp. 11/2011

STRAND ASSOCIATES, INC. ENGINEERS
1170 SOUTH HOUBOLT ROAD
JOLIET, ILLINOIS 60431
(815) 744-4200

**STATE OF ILLINOIS
DEPARTMENT OF TRANSPORTATION
DIVISION OF HIGHWAYS**

APPROVED FEBRUARY 10 2011
[Signature]
CITY OF WEST CHICAGO, ASST. CITY ENGINEER

PASSED FEBRUARY 17 2011
[Signature]
DISTRICT ENGINEER OF LOCAL ROADS AND STREETS

RELEASING FOR BID
BASED ON LIMITED
REVIEW FEBRUARY 24, 2011
[Signature]
DEPUTY DIRECTOR OF HIGHWAY, REGION ENGINEER

**PRINTED BY THE AUTHORITY
OF THE STATE OF ILLINOIS**

PROGRAM AND OFFICE ENGINEER: CHARLES F. RIDDLE, P.E. 847-705-4406 SCHAUMBURG, IL

CONTRACT NO. 63561

SUMMARY OF QUANTITIES

NUMBER	ITEM	UNIT	TOTAL	0004	0011
20101400	NITROGEN FERTILIZER NUTRIENT	POUND	45	45	
20101500	PHOSPHORUS FERTILIZER NUTRIENT	POUND	45	45	
20101600	POTASSIUM FERTILIZER NUTRIENT	POUND	45	45	
20700220	POROUS GRANULAR EMBANKMENT	CU YD	81		81
21101505	TOPSOIL EXCAVATION AND PLACEMENT	CU YD	39	39	
25000110	SEEDING, CLASS 1A	ACRE	0.25	0.25	
25000312	SEEDING, CLASS 4A	ACRE	0.25	0.25	
25100115	MULCH, METHOD 2	ACRE	0.25	0.25	
25100630	EROSION CONTROL BLANKET	SQ YD	83	83	
28000400	PERIMETER EROSION BARRIER	FOOT	155	155	
28100107	STONE RIPRAP, CLASS A4	SQ YD	136		136
28200200	FILTER FABRIC	SQ YD	136		136
31101400	SUBBASE GRANULAR MATERIAL, TYPE B 6"	SQ YD	720	720	
35101500	AGGREGATE BASE COURSE, TYPE B	CU YD	61	61	
40600100	BITUMINOUS MATERIALS (PRIME COAT)	GALLON	504	504	
40601005	HOT-MIX ASPHALT REPLACEMENT OVER PATCHES	TON	61	61	
42400200	PORTLAND CEMENT CONCRETE SIDEWALK 5 INCH	SQ FT	549	549	
42400800	DETECTABLE WARNINGS	SQ FT	8	8	
44000100	PAVEMENT REMOVAL	SQ YD	29	29	
44000600	SIDEWALK REMOVAL	SQ FT	549	549	
44002206	HOT-MIX ASPHALT REMOVAL OVER PATCHES, 1 1/2"	SQ YD	720	720	
44201833	CLASS D PATCHES, TYPE IV, 15 INCH	SQ YD	720	720	
48101202	AGGREGATE SHOULDERS, TYPE B	CU YD	5	5	
50100100	REMOVAL OF EXISTING STRUCTURES	EACH	1		1
50200450	REMOVAL AND DISPOSAL OF UNSUITABLE MATERIAL FOR STRUCTURES	CU YD	7		7
50300225	CONCRETE STRUCTURES	CU YD	16		16
50800205	REINFORCEMENT BARS, EPOXY COATED	POUND	96290		96290
51500100	NAME PLATES	EACH	1		1
54003000	CONCRETE BOX CULVERTS	CU YD	417		417
58100200	WATERPROOFING MEMBRANE SYSTEM	SQ YD	401		401
++ 63000025	STEEL PLATE BEAM GUARDRAIL, ATTACHED TO STRUCTURES	FOOT	50	50	
67000400	ENGINEER'S FIELD OFFICE, TYPE A	CAL MO	3	3	
67100100	MOBILIZATION	L SUM	1	1	
70300220	TEMPORARY PAVEMENT MARKING - LINE 4"	FOOT	120	120	
70400100	TEMPORARY CONCRETE BARRIER	FOOT	115	115	
72000100	SIGN PANEL - TYPE 1	SQ FT	12	12	
72900100	METAL POST - TYPE A	FOOT	46	46	
++ 78000200	THERMOPLASTIC PAVEMENT MARKING - LINE 4"	FOOT	260	260	
++ 78200410	GUARDRAIL MARKERS, TYPE A	EACH	2	2	
++ 78200530	BARRIER WALL MARKERS, TYPE C	EACH	10	10	

++ SPECIALITY ITEMS
 * SPECIAL PROVISIONS

NUMBER	ITEM	UNIT	TOTAL	0004	0011
* X7010216	TRAFFIC CONTROL AND PROTECTION, (SPECIAL)	L SUM	1	1	
* XX008438	TRAFFIC CONTROL AND PROTECTION FOR TEMPORARY DETOUR	EACH	1	1	
Z0013798	CONSTRUCTION LAYOUT	L SUM	1	1	
* Z0062456	TEMPORARY PAVEMENT	SQ YD	29	29	

GENERAL NOTES

- WHERE SECTION OR SUB-SECTIONS MONUMENTS ARE ENCOUNTERED, THE ENGINEER SHALL BE NOTIFIED BEFORE SUCH MONUMENTS ARE REMOVED. THE CONTRACTOR SHALL PROTECT AND CAREFULLY PRESERVE ALL PROPERTY MARKERS AND MONUMENTS UNTIL THE OWNER, AN AUTHORIZED AGENT, OR LAND SURVEYOR HAS WITNESSED OR OTHERWISE REFERENCED THEIR LOCATION. THE CONTRACTOR WILL BE RESPONSIBLE FOR HAVING AN AUTHORIZED SURVEYOR RE-ESTABLISH ANY SECTION OR SUB-SECTION MONUMENTS DESTROYED BY CONTRACTOR OPERATIONS. AN EXISTING MONUMENT IS LOCATED ALONG WILSON STREET NEAR STA. 56+80.
- THE LOCATION AND ELEVATION OF THE VARIOUS UNDERGROUND UTILITIES AS SHOWN ON THE PLANS ARE APPROXIMATE. THE CONTRACTOR SHALL USE SPECIAL CARE WHEN CONDUCTING CONSTRUCTION OPERATIONS NEAR UTILITIES TO PREVENT DAMAGE.
- 48 HOURS PRIOR TO THE START OF ANY EXCAVATION, THE CONTRACTOR SHALL CALL "JULIE" AT 800-892-0123 OR FOR FIELD LOCATIONS OF BURIED UTILITIES.
- ALL EXCESS MATERIAL AND ANY OTHER DEBRIS SHALL BE DISPOSED OF BY THE CONTRACTOR AT AN OFF-SITE DISPOSAL AREA.
- THE CONTRACTOR SHALL PROTECT ALL EXISTING TREES, SHRUBS, FENCES, DRAIN LINES, POWER LINES AND OTHER PUBLIC/PRIVATE PROPERTY. ANY ITEM THAT IS DAMAGED SHALL BE REPLACED OR REPAIRED BY THE CONTRACTOR AS DIRECTED BY THE ENGINEER IN ACCORDANCE WITH ARTICLE 107.20.
- THE CONTRACTOR SHALL KEEP EXISTING ADJACENT ROADWAYS, PARKING LOTS AND SIDEWALKS CLEAN OF DIRT, MUD AND OTHER DEBRIS AND WHEN NECESSARY, CLEAN SAID PAVEMENTS ON A DAILY BASIS OR WHEN DIRECTED BY THE ENGINEER.
- FOR DESIGN AND QUANTITY ESTIMATION PURPOSES, THESE PLANS HAVE BEEN DEVELOPED USING 112.0 POUNDS PER SQUARE YARD PER INCH THICKNESS OF HOT-MIX ASPHALT SURFACE PAVEMENTS, 90 LB/ACRE FOR FERTILIZERS.
- THE CONTRACTOR SHALL MAINTAIN THE SITE IN A CLEAN AND ORDERLY MANNER. DEBRIS AND ANY SURPLUS MATERIALS SHALL BE REMOVED AND RESTORATION SHALL PROCEED AS THE WORK PROCEEDS. IF THE OWNER OR THE ENGINEER SO DIRECTS THE CONTRACTOR SHALL STOP ALL OTHER WORK AND CONCENTRATE ON CLEAN-UP AND RESTORATION. DEBRIS AND SURPLUS MATERIALS SHALL BE DISPOSED OF BY THE CONTRACTOR OFF-SITE.
- THE CONTRACTOR SHALL CONFINE OPERATIONS WITHIN CONSTRUCTION LIMITS AS SHOWN ON PLANS. ANY DAMAGE OUTSIDE OF SAID CONSTRUCTION LIMITS SHALL BE REPAIRED AT THE CONTRACTOR'S EXPENSE.
- PLAN DIMENSIONS AND DETAILS RELATIVE TO EXISTING PLANS ARE SUBJECT TO NOMINAL CONSTRUCTION VARIATIONS. THE CONTRACTOR SHALL FIELD VERIFY EXISTING DIMENSIONS AND DETAILS AFFECTING NEW CONSTRUCTION AND MAKE NECESSARY APPROVED ADJUSTMENTS PRIOR TO CONSTRUCTION OR ORDERING OF MATERIALS. SUCH VARIATIONS SHALL NOT BE CAUSE FOR ADDITIONAL COMPENSATION FOR A CHANGE IN SCOPE OF THE WORK, HOWEVER, THE CONTRACTOR WILL BE PAID FOR THE QUANTITY ACTUALLY FURNISHED AT THE UNIT PRICE BID FOR THE WORK.
- THE CONTRACTOR SHALL NOTIFY THE ENGINEER AT LEAST 72 HOURS IN ADVANCE OF BEGINNING WORK AND SHALL COORDINATE ALL CONSTRUCTION OPERATIONS WITH THE ENGINEER. ALL CONSTRUCTION ACTIVITIES SHALL BE COORDINATED WITH THE ENGINEER. THE STORAGE OF EQUIPMENT AND/OR MATERIALS WITHIN THE RIGHT-OF-WAY OF ANY PROPERTY SHALL REQUIRE APPROVAL OF THE ENGINEER.
- ACCESS MUST BE MAINTAINED TO THE PROPERTY ON THE WEST LEG OF WILSON STREET DURING CONSTRUCTION UNLESS ARRANGEMENTS ARE MADE IN WRITING BY THE CONTRACTOR WITH THE PROPERTY OWNERS WITH A COPY TO THE ENGINEER FOR SHORT-TERM CLOSURES.
- DETOUR SIGN LOCATIONS MAY VARY FROM THE LOCATIONS SHOWN ON THE PLANS IN ACCORDANCE WITH DIRECTIONS FROM THE ENGINEER AT THE TIME OF CONSTRUCTION. SIGN LOCATIONS MAY BE ADJUSTED IN THE FIELD TO AVOID ANY FOUND UTILITIES.
- TEMPORARY PAVEMENT SHALL CONSIST OF 6" HMA ON 4" OF AN AGGREGATE BASE.

ADDITIONAL HIGHWAY STANDARDS

- 635006-03 REFLECTOR AND TERMINAL MARKER PLACEMENT
- 635011-02 REFLECTOR MARKER AND MOUNTING DETAILS
- 720001-01 SIGN PANEL MOUNTING DETAILS
- 720006-02 SIGN PANEL ERECTION DETAILS
- 729001-01 APPLICATIONS OF TYPES A&B METAL POSTS (FOR SIGNS & MARKERS)

FILE NAME = S:\JULI 6208--6291\6253\016\MicroStation\Sheets\01-ht-gmnoa.dgn



1170 SOUTH HOUBOLT ROAD JOLIET, ILLINOIS 60431 (815) 744-4200	USER NAME = brisanf	DESIGNED -	REVISED -
	PLOT SCALE = 50.0000' / IN.	DRAWN -	REVISED -
	PLOT DATE = 2/23/2011	CHECKED -	REVISED -
		DATE -	REVISED -

STATE OF ILLINOIS
 DEPARTMENT OF TRANSPORTATION

GENERAL NOTES AND SUMMARY OF QUANTITIES

SCALE: AS SHOWN | SHEET NO. OF SHEETS | STA. TO STA.

F.A.U. RTE. 2534	SECTION 02-00068-00-BR	COUNTY DUPAGE	TOTAL SHEETS 15	SHEET NO. 2
CONTRACT NO. 63561			FED. ROAD DIST. NO. 1 ILLINOIS FED. AID PROJECT	

PAVEMENT/SHOULDERS												
LOCATION			31100500	35101500	40600100	40601005	42400200	42400800	44000600	44002200	44201833	48101202
			SUBBASE GRANULAR MATERIAL, TYPE B, 6"	AGGREGATE BASE COURSE, TYPE B	BITUMINOUS MATERIALS (PRIME COAT)	HOT-MIX ASPHALT REPLACEMENT OVER PATCHES	PORTLAND CEMENT CONCRETE SIDEWALK, 5 INCH	DETECTABLE WARNINGS	SIDEWALK REMOVAL	HOT-MIX ASPHALT REMOVAL OVER PATCHES, 1 1/2"	CLASS D PATCHES, TYPE IV, 15 INCH	AGGREGATE SHOULDERS, TYPE B
			SQ YD	CU YD	GALLON	TON	SQ FT	SQ FT	SQ FT	SQ YD	SQ YD	CU YD
STA. 19+55 TO STA. 20+44	JOLIET	RT/LT	720		504	61				720	720	
STA. 58+02 TO STA. 58+11	WILSON	RT		61			549		549			
STA. 58+08 TO STA. 58+10	WILSON	RT						8				
STA. 58+11 TO STA. 58+39	WILSON	RT										
STA. 20+25 TO STA. 20+66	JOLIET	LT										2
STA. 19+35 TO STA. 19+60	JOLIET	RT										3
TOTAL			720	61	504	61	549	8	549	720	720	5

GUARDRAIL			
LOCATION			63000025
			STEEL PLATE BEAM GUARDRAIL, ATTACHED TO STRUCTURES
			FOOT
STA. 19+40 TO STA. 19+58	JOLIET	RT	25
STA. 20+39 TO STA. 20+57	JOLIET	LT	25
TOTAL			50

LANDSCAPING/EROSION CONTROL											
LOCATION			20101400	20101500	20101600	21101505	25000110	25000312	25100115	25100630	28000400
			NITROGEN FERTILIZER NUTRIENT	PHOSPHORUS FERTILIZER NUTRIENT	POTASSIUM FERTILIZER NUTRIENT	TOPSOIL EXCAVATION AND PLACEMENT	SEEDING, CLASS 1A	SEEDING, CLASS 4A	MULCH, METHOD 2	EROSION CONTROL BLANKET	PERIMETER EROSION BARRIER
			POUND	POUND	POUND	CU YD	ACRE	ACRE	ACRE	SQ YD	FOOT
STA. 19+10 TO STA. 19+76	JOLIET	RT	23	23	23	15.9	0.032	0.007	0.032	32.8	69
STA. 20+56 TO STA. 20+85	JOLIET	LT	23	23	23	22.8	0.023	0.01	0.023	49.6	86
TOTAL			45	45	45	38.7	0.055	0.017	0.055	82.4	155
ROUNDED TOTAL			45	45	45	39	0.25	0.25	0.25	83	155

78000200			
LOCATION			THERMOPLASTIC PAVEMENT MARKING - LINE
			FOOT
STA. 57+84 TO STA. 58+22	JOLIET	RT	61
STA. 57+02 TO STA. 57+38	JOLIET	LT	79
STA. 19+90 TO STA. 20+75	JOLIET	RT	120
TOTAL			260

IDOT DISTRICT ONE

HOT-MIX ASPHALT MIXTURE REQUIREMENTS

MIXTURE TYPE	AIR VOIDS @ NDES
PATCHING	
CLASS D PATCHES (HMA BINDER IL-19.0MM), 15" (IN 5 LIFTS)	4% @ 70 GYR
HMA REPLACEMENT OVER PATCHES (HOT-MIX ASPHALT SURFACE COURSE, MIX "D", N70, (IL-9.5MM); 1.5")	4% @ 70 GYR

NOTES:

THE UNIT WEIGHT USED TO CALCULATE HOT-MIX ASPHALT SURFACE MIXTURES IS 112 LBS/SQ YD/IN

THE "AC TYPE" FOR POLYMERIZED HMA MIXES SHALL BE "SBS/SBR PG 70-22" AND FOR NON-POLYMERIZED HMA THE "AC TYPE" SHALL BE "PG 64-22" UNLESS MODIFIED BY DISTRICT ONE SPECIAL PROVISIONS FOR "PERCENT OF RAP" SEE DISTRICT SPECIAL PROVISIONS. (BMPR)

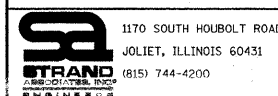
BITUMINOUS MATERIALS (PRIME COAT) APPLICATION RATES

SURFACE TYPE	APPLICATION RATE (GAL/SQ YD)
HOT-MIX ASPHALT SURFACE & BINDER COURSES	0.05
AGGREGATE SUBGRADE	0.25

NOTES:

THE UNIT VOLUME USED TO CALCULATE BITUMINOUS MATERIALS (PRIME COAT) QUANTITIES WAS THE MAXIMUM APPLICATION RATES SHOWN.

FILE NAME = S:\JOLI\62200-62391\62353\016\Micro\Sheet\Sheet\IDOT-sht-schedule.dgn

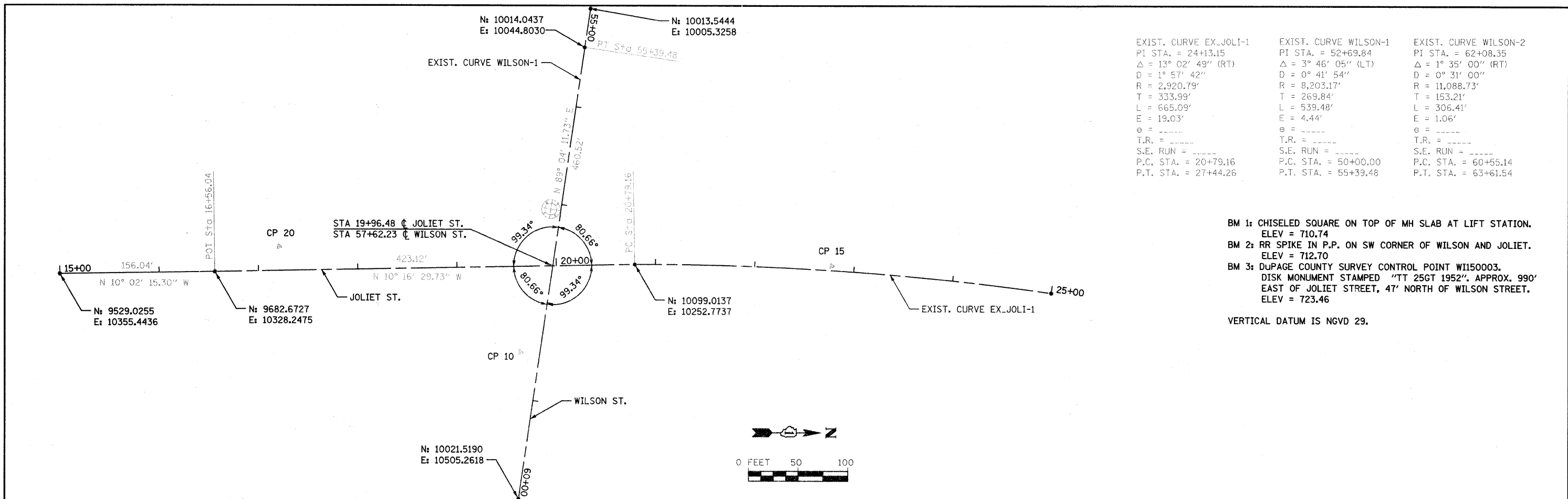


USER NAME = brianf	DESIGNED - -	REVISED -
PLOT SCALE = 50.0000' / IN.	DRAWN - -	REVISED -
PLOT DATE = 2/19/2007	CHECKED - -	REVISED -

STATE OF ILLINOIS
DEPARTMENT OF TRANSPORTATION

SCHEDULE OF QUANTITIES

F.A.U. RTE.	SECTION	COUNTY	TOTAL SHEETS	SHEET NO.
2534	02-00068-00-BR	DUPAGE	15	3
CONTRACT NO. 63561				



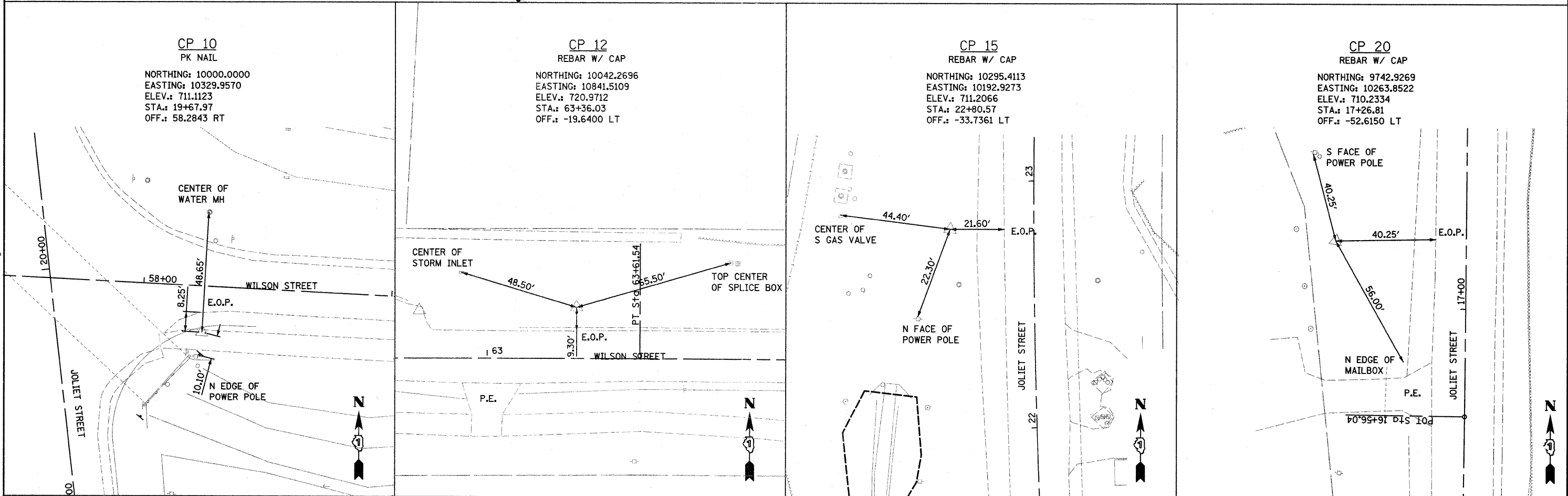
EXIST. CURVE EX_JOLI-1	EXIST. CURVE WILSON-1	EXIST. CURVE WILSON-2
PI STA. = 24+31.15	PI STA. = 52+69.84	PI STA. = 62+08.35
$\Delta = 13^\circ 02' 49''$ (RT)	$\Delta = 3^\circ 46' 05''$ (LT)	$\Delta = 1^\circ 35' 00''$ (RT)
D = $0^\circ 57' 42''$	D = $0^\circ 41' 54''$	D = $0^\circ 31' 00''$
R = 2,920.79'	R = 8,203.17'	R = 11,088.73'
T = 333.99'	T = 269.84'	T = 153.21'
L = 665.09'	L = 539.48'	L = 306.41'
E = 19.03'	E = 4.44'	E = 1.06'
e = -----	e = -----	e = -----
T.R. = -----	T.R. = -----	T.R. = -----
S.E. RUN = -----	S.E. RUN = -----	S.E. RUN = -----
P.C. STA. = 20+79.16	P.C. STA. = 50+00.00	P.C. STA. = 60+55.14
P.T. STA. = 27+44.26	P.T. STA. = 55+39.48	P.T. STA. = 63+61.54

BM 1: CHISELED SQUARE ON TOP OF MH SLAB AT LIFT STATION.
ELEV = 710.74

BM 2: RR SPIKE IN P.P. ON SW CORNER OF WILSON AND JOLIET.
ELEV = 712.70

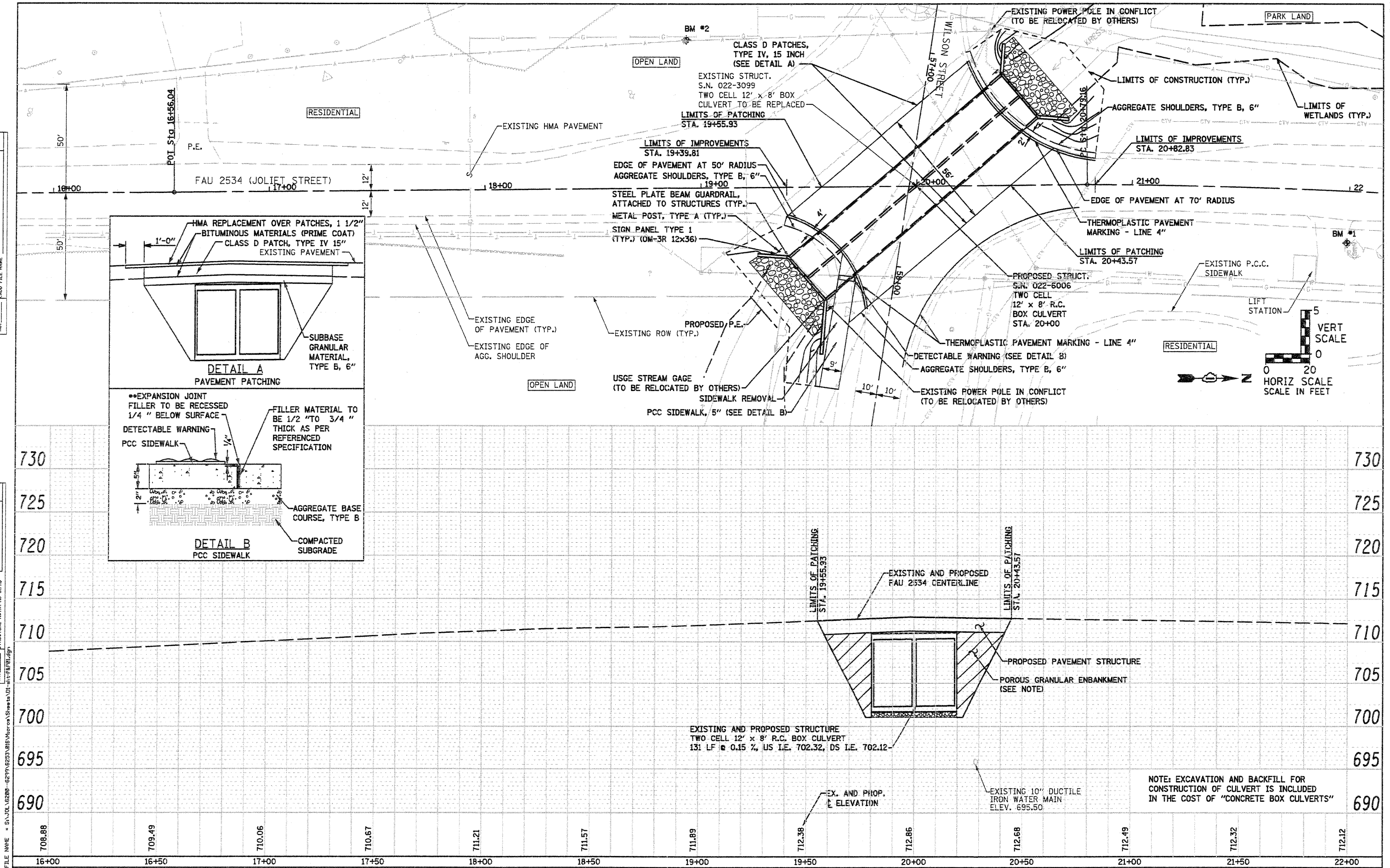
BM 3: DUPAGE COUNTY SURVEY CONTROL POINT W1150003.
DISK MONUMENT STAMPED "TT 25GT 1952". APPROX. 990'
EAST OF JOLIET STREET, 47' NORTH OF WILSON STREET.
ELEV = 723.46

VERTICAL DATUM IS NGVD 29.



DATE	
BY	
PLAN	
SURVEYED	
PLOTTED	
CHECKED	
REL. OF WAY CHECKED	
NO. OF WAY CHECKED	
NO. FILE NAME	

DATE	
BY	
PROFILE	
SURVEYED	
PROFILES CHECKED	
BLK. NOTED	
STRUCTURE NOTATIONS	
NO.	
FILE NAME	



1170 SOUTH HOUBOLT ROAD
JOLIET, ILLINOIS 60431
(815) 744-4200
STRAND
ASSOCIATES, INC.
ENGINEERS

USER NAME = vanessa.f	DESIGNED - VLF	REVISED -
PLOT SCALE = 40.0000" / IN.	CHECKED - JAR	REVISED -
PLOT DATE = 7/14/2011	DRAWN - VLF	REVISED -
	CHECKED - JAR	REVISED -

STATE OF ILLINOIS
DEPARTMENT OF TRANSPORTATION

FAU 2534 (JOLIET STREET)
PLAN AND PROFILE

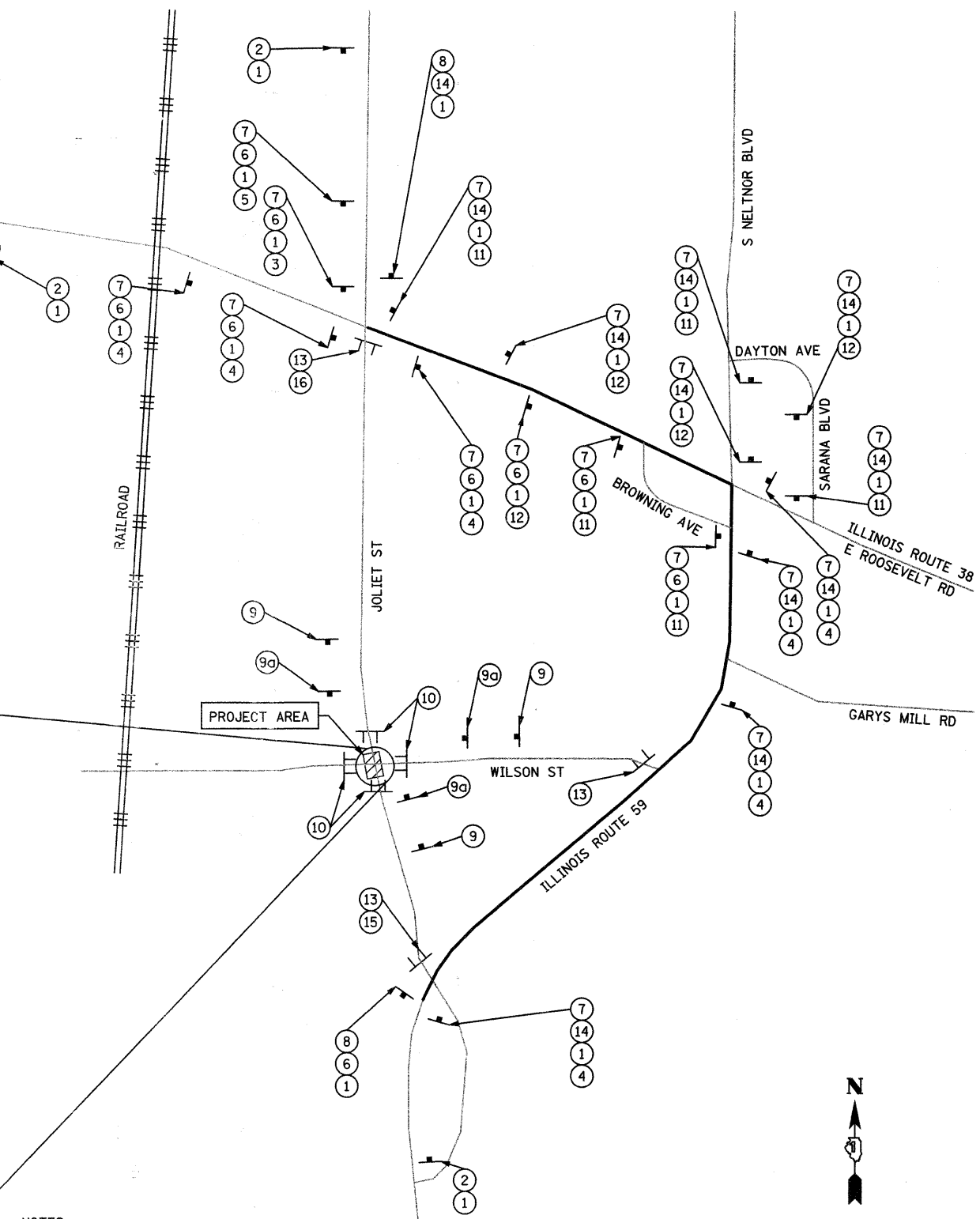
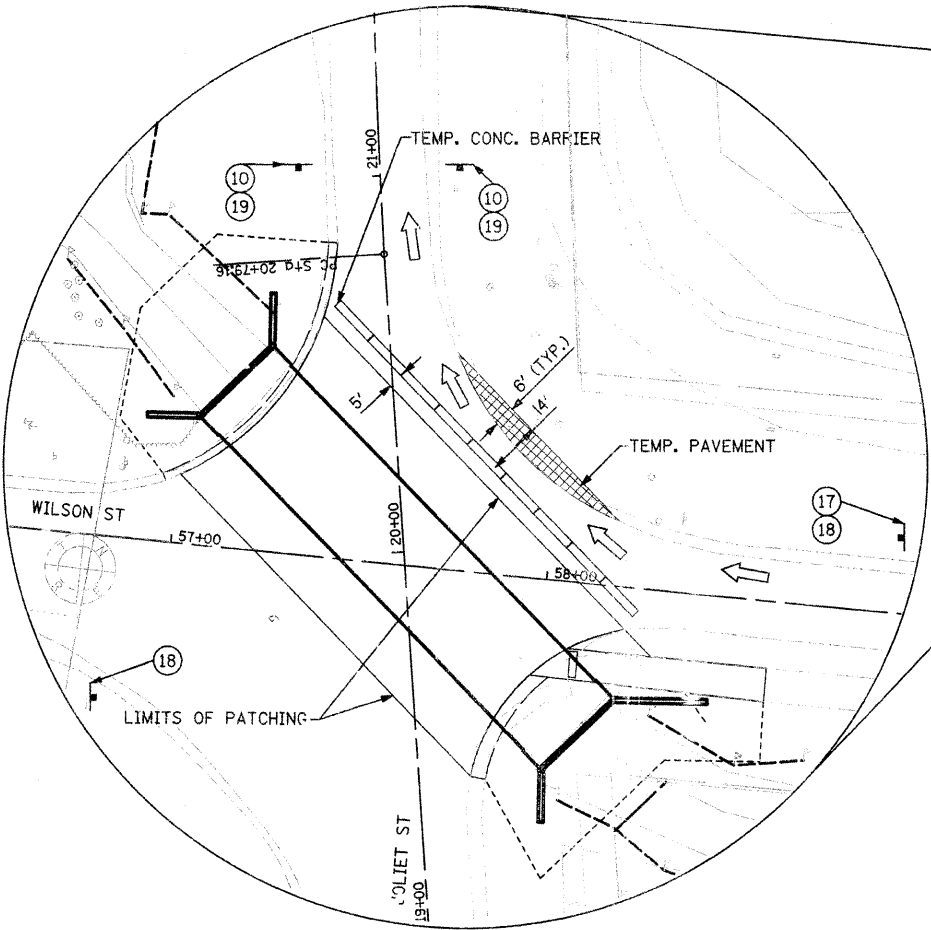
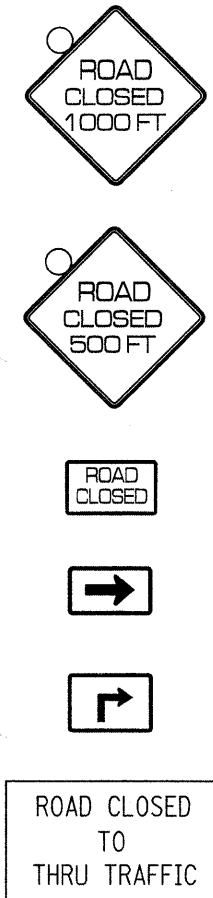
SCALE: AS SHOWN SHEET NO. 1 OF 1 SHEETS STA. 16+00 TO STA. 22+00

F.A.U. RTE.	SECTION	COUNTY	TOTAL SHEETS	SHEET NO.
2534	02-00068-00-BR	DLPAGE	15	5
FED. ROAD DIST. NO. 1 ILLINOIS FED. AID PROJECT			CONTRACT NO. 63561	

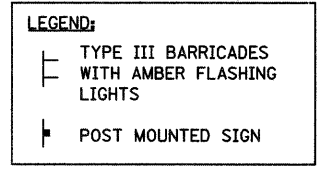
SIGN LEGEND:

- ① W17-1101 24x30
- ② W20-2 48x48 W/AMBERLIGHT
- ③ M6-1L 21x15
- ④ M6-3 21x15
- ⑤ M5-1L 21x15
- ⑥ M3-3 24x12
- ⑦ W4-8 24x12
- ⑧ M4-89 24x12
- ⑨ W20-3 48x48 W/AMBER LIGHT
- 9a W20-2 48x48 W/AMBER LIGHT
- ⑩ R11-2 48x30
- ⑪ M6-1R 21x15
- ⑫ M5-1R 21x15
- ⑬ R11-4 60x30

- ⑭ M3-1 24x12
- ⑮ M4-10R 48x18
- ⑯ M4-10L 48x18
- ⑰ W20-4 48x48
- ⑱ R3-R5 36x30
- ⑲ R5-1 36x36



- NOTES:**
- EXISTING SIGNS WHICH CONFLICT WITH THE MARKED DETOUR SHALL BE COVERED. COST OF COVERING EXISTING SIGNS SHALL BE INCLUDED IN THE COST FOR TRAFFIC CONTROL AND PROTECTION FOR TEMPORARY DETOUR.
 - ALL SIGNS SHALL BE ORANGE WITH BLACK LETTERS, EXCEPT SIGN NUMBER 19.
 - SIGN PLACEMENT AND SPACING WILL BE AS DIRECTED BY THE RESIDENT ENGINEER.
 - CONTRACTOR SHALL COORDINATE ITS CONSTRUCTION OPERATIONS WITH THOSE OF OTHER CONTRACTORS AND ENTITIES TO ENSURE EFFICIENT AND ORDERLY INSTALLATION OF EACH PART OF THE WORK.
 - ACCESS WILL BE PROVIDE FOR LOCAL TRAFFIC TO MAKE THE MOVEMENT FROM WESTBOUND WILSON STREET TO NORTHBOUND JOLIET STREET.



FILE NAME = S:\JOLIET\2008-02\99\B253\016\Micro\Sheets\01-shit-intersec.dgn



1170 SOUTH HOUBOLT ROAD
JOLIET, ILLINOIS 60431
(815) 744-4200

USER NAME = brianf	DESIGNED - -	REVISED -
PLOT SCALE = 10,0000 1/ IN.	DRAWN - -	REVISED -
PLOT DATE = 2/8/2011	CHECKED - -	REVISED -
	DATE - -	REVISED -

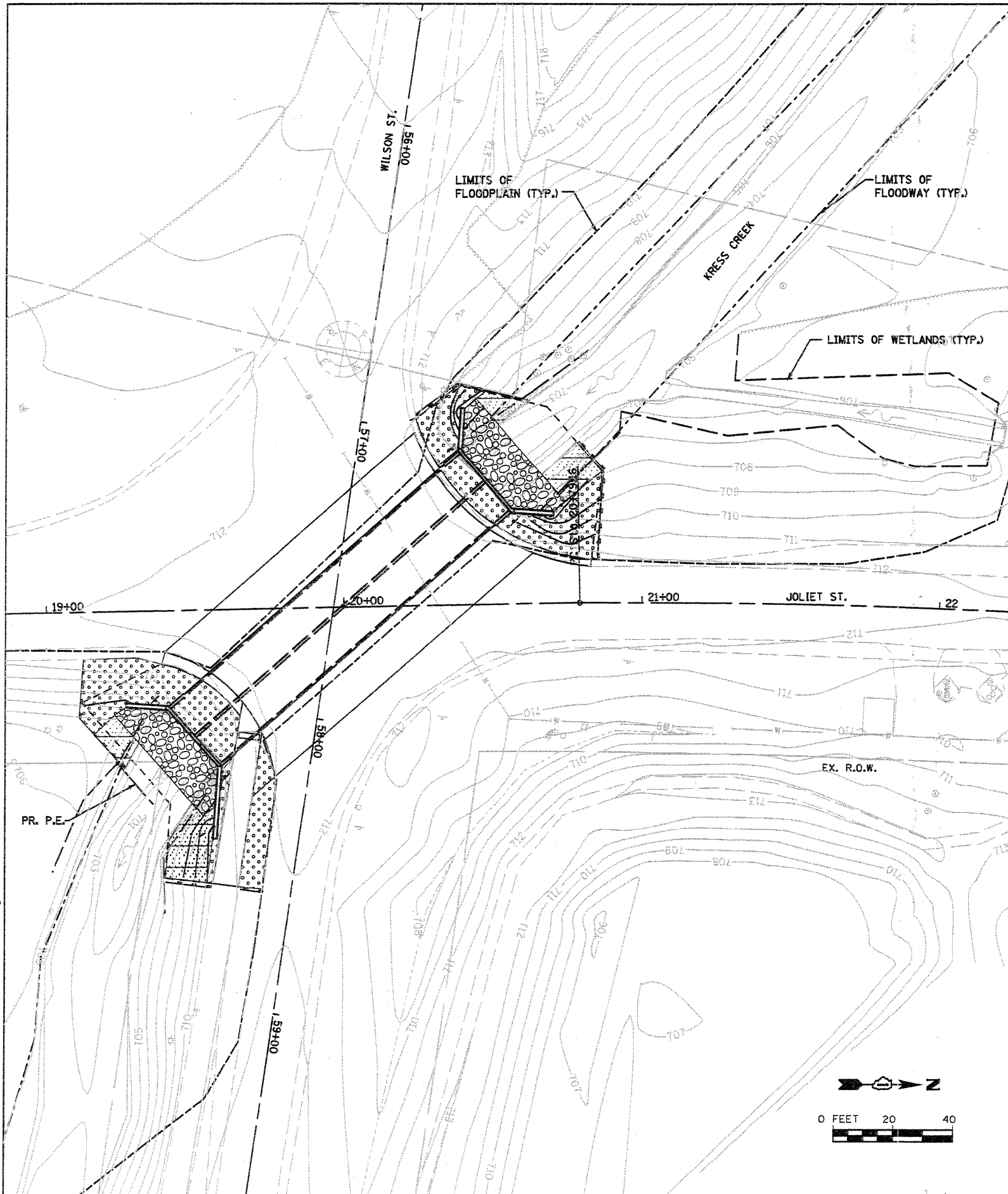
**STATE OF ILLINOIS
DEPARTMENT OF TRANSPORTATION**

TEMPORARY DETOUR PLAN

SCALE: AS SHOWN SHEET NO. OF SHEETS STA. TO STA.

F.A.U. RTE. 2534	SECTION 02-00068-00-BR	COUNTY DUPAGE	TOTAL SHEETS 14	SHEET NO. 6
CONTRACT NO. 63561				

FED. ROAD DIST. NO. 1 ILLINOIS FED. AID PROJECT



SEQUENCE OF MAJOR CONSTRUCTION ACTIVITIES:

1. PLACEMENT OF PERIMETER EROSION BARRIER PRIOR TO THE COMMENCEMENT OF ANY CULVERT WORK,
2. MAINTAIN POSITIVE FLOW OF KRESS CREEK DURING REMOVAL AND PLACEMENT OF NEW BOX CULVERT,
3. REMOVAL OF THE EXISTING STRUCTURE
4. CONSTRUCTION OF THE REPLACEMENT, PLACEMENT, MAINTENANCE, REMOVAL AND PROPER CLEAN-UP OF TEMPORARY EROSION CONTROL,
5. PLACEMENT OF PERMANENT EROSION CONTROLS, SUCH AS RIPRAP, SEEDING, EROSION CONTROL BLANKET, ETC.,
6. FINAL GRADING, PAVING AND OTHER MISCELLANEOUS ITEMS

SEQUENCE OF CONSTRUCTION FOR PLACEMENT OF THE CULVERT:

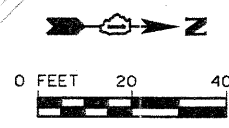
1. DURING WORK IN CREEK, WORK MUST BE TIMED TO TAKE PLACE DURING LOW OR NO-FLOW CONDITIONS.
2. CONCENTRATED FLOW MUST BE ISOLATED FROM THE WORK AREA USING A NON-ERODIBLE COFFERDAM (STEEL SHEETS, AQUA BARRIERS, ETC.). EXACT MEANS AND METHODS SHOULD BE DISCUSSED DURING A SCHEDULED PRE-CONSTRUCTION MEETING.
3. IF BYPASS IS NECESSARY, THE INLET OF THE HOSE SHALL BE PLACED IN A SUMP PIT AND THE OUTLET PLACED ON A NON-ERODIBLE, ENERGY DISSIPATING SURFACE PRIOR TO REJOINING THE CREEK FLOW.
4. IF DEWATERING THE CONSTRUCTION AREA IS NECESSARY, PLEASE BE SURE TO FILTER ALL WATER BY USING FILTER BAGS OR AN ALTERNATIVE MEASURE. WATER MUST HAVE SEDIMENT REMOVED BEFORE BEING ALLOWED TO RETURN TO THE ORIGINAL CREEK.
5. THE SIDE SLOPES MUST BE RESEED AND STABILIZED WITH AN APPROPRIATE EROSION CONTROL BLANKET PRIOR TO ACCEPTING FLOWS. THE BOTTOM OF THE SWALE MUST BE BROUGHT BACK TO ITS ORIGINAL GRADE AND STABLE ENOUGH TO ACCEPT FLOWS.

SEDIMENT AND EROSION CONTROL NOTES:

1. THE SOIL AND EROSION CONTROL PROVISIONS SHALL BE CONSTRUCTED IN ACCORDANCE WITH THE CONSTRUCTION SPECIFICATIONS OF THE ILLINOIS URBAN MANUAL, LATEST EDITION
2. ALL EROSION CONTROL MEASURES SHALL BE INSTALLED PRIOR TO THE ONSET OF CONSTRUCTION
3. ALL EROSION AND SEDIMENT CONTROL MEASURES MUST BE MAINTAINED IN AN EFFECTIVE WORKING CONDITION. SEDIMENT CONTROL MEASURES SHALL BE REPAIRED, REPLACED, AND MAINTAINED AFTER A SINGULAR OR CUMULATIVE RAINFALL EVENT(S) OF 0.5 INCHES OR MORE OVER A 24-HOUR PERIOD
4. INSPECTION AND MAINTENANCE RECORDS FOR THE EROSION AND SEDIMENT CONTROL MEASURES ARE REQUIRED TO BE KEPT ON-SITE BY THE CONTRACTOR.
5. ADDITIONAL EROSION CONTROL PROVISIONS TO THOSE SHOWN ON THE PLANS MAY BE REQUIRED BY THE DUPAGE COUNTY ENFORCEMENT OFFICER AS WARRANTED BY SITE CONDITIONS.
6. SEEDING, CLASS 4A AND EROSION CONTROL BLANKET SHALL BE USED ALONG THE BANKS OF THE CREEK.
7. IT SHALL BE THE RESPONSIBILITY OF THE CONTRACTOR TO DIVERT THE STREAM FLOW DURING CONSTRUCTION IN ORDER TO KEEP THE CONSTRUCTION AREA FREE OF WATER. THE METHOD OF WATER DIVERSION SHALL BE SUBJECT TO THE APPROVAL OF THE ENGINEER AND DUPAGE COUNTY DIVISION OF ENVIRONMENTAL CONCERNS AND COST SHALL BE INCLUDED WITH "CONCRETE BOX CULVERTS".
8. ALL ADJACENT STREETS MUST BE KEPT CLEAR OF DEBRIS, INSPECTED DAILY AND CLEANED WHEN NECESSARY.
9. NO WORK SHALL BE PERFORMED IN FLOWING WATER. WORK IN AND NEAR THE CRITICAL AREAS SHOULD BE ISOLATED FROM CONCENTRATED FLOWS OR STREAM FLOW. ONCE WORK IN THIS AREA BEGINS, PRIORITY SHALL BE GIVEN TO THE COMPLETION OF THE WORK AND FINAL STABILIZATION OF ALL DISTURBED AREAS.
10. NO STORMWATER MAY BE CONVEYED THROUGH THE CREEK DURING THE INSTALLATION OF THE CULVERT, REMOVAL OF THE CULVERT, OR THE RESTORATION OF THE CULVERT UNTIL THE SIDE SLOPES HAVE BEEN RESTORED AND STABILIZED.
11. UNLESS OTHERWISE INDICATED, ALL VEGETATIVE AND STRUCTURAL EROSION AND SEDIMENT CONTROL PRACTICES WILL BE CONSTRUCTED ACCORDING TO MINIMUM STANDARDS AND SPECIFICATIONS IN THE ILLINOIS URBAN MANUAL REVISED FEBRUARY 2002.
12. THE KANE-DUPAGE SOIL AND WATER CONSERVATION DISTRICT (KDSWCD) MUST BE NOTIFIED ONE WEEK PRIOR TO THE PRE-CONSTRUCTION CONFERENCE, ONE WEEK PRIOR TO THE COMMENCEMENT OF LAND DISTURBING ACTIVITIES, AND ONE WEEK PRIOR TO THE FINAL INSPECTION.
13. A COPY OF THE APPROVED EROSION AND SEDIMENT CONTROL PLAN SHALL BE MAINTAINED ON THE SITE AT ALL TIMES.
14. PRIOR TO COMMENCING LAND-DISTURBING ACTIVITIES IN AREAS OTHER THAN INDICATED ON THESE PLANS (INCLUDING BUT NOT LIMITED TO, ADDITIONAL PHASES OF DEVELOPMENT AND OFF-SITE BORROW OR WASTE AREAS) A SUPPLEMENTARY EROSION CONTROL PLAN SHALL BE SUBMITTED TO THE OWNER FOR REVIEW BY THE KDSWCD.
15. THE CONTRACTOR IS RESPONSIBLE FOR INSTALLATION OF ANY ADDITIONAL EROSION CONTROL MEASURES NECESSARY TO PREVENT EROSION AND SEDIMENTATION AS DETERMINED BY THE KDSWCD.
16. DURING DEWATERING OPERATIONS, WATER WILL BE PUMPED INTO SEDIMENT BASINS OR SILT TRAPS. DEWATERING DIRECTLY INTO FIELD TILES OR STORMWATER STRUCTURES IS PROHIBITED.
17. IT IS THE RESPONSIBILITY OF THE LANDOWNER AND/OR GENERAL CONTRACTOR TO INFORM ANY SUB-CONTRACTOR(S) WHO MAY PERFORM WORK ON THIS PROJECT, OF THE REQUIREMENTS IN IMPLEMENTING AND MAINTAINING THESE EROSION CONTROL PLANS AND THE NATIONAL POLLUTANT DISCHARGE ELIMINATION SYSTEM (NPDES) PERMIT REQUIREMENTS SET FORTH BY THE ILLINOIS EPA.
18. ALL STOCKPILE LOCATIONS SHALL BE PLACED IN AREAS OUTSIDE OF THE FLOODPLAIN AT A LOCATION APPROVED BY THE ENGINEER. ALL STOCKPILE LOCATIONS SHALL BE SURROUNDED BY SILT FENCE.

LEGEND:

- STONE RIPRAP, CLASS A4
- SEEDING, CLASS 1A AND MULCH, METHOD 2
- SEEDING, CLASS 4A AND EROSION CONTROL BLANKET
- PERIMETER EROSION BARRIER



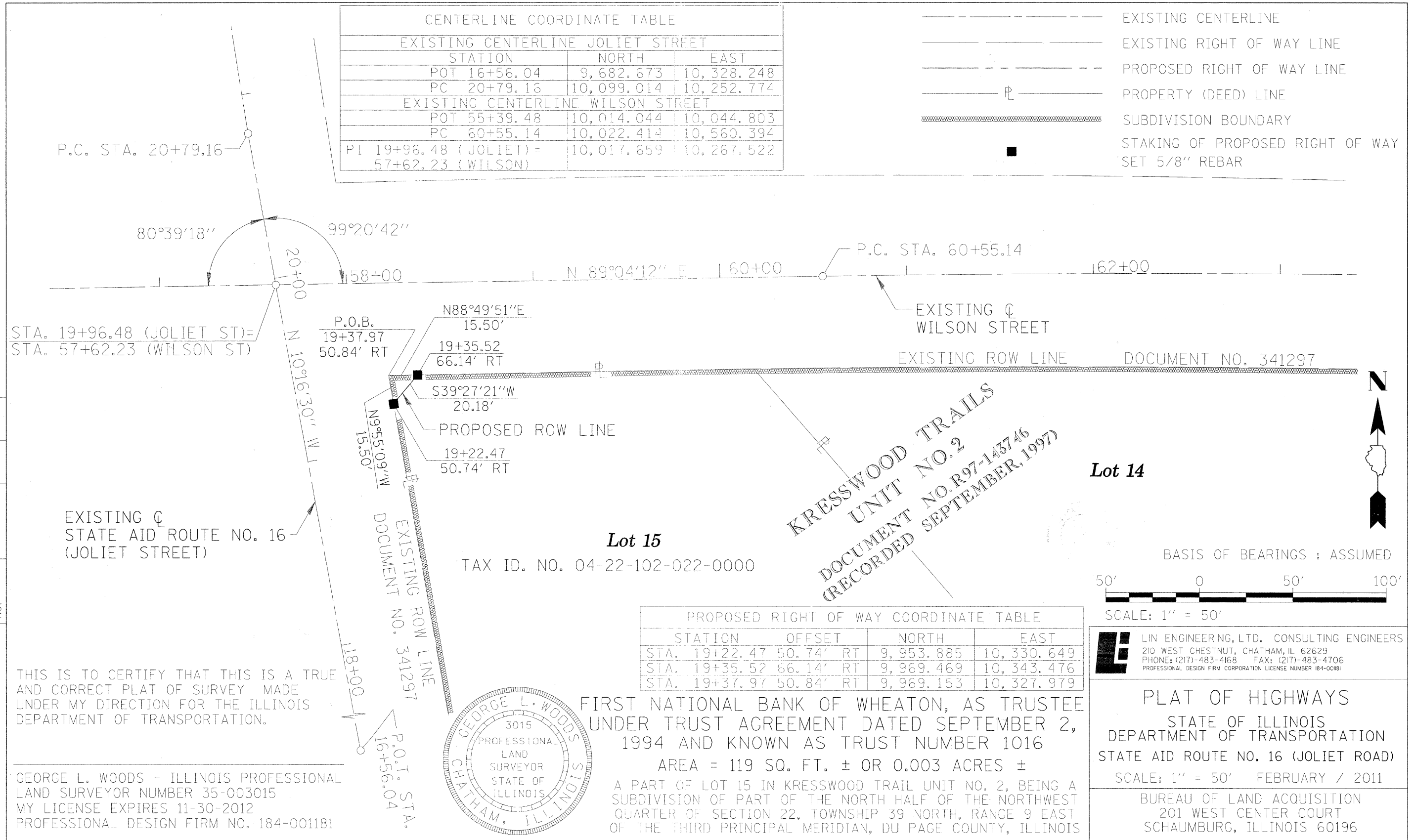
FILE NAME = S:\101\62898-6290\62831\015\101\62898-6290\62831\015\101\62898-6290.dgn

	1170 SOUTH HOUBOLT ROAD JOLIET, ILLINOIS 60431 (815) 744-4200	USER NAME = vanessa	DESIGNED - -	REVISED -	STATE OF ILLINOIS DEPARTMENT OF TRANSPORTATION	EROSION CONTROL SHEET				F.A.U. RTE. 2534	SECTION 02-00068-00-BR	COUNTY DUPAGE	TOTAL SHEETS 15	SHEET NO. 7
	PLOT SCALE = 48,0000' / IN. PLOT DATE = 8/3/2011	DRAWN - - CHECKED - - DATE - -	REVISED - REVISED - REVISED -	SCALE: AS SHOWN SHEET NO. OF SHEETS STA. TO STA.				CONTRACT NO. 63561 FED. ROAD DIST. NO. 1 (ILLINOIS) FED. AID PROJECT						

SECTION 22, T39N, R9E OF THE THIRD P.M., DU PAGE COUNTY

CENTERLINE COORDINATE TABLE		
EXISTING CENTERLINE JOLIET STREET		
STATION	NORTH	EAST
POT 16+56.04	9,682.673	10,328.248
PC 20+79.16	10,099.014	10,252.774
EXISTING CENTERLINE WILSON STREET		
POT 55+39.48	10,014.044	10,044.803
PC 60+55.14	10,022.414	10,560.394
PI 19+96.48 (JOLIET) = 57+62.23 (WILSON)	10,017.659	10,267.522

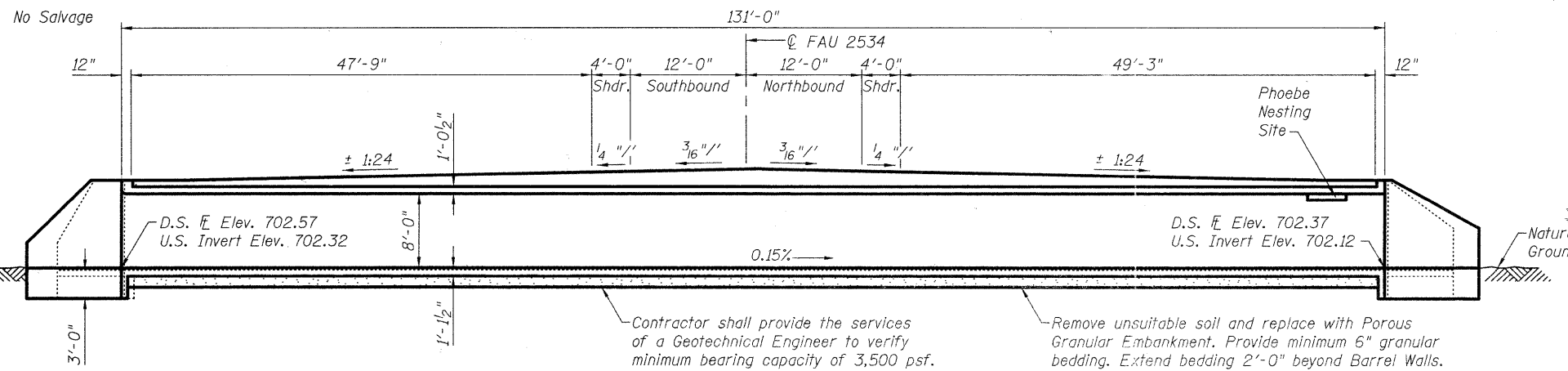
- EXISTING CENTERLINE
- EXISTING RIGHT OF WAY LINE
- PROPOSED RIGHT OF WAY LINE
- ⊥----- PROPERTY (DEED) LINE
- ===== SUBDIVISION BOUNDARY
- STAKING OF PROPOSED RIGHT OF WAY SET 5/8" REBAR



DATE				
BY				
COMPUTED	CHECKED	INKED	INK CHECKED	
R. O. W. PLAT	NOTE BOOK	NO.		

Benchmark: Du Page County survey control point W150003. Disk monument stamped "TT 25GT 1952". Approx. 990' east of Joliet Street, 47' north of Wilson Street, Elev. 723.46

Existing Structure: S.N. 022-3099 built in 1933 as Section 70B-15D as Double Cell 8' x 12' R.C. Box Culvert 24'-0" edge of shoulder to edge of shoulder. Culvert length of 131'-0". Existing culvert to be removed and replaced. Traffic to be maintained using a detour.

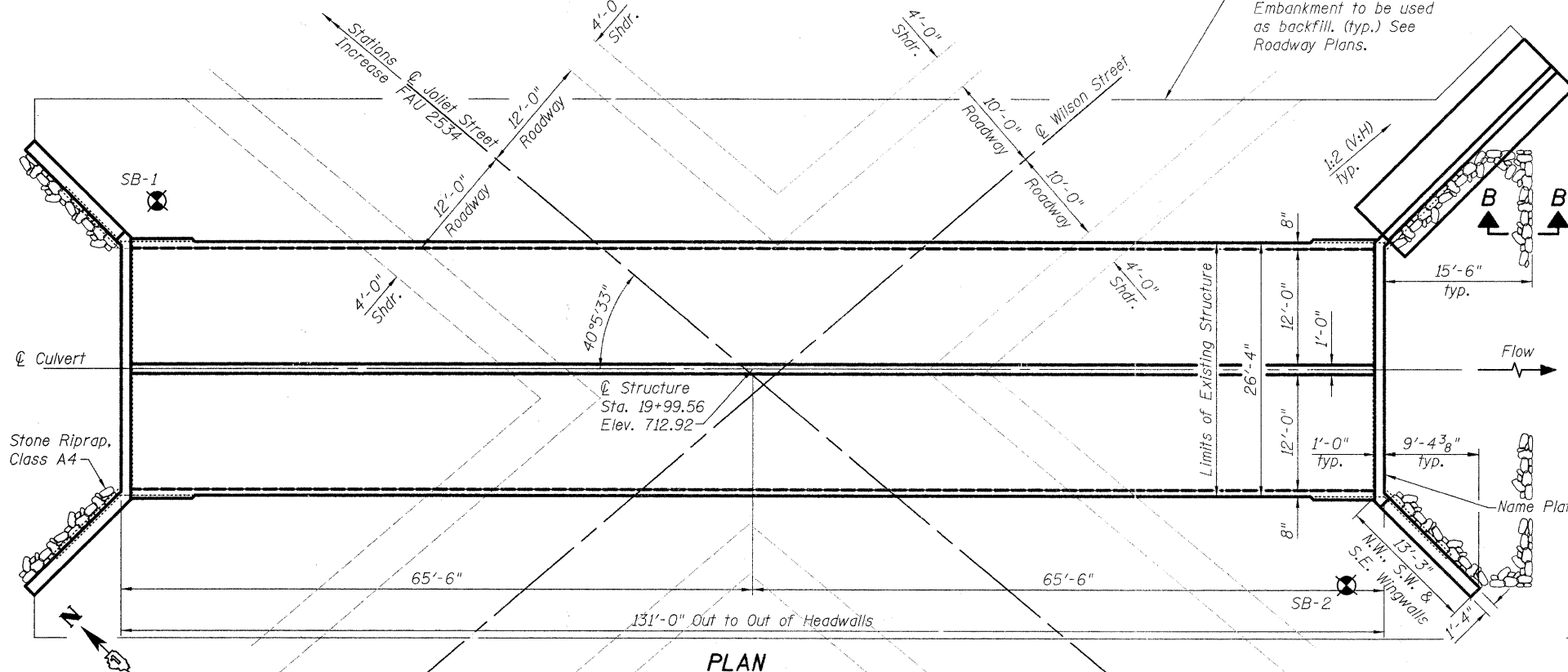


DESIGN SCOUR ELEVATION TABLE

Design Scour Elevation (ft.)	D.S. Invert	U.S. Invert
	699.12	699.32

LONGITUDINAL SECTION

All roadway dimensions are @ right L's to roadway @ (Looking North)



BILL OF MATERIAL

ITEM	UNIT	TOTAL
Porous Granular Embankment	Cu Yd	81
Stone Riprap, Class A4	Sq Yd	136
Filter Fabric	Sq Yd	136
Removal Of Existing Structures	Each	1
Removal And Disposal Of Unsuitable Material For Structures	Cu Yd	7
Concrete Structures	Cu Yd	16
Reinforcement Bars, Epoxy Coated	Pound	96,290
Name Plates	Each	1
Concrete Box Culverts	Cu Yd	417
Waterproofing Membrane System	Sq Yd	401

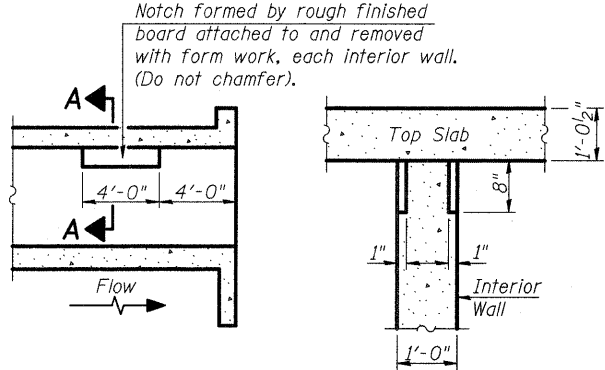
WATERWAY INFORMATION

Drainage Area = 18.1 mi² Low Grade Elev. 711.78 @ Sta. 20+41

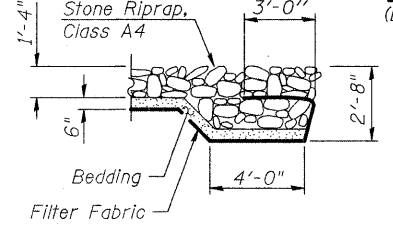
Flood	Freq. Yr.	Q C.F.S.	Opening Sq. Ft.		Nat. H.W.E.	Head - Ft.		Headwater El.	
			Exist.	Prop.		Exist.	Prop.	Exist.	Prop.
Design	10	526	117	117	707.21	0.07	0.07	707.28	707.28
Base	30	719	131	131	707.76	0.06	0.06	707.82	707.82
Max. Calc.	100	932	143	143	708.29	0.03	0.03	708.32	708.32
	500	1290	168	168	709.13	0.00	0.00	709.13	709.13

GENERAL NOTES

Reinforcement bars shall conform to the requirements of ASTM A 706 Gr 60. See Special Provisions.
 Reinforcement bars designated (E) shall be epoxy coated.
 Layout of slope protection system may be varied to suit ground conditions in the field as directed by the Engineer.
 Construction time is to be kept to a minimum. As a result, the Contractor can elect to use a precast box culvert at no additional cost to the contract.



PHOEBE NESTING SITE DETAILS
(Downstream End Only)



INDEX OF SHEETS

- 1 General Plan and Elevation
- 2-3 Culvert Details
- 4-5 Soil Boring Logs

DESIGN SPECIFICATIONS

2002 AASHTO Standard Specs. For Highway Bridges

LOADING HS 20-44

Allow 50#/sq. ft. for future wearing surface.

DESIGN STRESSES

FIELD UNITS

f'c = 3,500 psi
 fy = 60,000 psi (Reinforcement)

KRESS CREEK
 BUILD BY CITY OF WEST CHICAGO
 DuPAGE COUNTY
 SEC. 02-00068-00-BR
 F.A.U. RT. 2534 STA. 19+99.56
 STR. NO. 022-6006 LOADING HS-20

NAME PLATE

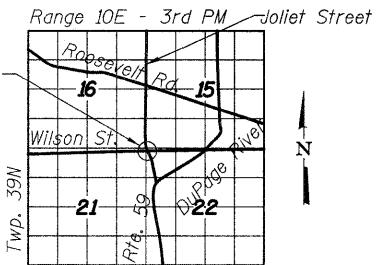
See Std. 515001



"I certify that to the best of my knowledge, information and belief, this bridge design is structurally adequate for the design loading shown on the plans. The design is an economical one for the style of structure and complies with requirements of the current AASHTO Standard Specifications for Highway Bridges."

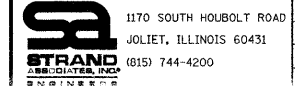
ILLINOIS STRUCTURAL NO. 081-005819 (Expires 11/30/12)

Note: Due to the low fill over culvert provide Waterproofing Membrane System over the top of Culvert.



LOCATION SKETCH

FILE NAME = S:\JUL162006-6299\2534\016\Micro\Sheets\STR Plans\0226006-X-CPE-001.dgn



USER NAME = br1anf	DESIGNED RRD	REVISED -
PLOT SCALE =	CHECKED AJS	REVISED -
PLOT DATE = 2/8/22	DRAWN BJF	REVISED -
	CHECKED RPD	REVISED -

STATE OF ILLINOIS
 DEPARTMENT OF TRANSPORTATION

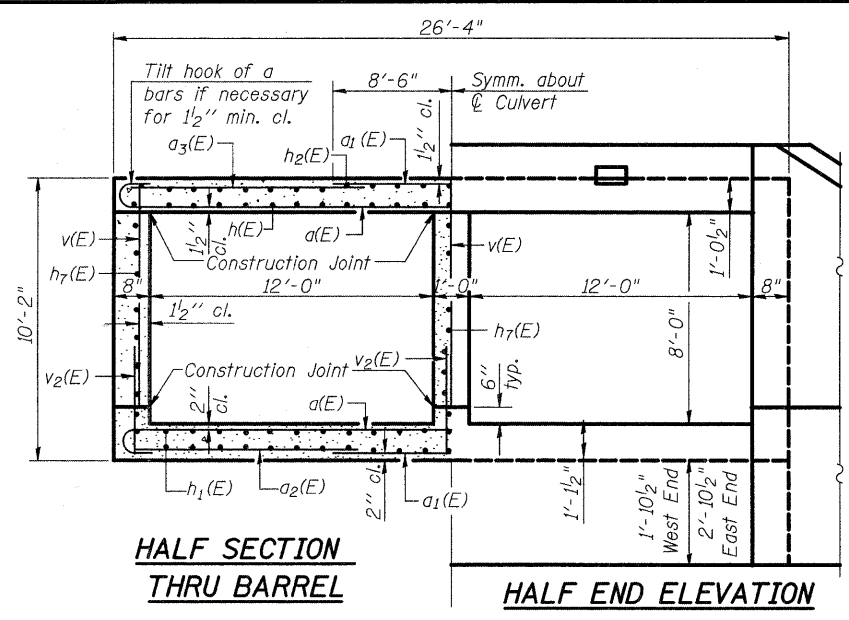
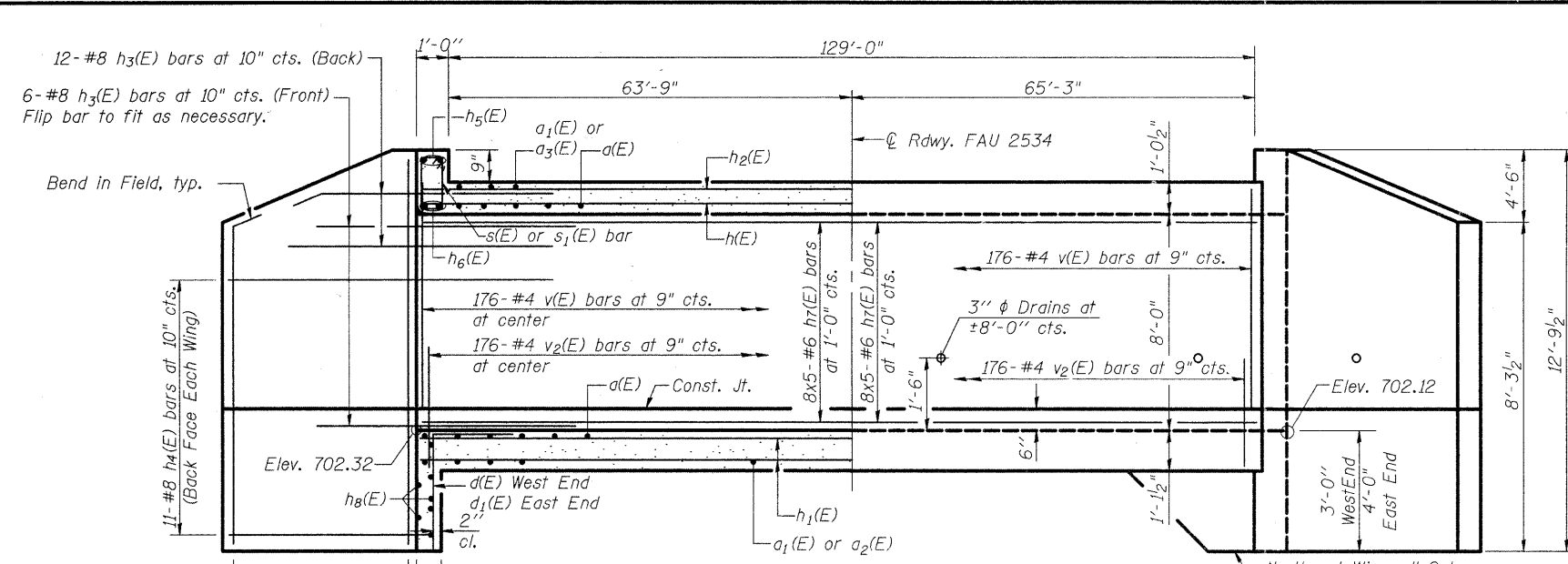
GENERAL PLAN AND ELEVATION
 STRUCTURE NO. 022-6006

F.A.U. RTE.	SECTION	COUNTY	TOTAL SHEETS	SHEET NO.
2534	02-00068-00-BR	DuPAGE	15	9

CONTRACT NO. 63561

SHEET NO. 1 OF 5 SHEETS

ILLINOIS FED. AID PROJECT

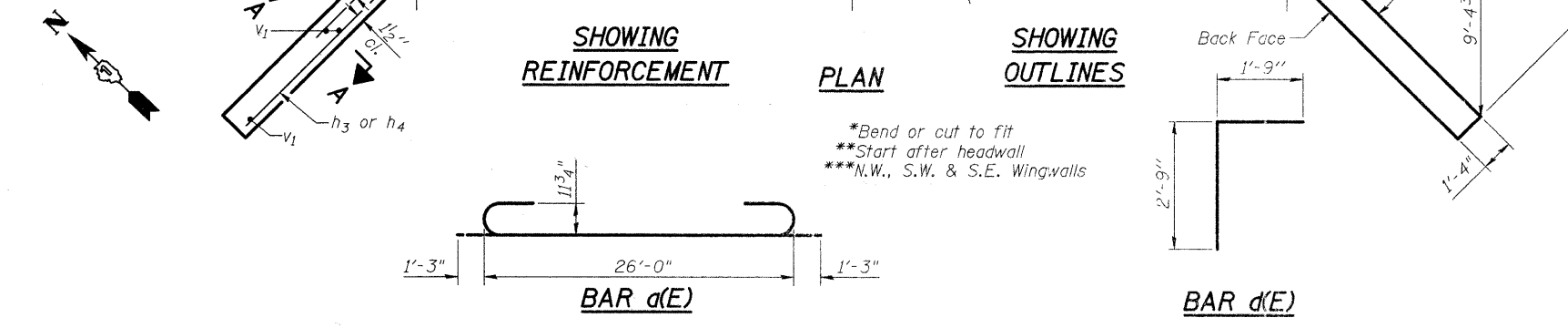
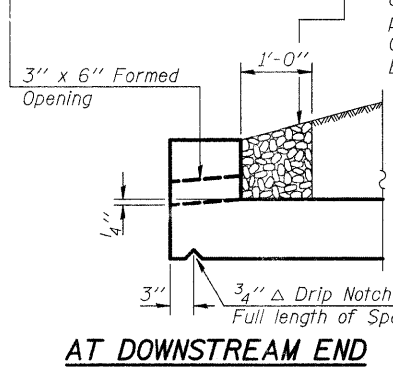
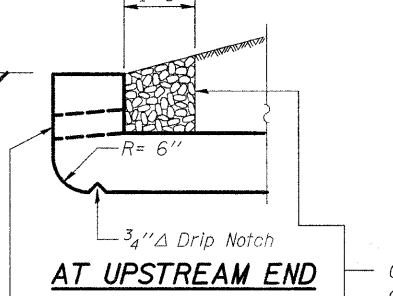
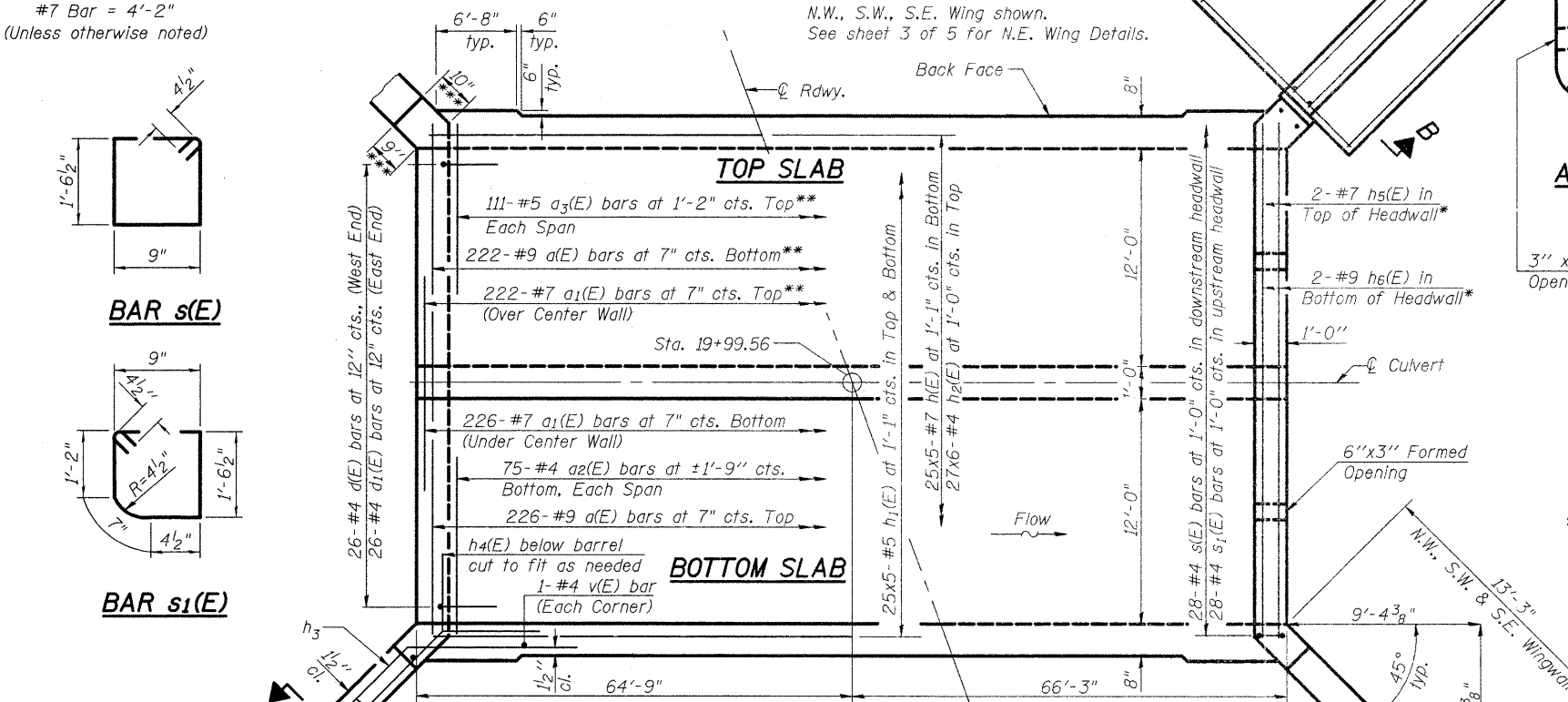


MIN. BAR LAP
 #4 Bar = 2'-7"
 #5 Bar = 3'-3"
 #7 Bar = 4'-2"
 (Unless otherwise noted)

HALF LONG SECTION
 Showing bars in Center Wall

HALF ELEVATION
 Showing bars in Outside Wall

Notes:
 A distance of half the length of the wingwall but not less than six feet of the barrel shall be poured monolithically with the wingwalls, except for N.E. wing. Bars indicated thus 12x4-#5 etc. indicates 12 lines of bars with 4 lengths per line. See Sheet 3 of 5 for Section B-B.



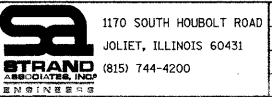
Coarse aggregate full length of both headwalls. To be placed by Grading Contractor. Cost included with Concrete Box Culverts.

BILL OF MATERIAL

Bar	No.	Size	Length	Shape
a(E)	448	#9	28'-6"	U
a1(E)	448	#7	17'-0"	—
a2(E)	150	#4	7'-1"	—
a3(E)	222	#5	7'-9"	—
d(E)	26	#4	4'-6"	—
d1(E)	32	#4	5'-6"	—
c(E)	28	#4	26'-0"	—
c1(E)	44	#4	7'-0"	—
c2(E)	80	#5	7'-8"	—
c3(E)	44	#4	4'-8"	—
h(E)	125	#7	29'-7"	—
h1(E)	250	#5	28'-10"	—
h2(E)	162	#4	24'-0"	—
h3(E)	54	#8	9'-8"	—
h4(E)	33	#8	16'-3"	—
h5(E)	4	#7	26'-7"	—
h6(E)	4	#9	26'-7"	—
h7(E)	120	#6	29'-4"	—
h8(E)	6	#7	26'-1"	—
h9(E)	21	#4	23'-7"	—
n(E)	27	#6	5'-2"	—
n1(E)	25	#4	3'-5"	—
s(E)	28	#4	5'-4"	—
s1(E)	28	#4	5'-2"	—
t(E)	70	#4	7'-0"	—
v(E)	532	#4	8'-5"	—
v1(E)	12	#4	12'-6"	—
v2(E)	528	#4	4'-3"	—
v3(E)	7	#4	11'-11"	—
v4(E)	27	#5	11'-0"	—
v5(E)	2	#6	7'-4"	—
v6(E)	2	#6	11'-0"	—
w(E)	12	#5	23'-7"	—
Concrete Box Culverts			Cu. Yd.	417
Reinforcement Bars			Pound	96,290

DB-H-0

7-1-10



USER NAME = brianf	DESIGNED RRD	REVISED -
PLLOT SCALE =	CHECKED AJS	REVISED -
PLLOT DATE = 2/8/2011	DRAWN BJF	REVISED -
	CHECKED RRD	REVISED -

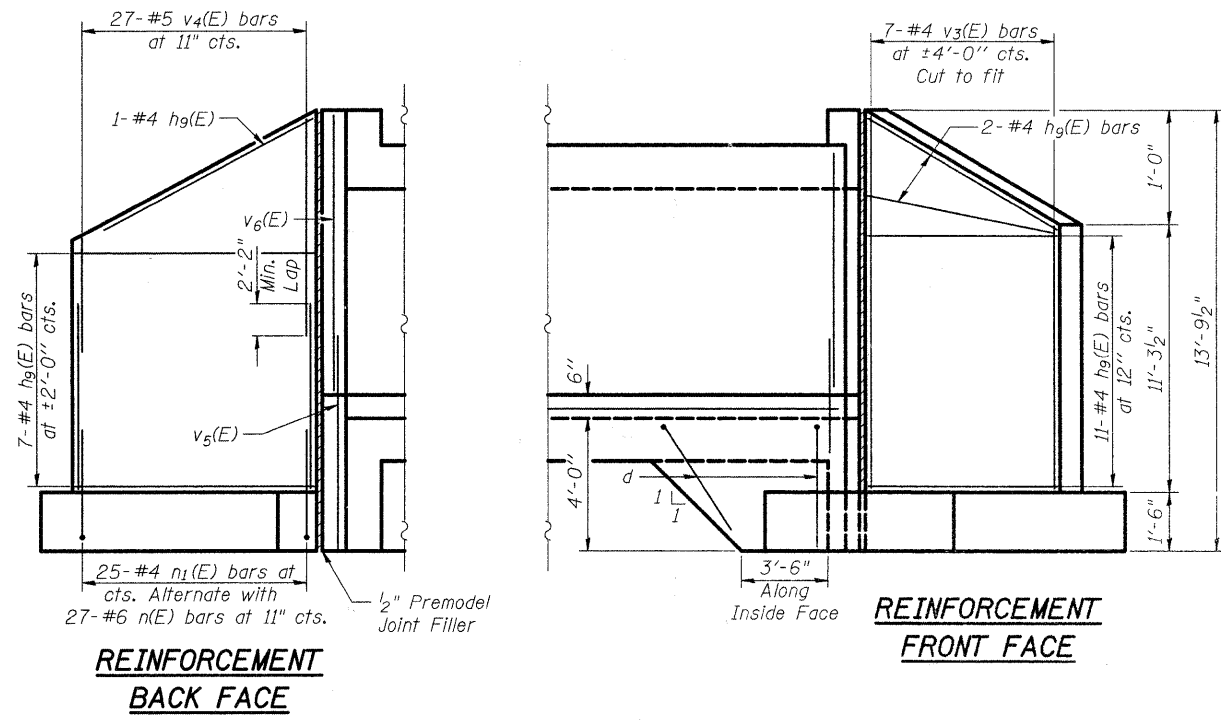
STATE OF ILLINOIS
 DEPARTMENT OF TRANSPORTATION

CULVERT DETAILS
 STRUCTURE NO. 022-6006

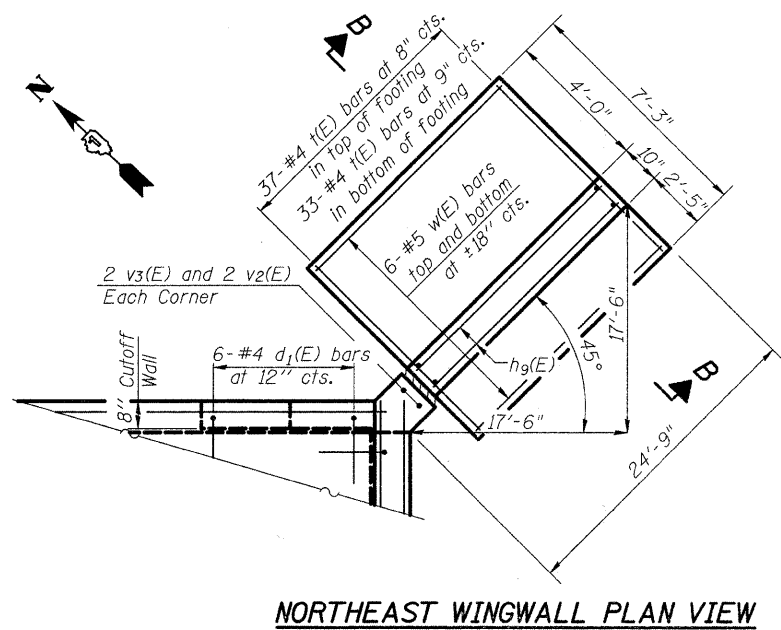
F.A.U. RTE. 2534	SECTION 02-00068-00-BR	COUNTY DuPAGE	TOTAL SHEETS 15	SHEET NO. 10
			CONTRACT NO. 63561	

SHEET NO. 2 OF 3 SHEETS

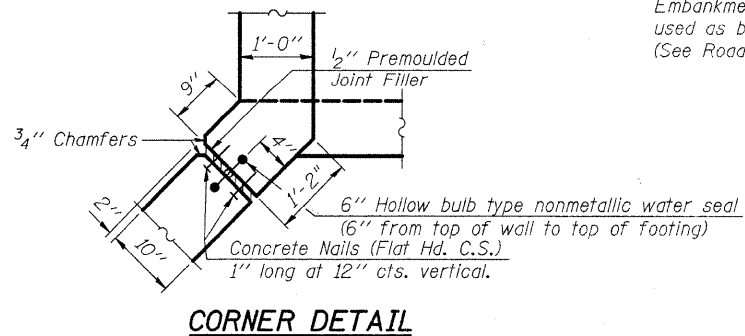
NOTES: SEE STD. PROJECT



NORTH EAST WINGWALL DETAILS
See Sheet 2 of 5 for Barrel Reinforcement.

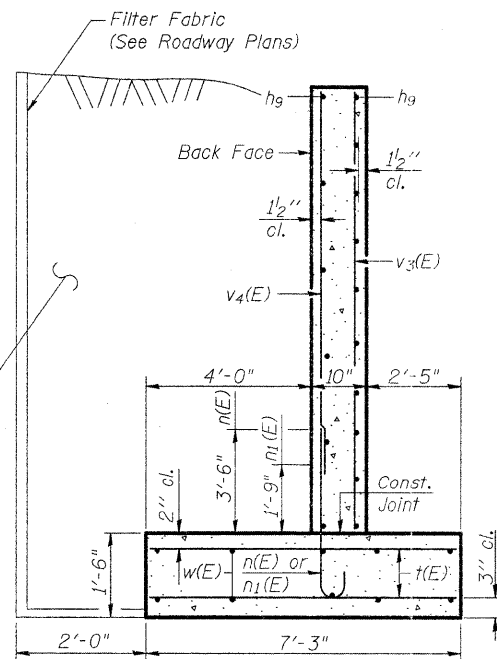


NORTHEAST WINGWALL PLAN VIEW

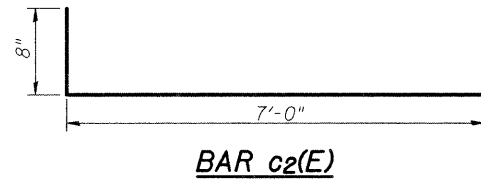


CORNER DETAIL

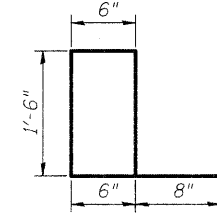
Porous Granular Embankment to be used as backfill. (See Roadway Plans)



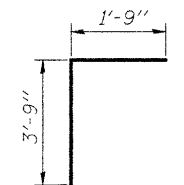
SECTION B-B



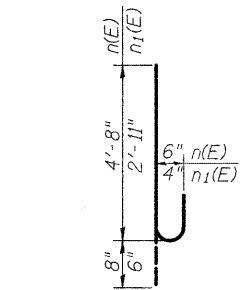
BAR c2(E)



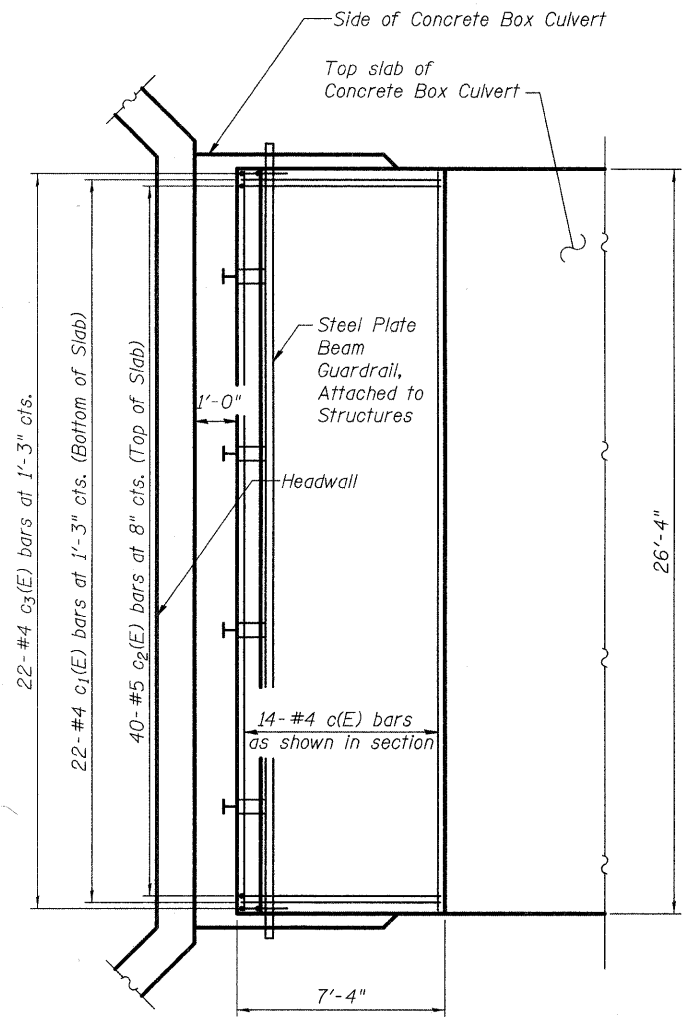
BAR c3(E)



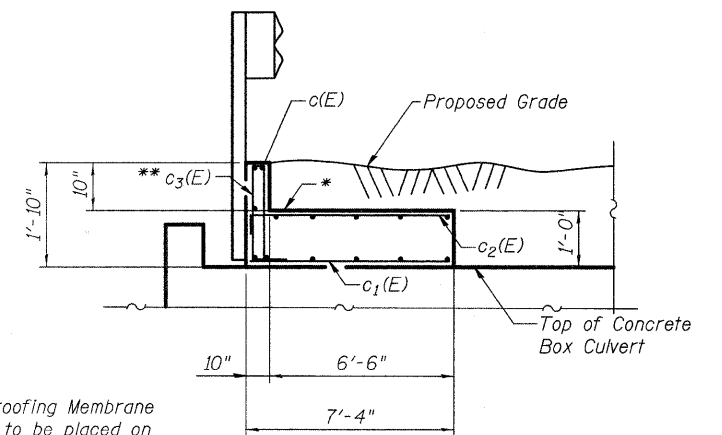
BAR d1(E)



BARS n(E) and n1(E)



MOMENT SLAB PLAN VIEW



SECTION C-C

* Waterproofing Membrane System to be placed on moment slab on all exposed faces. Waterproofing Membrane System not to be placed between moment slab and Concrete Box Culvert.
** Space to avoid conflict with Anchor Bolts For Guardrail.

Note: Guardrail to be Mounted on Moment Slab per Highway Standard 630.101 Case I.

Notes: Reinforcement bars, Concrete Structures and Concrete Box Culverts included in Bill of Material on sheet 2 of 5.

STATE OF ILLINOIS
DEPARTMENT OF TRANSPORTATION

CULVERT DETAILS
STRUCTURE NO. 022-6006

F.A.U. RTE. 2534	SECTION 02-00068-00-BR	COUNTY DuPAGE	TOTAL SHEETS 15	SHEET NO. 11
CONTRACT NO. 63561				

FILE NAME = S:\JUL\6200-6299\A6253\018\Wioros\Sheets\STR Plans\0226006-X-DETAILS-003.dgn

1170 SOUTH HOUBOLT ROAD
JOLIET, ILLINOIS 60431
(815) 744-4200

USER NAME = brianf
PLOT SCALE =
PLOT DATE = 2/8/2011

DESIGNED RRD
CHECKED AJS
DRAWN BJF
CHECKED RRD

REVISED -
REVISED -
REVISED -
REVISED -

SHEET NO. 3 OF 5 SHEETS

ILLINOIS FED. AID PROJECT

Testing Service Corporation

STRUCTURE BORING LOG

Page 1 of 2

Date Started 10/24/07

Date Completed 10/24/07

ROUTE FAU 2534 DESCRIPTION Joliet St. over Kress Creek, West Chicago

SECT. 02-00068-00-BR STRUCT. NO. 022-3099 (exist.) DRILLED BY TSC L-61,188

COUNTY DuPage LOCATION NW Corner of Culvert S. 15 SW 1/4, TWP. 39 N, RNG. 9 E

Boring No.	Station	Offset	Surface Elev.	DEPTH	BL	SO	Qu	W	Surface Water Elev.	Groundwater Elev.:	DEPTH	BL	SO	Qu	W
SB-1	20+58	26.00ft LT	711.71 ft	H	S	tsf	%		_____	_____	H	S	tsf	%	
FILL - Gravel with Sand 710.91															
Stiff brown and dark brown CLAY LOAM, trace gravel, very moist A-4															
Qp = 4.5 tsf															
708.71															
Stiff brown CLAY LOAM, trace gravel, moist A-6															
Qp = 2.25 tsf															
706.21															
Medium stiff to stiff brown SANDY LOAM, trace gravel, very moist A-2-4/A-4															
703.71															
Med. dense brown and gray SAND and GRAVEL, saturated A-1															
701.21															
Very stiff gray CLAY, moist A-6															
698.71															
Med. dense gray SAND and GRAVEL, saturated A-1-a															
699.71															
Med. dense gray SAND, little gravel, saturated A-1-b															
691.21															
Dense to med. dense gray fine SAND, trace silt, saturated A-3															
686.71															
Stiff to very stiff gray CLAY, trace gravel, moist A-6															
661.71															

SPT. (N) = Sum of last two blow values in sample. (Qu) B=Bulge S=Shear P=Penetration Test Stations, Depths, Offset, and Elevations are in Feet

Testing Service Corporation

STRUCTURE BORING LOG

Page 2 of 2

Date Started 10/24/07

Date Completed 10/24/07

STRUCTURE NO. 022-3099 (exist.)

STRUCTURE NO. 022-3099 (exist.)

ROUTE FAU 2534

ROUTE FAU 2534

SECTION 02-00068-00-BR

SECTION 02-00068-00-BR

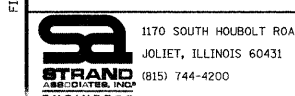
COUNTY DuPage

COUNTY DuPage

Boring No.	Station	Offset	Elevation	DEPTH	BL	SO	Qu	W	Elevation	DEPTH	BL	SO	Qu	W	
SB-1	20+58	26.00ft LT	661.71 ft	H	S	tsf	%		636.71 ft	H	S	tsf	%		
Stiff to very stiff gray CLAY, trace gravel, moist A-6															
659.71															
Med. dense gray silty fine SAND, wet A-1-b															
654.71															
Very dense gray fine to medium SAND, little gravel, occasional Cobbles, wet A-1															
649.71															
Med. dense gray SANDY LOAM, little gravel, moist A-2-4/A-4															
644.71															
Med. dense gray SAND, little gravel, saturated A-1-b															
641.71															
End of Boring at 70.0'															
Solid Auger to 23.0'															
Wash Drill below 23.0'															
CME-75 Truck Rig (#256)															
CME Automatic Hammer															

SPT. (N) = Sum of last two blow values in sample. (Qu) B=Bulge S=Shear P=Penetration Test Stations, Depths, Offset, and Elevations are in Feet

FILE NAME = S:\JUL\6210--6219\6253\BIS\Micros\Sheets\STR Plans\0226006-X-SBL-004.dgn



1170 SOUTH HOBOLT ROAD
JOLIET, ILLINOIS 60431
(815) 744-4200

USER NAME = brianf
DESIGNED RRD
CHECKED AJS
DRAWN BJF
PLOT DATE = 2/3/2011

REVISED -
REVISED -
REVISED -
REVISED -

STATE OF ILLINOIS
DEPARTMENT OF TRANSPORTATION

SOIL BORING LOGS
STRUCTURE NO. 022-6006

F.A.U. RTE. 2534	SECTION 02-00068-00-BR	COUNTY DuPAGE	TOTAL SHEETS 15	SHEET NO. 12
CONTRACT NO. 63561				

SHEET NO. 4 OF 8 SHEETS

ILLINOIS FED. AID PROJECT

Testing Service Corporation

STRUCTURE BORING LOG

Page 1 of 2

Date Started 10/25/07

Date Completed 10/25/07

ROUTE FAU 2534 DESCRIPTION Joliet St. over Kress Creek, West Chicago

SECT. 02-00068-00-BR STRUCT. NO. 022-3099 (exist.) DRILLED BY TSC L-61,188

COUNTY DuPage LOCATION SE Corner of Culvert S. 15 SW 1/4, TWP. 39 N, RNG. 9 E

Boring No.	Station	Offset	Surface Elev.	DEPTH	BLOW	Qu	W	Surface Water Elev.	Groundwater Elev.:	when drilling	at Completion	after	Hrs.	DEPTH	BLOW	Qu	W		
SB-2	19+38	23.00ft RT	711.25 ft																
FILL - Crushed Limestone, damp A-1					3 3 4		3.3	Qp = 3.75 tsf						4 6 9	B 2.6 15%		19.5		
FILL - Dark brown CLAY LOAM, some black clay, very moist A-4				707.25		2 2 2	P 0.25	3.3 18.4	Qp = 4.5 tsf						8 8 10	B 3.2 15%		14.6	
Med. dense reddish-brown SAND and GRAVEL, trace clay, very moist A-1				705.75		8 6 8		12.0											
Med. dense gray SAND and GRAVEL, saturated A-1-a				703.25		5 6 8		10.1	Very stiff gray CLAY LOAM, trace gravel, moist A-6						5 9 11	B 2.7 15%		11.8	
Med. dense gray sandy SILT, wet A-4				699.25		5 5 6		14.9 20.7											
Med. dense gray SAND and GRAVEL, saturated A-1-a				698.25		5 10 14		12.7	Very stiff gray CLAY, trace gravel, moist A-6						5 8 9	B 2.3 15%		16.6	
Med. dense gray SAND and GRAVEL, saturated A-1-a				687.25		11 11 16		11.0											
Very stiff gray CLAY, moist A-6				686.25		7 10 12	P 2.25	7.5 14.6							16 9 14	B 2.4 15%		20.4	
Dense gray silty fine SAND, saturated A-1-b				687.25		3 6 10		10.3											
Dense gray silty fine SAND, saturated A-1-b				686.25		7 10 12	P 2.25	7.5 14.6							12 16 24			16.7	

SPT. (N) = Sum of last two blow values in sample. (Qu) B=Bulge S=Shear P=Penetration Test Stations, Depths, Offset, and Elevations are in Feet

Testing Service Corporation

STRUCTURE BORING LOG

Page 2 of 2

Date Started 10/25/07

Date Completed 10/25/07

STRUCTURE NO. 022-3099 (exist.)

STRUCTURE NO. 022-3099 (exist.)

ROUTE FAU 2534

ROUTE FAU 2534

SECTION 02-00068-00-BR

SECTION 02-00068-00-BR

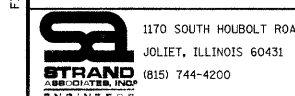
COUNTY DuPage

COUNTY DuPage

Boring No.	Station	Offset	Elevation	DEPTH	BLOW	Qu	W	Elevation
SB-2	19+38	23.00ft RT	661.25 ft					636.25 ft
Dense gray silty fine SAND, saturated A-1-b								
Med. dense gray sandy SILT, trace gravel, wet A-4					7 14 9		19.7	
(sample pound on large gravel)								
Med. dense gray fine to medium SAND, trace silt, saturated A-1-b					24 6 8		15.7	
(sample pound on large gravel)								
Very dense to dense gray SANDY LOAM, little gravel, moist A-2-4/A-4					23 24 26	S 2.8 8%	7.8	
Med. dense gray fine to medium SAND, trace silt, saturated A-1-b					14 16 18	P 4.5+	7.0	
End of Boring at 70.0'								
Solid Auger to 23.0'								
Wash Drill below 23.0'								
CME-75 Truck Rig (#256)								
CME Automatic Hammer								

SPT. (N) = Sum of last two blow values in sample. (Qu) B=Bulge S=Shear P=Penetration Test Stations, Depths, Offset, and Elevations are in Feet

FILE NAME = S:\JUL_6200-629\02253\016\Micros\Sheets\STR Plans\0226006-X-SBL-005.dgn



1170 SOUTH HARBOLT ROAD
JOLIET, ILLINOIS 60431
(815) 744-4200

USER NAME = brienf
DESIGNED RRD
CHECKED AJS
DRAWN BJF
CHECKED RRD

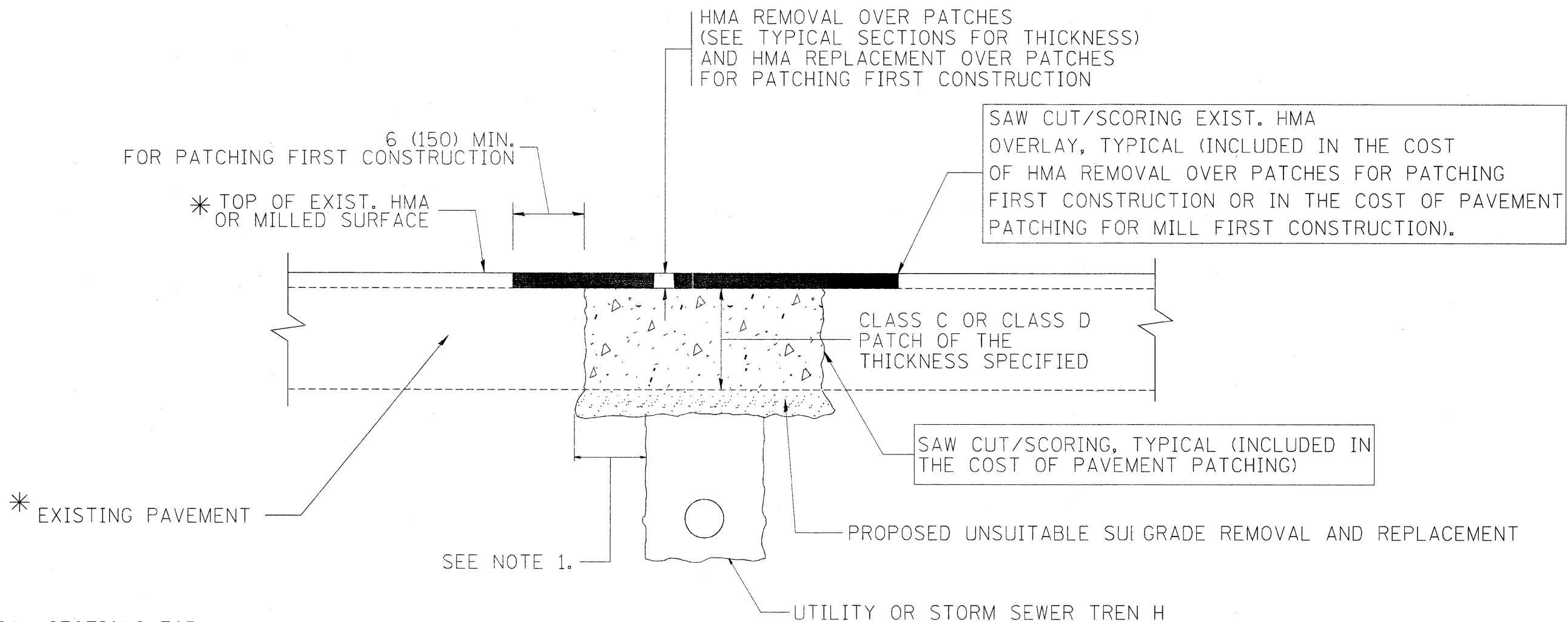
REVISED -
REVISED -
REVISED -
REVISED -

STATE OF ILLINOIS
DEPARTMENT OF TRANSPORTATION

SOIL BORING LOGS
STRUCTURE NO. 022-6006

SHEET NO. 5 OF 5 SHEETS

F.A.U. RTE.	SECTION	COUNTY	TOTAL SHEETS	SHEET NO.
2534	02-00068-00-BR	DuPAGE	15	13
CONTRACT NO. 63561			ILLINOIS FED. AID PROJECT	



* SEE TYPICAL SECTIONS FOR THICKNESS AND MATERIALS

NOTES:

1. THE WIDTH OF THE FULL DEPTH PATCH OVER A TRENCH SHALL BE 12 (300) WIDER ON EACH SIDE OF THE TRENCH.
2. FOR METHOD OF MEASUREMENT AND BASIS OF PAYMENT, SEE RECURRING SPECIAL PROVISION "PATCHING WITH HOT-MIX ASPHALT OVERLAY REMOVAL".

SEQUENCE OF CONSTRUCTION (PATCHING FIRST)

1. REMOVE THE EXISTING HMA MATERIAL OVER THE AREA TO BE PATCHED.
2. REMOVE AND REPLACE WITH CLASS C OR D PATCH.
3. REPLACE HMA MATERIAL OVER THE AREA TO BE PATCHED.

SEQUENCE OF CONSTRUCTION (MILLING FIRST)

1. MILL HMA FIRST IF THERE IS AT LEAST 4 1/2 INCHES OR MORE (= HMA MATERIAL ON TOP OF THE EXISTING PAVEMENT) OR IF THE PAVEMENT IS FULL DEPTH HMA. A MINIMUM OF 2 INCHES OF HMA MATERIAL SHALL BE IN PLACE AFTER MILLING.
2. REMOVE AND REPLACE WITH FULL DEPTH CLASS D PATCHES TO TOP OF MILLED SURFACE.

ALL DIMENSIONS ARE IN INCHES (MILLIMETERS) UNLESS OTHERWISE SHOWN.

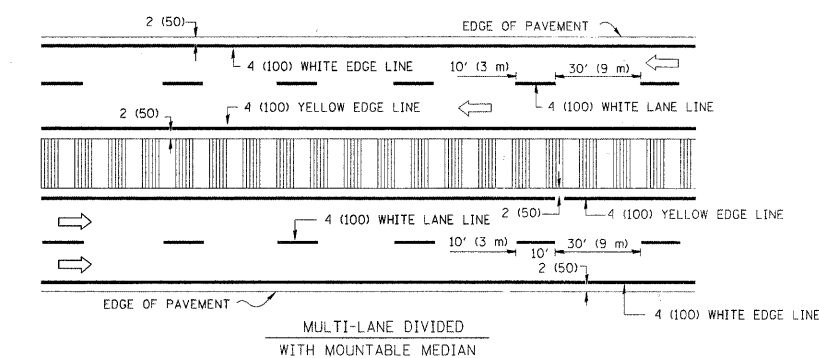
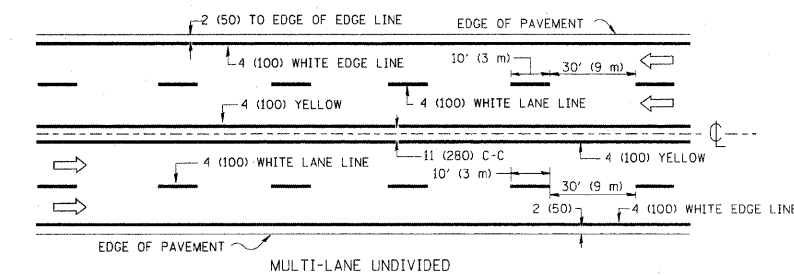
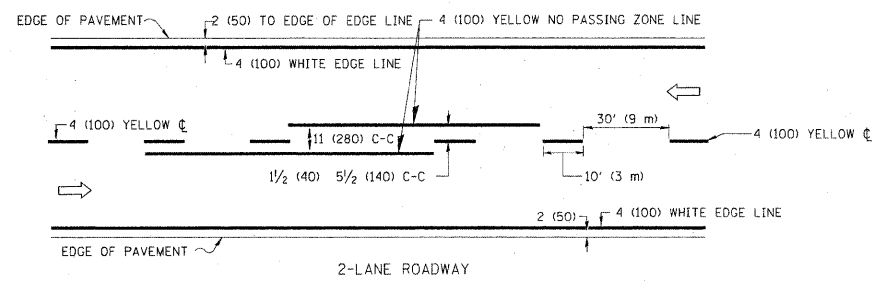
FILE NAME = c:\projects\diststd22x34\bd22.dgn	USER NAME = bauerdl	DESIGNED - R. SHAH	REVISED - A. ABBAS 04-27-98
		DRAWN -	REVISED - R. BORO 01-01-07
	PLOT SCALE = 50.000 / IN.	CHECKED -	REVISED - R. BORO 09-04-07
	PLOT DATE = 10/27/2008	DATE - 10-25-94	REVISED - K. ENG 10-27-08

**STATE OF ILLINOIS
DEPARTMENT OF TRANSPORTATION**

**PAVEMENT PATCHING FOR
HMA SURFACED PAVEMENT**

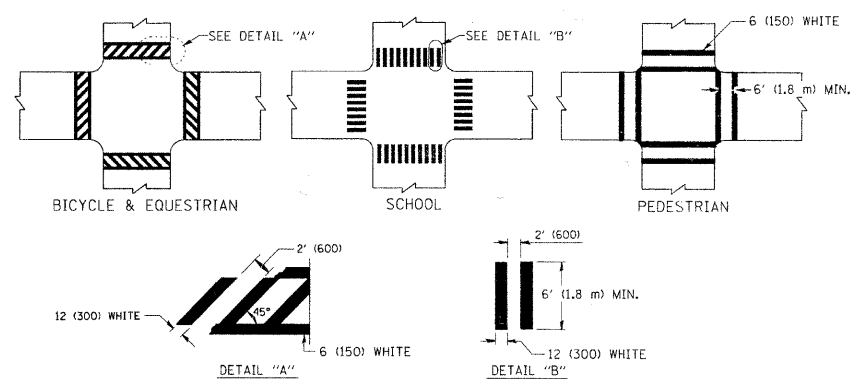
SCALE: NONE SHEET NO. 1 OF 1 SHEETS STA. TO STA.

F.A. RTE.	SECTION	COUNTY	TOTAL SHEETS	SHEET NO.
				14
BD400-04 (BD-22)			CONTRACT NO. 0350	
FED. ROAD DIST. NO. 1 ILLINOIS FED. AID PROJECT				

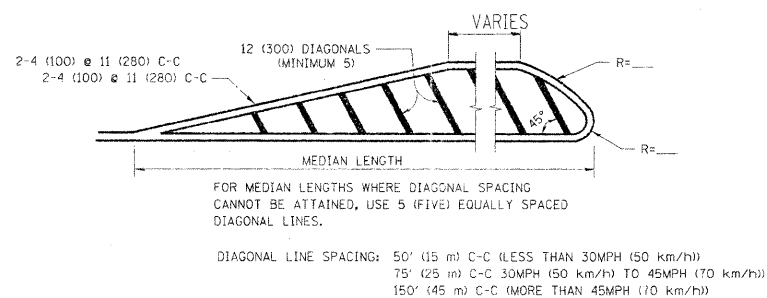
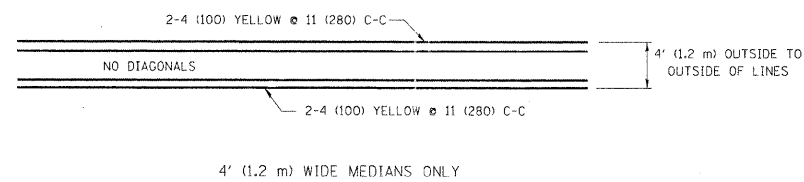


NOTE: MEDIANS WITH BARRIER CURB DO NOT REQUIRE AN EDGE LINE

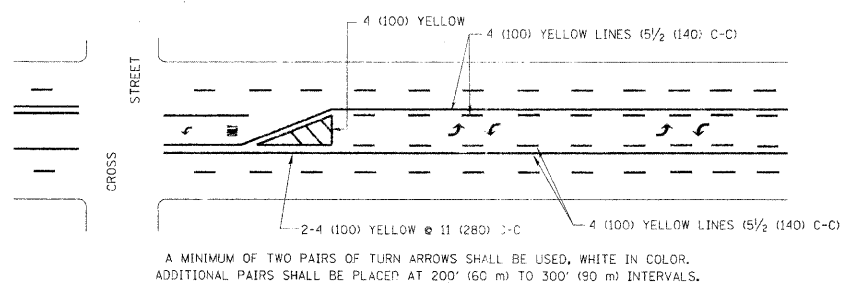
TYPICAL LANE AND EDGE LINE MARKING



TYPICAL CROSSWALK MARKING

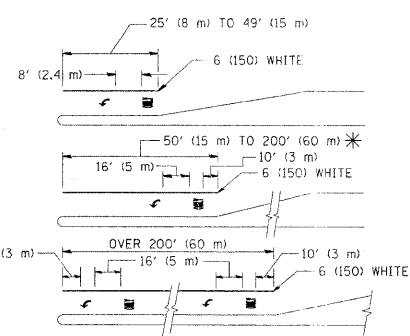


MEDIANS OVER 4' (1.2 m) WIDE



MEDIAN WITH TWO-WAY LEFT TURN LANE

TYPICAL PAINTED MEDIAN MARKING

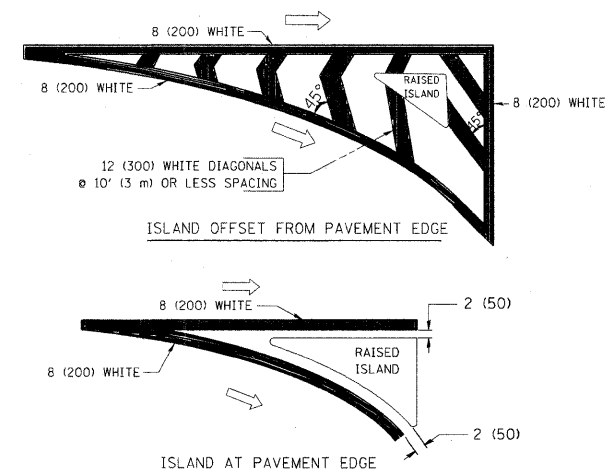


FULL SIZE LETTERS 8' (2.4 m) AND ARROWS SHALL BE USED.
AREA = 15.6 SQ. FT. (1.5 m²) ONLY AREA = 20.8 SQ. FT. (1.9 m²)

* TURN LANES IN EXCESS OF 400' (120 m) IN LENGTH MAY HAVE AN ADDITIONAL SET OF ARROW - "ONLY" INSTALLED MIDWAY BETWEEN THE OTHER TWO SETS OF ARROW - "ONLY".

TYPICAL LEFT (OR-RIGHT) TURN LANE

TYPICAL TURN LANE MARKING



TYPICAL ISLAND MARKING

TYPE OF MARKING	WIDTH OF LINE	PATTERN	COLOR	SPACING / REMARKS
CENTERLINE ON 2 LANE PAVEMENT	4 (100)	SKIP-DASH	YELLOW	10' (3 m) LINE WITH 30' (9 m) SPACE
CENTERLINE ON MULTI-LANE UNDIVIDED PAVEMENT	2 @ 4 (100)	SOLID	YELLOW	11 (280) C-C
NO PASSING ZONE LINES: FOR ONE DIRECTION FOR BOTH DIRECTIONS	4 (100) 2 @ 4 (100)	SOLID SOLID	YELLOW YELLOW	5/2 (140) C-C FROM SKIP-DASH CENTERLINE 11 (280) C-C OMIT SKIP-DASH CENTERLINE BETWEEN
LANE LINES	4 (100) 5 (125) ON FREEWAYS	SKIP-DASH SKIP-DASH	WHITE WHITE	10' (3 m) LINE WITH 30' (9 m) SPACE
DOTTED LINES (EXTENSIONS OF CENTER, LANE OR TURN LANE MARKINGS)	SAME AS LINE BEING EXTENDED	SKIP-DASH	SAME AS LINE BEING EXTENDED	2' (600) LINE WITH 6' (1.8 m) SPACE
EDGE LINES	4 (100)	SOLID	YELLOW-LEFT WHITE-RIGHT	OUTLINE MOUNTABLE MEDIANS IN YELLOW; EDGE LINES ARE NOT USED NEXT TO BARRIER CURB
TURN LANE MARKINGS	6 (150) LINE; FULL SIZE LETTERS & SYMBOLS (8' (2.4m))	SOLID	WHITE	SEE TYPICAL TURN LANE MARKING DETAIL
TWO WAY LEFT TURN MARKING	2 @ 4 (100) EACH DIRECTION 8' (2.4m) LEFT ARROW	SKIP-DASH AND SOLID IN PAIRS	YELLOW WHITE	10' (3 m) LINE WITH 30' (9 m) SPACE FOR SKIP-DASH; 5/2 (140) C-C BETWEEN SOLID LINE AND SKIP-DASH LINE SEE TYPICAL TWO-WAY LEFT TURN MARKING DETAIL
CROSSWALK LINES (PEDESTRIAN) A. DIAGONALS (BIKE & EQUESTRIAN) B. LONGITUDINAL BARS (SCHOOL)	6 (150) 12 (300) @ 45° 12 (300) @ 90°	SOLID SOLID SOLID	WHITE WHITE WHITE	NOT LESS THAN 6' (1.8 m) APART 2' (600) APART 2' (600) APART SEE TYPICAL CROSSWALK MARKING DETAILS.
STOP LINES	24 (600)	SOLID	WHITE	PLACE 4' (1.2 m) IN ADVANCE OF AND PARALLEL TO CROSSWALK, IF PRESENT. OTHERWISE, PLACE AT DESIRED STOPPING POINT, PARALLEL TO CROSSROAD CENTERLINE, WHERE POSSIBLE
PAINTED MEDIANS	2 @ 4 (100) WITH 12 (300) DIAGONALS @ 45°	SOLID	YELLOW: TWO WAY TRAFFIC WHITE: ONE WAY TRAFFIC	11 (280) C-C FOR THE DOUBLE LINE SEE TYPICAL PAINTED MEDIAN MARKING.
GORE MARKING AND CHANNELIZING LINES	8 (200) WITH 12 (300) DIAGONALS @ 45°	SOLID	WHITE	DIAGONALS: 15' (4.5 m) C-C (LESS THAN 30MPH (50 km/h)) 20' (6 m) C-C 30MPH (50 km/h) TO 45MPH (70 km/h) 30' (9 m) C-C (OVER 45MPH (70 km/h))
RAILROAD CROSSING	24 (600) TRANSVERSE LINES; "RR" IS 6' (1.8 m) LETTERS; 16 (400) LINE FOR "X"	SOLID	WHITE	SEE STATE STANDARD 780001 AREA OF: "R"=3.6 SQ. FT. (0.33 m ²) EACH "X"=54.0 SQ. FT. (5.0 m ²)
SHOULDER DIAGONALS	12 (300) @ 45°	SOLID	WHITE - RIGHT YELLOW - LEFT	50' (15 m) C-C (LESS THAN 30MPH (50 km/h)) 75' (25 m) C-C (30 MPH (50 km/h) TO 45MPH (70 km/h)) 150' (45 m) C-C (OVER 45MPH (70 km/h))

FOR FURTHER DETAILS ON PAVEMENT MARKING REFER TO STANDARD SPECIFICATIONS FOR ROAD AND BRIDGE CONSTRUCTION AND STATE STANDARD 780001.

All dimensions are in inches (millimeters) unless otherwise shown.

FILE NAME =	USER NAME = drivakosgn	DESIGNED - EVERS	REVISED - T. RAMMACHER 10-27-94
01\pw_work\pwwidat\drivakosgn\d0108315\to3.dgn		DRAWN -	REVISED - C. JUCCIUS 09-09-09
		CHECKED -	REVISED -
PLOT SCALE = 50,000 1/16" IN.		DATE = 03-12-99	REVISED -
PLOT DATE = 5/9/2001			

STATE OF ILLINOIS
DEPARTMENT OF TRANSPORTATION

DISTRICT ONE
TYPICAL PAVEMENT MARKINGS

F.A. RTE.	SECTION	COUNTY	TOTAL SHEETS	SHEET NO.
				15
TC-13			CONTRACT NO. 03501	

SCALE: NONE SHEET NO. 1 OF 1 SHEETS STA. TO STA. *G STA. FED. ROAD DIST. NO. 1 ILLINOIS FED. AID PROJECT