

SUMMARY OF QUANTITIES

GREAT WESTERN TRAIL

CODE NO.	ITEM	UNIT	TOTAL QUANTITY	75% FED 25% LOCAL	75% FED 25% GCPF	75% FED 25% LOCAL	75% FED 25% LOCAL	75% FED 25% GCPF	75% FED 25% GCPF	75% FED 25% LOCAL	75% FED 25% LOCAL	
				BIKE PATH	BIKE PATH	BRIDGE, NEW CONSTRUCTION	BRIDGE, NEW CONSTRUCTION	BRIDGE, NEW CONSTRUCTION	BRIDGE, NEW CONSTRUCTION	RETAINING WALL	LANDSCAPING	LIGHTING
				0028	0028	SN 022-3120	SN 022-3121	SN 022-3121	SN 022-3122	SN 022-3123	0031	0021
20100110	TREE REMOVAL (6 TO 15 UNITS DIAMETER)	UNIT	426	284	142	0008	0008	0008	0008	0040	0031	0021
20100210	TREE REMOVAL (OVER 15 UNITS DIAMETER)	UNIT	203	135	68							
20100500	TREE REMOVAL, ACRES	ACRE	3.0	2.0	1.0							
20101100	TREE TRUNK PROTECTION	EACH	29	19	10							
20200100	EARTH EXCAVATION	CU YD	2,980	1,490	1,490							
20201200	REMOVAL AND DISPOSAL OF UNSUITABLE MATERIAL	CU YD	3,660	1,830	1,830							
20400100	BORROW EXCAVATION	CU YD	6,900	3450	3450							
20400800	FURNISHED EXCAVATION	CU YD	10,505	5,253	5,252							
20800150	TRENCH BACKFILL	CU YD	65	43	22							
21101615	TOPSOIL FURNISH AND PLACE, 4"	SQ YD	11,350		5,675						5,675	
25000200	SEEDING, CLASS 2	ACRE	3.0		1.0						2.0	
25000312	SEEDING, CLASS 4A	ACRE	2.5		0.83						1.67	
25000400	NITROGEN FERTILIZER NUTRIENT	POUND	270		90						180	
25000500	PHOSPHORUS FERTILIZER NUTRIENT	POUND	270		90						180	
25000600	POTASSIUM FERTILIZER NUTRIENT	POUND	270		90						180	
25100630	EROSION CONTROL BLANKET	SQ YD	13,750		4,583						9,167	
25100635	HEAVY DUTY EROSION CONTROL BLANKET	SQ YD	12,000		4,000						8,000	
25200100	SODDING	SQ YD	435		145						290	
25200200	SUPPLEMENTAL WATERING	UNIT	4.5		1.5						3	
28000250	TEMPORARY EROSION CONTROL SEEDING	POUND	800.0		266.7						533.3	
28000400	PERIMETER EROSION BARRIER	FOOT	7,611	5,100	2,511							
28000510	INLET FILTERS	EACH	17	11	6							
28100101	STONE RIPRAP, CLASS A1	SQ YD	163	109	54							
28200200	FILTER FABRIC	SQ YD	163	109	54							
31101400	SUBBASE GRANULAR MATERIAL, TYPE B 6"	SQ YD	1,906	1,277	629							
40200900	AGGREGATE SURFACE COURSE, TYPE B	CU YD	93	93								
40600200	BITUMINOUS MATERIALS, PRIME COAT	TON	3.8	1.9	1.9							
40600300	AGGREGATE (PRIME COAT)	TON	3.8	1.9	1.9							
40603310	HOT-MIX ASPHALT SURFACE COURSE, MIX "C", N50	TON	301	202	99							
42001300	PROTECTIVE COAT	SQ YD	250	167	83							
42001430	BRIDGE APPROACH PAVEMENT CONNECTOR (FLEXIBLE)	SQ YD	22		22							
42400200	PORTLAND CEMENT CONCRETE SIDEWALK 5 INCH	SQ FT	1591.0	1,061	530							
42400800	DETECTABLE WARNINGS	SQ FT	20.0	13.3	6.7							

* SPECIALTY ITEMS

FILE NAME = M:\756-204_Lombard - DWT Bridges Phase II\CADD Sheets\01756204-sh-500.dgn

Bollinger, Lach & Associates, Inc.
ITASCA, ILLINOIS

USER NAME = gonzalo	DESIGNED - BD	REVISED - 9-12-11
PLOT SCALE = 20.0000' / IN.	DRAWN - DC	REVISED -
PLOT DATE = 9/13/2011	CHECKED - BD	REVISED -
	DATE -	REVISED -

**STATE OF ILLINOIS
GREAT WESTERN TRAIL**

**GREAT WESTERN TRAIL BIKE PATH
SUMMARY OF QUANTITIES**

SCALE: NONE SHEET NO. SHEETS STA. TO STA.

F.A. RTE.	SECTION	COUNTY	TOTAL SHEETS	SHEET NO.
	06-00151-00-BR		201	3
CONTRACT NO. 63568			ILLINOIS FED. AID PROJECT	


SUMMARY OF QUANTITIES

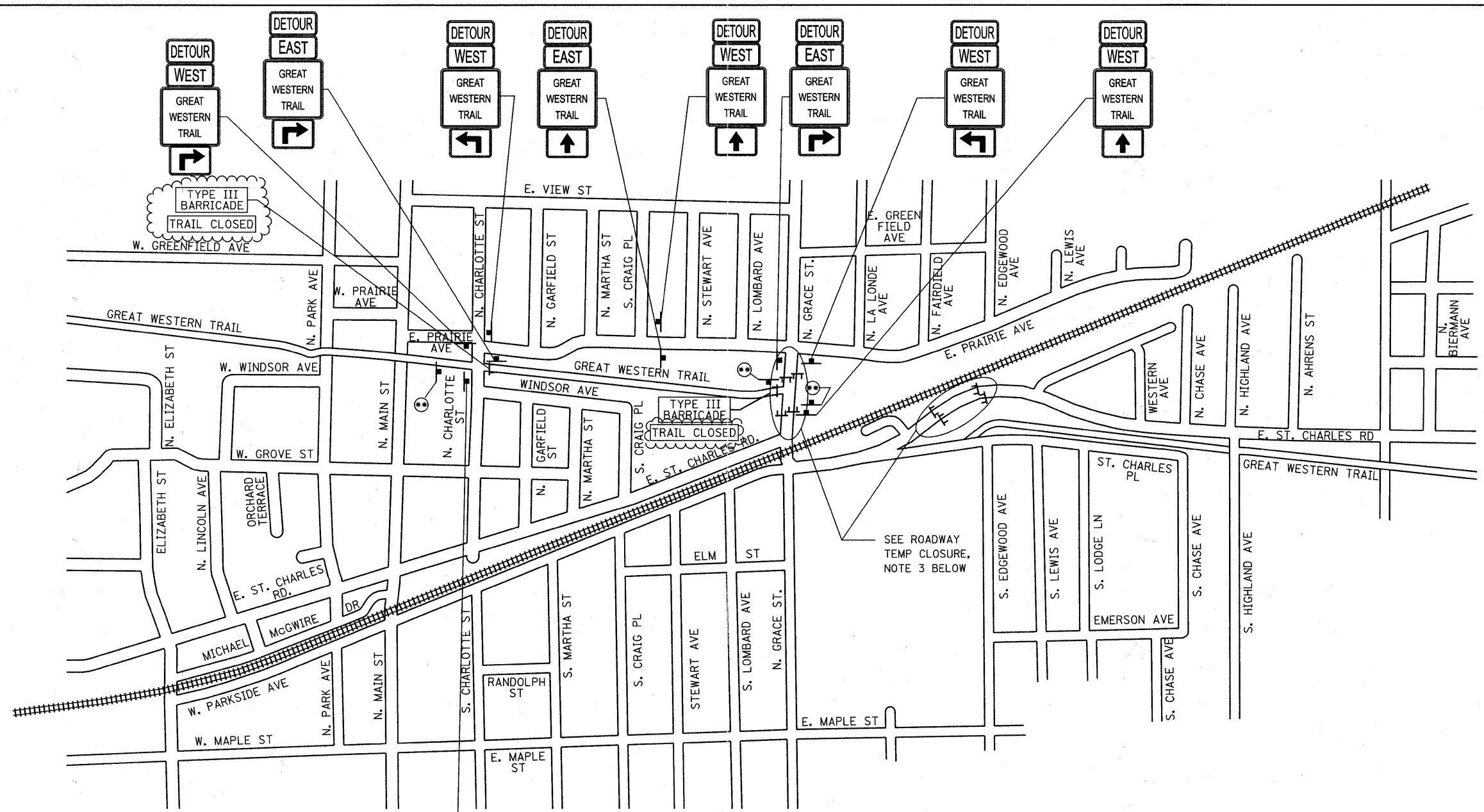
GREAT WESTERN TRAIL

CODE NO.	ITEM	UNIT	TOTAL QUANTITY	75% FED 25% LOCAL	75% FED 25% GCPF	75% FED 25% LOCAL	75% FED 25% LOCAL	75% FED 25% GCPF	75% FED 25% GCPF	75% FED 25% LOCAL	75% FED 25% LOCAL
				BIKE PATH	BIKE PATH	BRIDGE, NEW CONSTRUCTION SN 022-3120	BRIDGE, NEW CONSTRUCTION SN 022-3121	BRIDGE, NEW CONSTRUCTION SN 022-3121	BRIDGE, NEW CONSTRUCTION SN 022-3122	RETAINING WALL SN 022-3123	LANDSCAPING
44000100	PAVEMENT REMOVAL	SQ YD	377	0028 252.6	0028 124.4	0008	0008	0008	0008	0040	0031 0021
44000500	COMBINATION CURB AND GUTTER REMOVAL	FOOT	90	60	30						
44000600	SIDEWALK REMOVAL	SQ FT	780	520	260						
48101500	AGGREGATE SHOULDERS, TYPE B, 6"	SQ YD	660	400	260						
50157300	PROTECTIVE SHIELD	SQ YD	172						172		
50200100	STRUCTURE EXCAVATION	CU YD	3,470			510		754	1945	261	
50300225	CONCRETE STRUCTURES	CU YD	132.0			21.0	50.1		60.9		
50300255	CONCRETE SUPERSTRUCTURE	CU YD	304.7			59.3	88.3		157.1		
50300300	PROTECTIVE COAT	SQ YD	743			154	226		363		
50400745	FURNISHING AND ERECTING PRECAST PRESTRESSED CONCRETE BULB T-BEAMS, 72"	FOOT	415.5						415.5		
50401005	FURNISHING AND ERECTING PRECAST PRESTRESSED CONCRETE I-BEAMS, 48"	FOOT	782.0			389.0	393.0				
50800205	REINFORCEMENT BARS, EPOXY COATED	POUND	78,910			16,040	23,560		39,310		
50800515	BAR SPLICERS	EACH	76				34		42		
* 50901730	BRIDGE FENCE RAILING	FOOT	283.9						283.9		
* 50901750	PARAPET RAILING	FOOT	667.1			197	280.8		189.3		
51201610	FURNISHING STEEL PILES HP12X63	FOOT	1,400				462		938		
51202305	DRIVING PILES	FOOT	1,400				462		938		
51203610	TEST PILE STEEL HP12X63	EACH	4.0				2		2		
51204650	PILES SHOES	EACH	24				8		16		
51500100	NAME PLATES	EACH	6			2	2		2		
52000110	PREFORMED JOINT STRIP SEAL	FOOT	40.0						40.0		
52100010	ELASTOMERIC BEARING ASSEMBLY, TYPE I	EACH	3						3		
52100400	STEEL BEARING ASSEMBLY	EACH	3						3		
54213657	PRECAST REINFORCED CONCRETE FLARED END SECTIONS 12"	EACH	7	4	3						
550A0340	STORM SEWERS, CLASS A, TYPE 2 12"	FOOT	349	233	116						
55100500	STORM SEWER REMOVAL 12"	FOOT	33	24.6	8.4						
58700300	CONCRETE SEALER	SQ FT	580						580		
59100100	GEOCOMPOSITE WALL DRAIN	SQ YD	30				30				
60200305	CATCH BASINS, TYPE A, 4'-DIAMETER, TYPE 3 FRAME, AND GRATE	EACH	1	1							
60235700	INLETS, TYPE A, TYPE 3 FRAME AND GRATE	EACH	4	3	1						
60240220	INLETS, TYPE B, TYPE 3 FRAME AND GRATE	EACH	5	3	2						
60240301	INLETS, TYPE B, TYPE 8 GRATE	EACH	2	1	1						
60500050	REMOVING CATCH BASINS	EACH	1	1							

* SPECIALTY ITEMS

FILE NAME = W:\756-204_Lombard - CMT Bridges Phase II\CADD Sheets\01756204-ans-500.dgn

 Bollinger, Lach & Associates, Inc. <small>ITASCA, ILLINOIS</small>	USER NAME = gonzo	DESIGNED - BD	REVISED - 9-12-11	STATE OF ILLINOIS GREAT WESTERN TRAIL	GREAT WESTERN TRAIL BIKE PATH SUMMARY OF QUANTITIES				F.A. RTE.	SECTION	COUNTY	TOTAL SHEETS	SHEET NO.
	PLOT SCALE = 20.0000' / IN.	DRAWN - DC	REVISED -		SCALE: NONE	SHEET NO.	SHEETS	STA.	TO STA.	06-00151-00-BR	DUPAGE	201	4
PLOT DATE = 9/13/2011	CHECKED - BD	REVISED -						CONTRACT NO. 63568		ILLINOIS FED. AID PROJECT			
	DATE -	REVISED -											



ROADWAY TEMPORARY CLOSURE NOTES

1. THE TEMPORARY TRAFFIC CONTROL GENERALLY APPLIES TO MSE WALL CONSTRUCTION AND BRIDGE BEAM INSTALLATIONS BUT INCLUDES ALL WORK IN THE ROADWAY. THE WORK TRAFFIC CONTROL SHALL BE FOR DAYTIME OPERATIONS ONLY AND NOT BE LEFT INSTALLED OVERNIGHT.
2. CHANGEABLE MESSAGE SIGNS SHALL BE PLACED AT LEAST TWO WEEKS PRIOR TO CLOSING ST. CHARLES ROAD AND GRACE STREET FOR DAYTIME BRIDGE ERECTION WORK. THE VILLAGE OF LOMBARD (PHONE (630) 620-5740) SHALL BE NOTIFIED TWO DAYS PRIOR TO PLACEMENT OF THESE SIGNS. SIGNS SHALL BE INSTALLED PER THE SPECIFICATIONS AND DETAILS AND AS DIRECTED BY ENGINEER.
3. TYPE III BARRICADES SHALL BE INSTALLED FOR THE DAYTIME ROAD CLOSURES ON ST. CHARLES ROAD AND GRACE STREET AND ONLY AFTER THE CHANGEABLE MESSAGE SIGNS HAVE BEEN OPERATING FOR AT LEAST TWO WEEKS. BARRICADES SHALL BE INSTALLED PER THE PLANS AND AS DIRECTED BY ENGINEER.

GREAT WESTERN TRAIL TEMPORARY CLOSURE NOTES

THE CONTRACTOR SHALL NOTIFY THE ENGINEER 4 WEEKS PRIOR TO THE START OF WORK AT THE SITE AND SHALL INSTALL THE ADVANCE CLOSURE SIGNS AT GRACE STREET AND AT N. CHARLOTTE STREET. THE LOCATION OF THE MOUNTING OF SIGNS SHALL BE APPROVED BY THE ENGINEER.

WHEN SITE WORK BEGINS, A PANEL WITH THE WORD "CLOSED" SHALL BE PLACED OVER THE "WILL BE CLOSED" TEXT ON THE ADVANCE CLOSURE SIGN AND TYPE III BARRICADES SHALL BE PLACED AT THE TRAIL AT GRACE STREET.

THE "ADVANCE CLOSURE SIGNS" SHALL BE PAID FOR AS "TEMPORARY INFORMATION SIGNING"

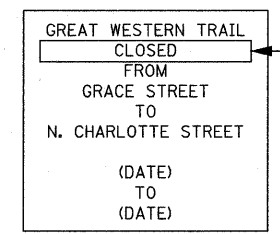
AT THE END OF EACH WORK DAY, THE TYPE III BARRICADES AT THE WORK ZONE SHALL BE PLACED ACROSS THE TRAIL AND THE BARRICADES AT THE TRAIL HEADS SHALL BE CHECKED FOR PROPER PLACEMENT ACROSS THE TRAIL.

THE COST OF INSTALLATION, MAINTENANCE, AND REMOVAL OF THE GREAT WESTERN TRAIL DETOUR SHALL BE INCLUDED IN THE COST OF TRAFFIC CONTROL AND PROTECTION (SPECIAL).

GREAT WESTERN TRAIL WILL BE CLOSED FROM GRACE STREET TO N. CHARLOTTE STREET (DATE) TO (DATE)

36" x 36" (9 SQ. FT.)

ADVANCE CLOSURE SIGN



36" x 36" (9 SQ. FT.)

TRAIL CLOSURE SIGN

NOTE: ADD 6" x 30" (1.25 SQ. FT.) PANEL WITH "CLOSED" TEXT OVER THE SECOND LINE OF ADVANCED CLOSURE SIGN

- NOTES:
1. USE BLACK LETTERING ON ORANGE BACKGROUND.
 2. SEE SPECIAL PROVISION FOR "TEMPORARY INFORMATION SIGNING"

SIGNAGE LEGEND

	M5-1L-2115		M4-8-2412		M3-1-2412		M3-3-2412		M3-2-2412		M3-4-2412		M4-6-2412
	M5-1R-2115		M3-1-2412		M3-3-2412		M3-2-2412		M3-4-2412		M4-6-2412		M4-6-2412
	M6-1R-2115		M3-1-2412		M3-3-2412		M3-2-2412		M3-4-2412		M4-6-2412		M4-6-2412
	M6-1L-2115		M3-1-2412		M3-3-2412		M3-2-2412		M3-4-2412		M4-6-2412		M4-6-2412
	M6-3-2115		M3-1-2412		M3-3-2412		M3-2-2412		M3-4-2412		M4-6-2412		M4-6-2412

Bollinger, Lach & Associates, Inc.
ITASCA, ILLINOIS

USER NAME = gonzalo	DESIGNED - BD	REVISED - 9-12-11
PLOT SCALE = 50.0000' / IN.	DRAWN - DC	REVISED -
PLOT DATE = 9/13/2011	CHECKED - BD	REVISED -
	DATE -	REVISED -

**STATE OF ILLINOIS
GREAT WESTERN TRAIL**

**GREAT WESTERN TRAIL BIKE PATH
DETOUR PLAN**

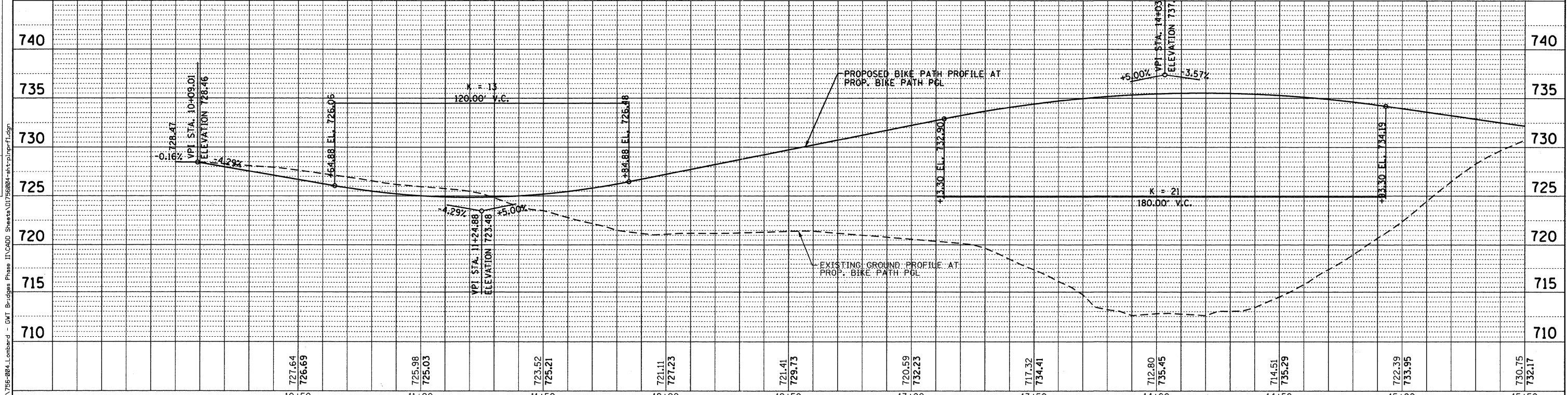
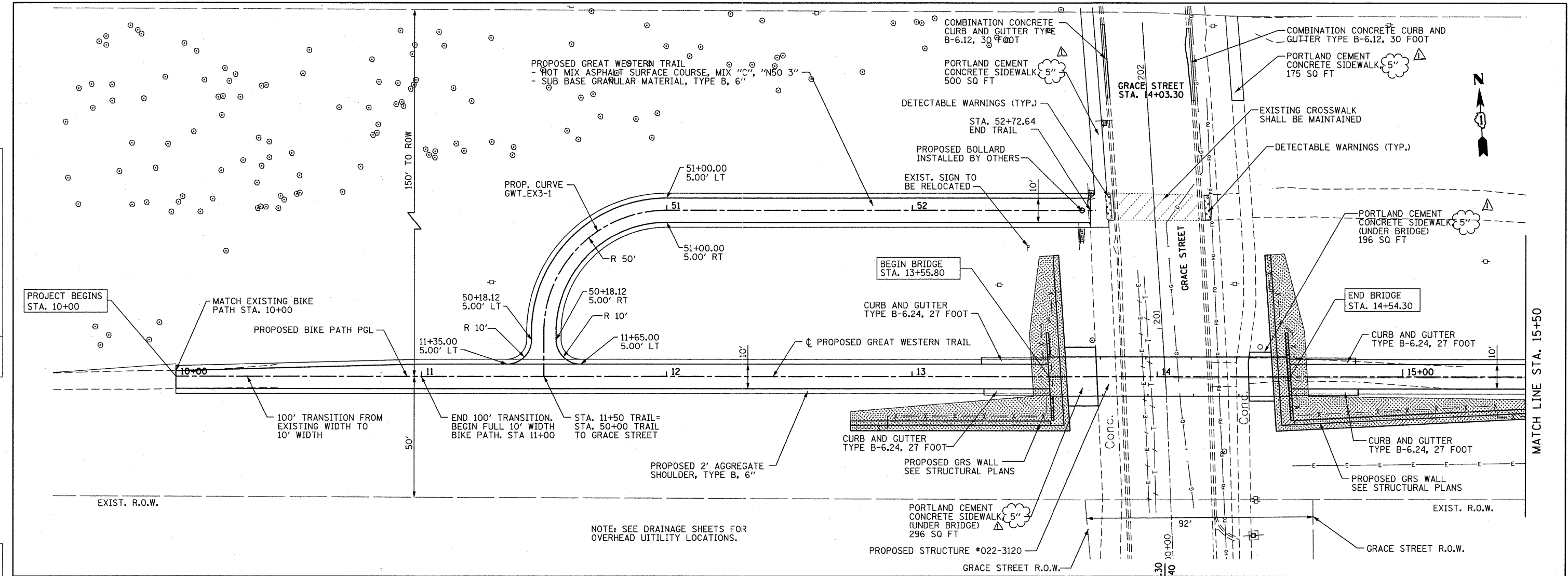
SCALE: NONE SHEET NO. SHEETS STA. TO STA.

F.A. RTE.	SECTION	COUNTY	TOTAL SHEETS	SHEET NO.
	06-00151-00-BR	DUPAGE	201	13
CONTRACT NO. 63568				
ILLINOIS FED. AID PROJECT				

FILE NAME = M:\756-904-Lombard - GWT Bridges Phase II\CADD Sheets\01756904-ahf-detour.dgn

DATE	
BY	
PLAN	
SURVEYED	
ALIGNED	
CHECKED	
RT. OF WAY	
CHECKED	
NO. OF WAY	
CHECKED	
NO.	
DATE	
BY	
PROFILE	
SURVEYED	
GRADES	
CHECKED	
NO.	
DATE	
BY	

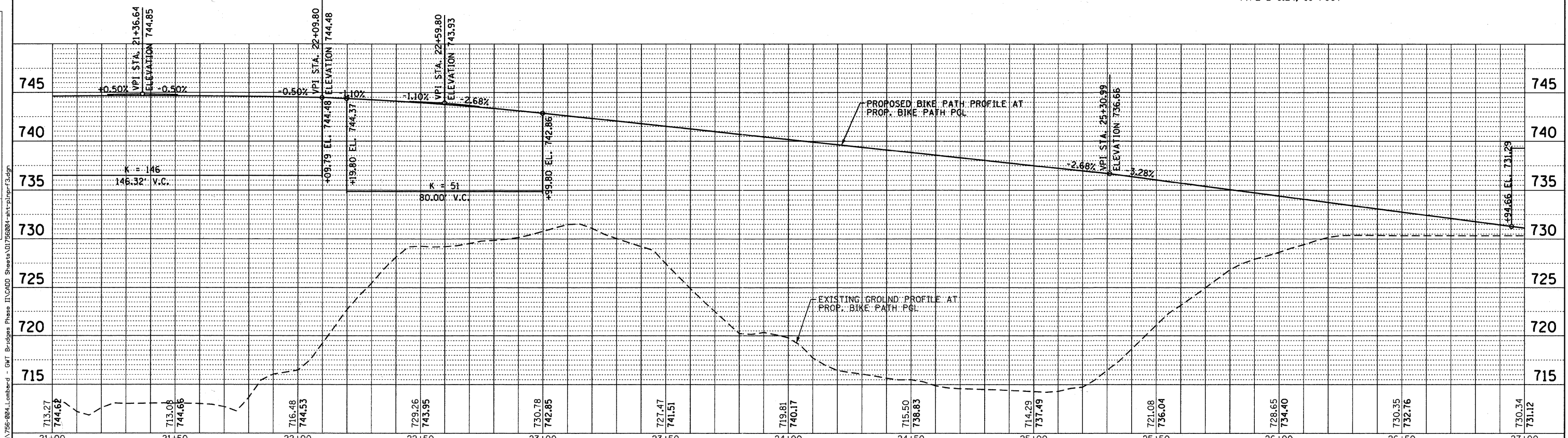
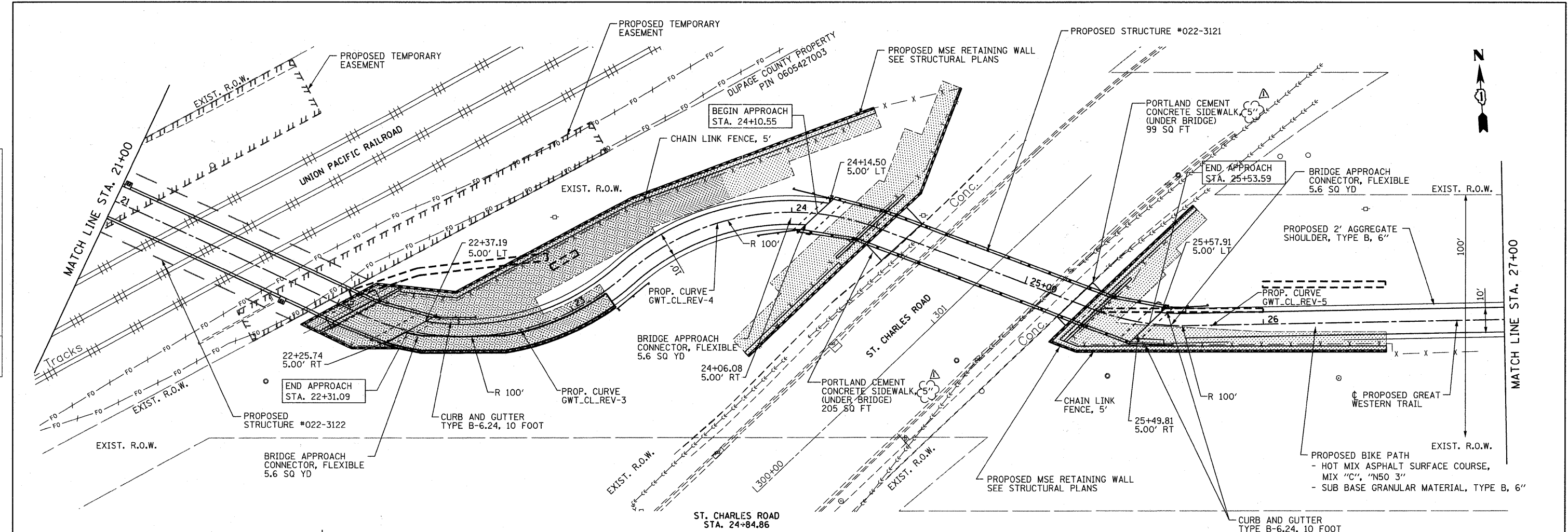
DATE	
BY	
PROFILE	
SURVEYED	
GRADES	
CHECKED	
NO.	
DATE	
BY	



	USER NAME = gonzalo	DESIGNED - BD	REVISED - 9-12-11	STATE OF ILLINOIS GREAT WESTERN TRAIL	PLAN AND PROFILE HORIZ. 1"=20' SCALE: VERT. 1"=5' SHEET NO.	SHEETS STA. 10+00 TO STA. 15+50	F.A. RTE.	SECTION	COUNTY	TOTAL SHEETS	SHEET NO.
	PLOT SCALE = 20.00' / IN. PLOT DATE = 9/13/2011	DRAWN - DC CHECKED - BD DATE - 10/22/2010	REVISED - REVISED - REVISED -				06-00151-00-BR DUPAGE CONTRACT NO. 63568	ILLINOIS FED. AID PROJECT	201 22	22	

PLAN	DATE
SURVEYED	
ALIGNED	
CHECKED	
PT. OF WAY CHECKED	
NO. _____	
FILE NAME	

PROFILE	DATE
SURVEYED	
GRADES CHECKED	
NO. _____	
FILE NAME	



FILE NAME = M:\756-804_Lonboard - GWT Bridges Phase II\CADD Sheets\DI756004-ant-rp-r3.dgn

Bollinger, Lach & Associates, Inc.
ITASCA, ILLINOIS

USER NAME = gonzeo	DESIGNED - BD	REVISED - 9-12-11
PLOT SCALE = 20.00' / IN.	DRAWN - DC	REVISED -
PLOT DATE = 9/13/2011	CHECKED - BD	REVISED -
	DATE - 10/22/2010	REVISED -

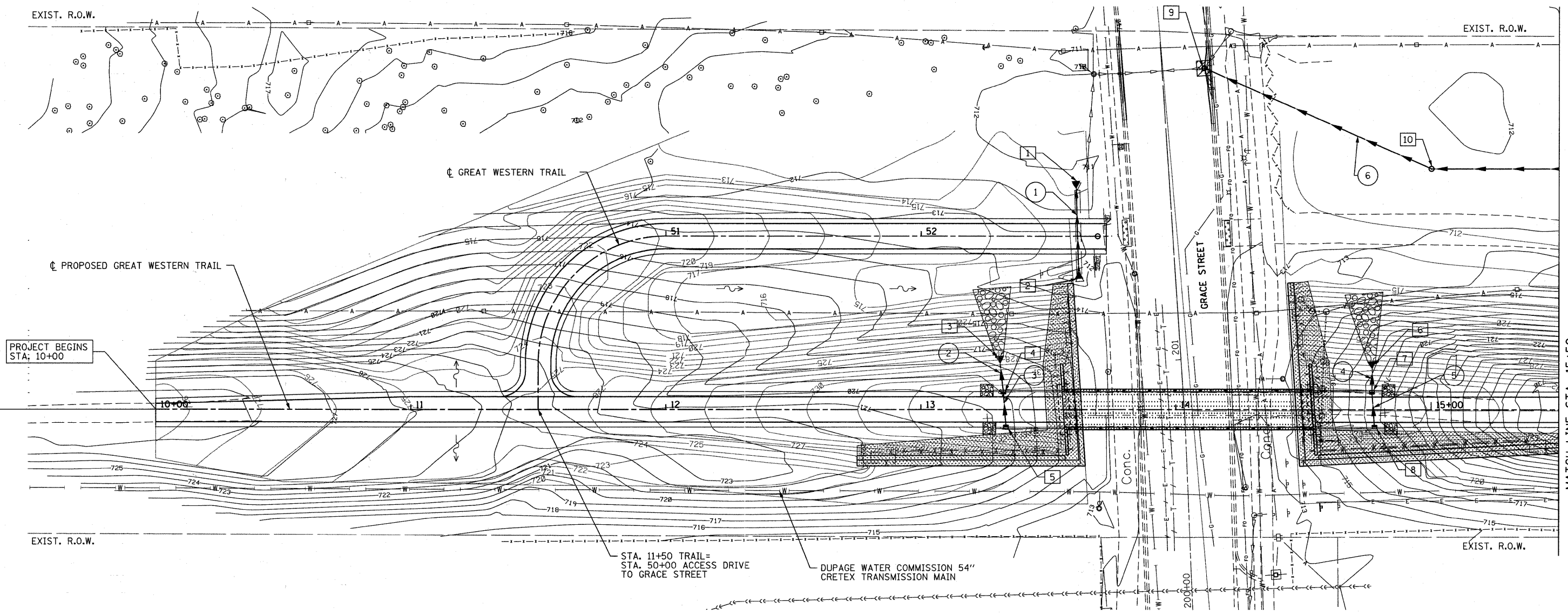
**STATE OF ILLINOIS
GREAT WESTERN TRAIL**

PLAN AND PROFILE	
HORIZ. 1"=20'	SHEETS
SCALE: VERT. 1"=5'	STA. 21+00 TO STA. 27+00

F.A. RTE.	SECTION	COUNTY	TOTAL SHEETS	SHEET NO.
	06-00151-00-BR	DUPAGE	201	24
FED. ROAD DIST. NO. 1 ILLINOIS FED. AID PROJECT			CONTRACT NO. 63568	



GRACE STREET
STA. 14+03.30



PROJECT BEGINS
STA. 10+00

MATCH LINE STA. 15+50

- | | | |
|--|---|---|
| <p>1 STA. 13+61.00, 90.07' LT
PRC FLAR END SEC, 12"
S INV=711.10</p> <p>2 STA. 13+62.36, 49.85' LT
PRC FLAR END SEC, 12"
N INV=711.40</p> <p>3 STA. 13+30.96, 19.55' LT
PRC FLAR END SEC, 12"
S INV=729.39</p> <p>4 STA. 13+32.29, 6.87' LT
INLET TB, T3 F&G
RIM ELEV=733.70
N INV=729.57
S INV=729.57</p> <p>5 STA. 13+33.30, 6.87 RT
INLET TA, T3 F&G
RIM ELEV=733.70
N INV=729.70</p> | <p>6 STA. 14+76.77, 17.54' LT
PRC FLAR END SEC, 12"
S INV=730.30</p> <p>7 STA. 14+76.80, 6.87' LT
INLET TB, T3 F&G
RIM ELEV=734.59
N INV=730.46
S INV=730.46</p> <p>8 STA. 14+77.81, 6.88' RT
INLET TA, T3 F&G
RIM ELEV=734.59
N INV=730.59</p> <p>9 STA. 14+10.95, 134.90' LT
CB TA, T3 F&G
RIM ELEV=712.00
SE INV=708.00</p> <p>10 STA. 15+00.00, 95.00' LT
INLET TB, T8 F&G
RIM ELEV=711.50
NW INV=708.50
E INV=708.50</p> | <p>1 STORM SEWERS CLASS A,
TYPE 2 - 12" = 30 FT @1%</p> <p>2 STORM SEWERS CLASS A,
TYPE 2 - 12" = 12 FT @1%</p> <p>3 STORM SEWERS CLASS A,
TYPE 2 - 12" = 13 FT @1%</p> <p>4 STORM SEWERS CLASS A,
TYPE 2 - 12" = 10 FT @1%</p> <p>5 STORM SEWERS CLASS A,
TYPE 2 - 12" = 13 FT @1%</p> <p>6 STORM SEWERS CLASS A,
TYPE 2 - 12" = 98 FT @0.5%</p> |
|--|---|---|

STA. 11+50 TRAIL=
STA. 50+00 ACCESS DRIVE
TO GRACE STREET

DUPAGE WATER COMMISSION 54"
CRETEX TRANSMISSION MAIN

FILE NAME = M:\756-004_Lombard - DWG Brdgas Phase II\CADD Sheets\0756004-ant-drain\ldgn

Bollinger, Lach & Associates, Inc.
ITASCA, ILLINOIS

USER NAME = gonzalo	DESIGNED - BD	REVISED - 9-12-11
PLOT SCALE = 20.00' / IN.	DRAWN - DC	REVISED -
PLOT DATE = 9/13/2011	CHECKED - BD	REVISED -
	DATE -	REVISED -

**STATE OF ILLINOIS
GREAT WESTERN TRAIL**

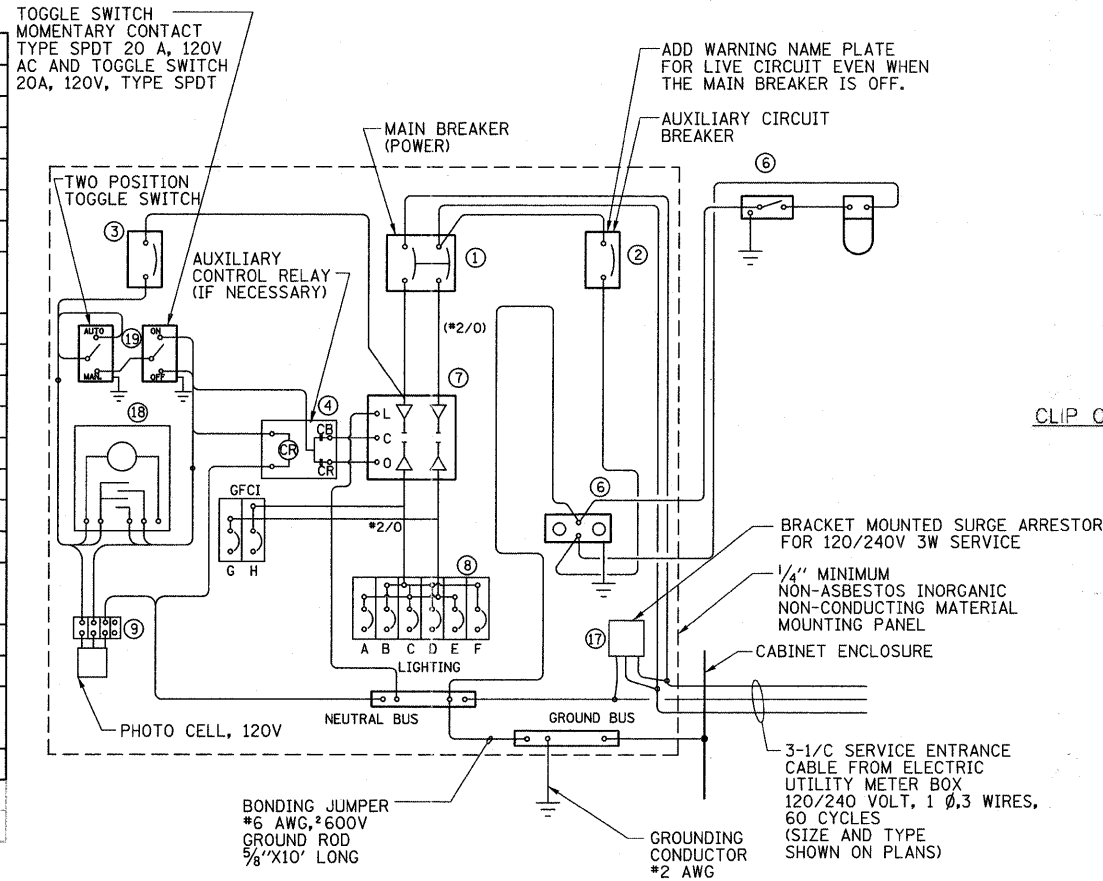
DRAINAGE, GRADING AND UTILITIES

SCALE: 1"=20' SHEET NO. SHEETS STA. 10+00 TO STA. 15+50

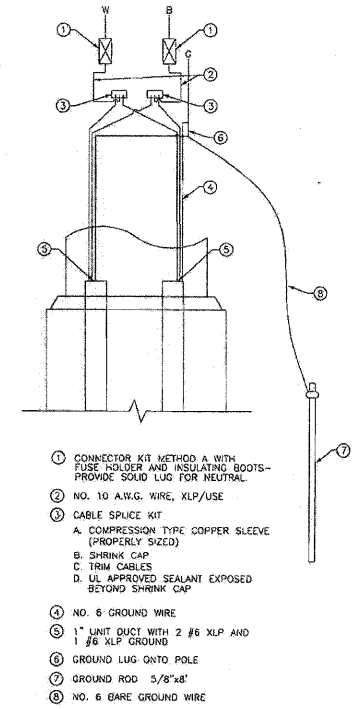
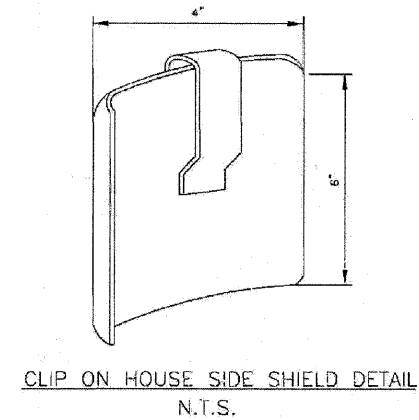
F.A. RTE.	SECTION	COUNTY	TOTAL SHEETS	SHEET NO.
	06-00151-00-BR	DUPAGE	201	38
CONTRACT NO. 63568				
ILLINOIS FED. AID PROJECT				

LIGHTING CONTROLLER COMPONENT SCHEDULE (2X)	
ITEM	SPECIFICATION OR EQUAL
1 MAIN CIRCUIT BREAKER	200 AMPERE, 2 POLE, 240 VOLT RATING
2 LAMPHOLDER CIRCUIT BREAKER	15 AMPERE, 1 POLE, 120 VOLT RATING
3 CONTROL SWITCH CIRCUIT BREAKER	15 AMPERE, 1 POLE, 120 VOLT RATING
4 AUXILIARY RELAY	120 VOLT SPST 60 HZ COIL
5	
6 LAMPHOLDER AND OUTLET	120 VOLT SWITCHED LAMPHOLDER AND 15 AMP GFI DUPLEX RECEPTACLE
7 REMOTE CONTROL SWITCH	200 AMPERE, 2 POLE, 240 VOLT RATING
8 BRANCH LINE CIRCUIT BREAKERS	CIRCUITS: 30 AMP, 1 POLE, 120 VOLT RATING
9 FOUR POINT TERMINAL BLOCK	600 VOLT
10 SERVICE CABLES	3- 600 VOLT (XLP-TYPE USE) NO. 3/0
11 LAMPHOLDER WIRE	2- 600 VOLT XLP NO. 10
12 CONTROL WIRE	2- 600 VOLT XLP NO. 10
13 BRANCH LINE CABLES	SEE PLANS FOR SIZE
14 PHOTOELECTRIC CONTROL WIRE	2- 600 VOLT XLP NO. 10
15 LIGHTING POLE WIRE	2- 600 VOLT THHN NO. 10 CABLES WITH POLE GROUND AND FUSING
16	
17 LIGHTING ARRESTOR	JOSLYN Z2-650-0 WITH MOUNTING BRACKET OR EQUAL
18 TIME CLOCK	SOLID STATE, ASTRONOMICAL BATTERY OPERATED CARRYOVER, 120V, 10 AMPS PER POLE
19 MAN-AUTO-OFF CONTROL SWITCH	15 AMPERE, 3 POLE, 120 VOLT RATING

PHOTOCELL TO BE BUTTON TYPE MOUNTED ABOVE DOOR IN ROOF FACING DOWN

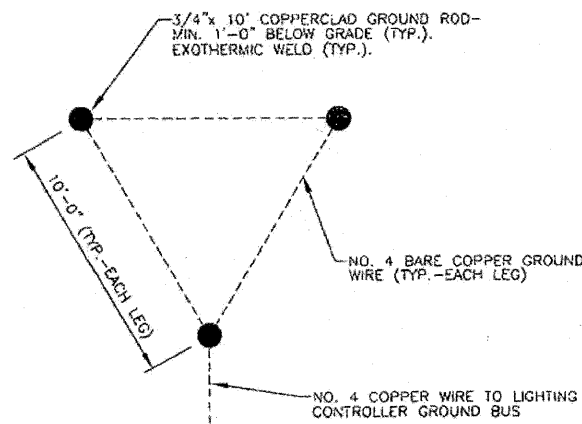


WIRING DIAGRAM

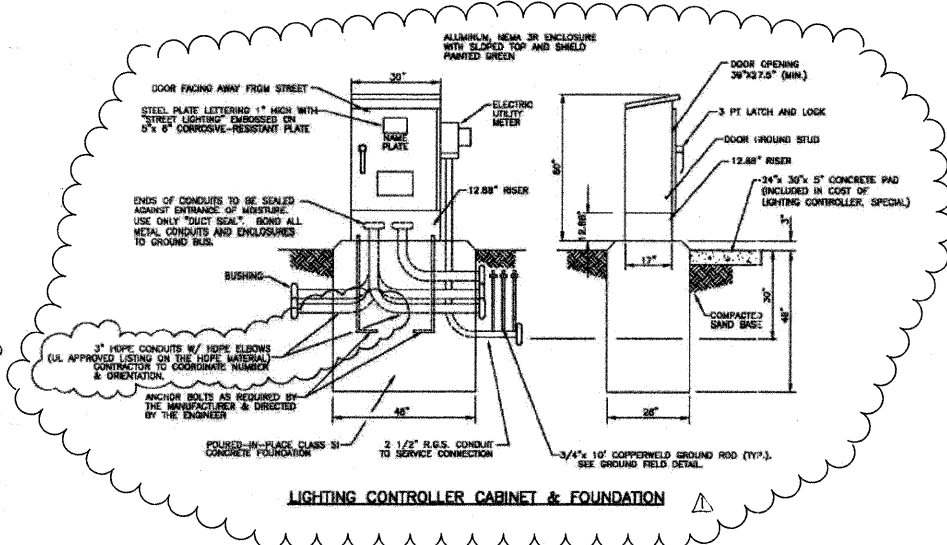


POLE HANDHOLE WIRING DIAGRAM

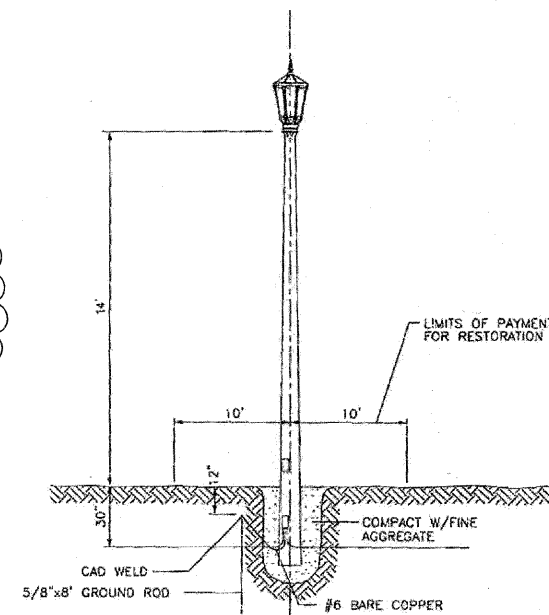
NOTE:
ALL CONDUCTORS IN THE UNIT DUCT RUNS SHALL HAVE INDIVIDUALLY COLOR-CODED INSULATION THROUGHOUT THE ENTIRE LENGTH OF THE CONDUCTOR. THE COLOR IDENTIFICATION FOR THE SYSTEM GROUND SHALL BE GREEN. THE PHASE CONDUCTORS SHALL BE IN ACCORDANCE WITH STANDARD I.D.O.T. PRACTICES FOR WIRING MULTICONDUCTOR CIRCUITS IN SINGLE UNIT DUCT RUNS.



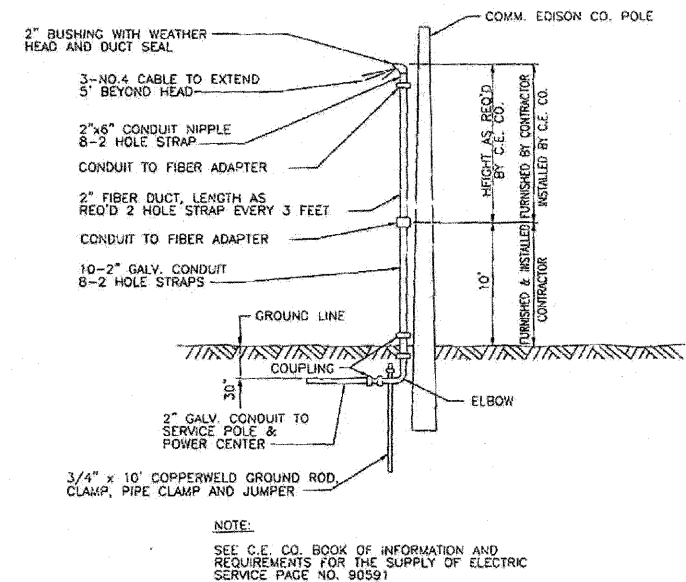
GROUND GRID DETAIL (TYP.)



LIGHTING CONTROLLER CABINET & FOUNDATION



POLE INSTALLATION DETAIL



C.E. CO. OVERHEAD CONNECTION POLE

FILE NAME = W:\756-284-Lombard - GWT Bridges Phase	USER NAME = gonzalo	DESIGNED - BL	REVISED - 9-12-11
	IN:\REC'D DRAWINGS\NAMES\01756284-Ltg-07.dgn	DRAWN - RV	REVISED -
	PLOT SCALE = 5/8" = 1"	CHECKED - MSA	REVISED -
	PLOT DATE = 9/13/2011	DATE -	REVISED -

STATE OF ILLINOIS
GREAT WESTERN TRAIL

LIGHTING DETAILS

SCALE: N.T.S. SHEET NO. SHEETS STA. TO STA.

F.A. RTE.	SECTION	COUNTY	TOTAL SHEETS	SHEET NO.
	06-00151-00-BR	DuPAGE	201	52
CONTRACT NO. 63568				
ILLINOIS FED. AID PROJECT				

AMES Engineering, Inc.
CONSULTING ENGINEERS
1341 Warren Avenue
Downers Grove, IL 60515
(630) 737-1867 (t); (630) 470-9821 (f)
www.amesengineering.com

LTC-07