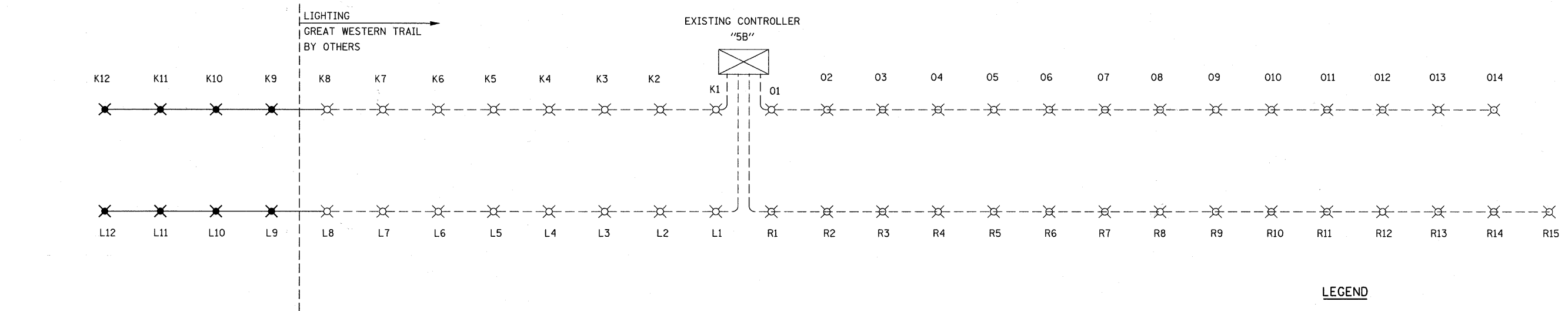
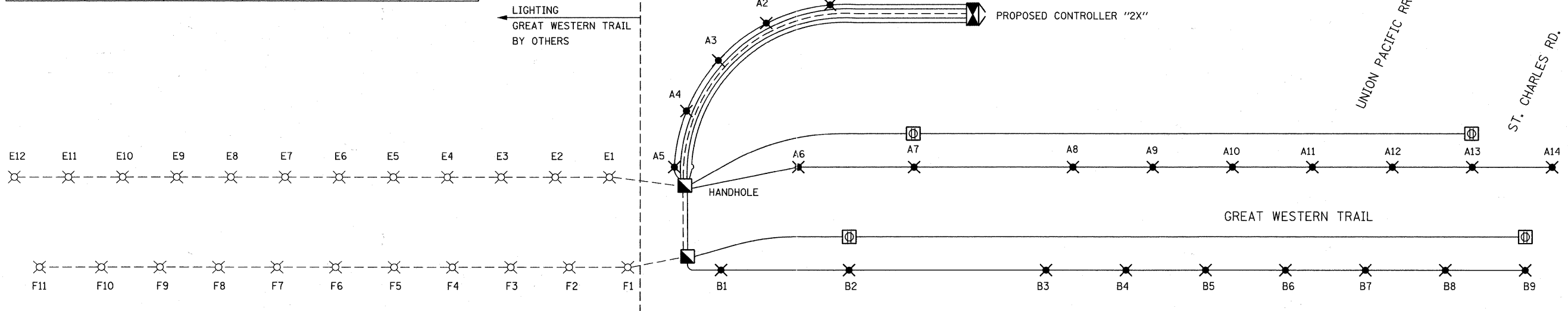


CIRCUIT	AMPS	WATTS	CIRCUIT	AMPS	WATTS
A	8.4	924	B	5.4	594
C	SPARE	SPARE	D	SPARE	SPARE
E	7.2	792	F	6.6	726
	15.6	1716		12.0	1320



CIRCUIT	AMPS	WATTS	CIRCUIT	AMPS	WATTS
O	8.4	924	R	9.0	990
K	7.2	792	L	7.2	792
SPARE	SPARE	SPARE	SPARE	SPARE	SPARE
	15.6	1716		16.2	1782

- LEGEND**
- ✖ 66 WATT LED TYPE 3 LUMINAIRE
 - ⊗ 66 WATT LED TYPE 3 LUMINAIRE (BY OTHERS)
 - UNIT DUCT 2 1/C #6 WITH 1/C #8 GROUND
 - - - - UNIT DUCT 2 1/C #6 WITH 1/C #8 GROUND (BY OTHERS)
 - Ⓛ RECEPTACLE DUPLEX GFCI 20 AMPERE COMMERCIAL GRADE

LTC-04

AMES Engineering, Inc.
CONSULTING ENGINEERS
1341 Warren Avenue
Downers Grove, IL 60515
(630) 737-1987 (t); (630) 470-8891 (f)
www.amesengineeringinc.com

FILE NAME = W:\756-004.Lombard - GWT Bridges Phase	USER NAME = cesario	DESIGNED - BL	REVISED -	STATE OF ILLINOIS GREAT WESTERN TRAIL	WIRING DIAGRAM				F.A. RTE.	SECTION	COUNTY	TOTAL SHEETS	SHEET NO.
	I:\REC'D DRAWINGS\AMES\DI756004-Ltg-04.dgn	DRAWN - RV	REVISED -		SCALE: 1"=50'	SHEET NO.	SHEETS	STA.	TO STA.	06-00151-00-BR	DUPAGE	201	49
	PLOT SCALE = 50.00 / IN.	CHECKED - MSA	REVISED -						CONTRACT NO. 63568		ILLINOIS FED. AID PROJECT		
	PLOT DATE = 7/25/2011	DATE -	REVISED -										