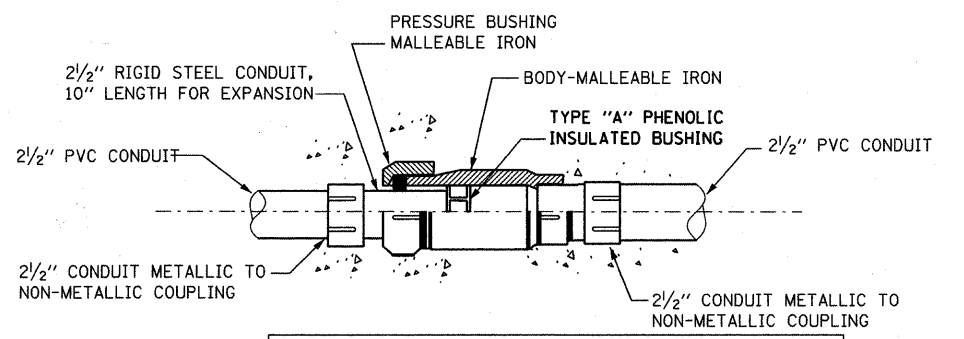
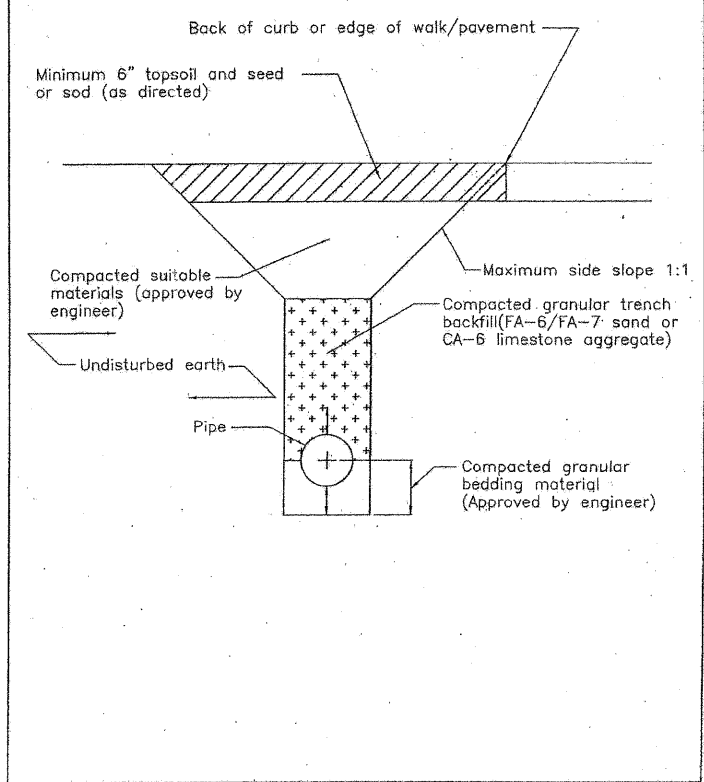
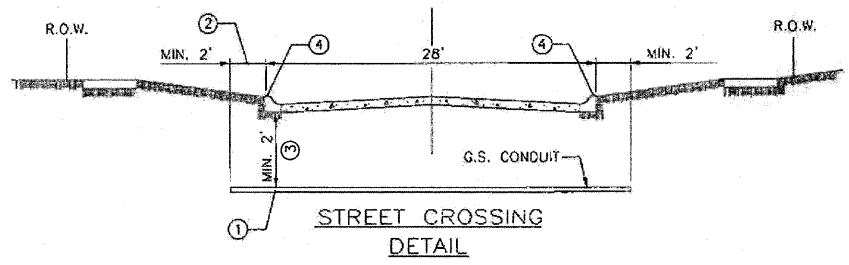


**DUPAGE COUNTY DIVISION OF TRANSPORTATION
TRENCH BACKFILL STANDARD IN NON-PAVED AREAS
(PARKWAYS, ETC.)**

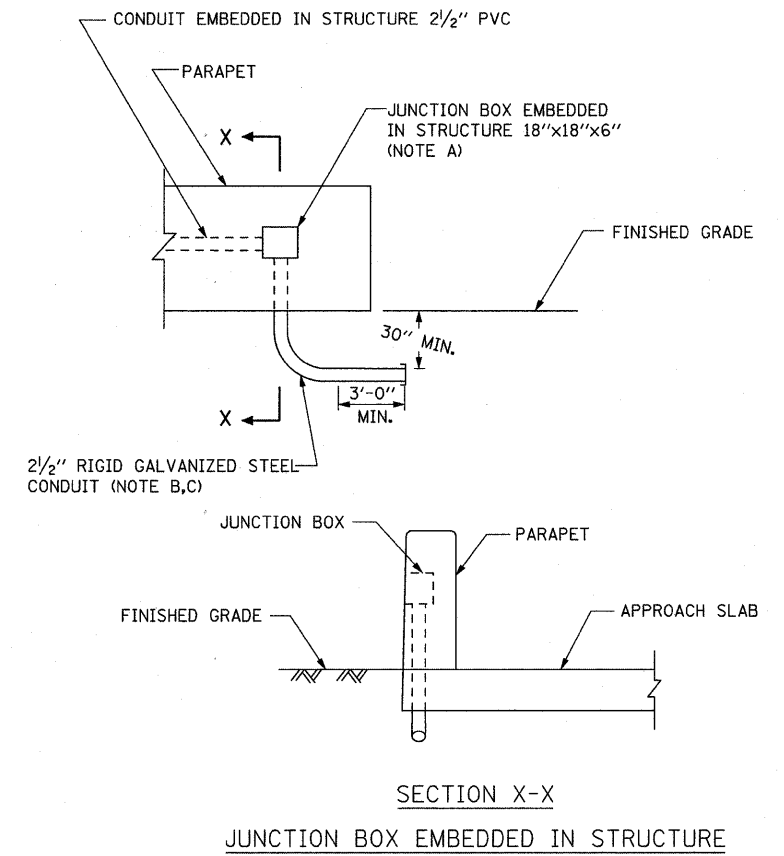


NOTE:
ALL CONDUIT FITTINGS, AND COUPLINGS SHALL
BE INCLUDED IN THE COST OF CONCRETE SUPERSTRUCTURE

CONDUIT EXPANSION FITTING
USE O-Z GEDNEY AX-8-250,
OR APPROVED EQUAL

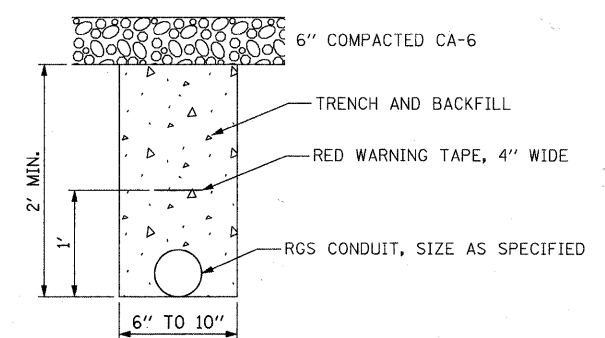


- ① CONDUIT SHALL BE HEAVY WALL RIGID G.S. CONDUIT.
- ② CONDUIT SHALL EXTEND A MINIMUM OF 2 FT. BEYOND BACK OF CURB.
- ③ CONDUIT SHALL BE A MINIMUM OF 2 FT. BELOW BOTTOM OF CURB.
- ④ CHISEL MARK IN TOP BACK OF CONCRETE CURB AT LOCATION OF CROSSING.

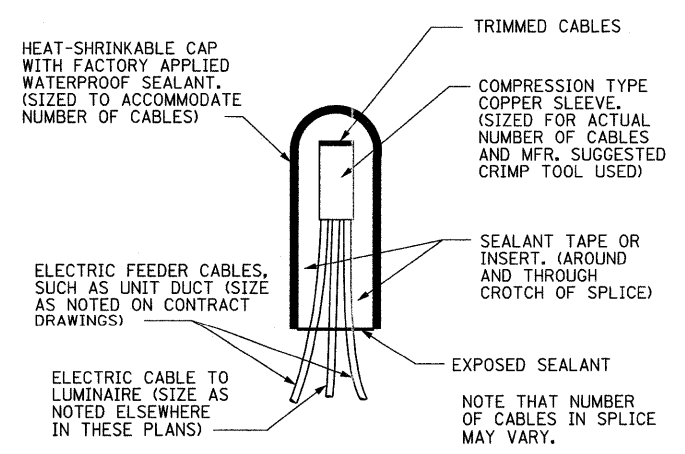


**SECTION X-X
JUNCTION BOX EMBEDDED IN STRUCTURE**

- NOTES:
- A. JUNCTION BOX SHALL BE FURNISHED AND INSTALLED BY ELECTRICAL CONTRACTOR, COORDINATION IS REQUIRED WITH BRIDGE CONTRACTOR.
 - B. CONDUIT EMBEDDED IN STRUCTURE SHALL BE FURNISHED AND INSTALLED BY THE BRIDGE CONTRACTOR. COORDINATION WITH THE ELECTRICAL CONTRACTOR IS REQUIRED. COORDINATE CONDUIT PLACEMENT TO TERMINATE OUTSIDE OF PAVEMENT.
 - C. COST OF GALVANIZED STEEL RACEWAY SHALL BE INCLUDED WITH JUNCTION BOX EMBEDDED IN STRUCTURE.



**PATH CROSSING RESTORATION
(IF NECESSARY)
N.T.S.**



SPLICING DETAIL

FILE NAME = W:\756-004.Lombard - GWT Bridges Phase	USER NAME = cesario	DESIGNED - BL	REVISED -	STATE OF ILLINOIS GREAT WESTERN TRAIL	LIGHTING DETAILS				F.A. RTE.	SECTION	COUNTY	TOTAL SHEETS	SHEET NO.
	I:\REC'D DRAWINGS\AMES\01756004-Ltg-05.dgn	DRAWN - RV	REVISED -						06-00151-00-BR	DUPAGE	201	51	
	PLOT SCALE = 50.00' / IN.	CHECKED - MSA	REVISED -						CONTRACT NO. 63568				
	PLOT DATE = 7/25/2011	DATE -	REVISED -						ILLINOIS FED. AID PROJECT				
				SCALE: N.T.S.	SHEET NO.	SHEETS	STA.	TO STA.					

LTC-06

AMES Engineering, Inc.
CONSULTING ENGINEERS
1341 Warren Avenue
Downers Grove, IL 60515
(630) 737-1987 (t); (630) 470-8891 (f)
www.amesengineeringinc.com