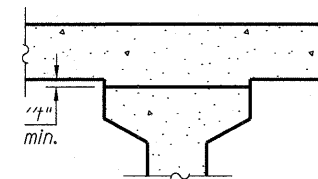
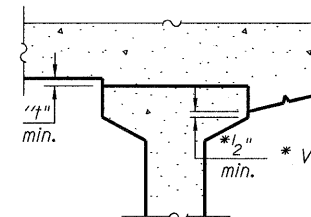


DEAD LOAD DEFLECTION DIAGRAM
(Includes weight of concrete, excluding beams).

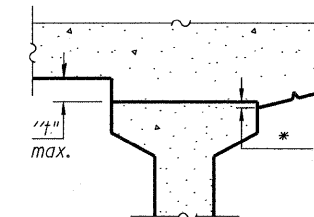
Note:
The above deflections are not to be used in the field if the engineer is working from the grade elevations adjusted for dead load deflections as shown below.



INTERIOR BEAMS



At Minimum Fillet

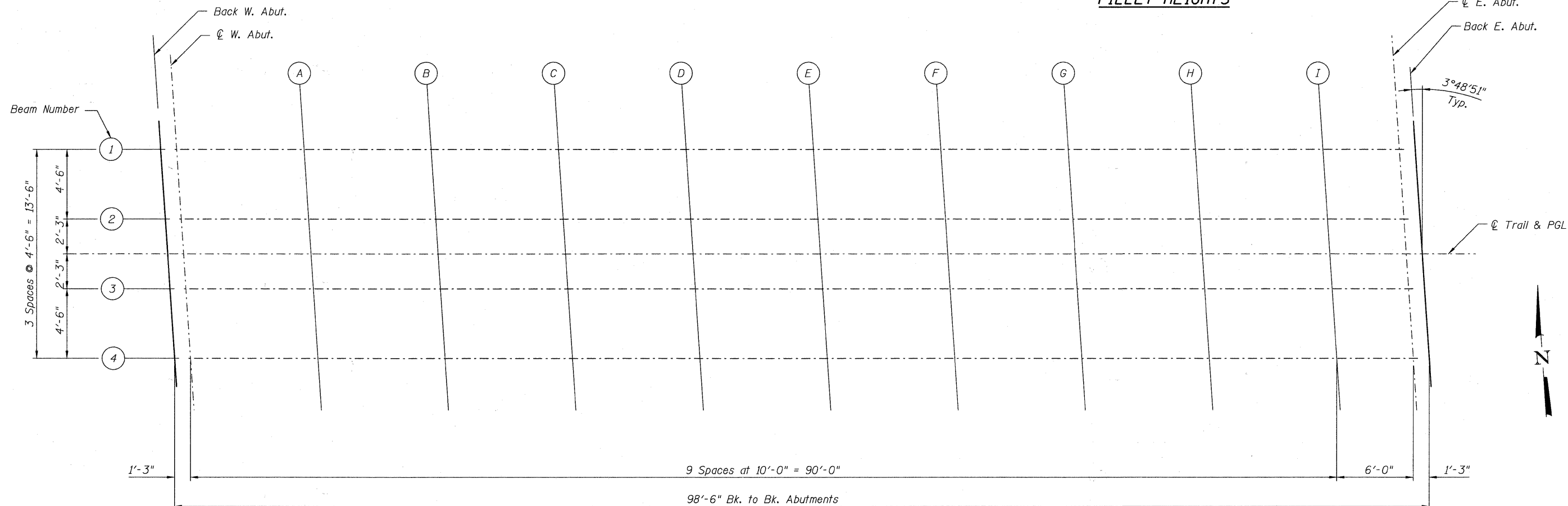


At Maximum Fillet

EXTERIOR BEAMS

To determine "t": After all precast prestressed beams have been erected, elevations of the top flanges of the beams shall be taken at intervals shown on the plans. These elevations subtracted from the "Theoretical Grade Elevations Adjusted for Dead Load Deflections" shown below, minus slab thickness, equals the fillet heights "t" above top flanges of beams.

FILLET HEIGHTS



PLAN

FILE NAME = s:\756-004_lombard - gtr_bridges_phase 1\road\sheet\structural\grace\0223120-003-TOP OF SLAB ELEV I.dgn



USER NAME = gonzo	DESIGNED <i>JJI</i>	REVISED -
PLOT SCALE =	CHECKED <i>SRT</i>	REVISED -
PLOT DATE = 7/26/2011	DRAWN <i>GM</i>	REVISED -
	CHECKED <i>SRT</i>	REVISED -

**STATE OF ILLINOIS
GREAT WESTERN TRAIL
GRACE STREET**

**TOP OF SLAB ELEVATIONS I
STRUCTURE NO. 022-3120**

SHEET NO. 3 OF 25 SHEETS

F.A. RTE.	SECTION	COUNTY	TOTAL SHEETS	SHEET NO.
	06-00151-00-BR	DuPAGE	201	55
ILLINOIS FED. AID PROJECT			CONTRACT NO. 63568	