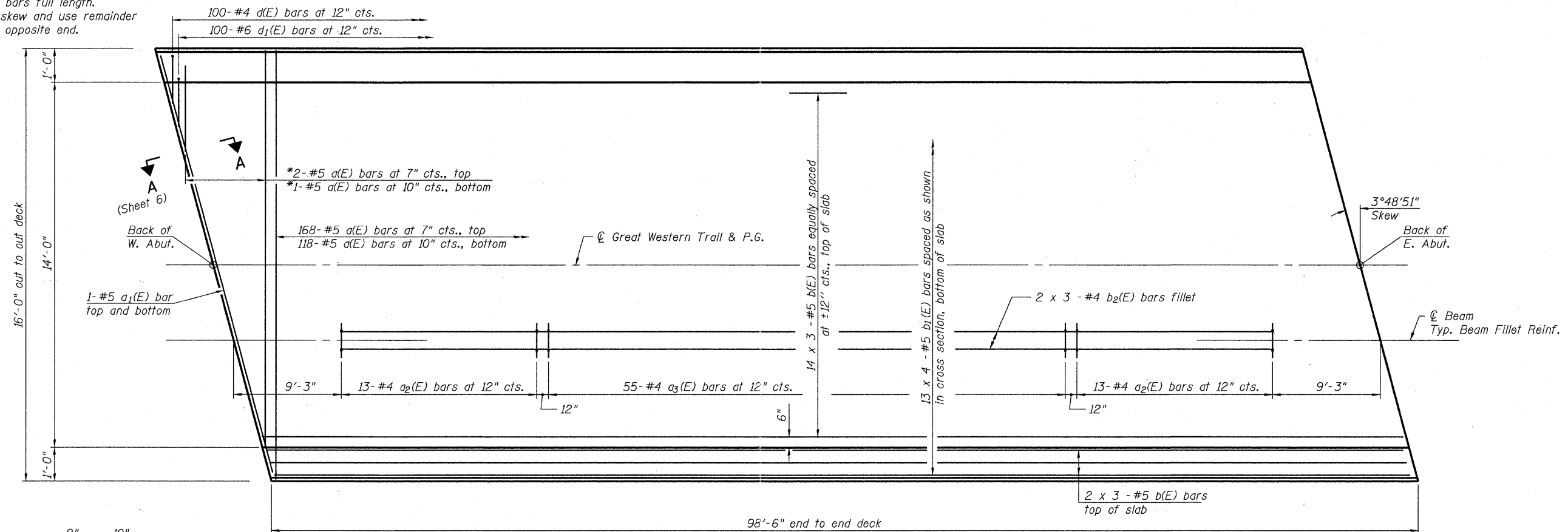
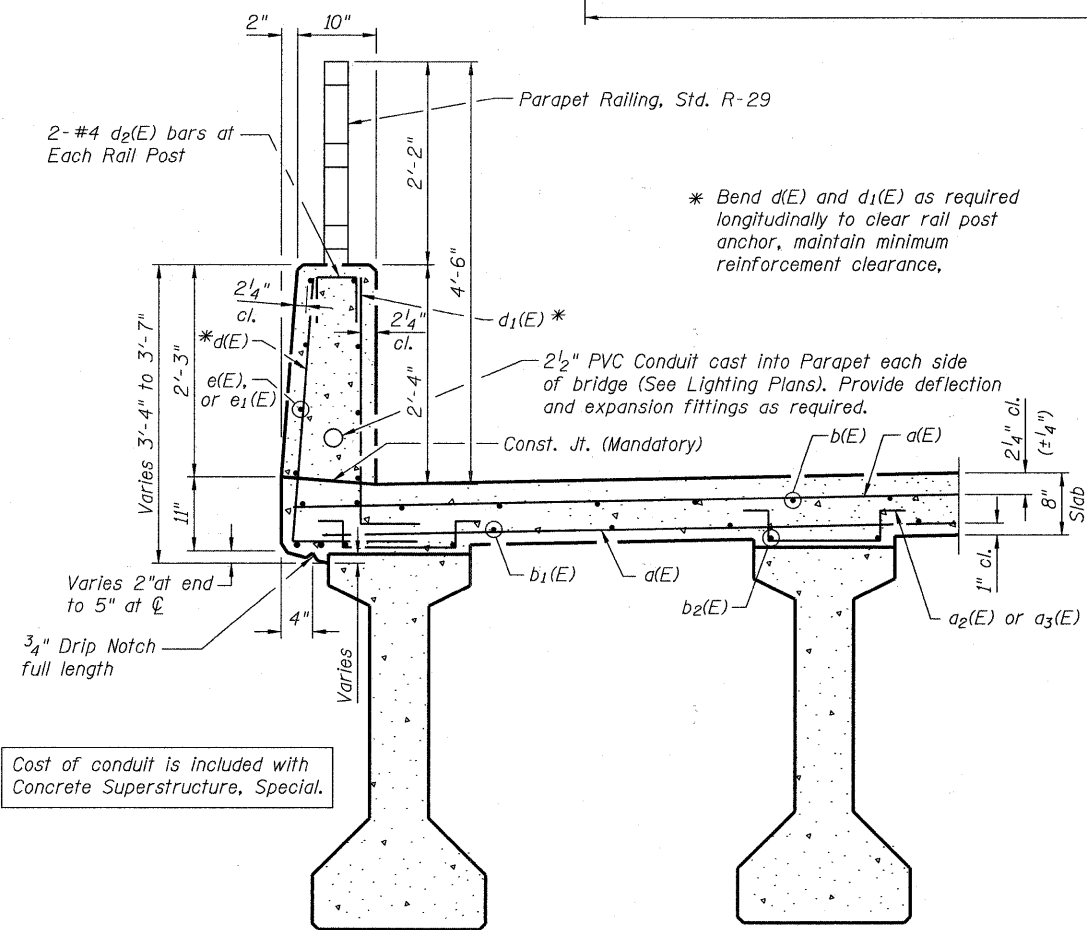


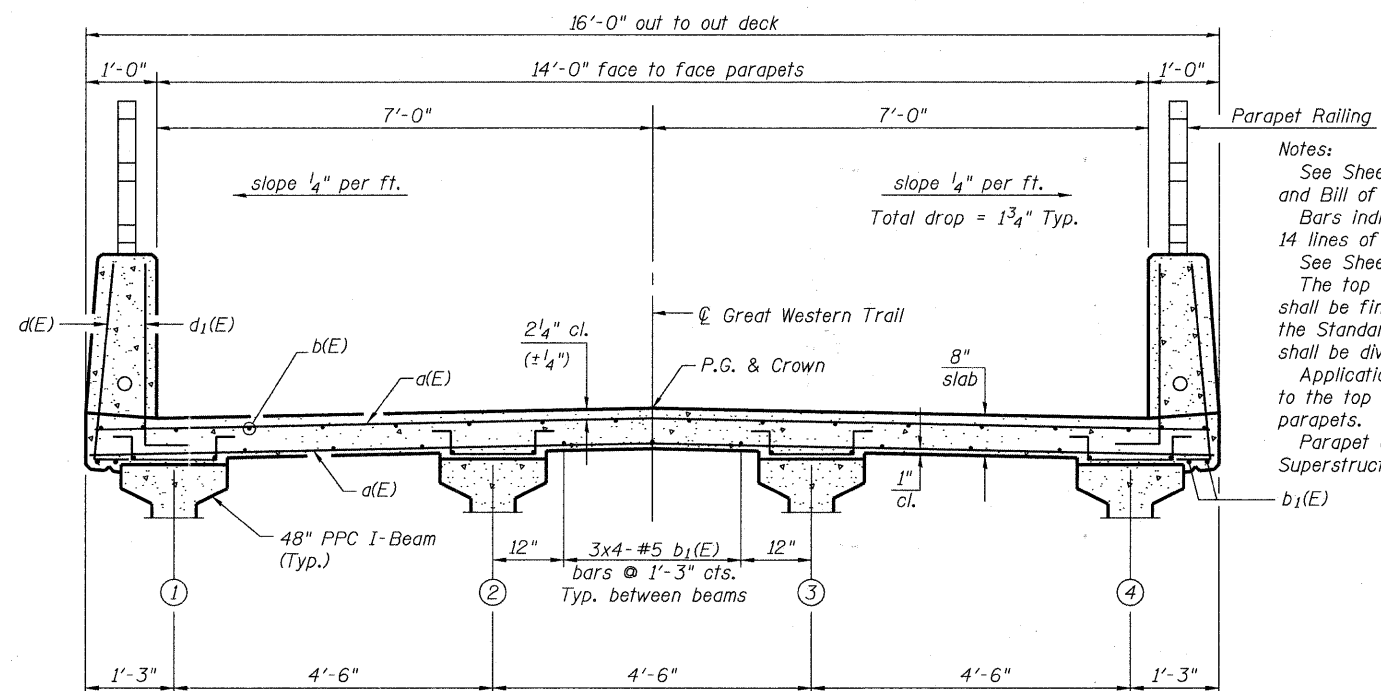
* Order a(E) bars full length.
Cut to fit skew and use remainder
of bars in opposite end.



PLAN



SECTION THRU PARAPET



CROSS SECTION
(Looking West)

Notes:
See Sheet 7 of 25 for superstructure details and Bill of Material.
Bars indicated thus 14 x 3-#5 etc. indicates 14 lines of bars with 3 lengths per line.
See Sheet 7 of 25 for parapet reinforcement.
The top surface of the deck between Parapets shall be finished according to Article 423.06 of the Standard Specifications, except the surface shall be divided by grooves.
Application of Protective Coat shall be limited to the top surface of the bridge deck between parapets.
Parapet concrete to be paid for as Concrete Superstructure, Special.

MIN. BAR LAP
#5 bar = 3'-3"
#4 bar = 2'-7"

FILE NAME = \\V756-2004_Lombard - gnt_bridges_phase 11\add sheets\structural\grace\0223128-065-SUBSTRUCTURE.dgn

Bollinger, Lach & Associates, Inc.
ITASCA, ILLINOIS

USER NAME = gonzo
PLOT SCALE =
PLOT DATE = 7/26/2011

DESIGNED JJT
CHECKED SRT
DRAWN GM
CHECKED SRT

REVISED -
REVISED -
REVISED -
REVISED -

STATE OF ILLINOIS
GREAT WESTERN TRAIL
GRACE STREET

SUPERSTRUCTURE PLAN AND SECTION
STRUCTURE NO. 022-3120

SHEET NO. 5 OF 25 SHEETS

F.A. RTE.	SECTION	COUNTY	TOTAL SHEETS	SHEET NO.
	06-00151-00-BR	DuPAGE	201	57
CONTRACT NO. 63568			ILLINOIS FED. AID PROJECT	