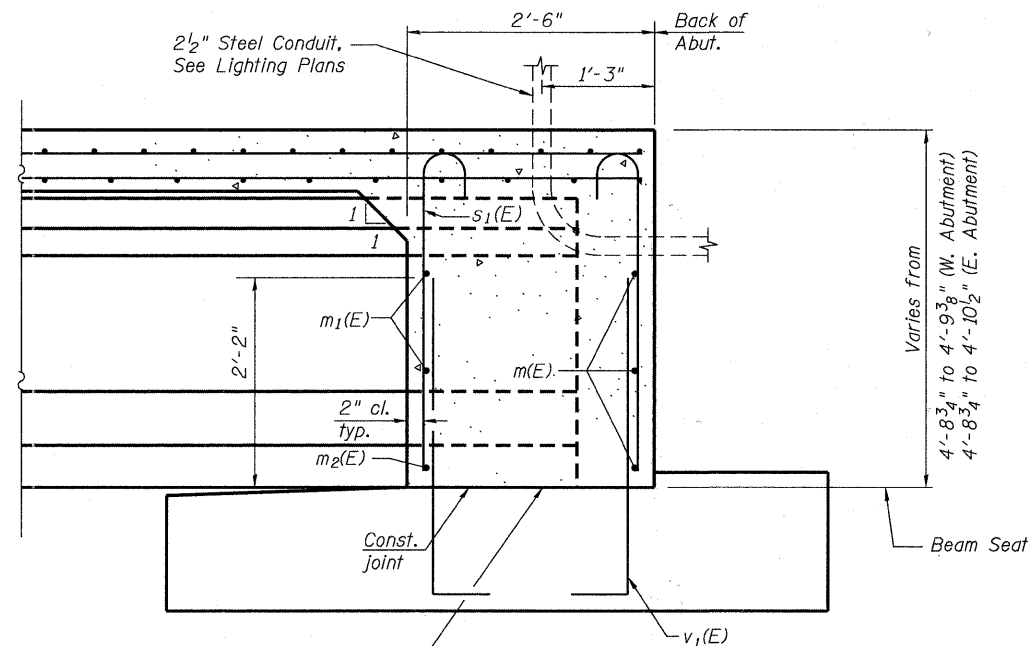


DIAPHRAGM ELEVATION AT ABUTMENT

Notes:
 Reinforcement bars in diaphragm are billed with superstructure on sheet 7 of 25.
 Concrete in diaphragm is included with Concrete Superstructure on sheet 8 of 25.
 For details of bar $v_1(E)$, see sheet 12 & 13 of 25.
 The $s_1(E)$ bars shall be placed parallel to the beams.
 Spacing for these bars shall be at right angles to the beams.



Beam ends shall be set on an initial 1/2" Min. grout (2:1 sand and portland cement, very dry mix) to provide full bearing. Any excess grout squeezed out from under the beam shall be removed. Cost included with Concrete Structures.

SECTION A-A

Dimensions at right angles to abutment, except as shown.

MIN. BAR LAP
 #6 bar = 3'-4"

FILE NAME = h:\756-204_lombard - gwt_bridges phase 11\acad sheets\structural\grace 0223128-006-DIAPHRAGMDETAIL.dgn



USER NAME = gonzo	DESIGNED <i>JIT</i>	REVISED -
PLOT SCALE =	CHECKED <i>SRT</i>	REVISED -
PLOT DATE = 7/26/2011	DRAWN <i>GM</i>	REVISED -
	CHECKED <i>SRT</i>	REVISED -

STATE OF ILLINOIS
GREAT WESTERN TRAIL
GRACE STREET

INTEGRAL ABUTMENT DIAPHRAGM DETAILS
STRUCTURE NUMBER 022-3120

SHEET NO. 6 OF 25 SHEETS

F.A. RTE.	SECTION	COUNTY	TOTAL SHEETS	SHEET NO.
	06-00151-00-BR	DuPAGE	201	58
			CONTRACT NO. 63568	
ILLINOIS FED. AID PROJECT				