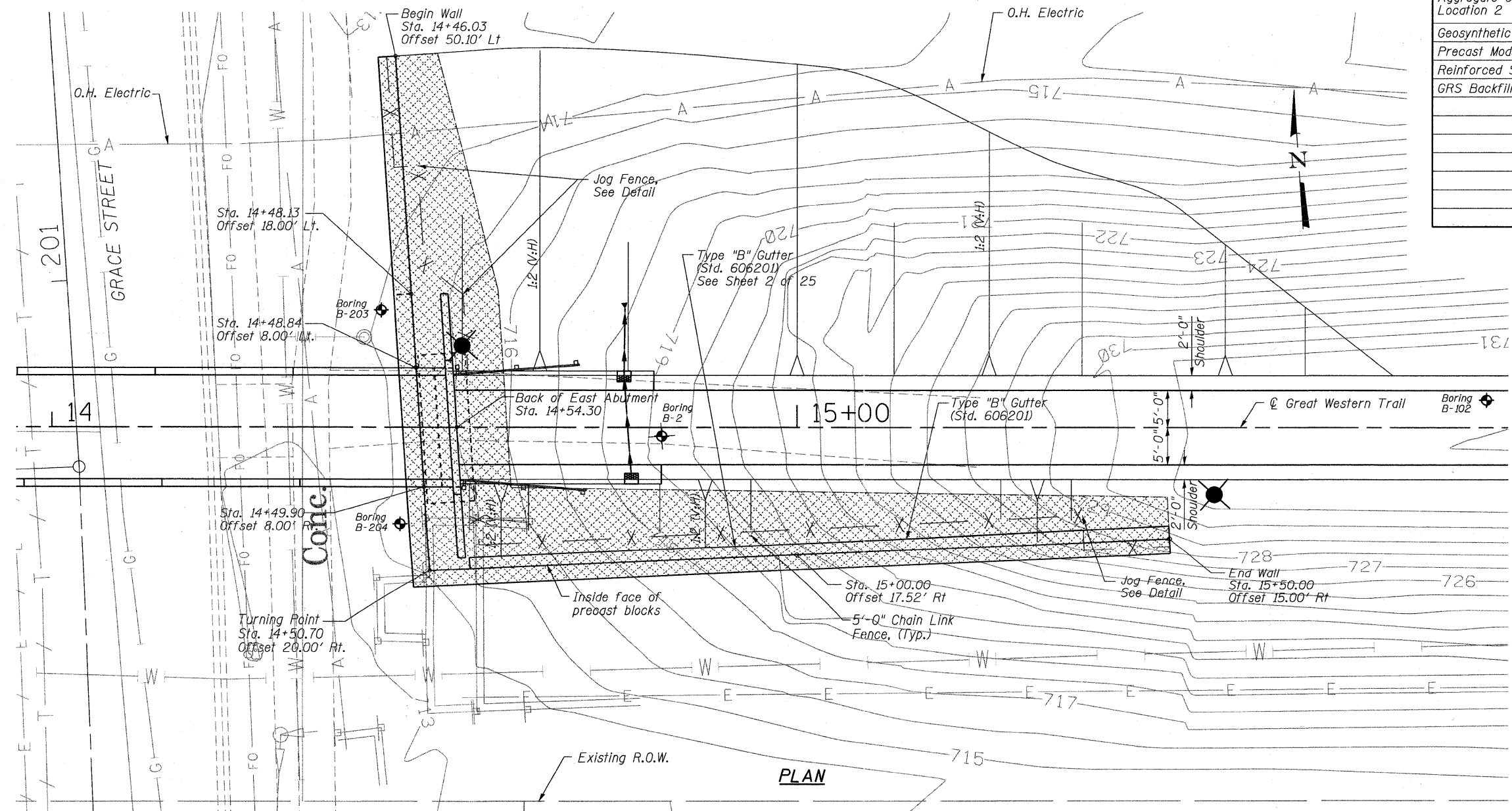


**BILL OF MATERIAL**

	UNIT	TOTAL
Structure Excavation	Cu. Yd.	280
Anti-Graffiti Protection System	Sq. Ft.	2,660
Aggregate Column Ground Improvement - Location 2	L. Sum.	1
Geosynthetic Reinforced Soil	Sq. Ft.	2,260
Precast Modular Blocks	Sq. Ft.	2,260
Reinforced Soil Foundation	Feet	170
GRS Backfill Material	Cu. Yd.	598

Note: Wall offsets are measured from the  $\phi$  Great Western Trail to the inside face of precast blocks.



- Notes:
1. See GRS-IBS sheets for design and construction requirements.
  2. Wall Elevation shows general top of wall layout requirements and minimum bottom of RSF elevations. Wall will be stained. See Special Provisions for Precast Modular Blocks.
  3. See Special Provisions for Aggregate Column Ground Improvement for design and construction requirements, and notes on GRS-IBS Sheets. Aggregate Column Ground Improvement is required below the theoretical bottom of RSF elevation.
  4. Contractor to coordinate location and lengths of soil reinforcement with fence post and light pole, conduit, and unit duct locations shown on Lighting Plans, to avoid conflicts. Any load transfer system required shall be detailed and shown on Shop Drawings.
  5. For Fence and Gutter limits and details, see Roadway Plans.
  6. Anti-Graffiti Protective System applied.

**Bollinger, Lach & Associates, Inc.**  
ITASCA, ILLINOIS

USER NAME =	DESIGNED <i>JJI</i>	REVISED -
PLOT SCALE =	CHECKED <i>SRT</i>	REVISED -
PLOT DATE =	DRAWN <i>GM</i>	REVISED -
	CHECKED <i>SRT</i>	REVISED -

**STATE OF ILLINOIS  
GREAT WESTERN TRAIL  
GRACE STREET**

**EAST ABUTMENT GRS WALL  
STRUCTURE NO. 022-3120**  
SHEET NO. 15 OF 25 SHEETS

F.A. RTE.	SECTION	COUNTY	TOTAL SHEETS	SHEET NO.
	06-00151-00-BR	DuPAGE	201	67
			CONTRACT NO. 63568	
ILLINOIS FED. AID PROJECT				