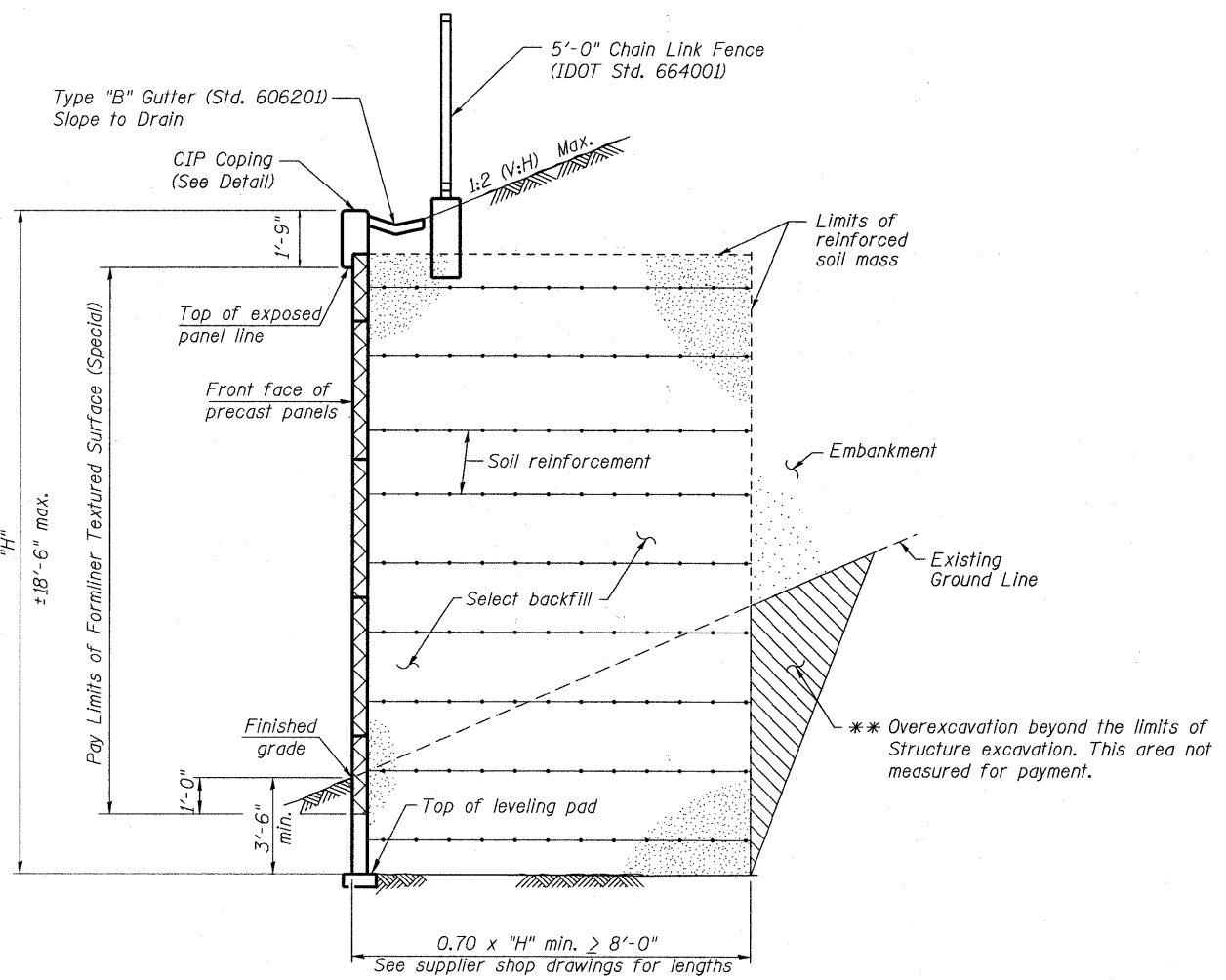
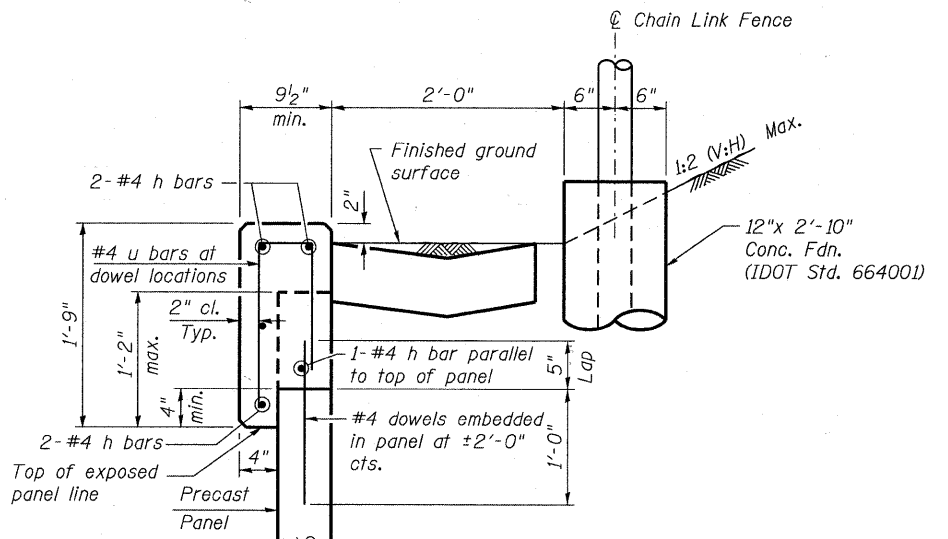


FILE NAME = s:\y756-204_lombard - gwt bridges phase 1\road sheets\structural\North MSE WALL\756-204_002_SECTION.dgn



SECTION THRU MSE WALL

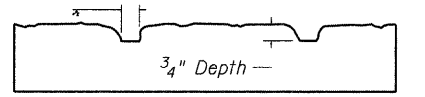
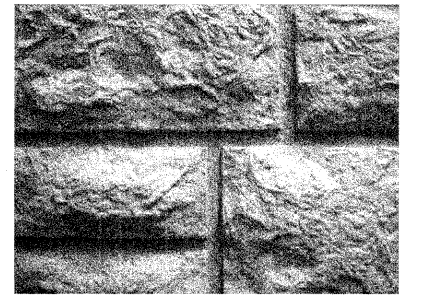
** Backfill overexcavation w/same material as used for select fill



SECTION THRU MSE WALL

TOTAL BILL OF MATERIAL

ITEM	UNIT	TOTAL
Structure Excavation	Cu. Yd.	261
Mechanically Stabilized Earth Retaining Wall	Sq. Ft.	2161
Anti-Graffiti Protection System	Sq. Ft.	1694
Form Liner Texture Surface, Special	Sq. Ft.	1694



**FORM LINER
TEXTURE DETAIL**

Note:
Form Liner Textured Surface (Special) to be used on front face of precast panels. Utilize Fitzgerald Formliners form liner pattern #17027 or equivalent. The depth of relief of the Form Liner Textured Surface is limited to 3/4". The relief should not compromise the reinforcement clearance in the precast.

- Notes:**
- See Special Provisions for Mechanically Stabilized Earth Retaining Wall for design and construction requirements.
 - Cast-in-place concrete and reinforcing steel, epoxy coated required for coping will be included in payment for Mechanically Stabilized Earth Retaining Wall. See Special Provisions.

Bollinger, Lach & Associates, Inc.
IRASCA, ILLINOIS

USER NAME = gonzalo	DESIGNED SRT	REVISED -
PLOT SCALE =	CHECKED JJI	REVISED -
PLOT DATE = 7/26/2011	DRAWN GM	REVISED -
	CHECKED JJI	REVISED -

**STATE OF ILLINOIS
GREAT WESTERN TRAIL
NORTH MSE WALL**

**GENERAL NOTES, BILL OF MATERIAL, MSE WALL SECTION
STRUCTURE NO. 022-3123**

SHEET NO. 2 OF 3 SHEETS

F.A. RTE.	SECTION	COUNTY	TOTAL SHEETS	SHEET NO.
	06-00151-00-BR	DuPAGE	201	79
ILLINOIS FED. AID PROJECT			CONTRACT NO. 63568	