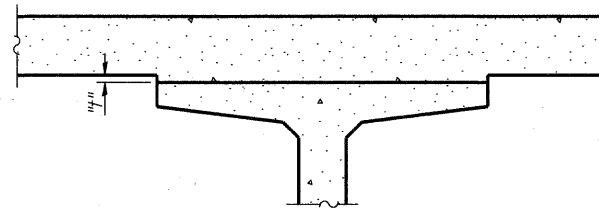


DEAD LOAD DEFLECTION DIAGRAM

(Includes weight of concrete, excluding beams).

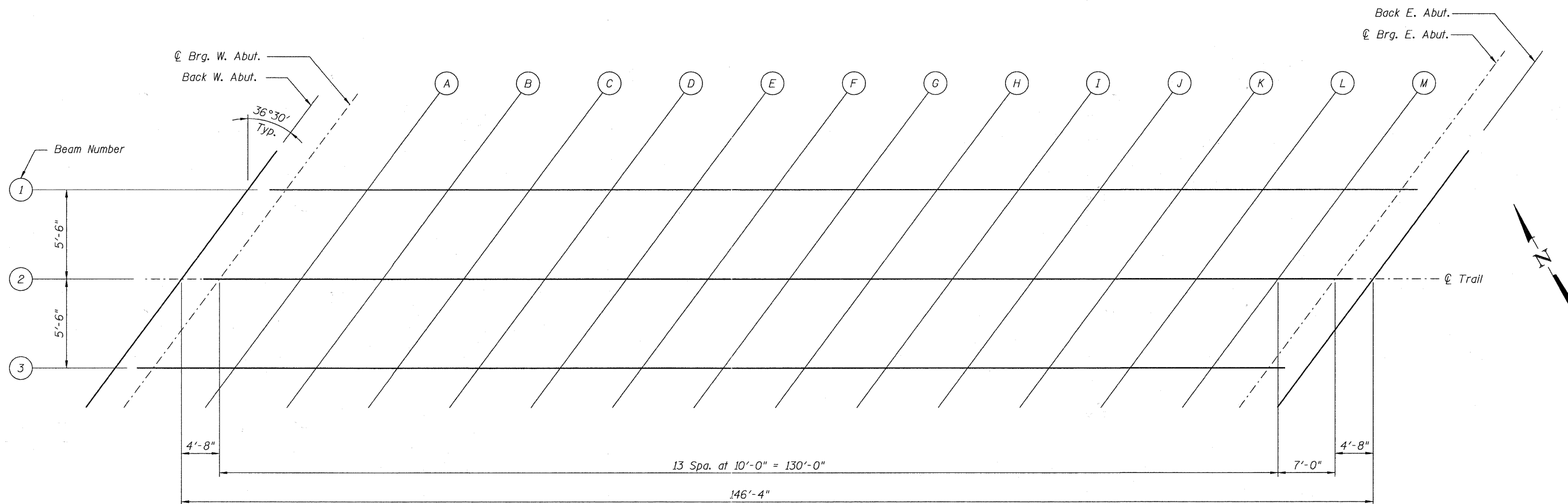
Note:

The above deflections are not to be used in the field if the engineer is working from the grade elevations adjusted for dead load deflections as shown below.



To determine "t": After all precast prestressed beams have been erected, elevations of the top flanges of the beams shall be taken at intervals shown below. These elevations subtracted from the "Theoretical Grade Elevations Adjusted for Dead Load Deflections" shown below, minus slab thickness, equals the fillet heights "t" above top flanges of beams.

FILLET HEIGHTS



PLAN

FILE NAME = s:\756-004\lombard - gwt bridges phase 11\cadd sheets\structural\PRR\022122-003-Top_of_Slab_Elev.dgn

PBT-E 7-1-10

Bollinger, Lach & Associates, Inc.
ITASCA, ILLINOIS

USER NAME = gonzalo	DESIGNED SRT	REVISED -
PLOT SCALE =	CHECKED JJI	REVISED -
PLOT DATE = 7/26/2011	DRAWN GM	REVISED -
	CHECKED JJI	REVISED -

**STATE OF ILLINOIS
GREAT WESTERN TRAIL
UNION PACIFIC RAILROAD**

**TOP OF SLAB ELEVATIONS
STRUCTURE NO. 022-3122**
SHEET NO. 3 OF 37 SHEETS

F.A. RTE.	SECTION	COUNTY	TOTAL SHEETS	SHEET NO.
	06-00151-00-BR	DuPAGE	201	83
CONTRACT NO. 63568				
ILLINOIS FED. AID PROJECT				