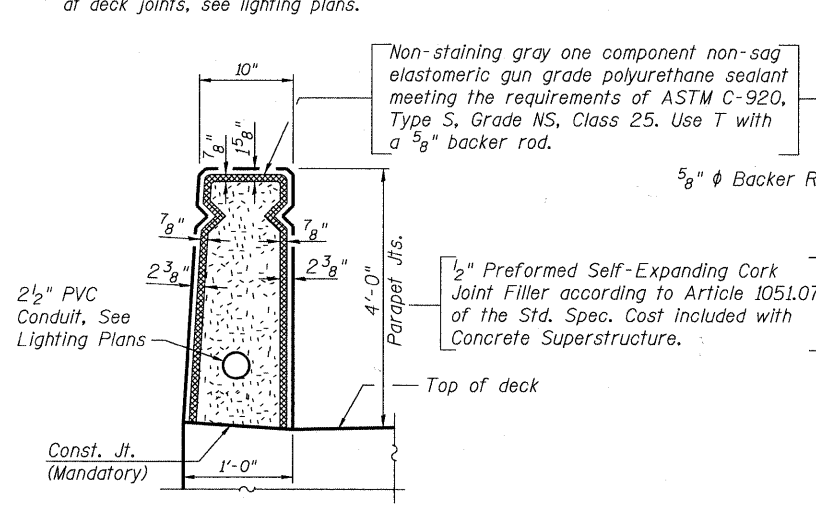


* Locate top row of longitudinal parapet reinforcement clear of rail post anchors, maintain minimum reinforcement clearance.

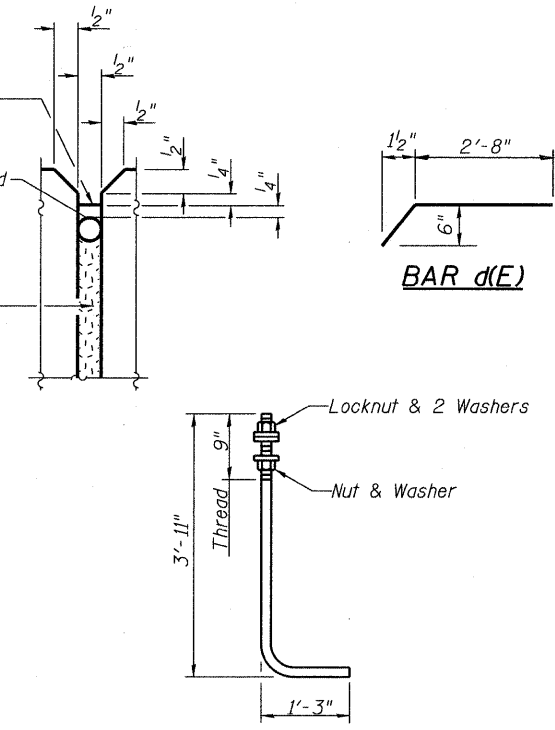
SUPERSTRUCTURE BILL OF MATERIAL

| Bar | No. | Size | Length | Shape |
|--------------------------------------|-----|------|---------|--------|
| a(E) | 375 | #5 | 15'-9" | — |
| a ₃ (E) | 6 | #5 | 5'-2" | — |
| a ₄ (E) | 2 | #5 | 12'-8" | — |
| a ₅ (E) | 4 | #5 | 19'-7" | — |
| a ₆ (E) | 6 | #5 | 3'-10" | — |
| b(E) | 90 | #5 | 30'-10" | — |
| b ₁ (E) | 96 | #5 | 26'-3" | — |
| d(E) | 284 | #5 | 3'-2" | — |
| d ₁ (E) | 284 | #6 | 3'-7" | — |
| d ₂ (E) | 290 | #5 | 3'-9" | — |
| d ₃ (E) | 290 | #5 | 4'-7" | — |
| d ₄ (E) | 64 | #4 | 2'-0" | — |
| d ₅ (E) | 6 | #6 | 3'-11" | — |
| d ₆ (E) | 12 | #6 | 8'-5" | — |
| e(E) | 140 | #4 | 17'-4" | — |
| e ₁ (E) | 20 | #4 | 17'-7" | — |
| m(E) | 8 | #4 | 5'-11" | — |
| m ₁ (E) | 2 | #6 | 4'-2" | — |
| m ₃ (E) | 4 | #4 | 12'-8" | — |
| m ₄ (E) | 1 | #6 | 12'-8" | — |
| s ₂ (E) | 6 | #4 | 8'-11" | — |
| x(E) | 12 | #6 | 5'-0" | — |
| x ₁ (E) | 10 | #6 | 8'-3" | — |
| x ₂ (E) | 12 | #6 | 8'-1" | — |
| Reinforcement Bars, Epoxy Coated | | | Pound | 19,460 |
| Anti-Graffiti Protection System | | | Sq. Ft. | 2,468 |
| Concrete Superstructure | | | Cu. Yd. | 73.2 |
| Concrete Superstructure, Special | | | Cu. Yd. | 37.9 |
| Form Liner Textured Surface, Special | | | Sq. Ft. | 1,904 |
| Protective Coat | | | Sq. Yd. | 226 |

I.F. = Inside Face
O.F. = Outside Face
E.F. = Each Face

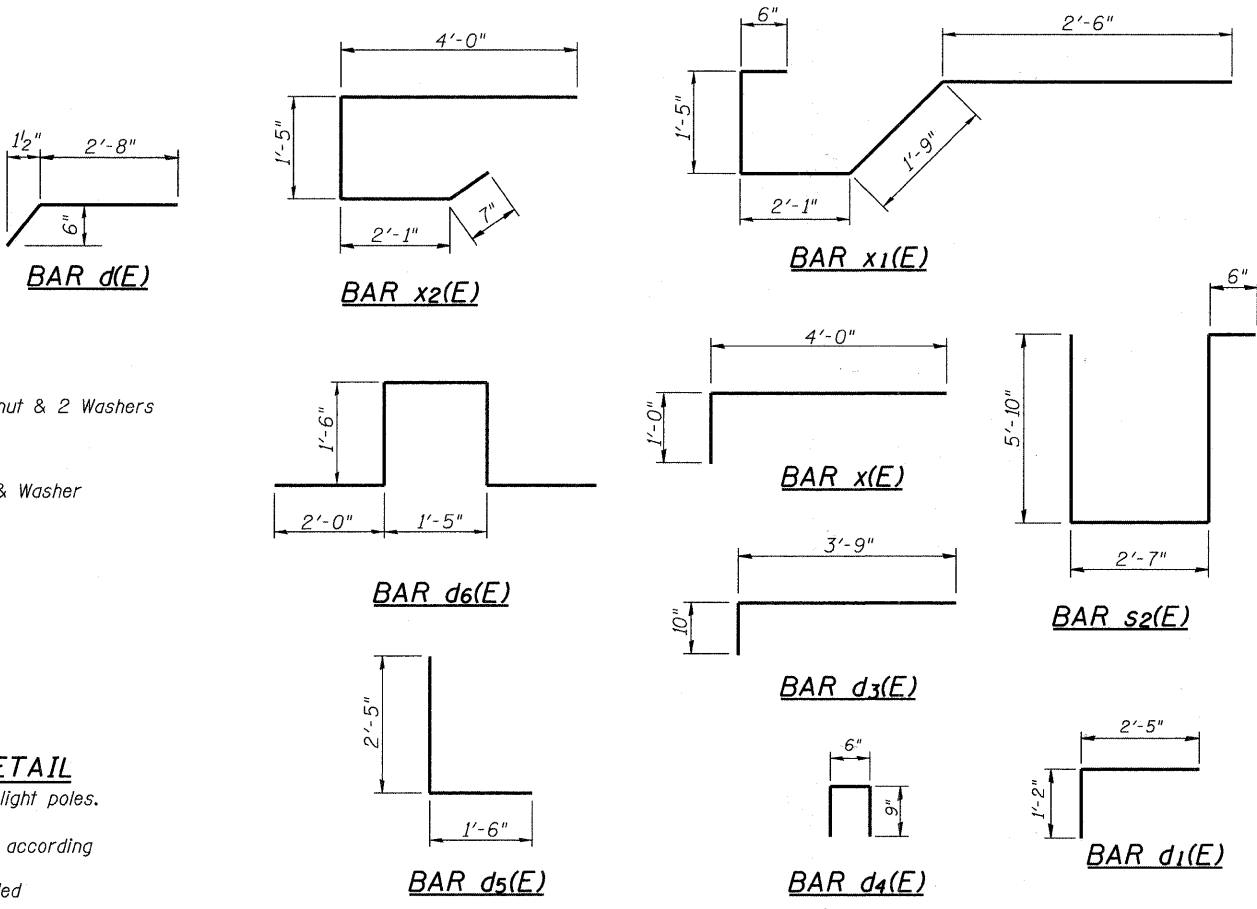


PARAPET JOINT DETAILS



ANCHOR ROD DETAIL

Diameter as specified for light poles. (ASTM F 1554 Grade 105)
Galvanize after fabrication according to AASHTO M232.
Cost of anchor rods included Concrete Superstructure



FILE NAME = w:\756-084_lombard - get bridges phase 1\load sheets\structural\IPRR\0223122-008-SuperStructure Details.dgn

Bollinger, Lach & Associates, Inc.
ITASCA, ILLINOIS

USER NAME = gonzo
DESIGNED SRT
CHECKED JJI
DRAWN GM
PLOT DATE = 7/26/2011

DESIGNED SRT
CHECKED JJI
DRAWN GM
CHECKED JJI

REVISED -
REVISED -
REVISED -
REVISED -

**STATE OF ILLINOIS
GREAT WESTERN TRAIL
UNION PACIFIC RAILROAD**

**SUPERSTRUCTURE DETAILS
STRUCTURE NO. 022-3122**
SHEET NO. 8 OF 37 SHEETS

| F.A. RTE. | SECTION | COUNTY | TOTAL SHEETS | SHEET NO. |
|-----------|----------------|--------|--------------------|-----------|
| | 06-00151-00-BR | DuPAGE | 201 | 88 |
| | | | CONTRACT NO. 63568 | |

ILLINOIS FED. AID PROJECT