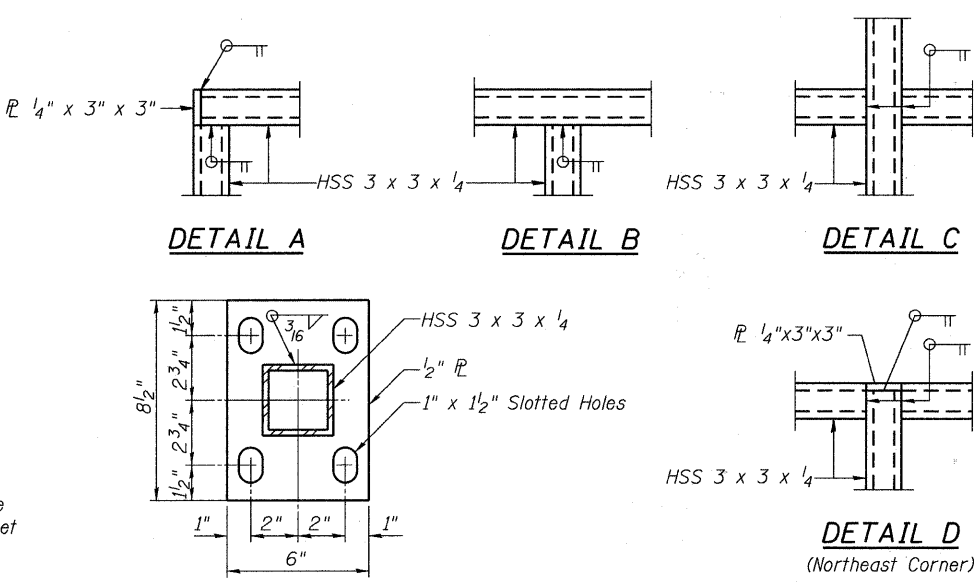
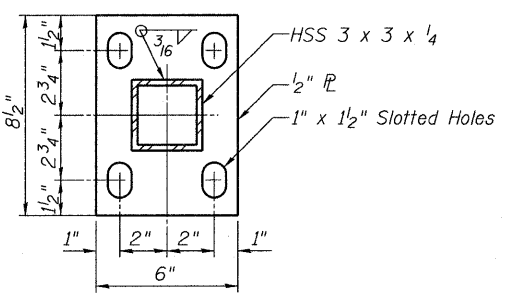


**PARAPET RAILING  
ELEVATION - APPROACHES**  
(Outside Face of Three Element Rail)  
Moment Slab Similar See Plan below

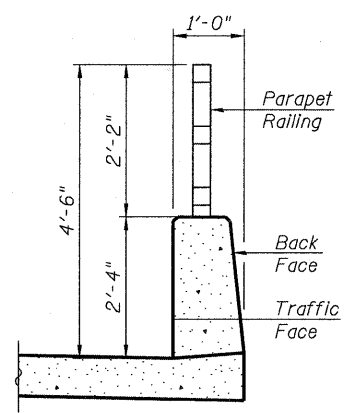


**DETAIL A**      **DETAIL B**      **DETAIL C**

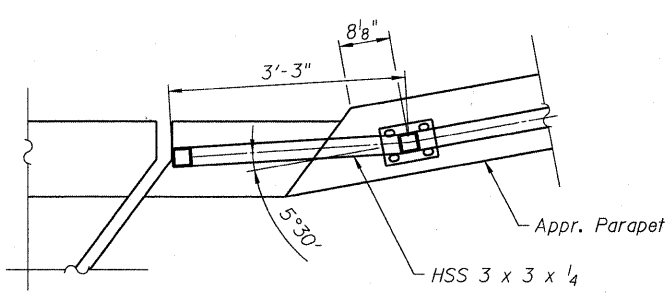


**BASE PL**

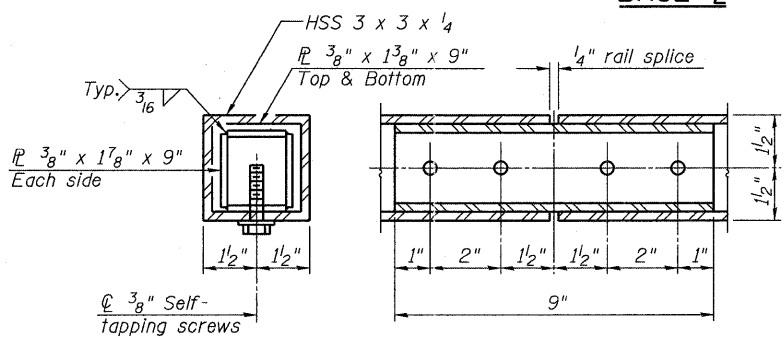
**Notes:**  
All steel rail elements shall be galvanized according to Article 509.05 of the Standard Specifications.



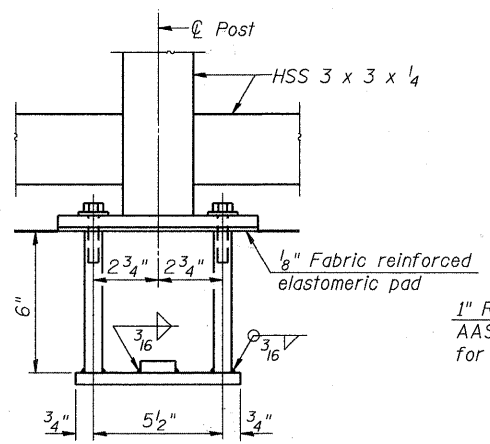
**SECTION THRU APPROACH SLAB**  
Moment Slab at SE MSE Wall Similar



**PLAN**  
(Northeast Corner Bridge)

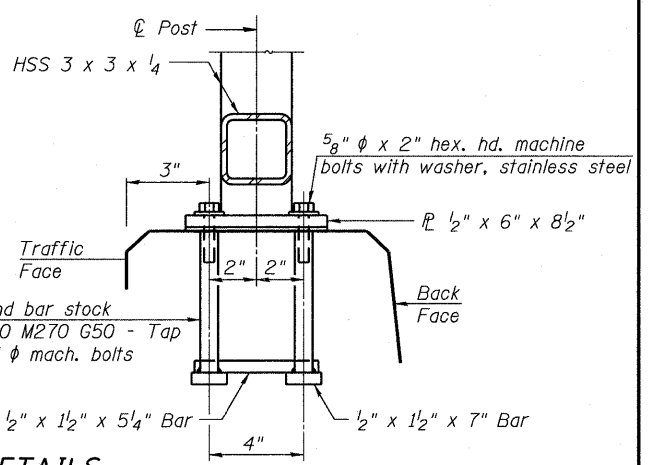


**RAIL SPLICE**



**ANCHOR BOLT DETAILS**

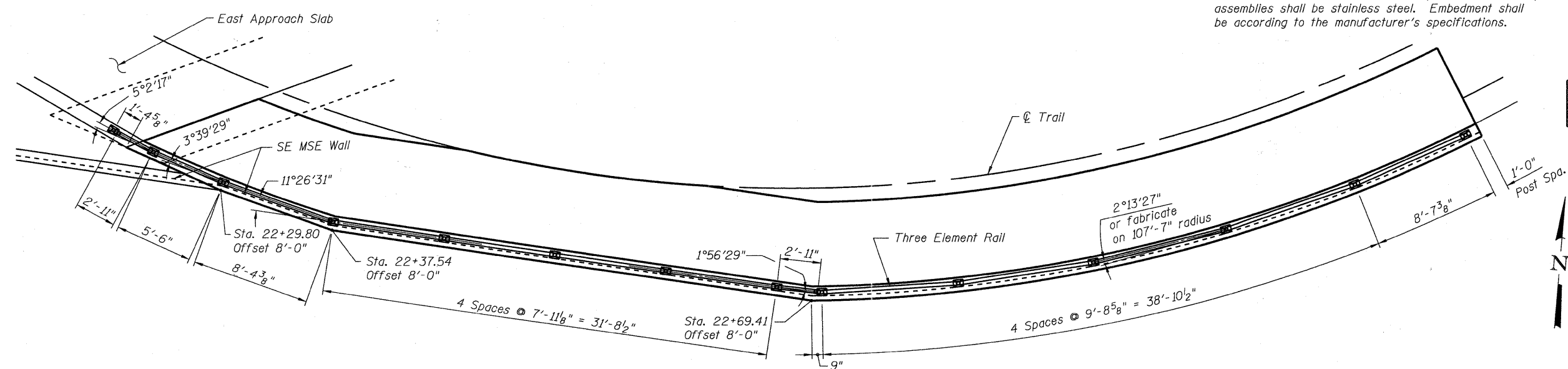
In lieu of the cast-in-place anchor device shown, the Contractor has the option of drilling and setting 5/8" phi anchor rods according to Article 509.06 of the Standard Specifications, except anchor rod assemblies shall be stainless steel. Embedment shall be according to the manufacturer's specifications.



**BILL OF MATERIAL \***

Item	Unit	Quantity
Parapet Railing	Foot	189.3

\* Approach slab quantity 88.0'. Southeast MSE wall 101.3'.



**PLAN - SOUTHEAST MSE  
WALL MOMENT SLAB**

R-29      7-1-10      (10'-0" Maximum Post Spacing)

(See sheet 33 of 37)

**Bollinger, Lach & Associates, Inc.**  
ITASCA, ILLINOIS

USER NAME = gonzalo	DESIGNED SRT	REVISED -
PLLOT SCALE =	CHECKED JJI	REVISED -
PLLOT DATE = 7/26/2011	DRAWN GM	REVISED -
	CHECKED JJI	REVISED -

**STATE OF ILLINOIS  
GREAT WESTERN TRAIL  
UNION PACIFIC RAILROAD**

**PARAPET RAILING  
STRUCTURE NO. 022-3122**

SHEET NO. 13 OF 37 SHEETS

F.A. RTE.	SECTION	COUNTY	TOTAL SHEETS	SHEET NO.
	06-00151-00-BR	DuPAGE	201	93
CONTRACT NO. 63568			ILLINOIS FED. AID PROJECT	