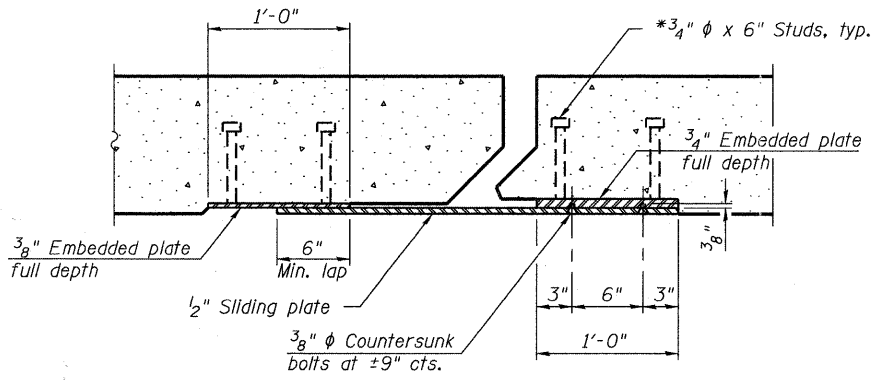
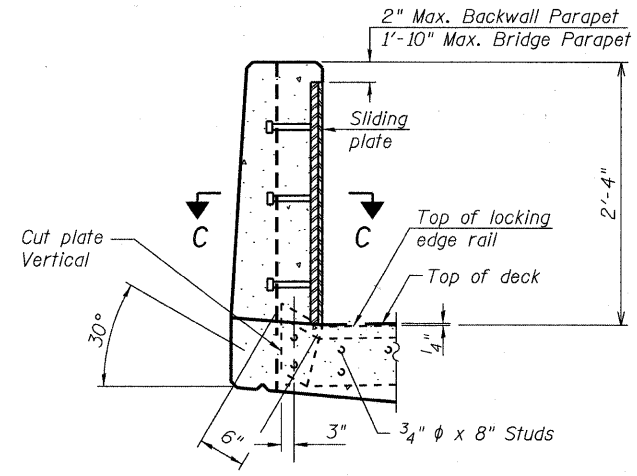


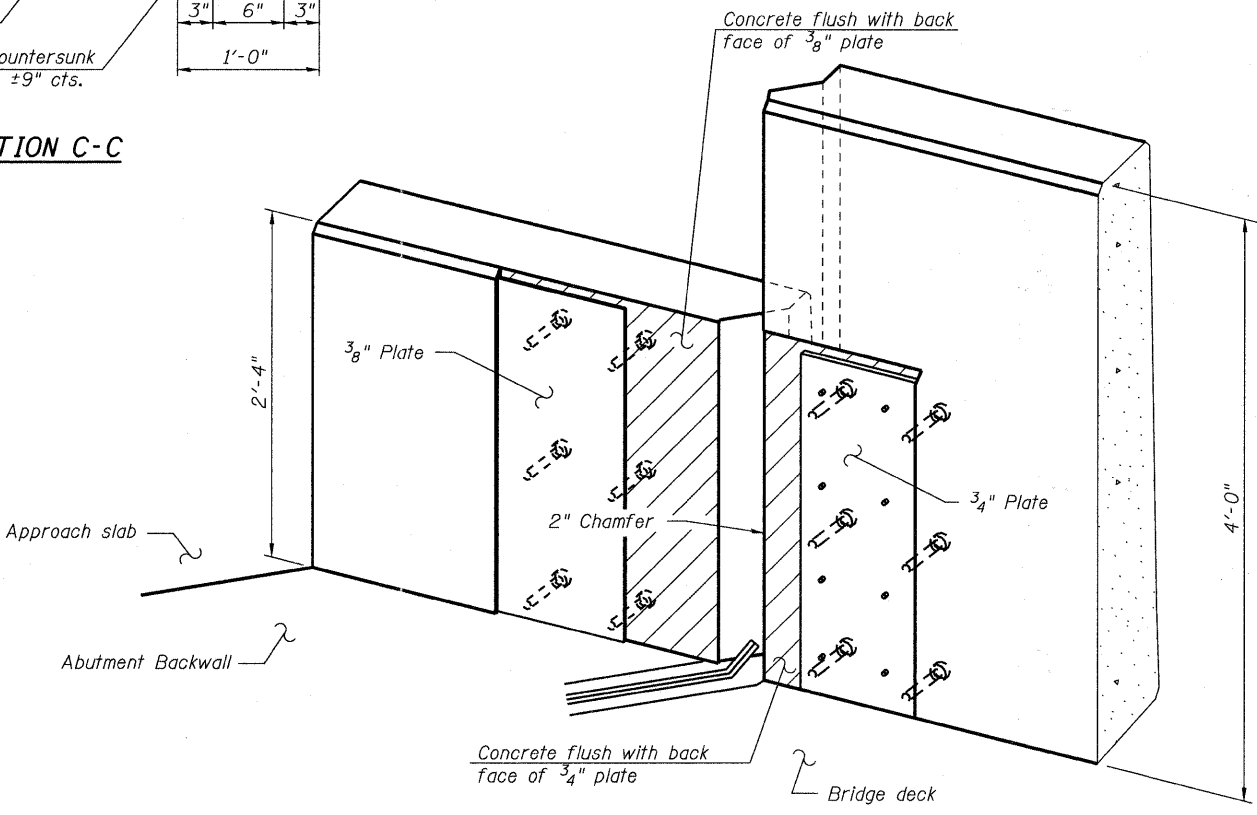
PLAN
(For skews > 30°)
Showing point block



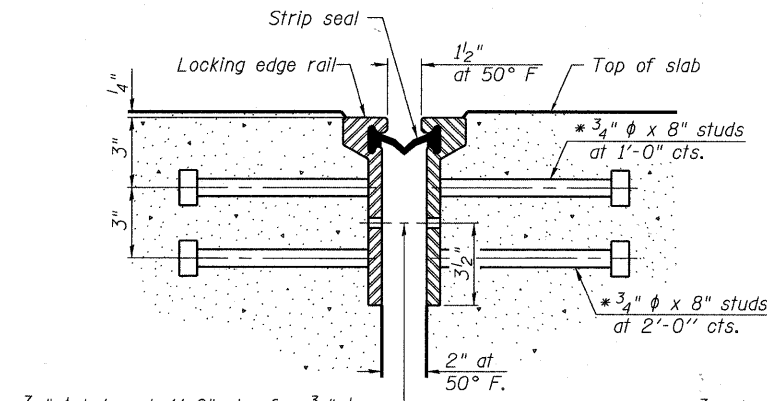
SECTION C-C



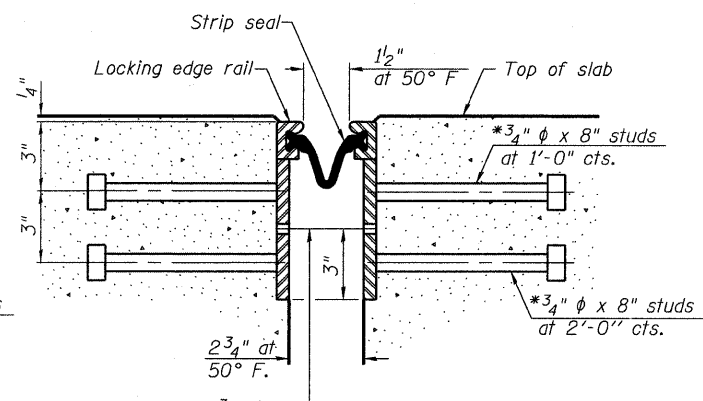
SECTION B-B



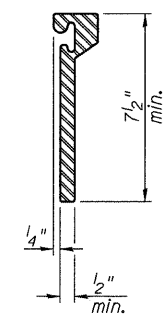
TRIMETRIC VIEW
(Showing back plates only)



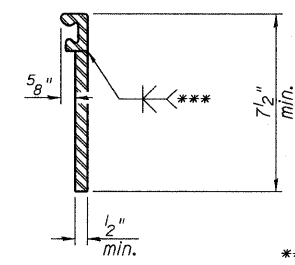
SECTION THRU ROLLED RAIL JOINT



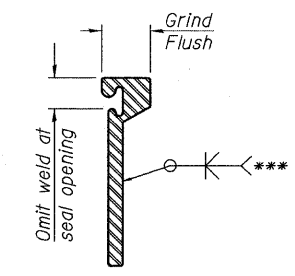
SECTION THRU WELDED RAIL JOINT



ROLLED EXTRUDED RAIL



WELDED RAIL



LOCKING EDGE RAIL SPLICE

The inside of the locking edge rail groove shall be free of weld residue.
Rolled rail shown, welded rail similar.

7/16" φ holes at 4'-0" cts. for 3/8" φ bolts. All bolts shall be burned, sawed, or chipped off flush with the plates after forms are removed, typ.

7/16" φ holes at 4'-0" cts. for 3/8" φ bolts. All bolts shall be burned, sawed, or chipped off flush with the plates after forms are removed, typ.

*** Back gauge not required if complete joint penetration is verified by mock-up.

Notes:
The strip seal shall be made continuous and shall have a minimum thickness of 1/4". The configuration of the strip seal shall match the configuration of the Locking Edge Rails. Open or "webbed" strip seal gland configurations are not permitted. The gland shall be sized for a maximum rated movement of 4 inches.
The Locking Edge Rails depicted are conceptual only, except for the minimum dimensions shown. The actual configuration of the Locking Edge Rails and matching strip seal may vary from manufacturer to manufacturer. Flanged edge rails will not be allowed. Locking Edge Rails may be spliced at slope discontinuities.
The manufacturer's recommended installation methods shall be followed.

The joint opening and deck dimensions detailed on the superstructure are based on a rolled rail expansion joint. If the Contractor elects to use the welded rail expansion joint, the opening and deck dimensions shall be modified according to the dimensions detailed on this sheet. Required modifications shall be made at no additional cost to the State.
All steel components shall be galvanized after fabrication according to Article 520.03 of the Standard Specifications. Countersunk bolts shall be stainless steel or galvanized according to AASHTO M232.
Maximum space between rail segments at stage lines shall be 3/16", sealed with a suitable sealant.
Parapet plates and anchorage studs for skews > 30° included in the cost of Preformed Joint Strip Seal.

LOCKING EDGE RAILS

BILL OF MATERIAL

Item	Unit	Total
Preformed Joint Strip Seal	Foot	40.0

FILE NAME = s:\756-004\lombard - gwt bridges\phase 11\load sheets\structure\UPRR\0223122-314-PREFORMED JOINT STRIP SEAL.dgn

Bollinger, Lach & Associates, Inc.
ITASCA, ILLINOIS

USER NAME = gonzo
PLOT SCALE =
PLOT DATE = 7/26/2011

DESIGNED SRT
CHECKED JJI
DRAWN GM
CHECKED JJI

REVISED -
REVISED -
REVISED -
REVISED -

**STATE OF ILLINOIS
GREAT WESTERN TRAIL
UNION PACIFIC RAILROAD**

**PREFORMED JOINT STRIP SEAL
STRUCTURE NO. 022-3122**
SHEET NO. 14 OF 37 SHEETS

F.A. RTE.	SECTION	COUNTY	TOTAL SHEETS	SHEET NO.
	06-00151-00-BR	DuPAGE	201	94
				CONTRACT NO. 63568

ILLINOIS FED. AID PROJECT