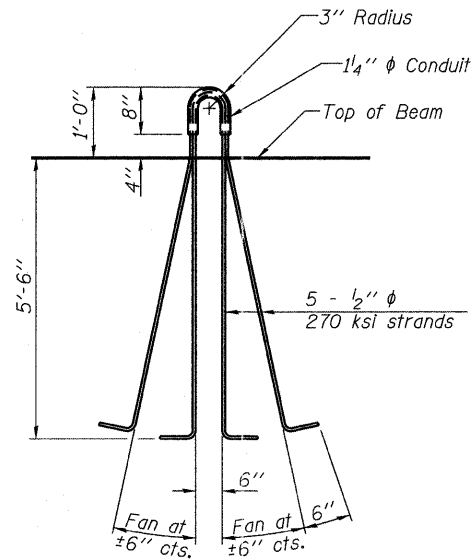
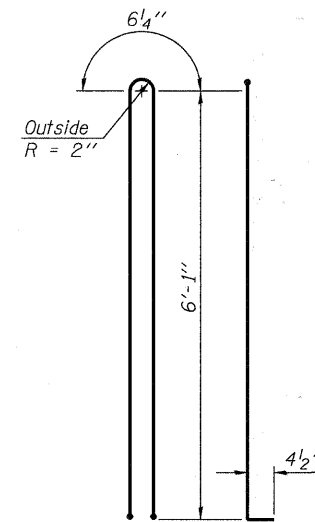


**NOTES**

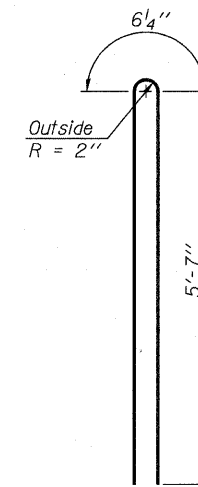
Inserts for  $\frac{3}{4}$ "  $\phi$  threaded dowel rods, when specified, are to be two strut, ferrule type for interior beams and single ferrule, flared loop type for exterior beams.  
 Prestressing steel shall be uncoated high strength, low relaxation 7-wire strand, Grade 270. The nominal diameter shall be  $\frac{1}{2}$ " and the nominal cross-sectional area shall be 0.153 sq. in.  
 Reinforcement bars shall conform to ASTM A 706, Grade 60. (See Special Provisions).  
 A minimum  $2\frac{1}{2}$ "  $\phi$  lifting pin shall be used to engage the lifting loops during handling.  
 The top and bottom plates shall be AASHTO M270 Grade 50.  
 The bottom plates and studs shall be galvanized according to AASHTO M111. Top plates and threaded rods need not be galvanized.  
 Threaded rods shall be ASTM F 1554 Grade 55.



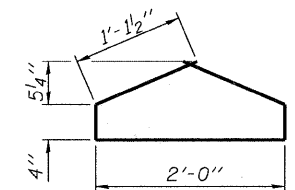
**LIFTING LOOP DETAIL**



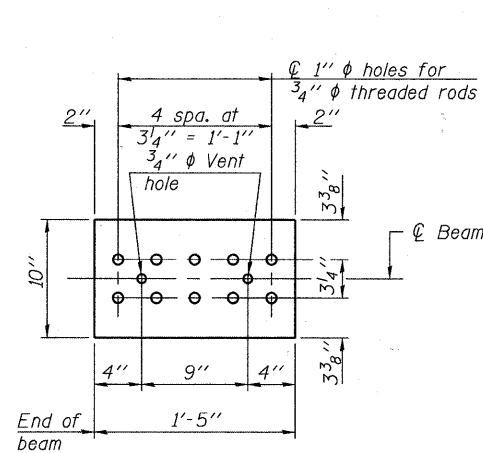
**BAR G1**



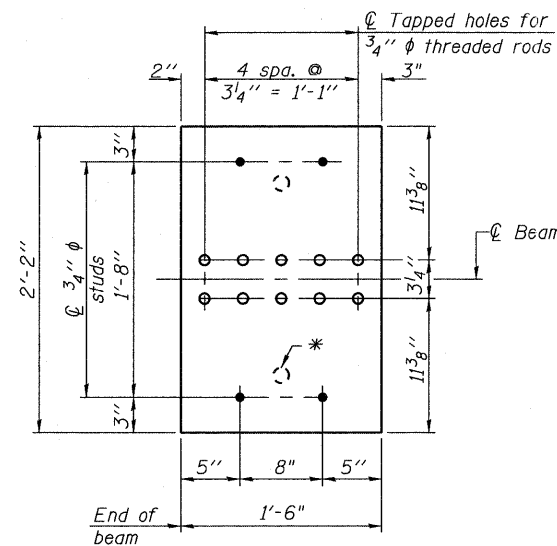
**BAR G2**



**BAR G4**



**TOP PLATE**



**BOTTOM PLATE**

\* See bearing details for pintle hole locations when required.

**BILL OF MATERIAL**

Item	Unit	Total
Furnishing and Erecting Precast Prestressed Concrete Bulb T-Beams, 72"	Ft.	415.5

FILE NAME = n:\756-204\_lombard - gwt\_bridges\_phase 11\ecdd\_sheets\structural\UPRR\0223122-07-PCC BULB T-BEAM DETAILS IL.dgn

PBT-4-72D

7-1-10

**Bollinger, Lach & Associates, Inc.**  
 ITASCA, ILLINOIS

USER NAME = gonzo10	DESIGNED SRT	REVISD -
PLOT SCALE =	CHECKED JJI	REVISD -
PLOT DATE = 7/26/2011	DRAWN GM	REVISD -
	CHECKED JJI	REVISD -

**STATE OF ILLINOIS  
 GREAT WESTERN TRAIL  
 UNION PACIFIC RAILROAD**

**72" PPC BULB T-BEAM DETAILS  
 STRUCTURE NO. 022-3122**

SHEET NO. 17 OF 37 SHEETS

F.A. RTE.	SECTION	COUNTY	TOTAL SHEETS	SHEET NO.
	06-00151-00-BR		201	97
			CONTRACT NO. 63568	
ILLINOIS FED. AID PROJECT				