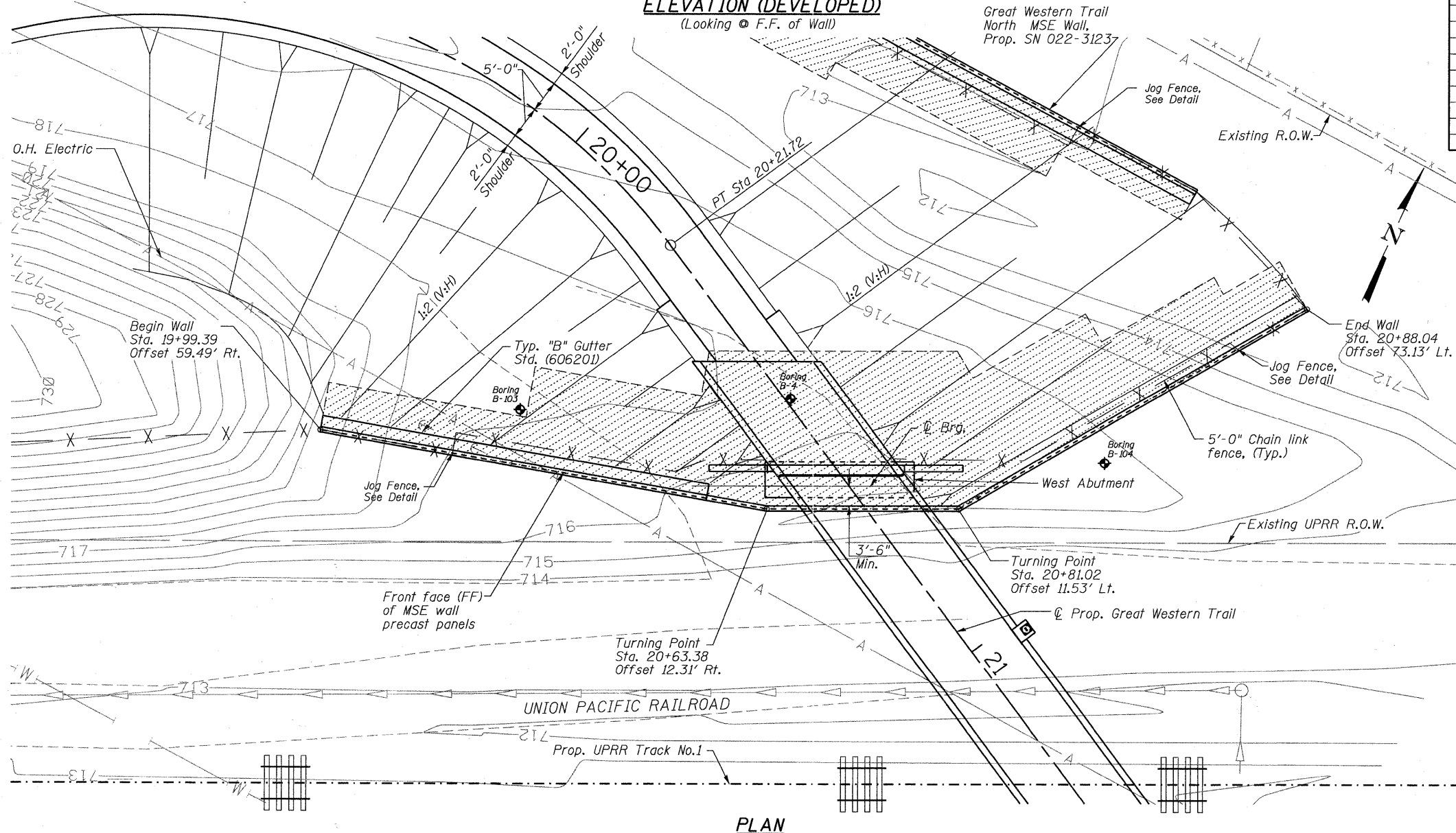


Note: Wall offsets are measured from the  $\odot$  Great Western Trail to the front face of precast panels.

**ELEVATION (DEVELOPED)**

(Looking  $\odot$  F.F. of Wall)



**PLAN**

**BILL OF MATERIAL**

ITEM	UNIT	TOTAL
Structure Excavation	Cu. Yd.	315
Mechanically Stabilized Earth Retaining Wall	Sq. Ft.	2,764
Anti-Graffiti Protection System	Sq. Ft.	2,341
Form Liner Textured Surface, Special	Sq. Ft.	2,341

- Notes:
1. See Special Provisions for Mechanically Stabilized Earth Retaining Wall for design and construction requirements.
  2. Cast-in-place concrete and reinforcing steel, epoxy coated, required for coping will be included in payment for Mechanically Stabilized Earth Retaining Wall, see Special Provisions.
  3. Mechanically Stabilized Earth retaining wall supplier to coordinate location and lengths of soil reinforcement with light pole, conduit, and unit duct locations shown on Lighting Plans to avoid conflicts. Any load transfer system required shall be detailed and shown on Mechanically Stabilized Earth retaining wall Shop Drawings.
  4. Sonotubes shall be installed by Contractor where light pole locations interfere with soil reinforcement.
  5. For Fence and Gutter limits and details, see Roadway Plans.
  6. Contractor shall coordinate MSE retaining wall construction with abutment construction.

FILE NAME = s:\756-004\_lombard - get bridges phase 1\road sheets\structure\UPRR\0223122-026-WEST ABUTMENT MSE WALL PLAN AND ELEVATION.dgn

**Bollinger, Lach & Associates, Inc.**  
ITASCA, ILLINOIS

USER NAME = gonzalo  
PLOT SCALE =  
PLOT DATE = 7/26/2011

DESIGNED SRT  
CHECKED JJI  
DRAWN GM  
CHECKED JJI

REVISED -  
REVISED -  
REVISED -  
REVISED -

**STATE OF ILLINOIS  
GREAT WESTERN TRAIL  
UNION PACIFIC RAILROAD**

**WEST ABUTMENT MSE WALL PLAN AND ELEVATION  
STRUCTURE NUMBER 022-3122**

SHEET NO. 26 OF 37 SHEETS

F.A. RTE.	SECTION	COUNTY	TOTAL SHEETS	SHEET NO.
06-00151-00-BR	DuPAGE	DuPAGE	201	106
CONTRACT NO. 63568				

ILLINOIS FED. AID PROJECT