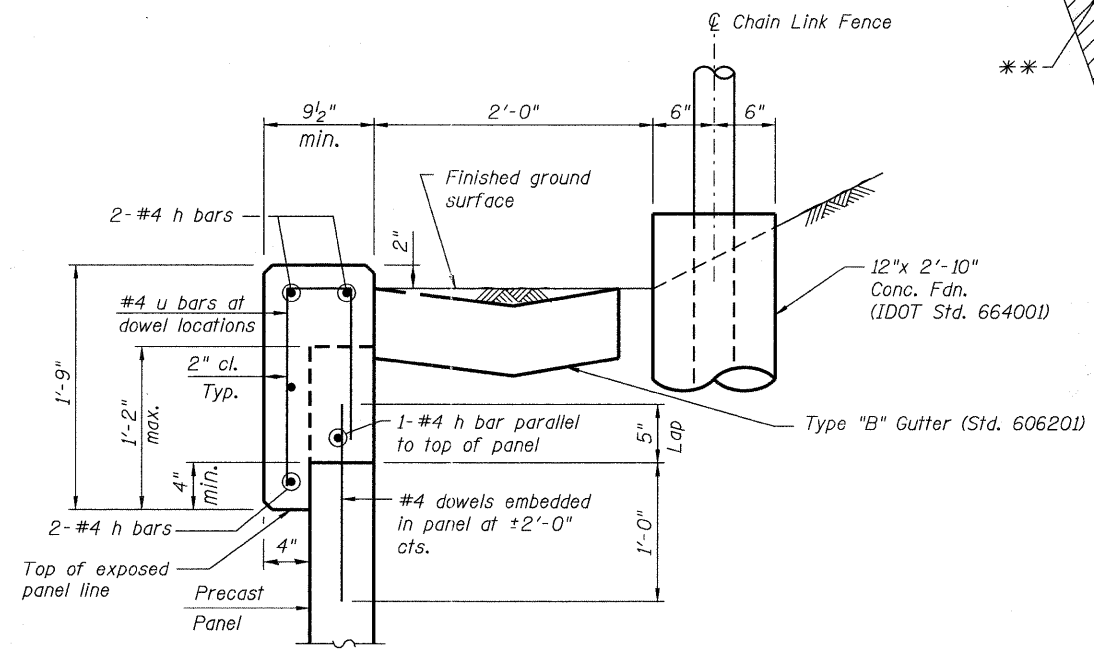


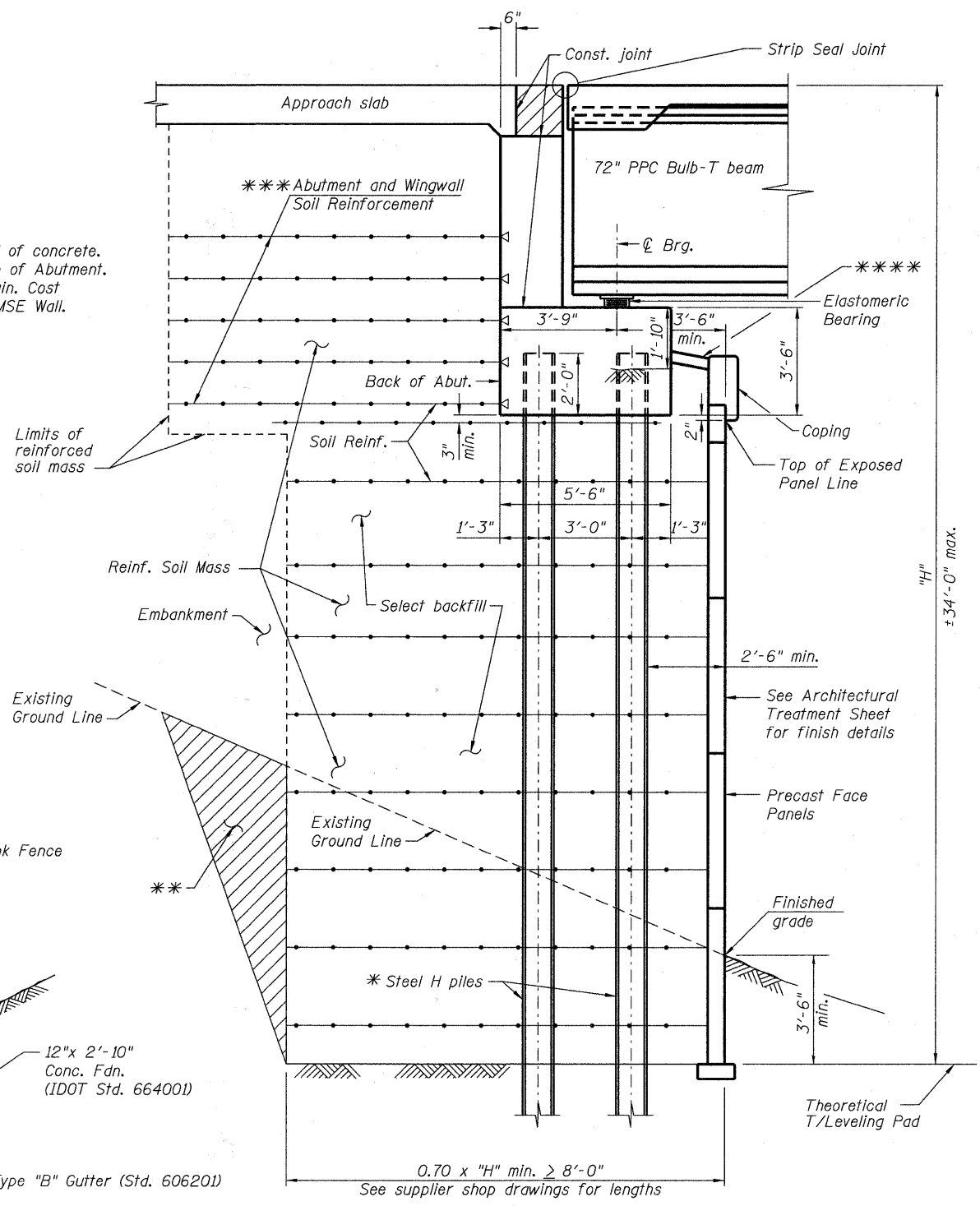
TYP. SECTION THRU MSE WALL

** Backfill overexcavation w/same material as used for select fill



SECTION THRU TOP OF MSE WALL

**** Seal with 4" of concrete. P.JF on face of Abutment. Slope to drain. Cost included in MSE Wall.



SECTION THRU WEST ABUTMENT

* Piles shall be driven prior to placement of reinforced select fill and coated with bitumen coating from the bottom of the select fill to 1" above the base of the abutment. The cost of the bitumen coating shall be included with the cost of the Furnishing Piles.

** Overexcavation beyond the limits of Structure Excavation. This area not measured for payment. Backfill overexcavation with same material as used for select fill.

*** The MSE Wall supplier shall design the abutment and wingwall soil reinforcement to resist a horizontal force of 2 kips/foot of abutment. Contractor shall coordinate abutment construction with construction of MSE Retaining Wall.

FILE NAME = w:\756-004_lombard - gwt_bridges_phase 1\load_sheets\structural\IPRR\0223122-027-WEST ABUTMENT MSE WALL DETAILS.dgn

Bollinger, Lach & Associates, Inc.
ITASCA, ILLINOIS

USER NAME = gonzo	DESIGNED SRT	REVISD -
PLOT SCALE =	CHECKED JJI	REVISD -
PLOT DATE = 7/26/2011	DRAWN GM	REVISD -
	CHECKED JJI	REVISD -

**STATE OF ILLINOIS
GREAT WESTERN TRAIL
UNION PACIFIC RAILROAD**

**WEST ABUTMENT MSE WALL DETAILS
STRUCTURE NUMBER 022-3122**

SHEET NO. 27 OF 37 SHEETS

F.A. RTE.	SECTION	COUNTY	TOTAL SHEETS	SHEET NO.
	06-00151-00-BR	DuPAGE	201	107
			CONTRACT NO. 63568	

ILLINOIS FED. AID PROJECT