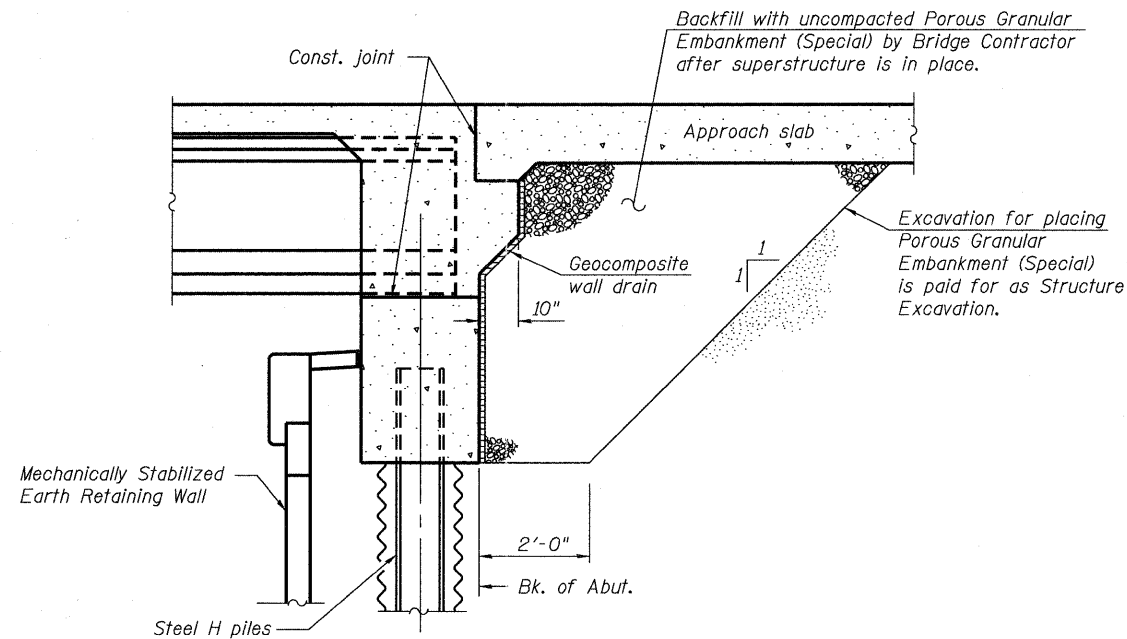


TOTAL BILL OF MATERIAL

ITEM	UNIT	SUPER	SUB	TOTAL
Porous Granular Embankment, Special	Cu. Yd.	-	51	51
Protective Coat	Sq. Yd.	226	-	226
Structure Excavation	Cu. Yd.	-	754	754
Concrete Structures	Cu. Yd.	-	50.1	50.1
Concrete Superstructure	Cu. Yd.	88.3	-	88.3
Concrete Superstructure, Special	Cu. Yd.	22.5	-	22.5
Furnishing And Erecting Precast Prestressed Concrete I-Beams, 48 In.	Foot	393	-	393
Reinforcement Bars, Epoxy Coated	Pound	19,180	4,380	23,560
Bar Splicers	Each	34	-	34
Parapet Railing	Foot	280.8	-	280.8
Furnishing Steel Piles HP12x63	Foot	-	462	462
Driving Piles	Foot	-	462	462
Test Pile Steel HP12x63	Each	-	2	2
Pile Shoes	Each	-	8	8
Name Plates	Each	2	-	2
Geocomposite Wall Drain	Sq. Yd.	-	30	30
Mechanically Stabilized Earth Retaining Wall	Sq. Ft.	-	5,051	5,051
Anti-Graffiti Protection System	Sq. Ft.	1,830	4,213	6,043
Form Liner Textured Surface, Special	Sq. Ft.	1,092	4,165	5,257
Permanent Steel Sheet Piling	Sq. Ft.	-	3,980	3,980
Architectural Lettering	L. Sum	0.5	-	0.5



SECTION THRU INTEGRAL ABUTMENT

(Horiz. dim. @ Rt. L's)
(See Sheet 24 of 29 for additional details)

ST. CHARLES ROAD
BUILT 20__ BY
VILLAGE OF LOMBARD
SEC. 06-00151-00-BR
STA. 24+82.21
STR. NO. 022-3121 LOADING H20

2-Required

NAME PLATE

See Std. 515001

GENERAL NOTES

- Alternative bridge types not allowed.
- Reinforcement bars shall conform to the requirements of ASTM A 706 Gr 60. See Special Provisions.
- Reinforcement bars designated (E) shall be epoxy coated.
- The embankment configuration shown shall be the minimum that must be placed and compacted prior to construction of the abutments.
- Anti-Graffiti Protection System shall be applied at all locations "Form Liner Textured Surface Coating, Special" is applied to. See Sheet 18.
- Exterior faces of fascia beams shall receive Anti-Graffiti Protection System for a distance equal to 10' from the face of abutments.
- Slipforming of the parapets is not allowed.
- See Sheets 43 thru 45 of 201 for fence details.

INDEX OF SHEETS

SHEET NO.	DESCRIPTION
1	General Plan
2	Total Bill of Material, General Notes, Index of Sheets & Name Plate
3	Top of Slab Elevations I
4	Top of Slab Elevations II
5	Top of Approach Slab Elevations
6	Superstructure Plan & Cross Section
7	Abutment Diaphragm and Details
8	Parapet Elevation, Superstructure Details & Bar List
9	Approach Slab Details I
10	Approach Slab Details II
11	Approach Slab Details III
12	Parapet Railing Details
13	Framing Plan, Beam Tables & Bracing
14	48" PPC I-Beam
15	48" PPC I-Beam Details
16	West Abutment- Plan, Elevation, Section
17	East Abutment- Plan, Elevation, Section
18	Architectural Treatment
19	H-Piles
20	Bar Splicer Assembly
21	West Abutment MSE Plan and Elevation, Bill of Material
22	East Abutment MSE Plan, Bill of Material
23	East Abutment MSE & Sheet Pile Wall Elevation
24	MSE Wall Sections and Foundation Details
25	Sheet Pile Wall Details
26	Boring Logs B-6 and B-7
27	Boring Logs B-7 and 10B
28	Boring Logs 109 and 110
29	Boring Logs 213 and 214

FILE NAME = \\N756-004_Lombard - g* bridges phase 11\cadd sheets\structural\ST CHARLES\0223121-002-CenNotes\B11.dgn



USER NAME = gonzalo	DESIGNED SRT	REVISED -
PLOT SCALE =	CHECKED JJI	REVISED -
PLOT DATE = 7/26/2011	DRAWN GM	REVISED -
	CHECKED JJI	REVISED -

**STATE OF ILLINOIS
GREAT WESTERN TRAIL
ST. CHARLES ROAD**

**GENERAL NOTES, TOTAL BILL OF MATERIAL AND INDEX OF SHEETS
STRUCTURE NUMBER 022-3121**

SHEET NO. 2 OF 29 SHEETS

F.A. RTE.	SECTION	COUNTY	TOTAL SHEETS	SHEET NO.
	06-00151-00-BR	DuPAGE	201	119
				CONTRACT NO. 63568
ILLINOIS FED. AID PROJECT				