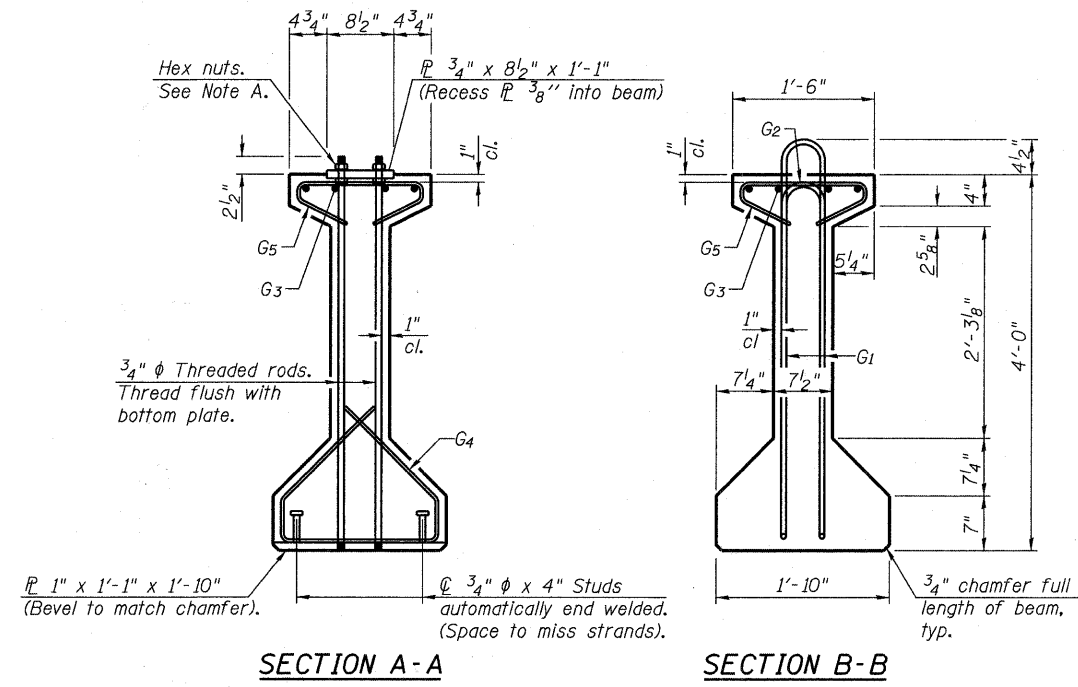


ELEVATION OF BEAM
(Showing reinforcement & dimensions)

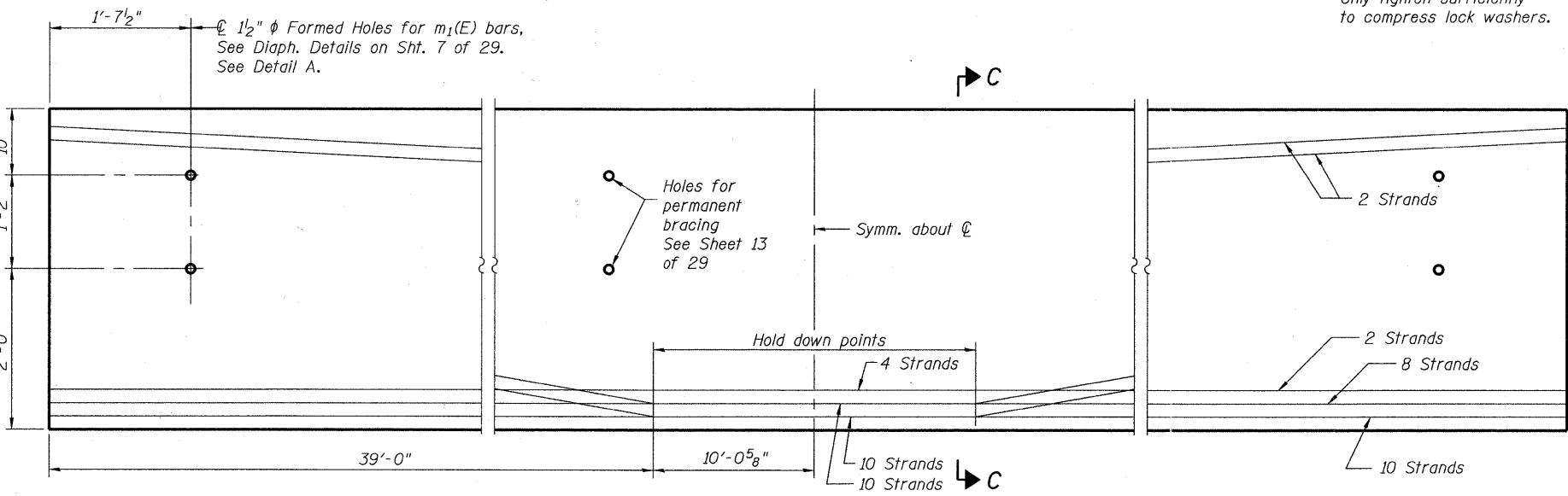
* 3 spaces at 3" = 9".
** 4-3/4" φ threaded dowel rods at 3" cts., Each Face.

Note A:
Hex nuts (top and bottom) with lock washers (top). Only tighten sufficiently to compress lock washers.

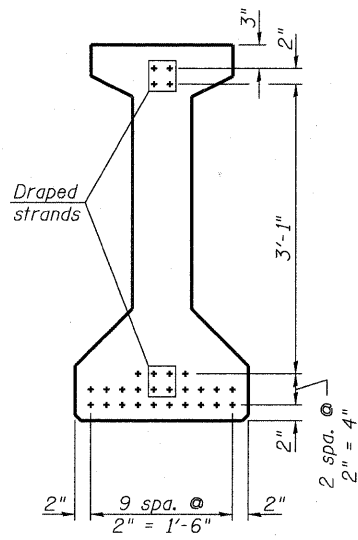


SECTION A-A

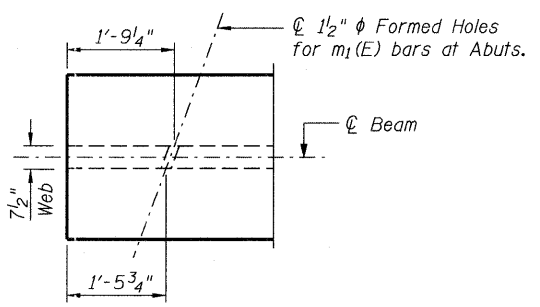
SECTION B-B



ELEVATION OF BEAM
(Showing prestressing steel)



SECTION C-C



DETAIL A

*****BAR LIST
ONE BEAM ONLY**

Bar	No.	Size	Length	Shape
G ₁	154	#4	9'-6"	⊏
G ₂	12	#4	7'-11"	⊏
G ₃	8	#7	50'-10"	⊏
G ₄	38	#3	5'-3"	⊏
G ₅	98	#3	2'-9"	⊏

***For information only

Notes:
See sheet 15 of 29 for additional details and Bill of Material.
Required release strength, f'ci, shall be 5,000 psi.

FILE NAME = w:\756-004_lombard - gwt bridges_phase 11\cadd_sheets\structure\1-CHARLES\0223121-014-48 I-BEAM DETAILS.dgn

PI-4-48

7-1-10

Bollinger, Lach & Associates, Inc.
TRASCA, ILLINOIS

USER NAME = gonzo	DESIGNED SRT SRT	REVISED -
PLOT SCALE =	CHECKED JJI JJI	REVISED -
PLOT DATE = 7/26/2011	DRAWN GM GM	REVISED -
	CHECKED JJI JJI	REVISED -

**STATE OF ILLINOIS
GREAT WESTERN TRAIL
ST. CHARLES ROAD**

**48" PPC I-BEAM
STRUCTURE NO. 022-3121**
SHEET NO. 14 OF 29 SHEETS

F.A. RTE.	SECTION	COUNTY	TOTAL SHEETS	SHEET NO.
	06-00151-00-BR		201	131
			DUPAGE	CONTRACT NO. 63568
ILLINOIS FED. AID PROJECT				