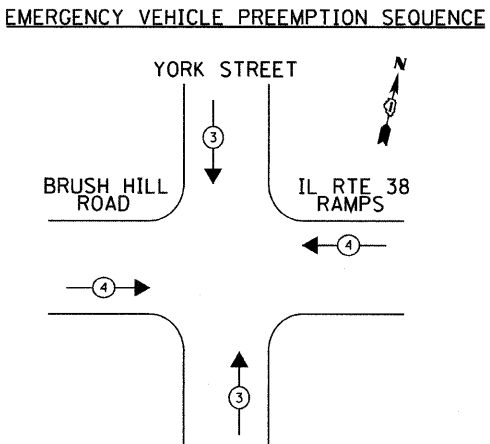
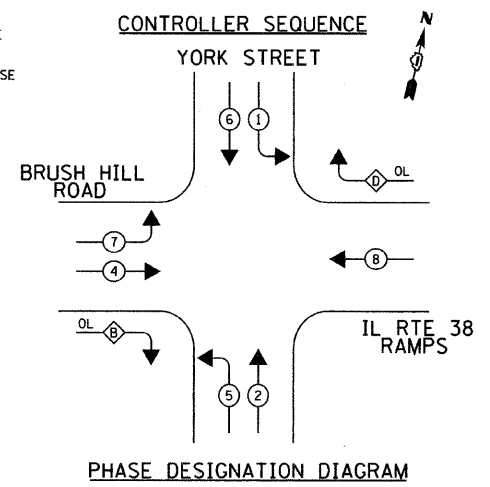
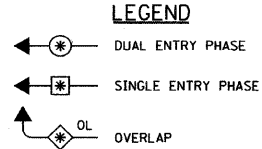
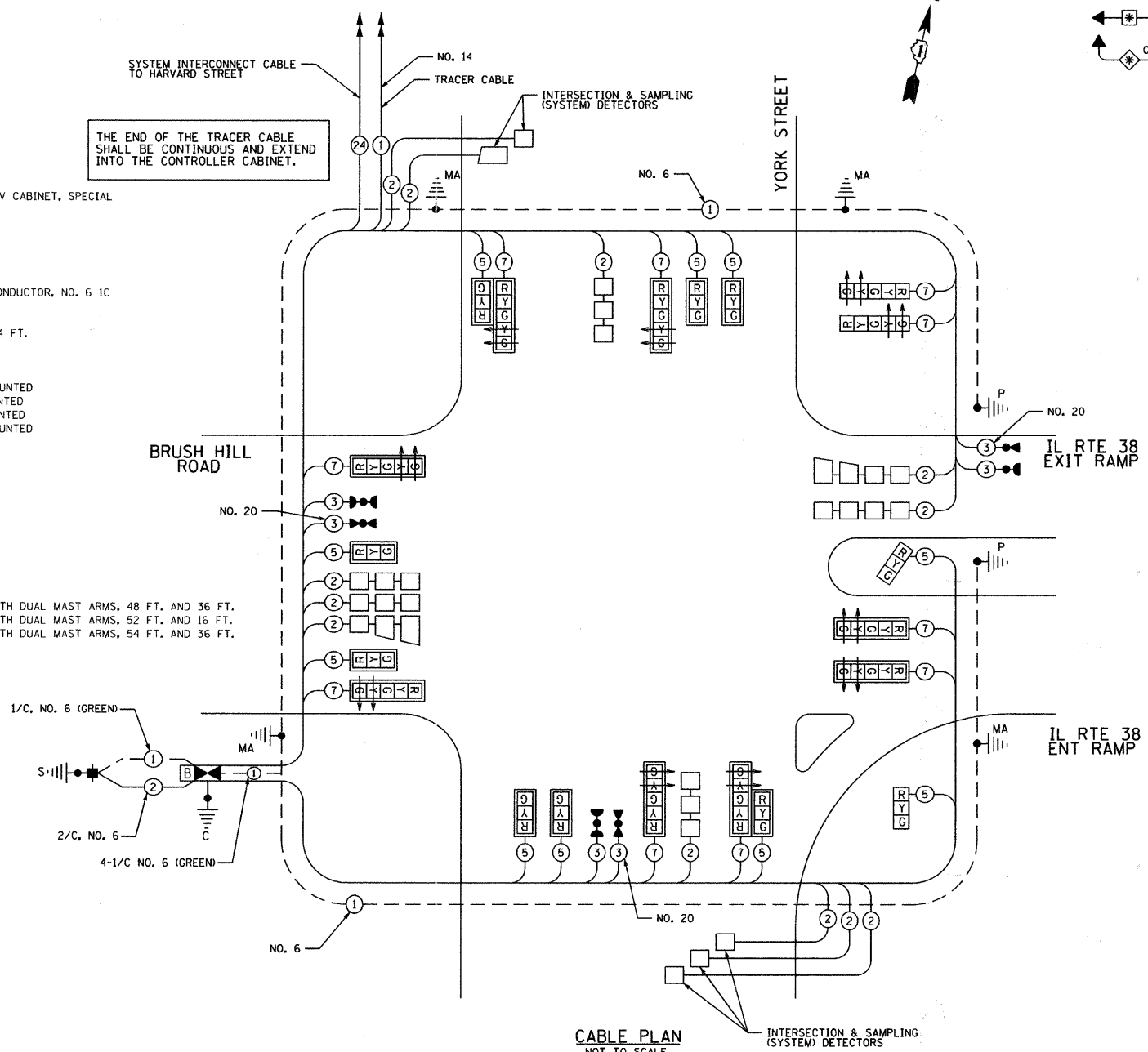


SCHEDULE OF QUANTITIES

QUANTITY	UNIT	ITEM
16	SO. FT.	SIGN PANEL-TYPE 1
20	SO. FT.	SIGN PANEL-TYPE 2
949	FOOT	CONDUIT IN TRENCH, 2" DIA., GALVANIZED STEEL
479	FOOT	CONDUIT IN TRENCH, 1 1/2" DIA., GALVANIZED STEEL
52	FOOT	CONDUIT IN TRENCH, 3" DIA., GALVANIZED STEEL
20	FOOT	CONDUIT IN TRENCH, 4" DIA., GALVANIZED STEEL
183	FOOT	CONDUIT PUSHED, 2" DIA., GALVANIZED STEEL
563	FOOT	CONDUIT PUSHED, 4" DIA., GALVANIZED STEEL
5	EACH	HANDHOLE
6	EACH	HEAVY-DUTY HANDHOLE
2	EACH	DOUBLE HANDHOLE
1485	FOOT	TRENCH AND BACKFILL FOR ELECTRICAL WORK
1	EACH	FULL-ACTUATED DOUBLE DOOR CONTROLLER AND TYPE IV CABINET, SPECIAL
1131	FOOT	ELECTRIC CABLE IN CONDUIT, SIGNAL NO. 14 3C
2108	FOOT	ELECTRIC CABLE IN CONDUIT, SIGNAL NO. 14 5C
2363	FOOT	ELECTRIC CABLE IN CONDUIT, SIGNAL NO. 14 7C
1131	FOOT	ELECTRIC CABLE IN CONDUIT, SIGNAL NO. 20 3C
3227	FOOT	ELECTRIC CABLE IN CONDUIT, LEAD-IN, NO. 14 1 PAIR
443	FOOT	ELECTRIC CABLE IN CONDUIT, SERVICE, NO. 6 2C
1519	FOOT	ELECTRIC CABLE IN CONDUIT, EQUIPMENT GROUNDING CONDUCTOR, NO. 6 1C
1	EACH	TRAFFIC SIGNAL POST, 14 FT.
1	EACH	TRAFFIC SIGNAL POST, 18 FT.
1	EACH	STEEL COMBINATION MAST ARM ASSEMBLY AND POLE, 54 FT.
12	FOOT	CONCRETE FOUNDATION, TYPE A
4	FOOT	CONCRETE FOUNDATION, TYPE C
61	FOOT	CONCRETE FOUNDATION, TYPE E 36-INCH DIAMETER
8	EACH	SIGNAL HEAD, L.E.D., 1-FACE, 3-SECTION, MAST ARM MOUNTED
2	EACH	SIGNAL HEAD, L.E.D., 1-FACE, 3-SECTION, BRACKET MOUNTED
1	EACH	SIGNAL HEAD, L.E.D., 2-FACE, 5-SECTION, BRACKET MOUNTED
8	EACH	SIGNAL HEAD, L.E.D., 1-FACE, 5-SECTION, MAST ARM MOUNTED
16	EACH	TRAFFIC SIGNAL BACKPLATE, LOUVERED, ALUMINUM
12	EACH	INDUCTIVE LOOP DETECTOR
1061	FOOT	DETECTOR LOOP, TYPE 1
3	EACH	LIGHT DETECTOR
1	EACH	LIGHT DETECTOR AMPLIFIER
1	EACH	TEMPORARY TRAFFIC SIGNAL INSTALLATION
1	EACH	REMOVE EXISTING TRAFFIC SIGNAL EQUIPMENT
10	EACH	REMOVE EXISTING HANDHOLE
8	EACH	REMOVE EXISTING CONCRETE FOUNDATION
1	EACH	SERVICE INSTALLATION- GROUND MOUNTED
1	EACH	UNINTERRUPTABLE POWER SUPPLY
1	EACH	TEMPORARY TRAFFIC SIGNAL TIMING
1	EACH	STEEL COMBINATION MAST ARM ASSEMBLY AND POLE WITH DUAL MAST ARMS, 48 FT. AND 36 FT.
1	EACH	STEEL COMBINATION MAST ARM ASSEMBLY AND POLE WITH DUAL MAST ARMS, 52 FT. AND 16 FT.
1	EACH	STEEL COMBINATION MAST ARM ASSEMBLY AND POLE WITH DUAL MAST ARMS, 54 FT. AND 36 FT.



PROPOSED EMERGENCY VEHICLE PREEMPTORS

EMERGENCY VEHICLE PREEMPTOR	3	4
MOVEMENT	↑	←

100% TRAFFIC SIGNAL INSTALLATION ELECTRICAL SERVICE REQUIREMENTS

TYPE	NO. LAMPS	x WATTAGE		x % OPERATION	TOTAL WATTAGE
		INCAND.	LED		
SIGNAL (RED)	20	135	17	0.50	170
(YELLOW)	20	135	25	0.25	125
(GREEN)	20	135	15	0.25	75
ARROW	20	135	12	0.10	24
PED. SIGNAL	0	90	25	1.00	0
CONTROLLER	1	100	100	1.00	100
ILLUM. SIGN	0	64		0.05	0
TOTAL*					494

ENERGY COSTS TO:

ILLINOIS DEPARTMENT OF TRANSPORTATION
201 W. CENTER COURT
SCHAUMBURG, IL 60196

ENERGY SUPPLY CONTACT:
PHONE:
COMPANY: COMMONWEALTH EDISON COMPANY

- NOTES:**
- ALL TRAFFIC SIGNAL HEADS SHALL BE ALL BLACK.
 - ALL OTHER TRAFFIC SIGNAL EQUIPMENT SHALL BE PAINTED COLONIAL BROWN IN ACCORDANCE WITH CITY OF ELMHURST STANDARDS.
 - ALL EVP EQUIPMENT SHALL BE OPTICOM.

THE TRAFFIC SIGNAL CONTROL EQUIPMENT FOR THIS PROJECT SHALL BE "ECONOLITE" TO MATCH THE EXISTING ADJACENT SYSTEM.

DATE: _____ BY: _____

PLAN NO. _____

DATE: _____ BY: _____

PROFILE NO. _____

DATE: _____ BY: _____

PROFILE NO. _____

FILE NAME = g:\CH08\0007\Road\Phase 2\Sheets\DX0007

USER NAME = jmgolemba

DESIGNED - KB

DRAWN - AJP

CHECKED - KMM

DATE - 7/4/2011

REVISIONS:

REVISED -

REVISED -

REVISED -

REVISED -

PLOT SCALE = 50.0000' / 1"

PLOT DATE = 8/22/2011

STATE OF ILLINOIS
DEPARTMENT OF TRANSPORTATION

YORK STREET AT IL RTE 38 RAMP/BRUSH HILL ROAD
PROPOSED TRAFFIC SIGNAL CABLE PLAN,
SEQUENCE OF OPERATIONS AND SUMMARY OF QUANTITIES

SCALE: NONE SHEET NO. 40 OF 85 SHEETS STA. TO STA.

F.A.U. RTE.	SECTION	COUNTY	TOTAL SHEETS	SHEET NO.
2678	09-00171-00-CH	DUPAGE	85	40

CONTRACT NO. 63610

FED. ROAD DIST. NO. 7 ILLINOIS FED. AID PROJECT