

COUNTY HIGHWAY	F.A.P. RTE.	SECTION	COUNTY	TOTAL SHEETS	SHEET NO.
4	364	07-00184-12-CH	DUPAGE	49	1
			ILLINOIS	CONTRACT NO. 63611	

D-91-722-09



STATE OF ILLINOIS
DEPARTMENT OF TRANSPORTATION
DIVISION OF HIGHWAYS
**PLANS FOR PROPOSED
FEDERAL AID HIGHWAY**
FAP 364 ROSELLE ROAD (CH4)
AT WALNUT STREET
INTERSECTION IMPROVEMENT
SECTION: 07-00184-12-CH
PROJECT NO. HSIP-9003(838)
DUPAGE COUNTY
C-91-722-09

FOR INDEX OF SHEETS, SEE SHEET NO. 2
FOR LIST OF HIGHWAY STANDARDS, SEE SHEET NO. 2
FOR SUMMARY OF QUANTITIES, SEE SHEET NO. 4

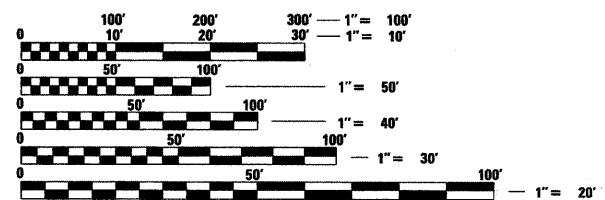
DESIGN DESIGNATION

ROSELLE ROAD
FUNCTION CLASSIFICATION: SRA (URBAN MINOR ARTERIAL)
DESIGN SPEED = 40 MPH
POST SPEED = 35 MPH
WALNUT ST/WALNUT CT
FUNCTION CLASSIFICATION: URBAN COLLECTOR/LOCAL RESIDENTIAL
DESIGN SPEED = 30 MPH
POST SPEED = 30 MPH

TRAFFIC DATA

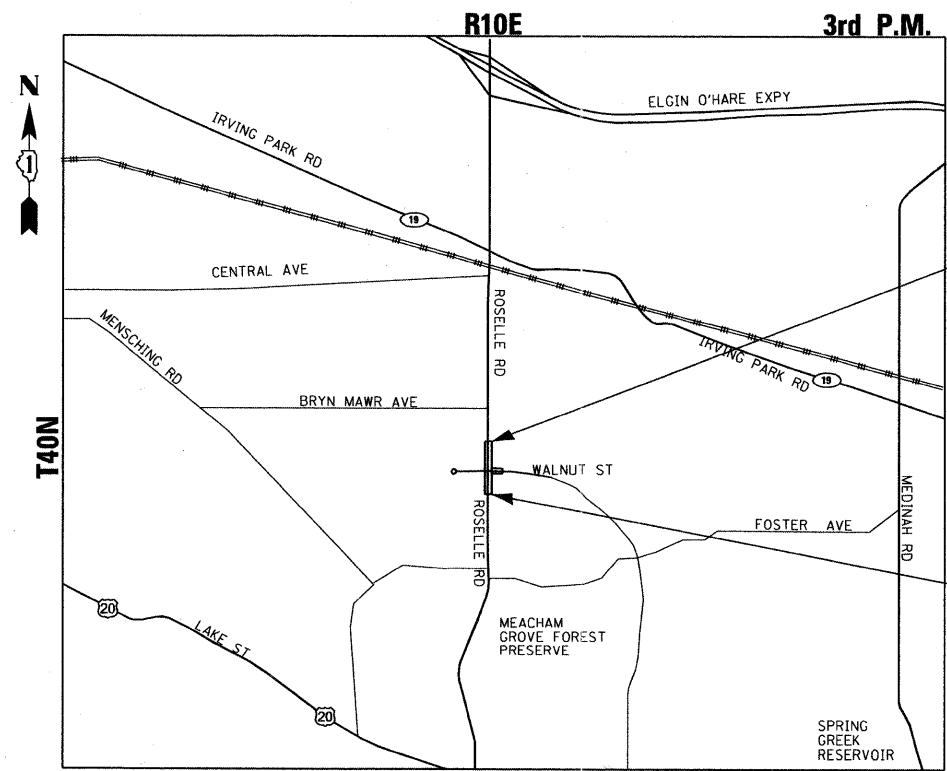
ROSELLE RD
2010 ADT = 23,100
2050 ADT = 25,500
WALNUT STREET
2010 ADT = 1830
2050 ADT = 2,050

IMPROVEMENT LOCATED WITHIN
VILLAGE OF ROSELLE



FULL SIZE PLANS HAVE BEEN PREPARED USING STANDARD
ENGINEERING SCALES. REDUCED SIZED PLANS WILL NOT
CONFORM TO STANDARD SCALES. IN MAKING MEASUREMENTS
ON REDUCED PLANS, THE ABOVE SCALES MAY BE USED.

J.U.L.I.E.
JOINT UTILITY LOCATION INFORMATION FOR EXCAVATION
1-800-892-0123
OR 811



PROJECT ENDS
STA. 113 + 70.3

PROJECT BEGINS
STA. 105 + 83

SCALE: NTS
BLOOMINGDALE TOWNSHIP

GROSS LENGTH OF PROJECT = 787.3 FT = 0.15 MILE
NET LENGTH OF PROJECT = 787.3 FT = 0.15 MILE

PROGRAM AND OFFICE ENGINEER: CHARLES F. RIDDLE, P.E. (847) 705-4406, SCHAUBURG, IL

CONTRACT NO. 63611

STATE OF ILLINOIS
DEPARTMENT OF TRANSPORTATION
DIVISION OF HIGHWAYS

APPROVED 5-18 20 11
Charles F. Riddle
COUNTY OF DUPAGE, COUNTY ENGINEER

PASSED May 29 20 11
C. Felt
DISTRICT 1 ENGINEER OF LOCAL ROAD & STREETS

RELEASING FOR BID
BASED ON
LIMITED REVIEW MAY 25 20 11
Diane M. O'Keefe
DEPUTY DIRECTOR OF HIGHWAYS, REGION 1 ENGINEER

**PRINTED BY THE AUTHORITY
OF THE STATE OF ILLINOIS**

MILLENNIA PROFESSIONAL SERVICES
THOMAS V. NGO, P.E.
* 062-058379

Thomas V. Ngo
DATE: 5/18/2011
SIGNATURE AND SEAL APPLIES TO DRWG.

200 22ND Street, Suite 216, Lombard, IL 60148
630.705.0110 voice, 630.839.2566 fax
www.mps-il.com

MILLENNIA PROFESSIONAL SERVICES