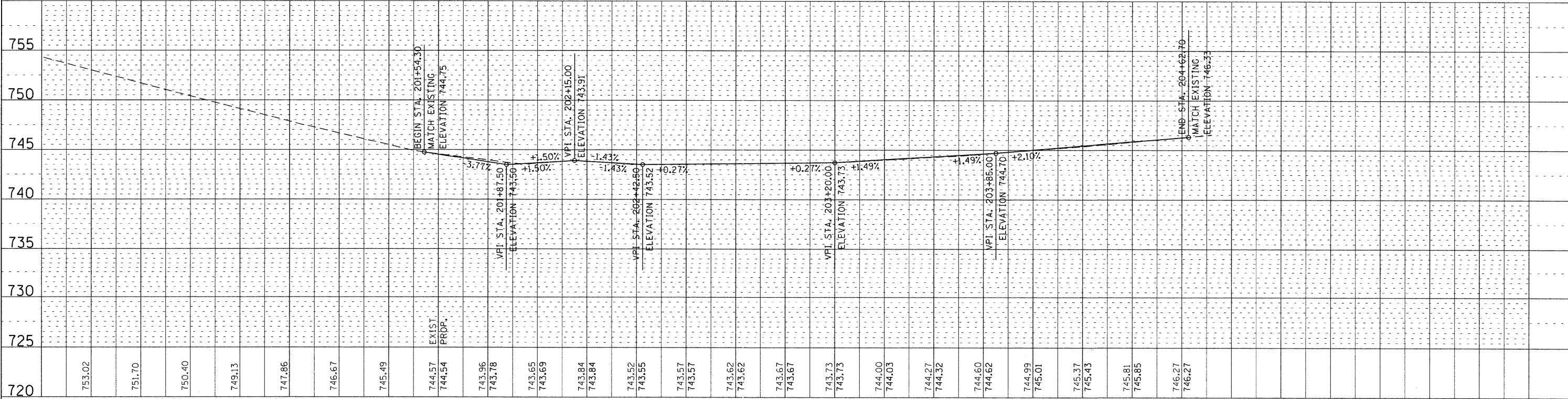
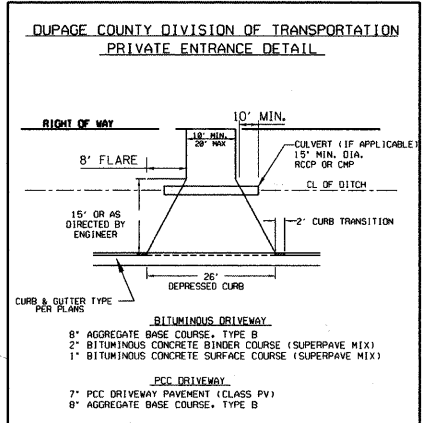
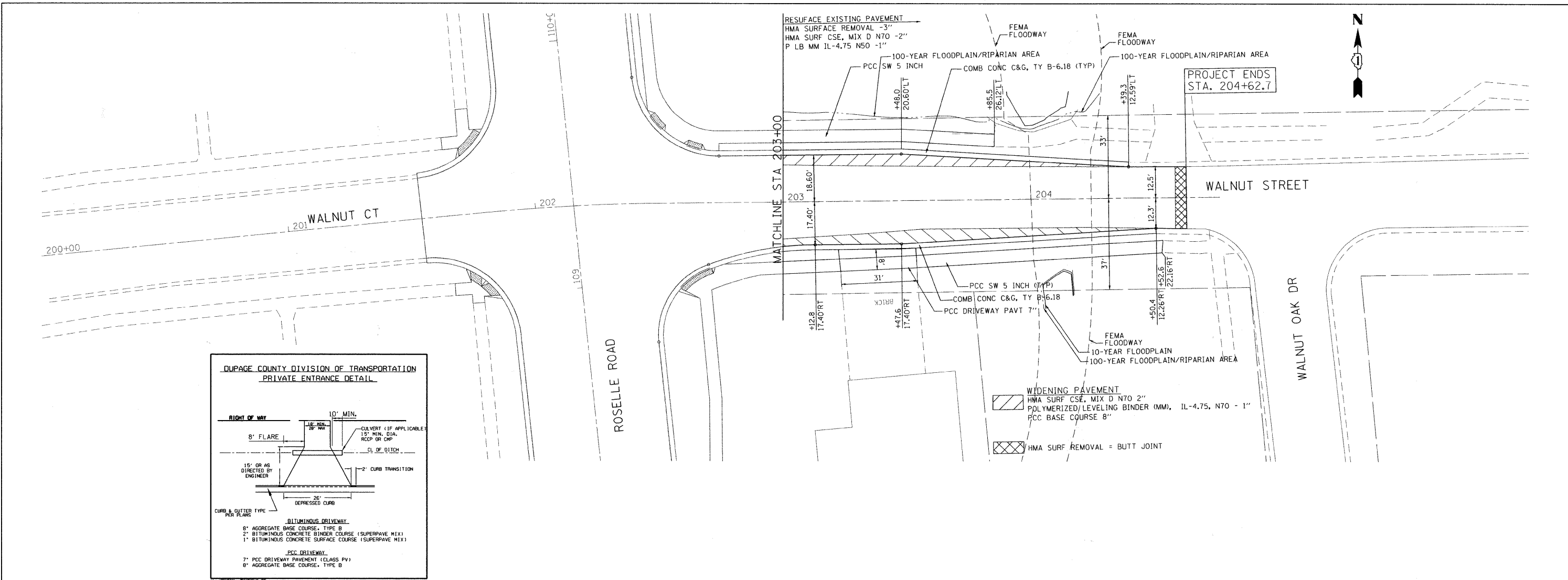


PLAN	SURVEYED	BY	DATE
NOTE BOOK	PLOTTED		
NO.	CHECKED		
	BY		
	DATE		

PROFILE	SURVEYED	BY	DATE
NOTE BOOK	PLOTTED		
NO.	CHECKED		
	BY		
	DATE		

FILE NAME = P:\2010\ME\0215_Roselle_DPCDOT\CADD\Shts\Roselle-sht-PP03.dgn
 PLOT SCALE = 20.0000' / 1" IN.
 USER NAME = Millenia Professional Services



DESIGNED - TVN	REVISED -	DUPAGE COUNTY DEPARTMENT OF TRANSPORTATION ROSELLE RD. & WALNUT ST. INTERSECTION IMPROVEMENTS SCALE: 1"=20' SHEET NO. 3 OF 3 SHEETS STA. 203+00 TO STA. 204+62.7	PROPOSED PLAN & PROFILE F.A.P. RTE. 364 SECTION 07-00184-12-CH COUNTY DUPAGE TOTAL SHEETS 49 SHEET NO. 13 CONTRACT NO. 63611 FED. ROAD DIST. NO. 1 ILLINOIS FED. AID PROJECT P:\2010\ME\0215_Roselle_DPCDOT\CADD\Shts\Roselle-sht-PP03.dgn
DRAWN - TVN	REVISED -		
CHECKED - RPD	REVISED -		
DATE - 8/15/2011	REVISED -		

200 22ND Street, Suite 216, Lombard, IL 60148
 630.705.0110 voice, 630.839.2566 fax
 WWW.MPS-IL.COM