

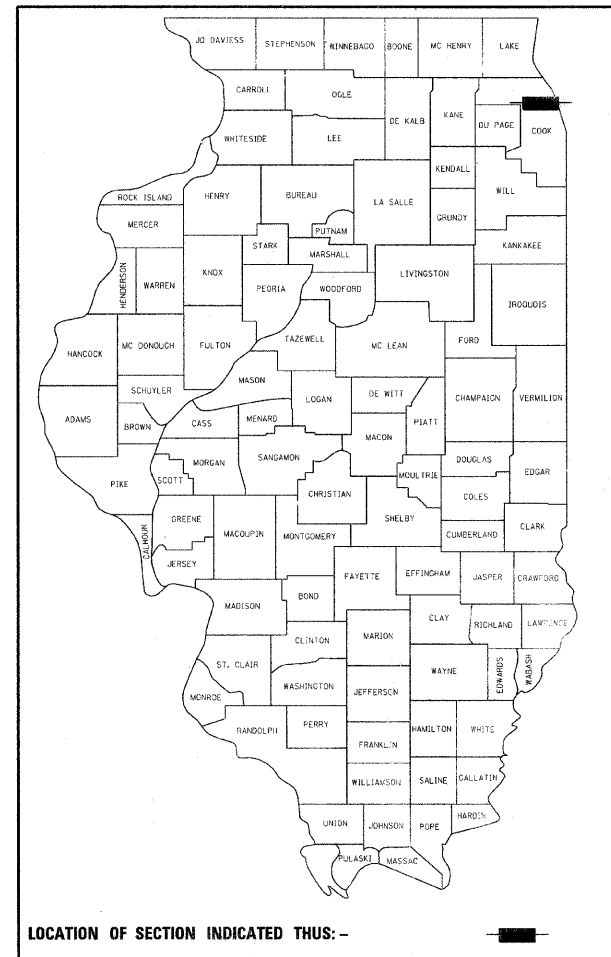
F.A.U. RTE.	SECTION	COUNTY	TOTAL SHEETS	SHEET NO.
1284	07-00164-00-RS	COOK	34	1
ILLINOIS CONTRACT NO. 63612				

SHEET INDEX

- 1 TITLE SHEET
- 2 GENERAL NOTES, LEGENDS, AND ABBREVIATIONS
- 3 SUMMARY OF QUANTITIES, HIGHWAY STANDARDS, AND DISTRICT ONE STANDARD DETAILS
- 4 TYPICAL SECTIONS AND HMA MIXTURE REQUIREMENTS
- 5 ALIGNMENT AND TIES
- 6-10 SITE PLAN - EXISTING & PROPOSED CONDITIONS
- 11-13 EROSION CONTROL, PAVEMENT MARKING, AND SIGNAGE PLAN
- 14-16 BIKE TRAIL & STORM SEWER PROFILE
- 17-18 VILLAGE STANDARD DETAILS
- 19-23 DISTRICT 1 STANDARD DETAILS
- 24-34 CROSS SECTIONS

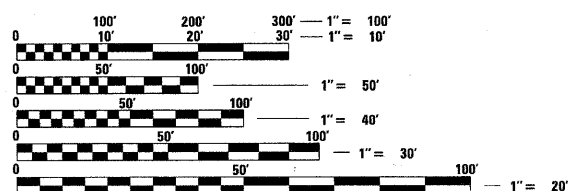
STATE OF ILLINOIS
DEPARTMENT OF TRANSPORTATION
PLANS FOR PROPOSED FEDERAL AID HIGHWAY

FAU ROUTE 1284 (WEST LAKE AVENUE)
CENTENNIAL BIKE TRAIL - SEGMENT #1
PFINGSTEN ROAD TO PICKWICK AVENUE
SECTION: 07-00164-01-RS
PROJECT: TE-00D1 (841)
VILLAGE OF GLENVIEW
COOK COUNTY
JOB # C-91-275-11



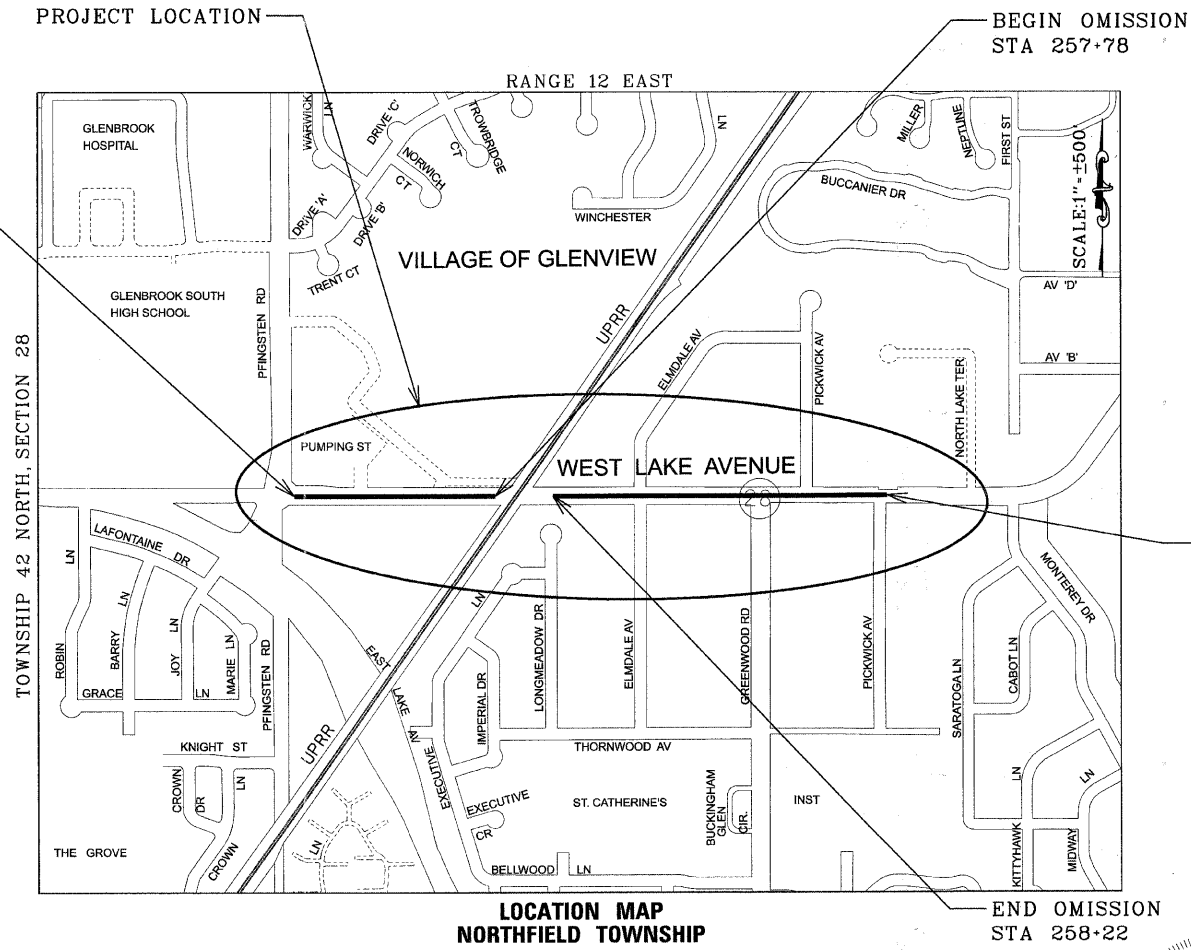
TRAFFIC DATA

WEST LAKE AVENUE
 POSTED SPEED LIMIT - 35MPH
 2009 ADT - 6,800
 FUNCTIONAL CLASSIFICATION - COLLECTOR-URBAN

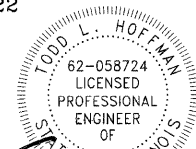


FULL SIZE PLANS HAVE BEEN PREPARED USING STANDARD ENGINEERING SCALES. REDUCED SIZED PLANS WILL NOT CONFORM TO STANDARD SCALES. IN MAKING MEASUREMENTS ON REDUCED PLANS, THE ABOVE SCALES MAY BE USED.

J.U.L.I.E.
JOINT UTILITY LOCATION
INFORMATION FOR EXCAVATION
1-800-892-0123
OR 811



GROSS LENGTH - 3,392 LF = 0.64 MILE
 NET LENGTH - 3,348 LF = 0.63 MILE



Todd Hoffman
 PROJECT MANAGER
 LICENSE EXPIRES 11-30-11

STATE OF ILLINOIS
DEPARTMENT OF TRANSPORTATION
DIVISION OF HIGHWAYS

APPROVED June 30, 2011
[Signature]
 VILLAGE OF GLENVIEW - VILLAGE ENGINEER

PASSED July 15, 2011
[Signature]
 DISTRICT 1 ENGINEER OF LOCAL ROADS AND STREETS

RELEASING FOR BID
 BASED ON LIMITED
 REVIEW July 18, 2011
[Signature]
 DEPUTY DIRECTOR OF
 HIGHWAYS, REGION 1 ENGINEER

PRINTED BY THE AUTHORITY
OF THE STATE OF ILLINOIS

COPYRIGHT © 2011 BY EASTMAN KODAK COMPANY
 STATE OF ILLINOIS - PROFESSIONAL DESIGN FIRM
 LICENSE NO. - 384-001
 PROGRAM AND OFFICE ENGINEER: CHARLES F. RIDDLE, P.E. 847-705-4006 SCHAUMBURG, IL
 PROJECT: VILLAGE OF GLENVIEW - CENTENNIAL BIKE TRAIL - VILLAGE OF GLENVIEW, IL