

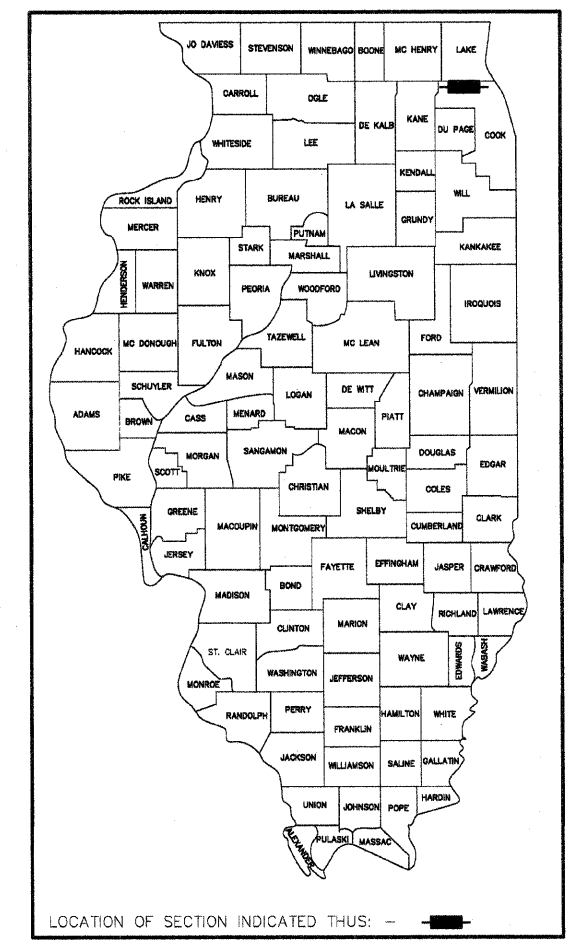
F.A.P. RTE.	SECTION	COUNTY	TOTAL SHEETS	SHEET NO.
	11-00198-00-LS	COOK	6	1
FED. ROAD DIST. NO.		ILLINOIS	CONTRACT NO. 63615	

- INDEX OF SHEETS**
1. TITLE SHEET
 2. GENERAL NOTES
 3. SUMMARY OF QUANTITIES
 4. DEMOLITION PLAN
 5. SITE PLAN/GRADING PLAN
 6. DETAILS

STATE STANDARDS

000001-06 STANDARD SYMBOLS, ABBREVIATION, & PATTERNS
701501-06 URBAN LANE CLOSURE, 2L, 2W, UNDIVIDED
701901-01 TRAFFIC CONTROL DEVICES

STATE OF ILLINOIS
DEPARTMENT OF TRANSPORTATION
DIVISION OF HIGHWAYS
**PLANS FOR PROPOSED
FEDERAL AID HIGHWAY
DAVIS STREET**
FROM PINE AVENUE TO BRISTOL AVENUE
SIDEWALK IMPROVEMENTS
SECTION 11-00198-00-LS
PROJECT: TE -00D1(853)
VILLAGE OF ARLINGTON HEIGHTS
WHEELING TOWNSHIP
COOK COUNTY
JOB NO. C-91-374-11

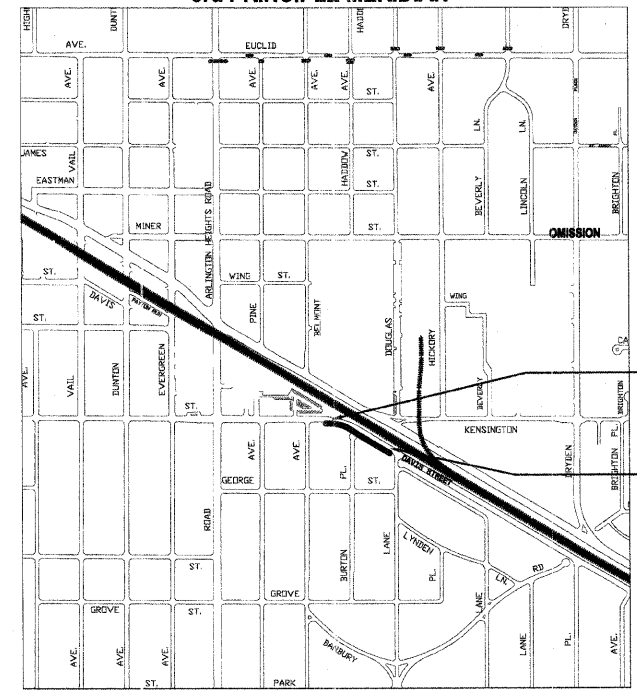


TRAFFIC DATA

ADT: DAVIS STREET 1990 ADT (2002)

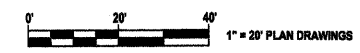
FUNCTIONAL CLASSIFICATION = LOCAL STREET

LOCATION MAP
N.T.S.
TOWNSHIP 42 N RANGE 11 E WHEELING TOWNSHIP,
3rd PRINCIPLE MERIDIAN



END PROJECT
SIDEWALK
STA 3+53

BEGIN PROJECT
SIDEWALK
STA 0+00



FULL SIZE PLANS HAVE BEEN PREPARED USING STANDARD ENGINEERING SCALES. REDUCED SIZED PLANS WILL NOT CONFORM TO STANDARD SCALES, IN MAKING MEASUREMENTS ON REDUCED PLANS US THE GRAPHIC SCALES ON DRAWINGS

J.U.L.I.E.
JOINT UTILITY LOCATION INFORMATION FOR EXCAVATION
1-800-892-0123

THE CONTRACTOR SHALL CONTACT THE OWNERS OF ALL UTILITIES 48 HOURS IN ADVANCE OF EXCAVATION. CALL J.U.L.I.E. ; 1-800-892-0123, AND ANY NON-MEMBER UTILITY OWNERS LISTED ON THE PLANS

PROJECT ENGINEER: JAMES MASSARELLI, P.E.
PROJECT MANAGER: DEREK MACH, RLA
CONTRACT NO. 63615

PROJECT LENGTH
GROSS AND NET LENGTH OF IMPROVEMENT = 353 FEET

STATE OF ILLINOIS
DEPARTMENT OF TRANSPORTATION
DIVISION OF HIGHWAYS

APPROVED July 12, 2011
James J. Massarelli
VILLAGE OF ARLINGTON HEIGHTS

PASSED July 15, 2011
Christophe...
DISTRICT ONE ENGINEER OF LOCAL ROADS AND STREETS

RELEASING FOR BID
BASED ON LIMITED REVIEW July 18, 2011
Diana M. O'Keefe
DEPUTY DIRECTOR OF HIGHWAYS, REGION ONE ENGINEER

PROFESSIONAL ENGINEER'S SIGN & SEAL
James J. Massarelli
JAMES J. MASSARELLI, P.E.
DIRECTOR OF ENGINEERING
VILLAGE OF ARLINGTON HEIGHTS
LICENSES EXPIRES _____

**PRINTED BY THE AUTHORITY
OF THE STATE OF ILLINOIS**

PROGRAM AND OFFICE ENGINEER: CHARLES F. RIDGLE, P.E. 847-705-4406 SCHAMBERG, I.L.
Jul 11, 2011 - 2:50pm
V:\DOT\1106_1107_REV_1\mover.dwg

GENERAL NOTES

ALL CONSTRUCTION SHALL BE IN ACCORDANCE WITH THE "STANDARD SPECIFICATIONS FOR ROAD AND BRIDGE CONSTRUCTION", ADOPTED JANUARY 1, 2007; THE "SUPPLEMENTAL SPECIFICATIONS AND RECURRING SPECIAL PROVISIONS", ADOPTED JANUARY 1, 2011; THE LATEST EDITION OF THE "ILLINOIS MANUAL ON UNIFORM TRAFFIC CONTROL DEVICES FOR STREET AND HIGHWAYS" (MUTCD); THE STANDARD SPECIFICATIONS FOR WATER AND SEWER MAIN CONSTRUCTION IN ILLINOIS; THE "STANDARD SPECIFICATIONS FOR TRAFFIC CONTROL ITEMS"; AND THE "MANUAL OF TEST PROCEDURES FOR MATERIALS".

ANY REFERENCE TO "STANDARDS" THROUGHOUT THE PLANS OR SPECIAL PROVISIONS SHALL BE INTERPRETED AS THE LATEST IDOT STANDARDS.

IT SHALL BE THE CONTRACTOR'S RESPONSIBILITY TO VERIFY ALL DIMENSIONS AND CONDITIONS EXISTING IN THE FIELD PRIOR TO ORDERING MATERIALS AND BEGINNING CONSTRUCTION.

CONSTRUCTION ACTIVITIES MAY OCCUR BETWEEN 7:00AM AND 5:00PM MONDAY THROUGH FRIDAY AND 8:00AM TO 5:00PM ON SATURDAYS. CONSTRUCTION ACTIVITIES ON SUNDAY ARE PROHIBITED. NO WORK WILL BE PERFORMED ON HOLIDAYS OBSERVED IN ILLINOIS. CONSTRUCTION ACTIVITIES ARE IDENTIFIED AS THE OPERATION OF HEAVY EQUIPMENT, INCLUDING BUT NOT LIMITED TO THE WARMING UP OF ANY PIECE OF EQUIPMENT OR TURNING ON ENGINES. CONSTRUCTION ACTIVITIES SHALL NOT BEGIN BEFORE 7:00AM.

MATERIAL AND EQUIPMENT MUST BE STORED IN AN AREA APPROVED BY THE ENGINEER.

THE CONTRACTOR SHALL BE RESPONSIBLE FOR ANY DAMAGE OR DESTRUCTION OF PUBLIC OR PRIVATE PROPERTY IN ACCORDANCE WITH THE SPECIAL PROVISIONS AND ARTICLE 107.20 OF THE "STANDARD SPECIFICATION", AND SHALL RESTORE SUCH PROPERTY AT HIS OWN EXPENSE.

THE LOCATIONS OF PUBLIC OR PRIVATE UTILITIES SHOWN ON THE PLANS ARE APPROXIMATE AND THE VILLAGE DOES NOT GUARANTEE THEIR ACCURACY. THE CONTRACTOR SHALL HAVE THE RESPECTIVE UTILITY COMPANIES FIELD LOCATE ALL THEIR FACILITIES PRIOR TO BEGINNING CONSTRUCTION. THE CONTRACTOR SHALL ALSO VERIFY THE DEPTHS OF THE EXISTING UTILITIES IF NECESSARY. ANY RELOCATION OR LOWERING OF UTILITIES SHALL BE COORDINATED BY THE CONTRACTOR.

THE CONTRACTOR SHALL BE RESPONSIBLE FOR THE PROTECTION OF ALL UNDERGROUND OR SURFACE UTILITIES EVEN THOUGH THEY MAY NOT BE SHOWN ON THE PLANS; ANY UTILITY THAT IS DAMAGED DURING CONSTRUCTION SHALL BE REPAIRED OR REPLACED AT THE CONTRACTOR'S EXPENSE TO THE SATISFACTION OF THE VILLAGE ENGINEER.

BEFORE STARTING ANY EXCAVATION, THE CONTRACTOR SHALL CALL "JULIE" AT 1-800-892-0123 OR 811 FOR FIELD LOCATIONS OF BURIED ELECTRIC, TELEPHONE, GAS AND CABLE TELEVISION FACILITIES IN ACCORDANCE WITH STATE LAW.

EMERGENCY VEHICLE ACCESS MUST BE MAINTAINED DURING CONSTRUCTION.

PLAN	DATE	BY
	DATE	BY
NOTE BOOK NO.	DATE	BY
	DATE	BY
STRUCTURE NOTATION CTNO	DATE	BY
	DATE	BY

PROFILE	DATE	BY
	DATE	BY
NOTE BOOK NO.	DATE	BY
	DATE	BY
STRUCTURE NOTATION CTNO	DATE	BY
	DATE	BY

FILE NAME = General Notes.dwg	USER NAME = dmach	DESIGNED - DMM	REVISED -	STATE OF ILLINOIS DEPARTMENT OF TRANSPORTATION	DAVIS STREET SIDEWALK IMPROVEMENTS	F.A. RTE.	SECTION	COUNTY	TOTAL SHEETS	SHEET NO.	
	VIEWPORT NAME = GENERAL NOTES	DRAWN - DMM	REVISED -				11-00198-00-LS	COOK	6	2	
	PLOT SCALE = 1" / IN.	CHECKED - JM	REVISED -			CONTRACT NO. 63615					
	PLOT DATE = Jul 11, 2011 - 2:46pm	DATE - 06/27/2011	REVISED -			SCALE: N.T.S.	SHEET NO. 2 OF 6 SHEETS	FED ROAD DIST NO. 1 ILLINOIS FED. AID PROJECT			

PLAN	DATE	BY
	DATE	BY
NOTE BOOK NO.	DATE	BY
	DATE	BY
STRUCTURE NOTATIONS CHFD	DATE	BY
	DATE	BY

PROFILE	DATE	BY
	DATE	BY
NOTE BOOK NO.	DATE	BY
	DATE	BY
STRUCTURE NOTATIONS CHFD	DATE	BY
	DATE	BY

CODE #	ITEM	UNITS	Construction TYPE CODE 0031 TOTAL QTY
20101100	TREE TRUNK PROTECTION	EACH	2
20200100	EARTH EXCAVATION	CU YD	40
31101180	SUBBASE GRANULAR MATERIAL, TPE B 2"	SQ YD	56
42400200	PORTLAND CEMENT CONCRETE SIDEWALK 5 INCH	SQ FT	2275
67100100	MOBILIZATION	LSUM	1
70102620	TRAFFIC CONTROL AND PROTECTION, STANDARD 701501	LSUM	1
B2006020	TREE SYRINGA PEKINENSIS (PEKING LILAC), 2-1/2" CAL, TREE FORM, BALLED	EACH	4
X6640298	CHAIN LINK FENCE (SPECIAL)	FOOT	325
X6640300	CHAIN LINK FENCE REMOVAL	FOOT	325
Z0048665	RAILROAD PROTECTIVE LIABILITY INSURANCE	LSUM	1

FILE NAME = 1dot-plan-profile-sheet 6_23_11.dwg

USER NAME = dmach	DESIGNED - DMM	REVISED -
LAYOUT NAME = ANSI Expand D	DRAWN - DMM	REVISED -
PLOT SCALE = 20.00' / IN.	CHECKED - JM	REVISED -
PLOT DATE = Jul 11, 2011 - 6:47pm	DATE - 06/20/2011	REVISED -

**STATE OF ILLINOIS
DEPARTMENT OF TRANSPORTATION**

**DAVIS STREET SIDEWALK IMPROVEMENTS
PLAN**

SCALE: 1"=20' SHEET NO. 3 OF 6 SHEETS

F.A. RTE.	SECTION	COUNTY	TOTAL SHEETS	SHEET NO.
	11-00198-00-LS	COOK	6	3
CONTRACT NO. 63615			FED. ROAD DIST. NO. 1 ILLINOIS FED. AID PROJECT	

W:\0001

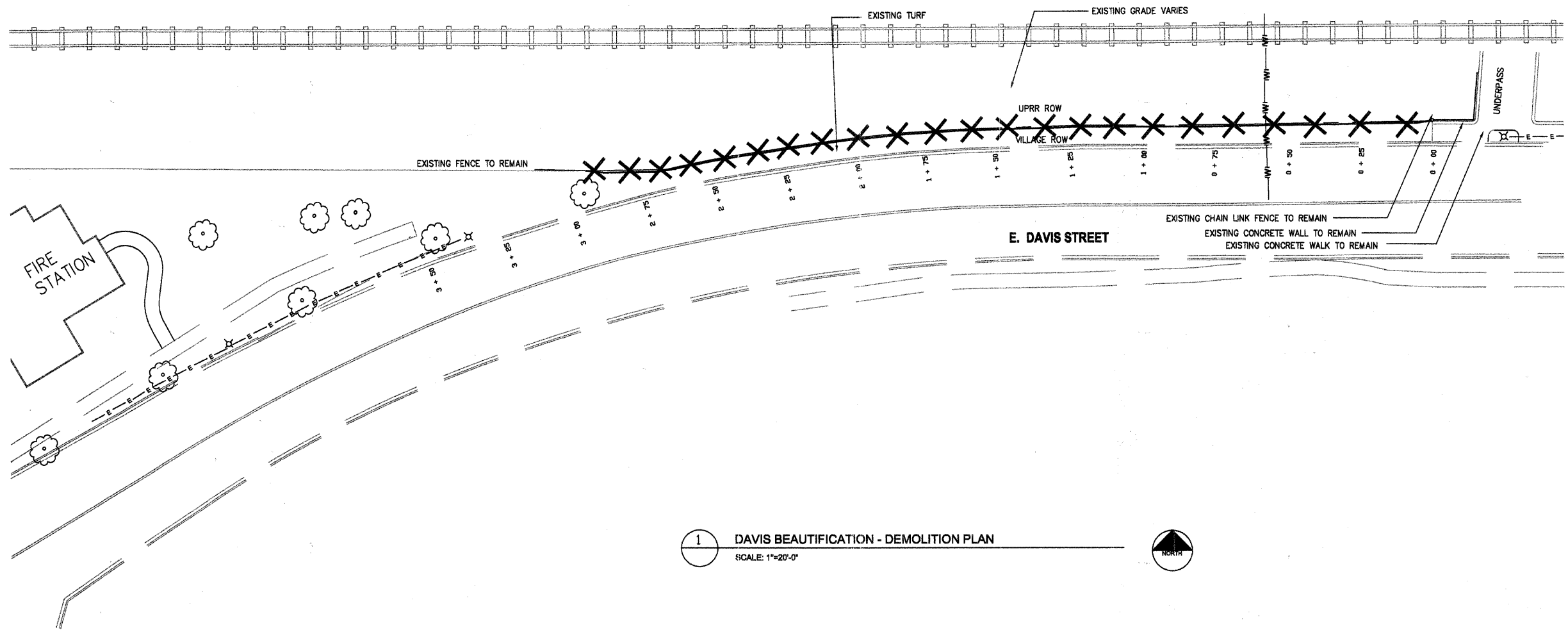


LEGEND

STREET LIGHT	⌘
WATER LINE (36")	— W —
ELECTRIC LINE	— E —
EXISTING FENCE TO BE REMOVED	✕

NORTHWEST HIGHWAY

UNION PACIFIC RAILROAD TRACKS



1 DAVIS BEAUTIFICATION - DEMOLITION PLAN
SCALE: 1"=20'-0"



PLAN	DATE
BY	
CHECKED	
DATE	
NO.	

PROFILE	DATE
BY	
CHECKED	
DATE	
NO.	

FILE NAME =	USER NAME = dmach	DESIGNED - DMM	REVISED -
1dot-plan-profile-sheet_8_23_11.dwg	LAYOUT NAME = Layout1	DRAWN - DMM	REVISED -
	PLOT SCALE = 20.00' / IN.	CHECKED - JM	REVISED -
	PLOT DATE = Jul 11, 2011 - 2:52pm	DATE - 06/20/2011	REVISED -

STATE OF ILLINOIS
DEPARTMENT OF TRANSPORTATION

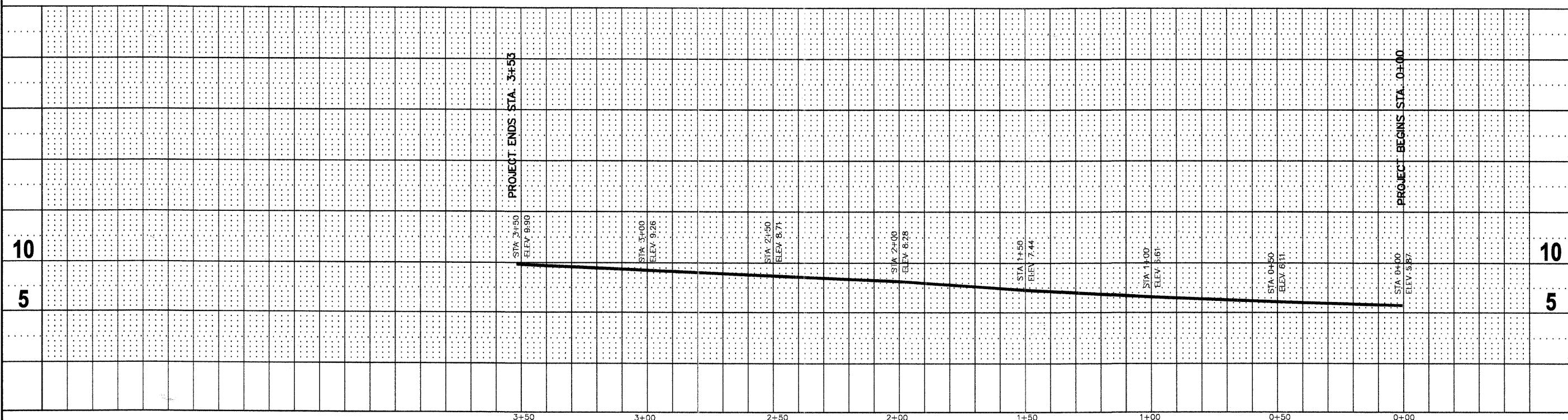
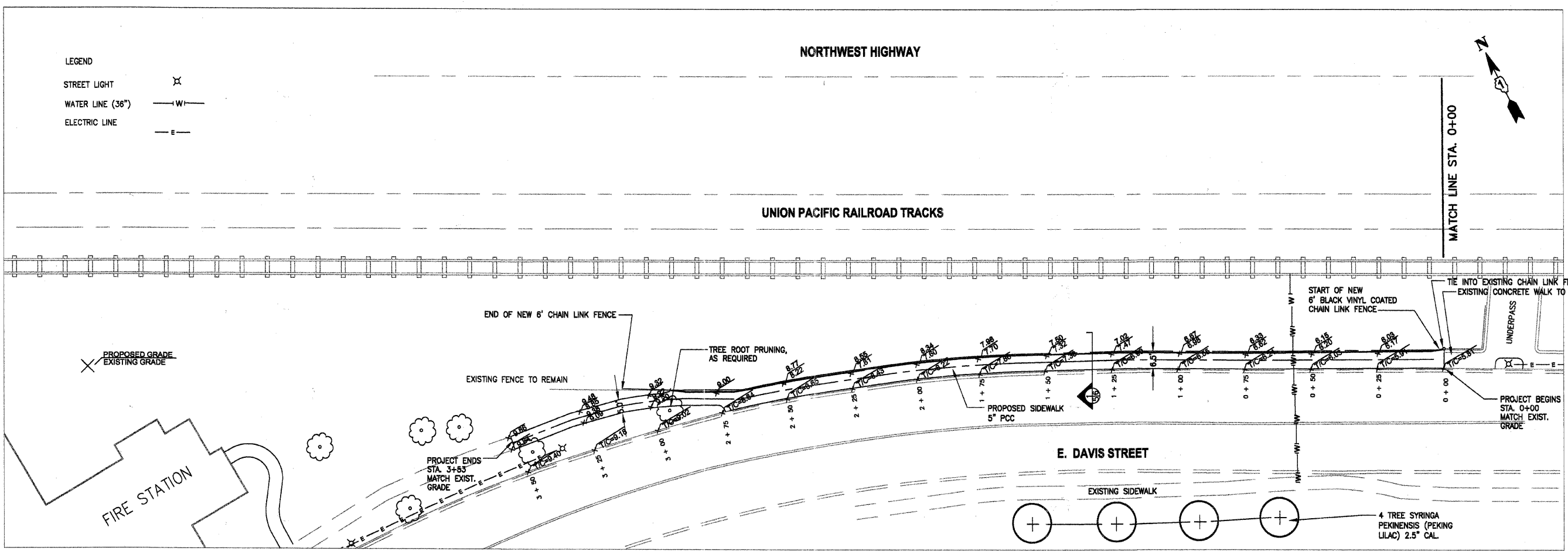
DAVIS STREET SIDEWALK IMPROVEMENTS
DEMOLITION PLAN

SCALE: 1"=20'	SHEET NO. 4 OF 6 SHEETS	F.A.R.T.E.	SECTION	COUNTY	TOTAL SHEETS	SHEET NO.
			11-00198-00-LS	COOK	6	4
					CONTRACT NO. 63615	
FED ROAD DIST NO. 1 ILLINOIS FED. AID PROJECT						

DATE	
BY	
DESIGNED	
DRAWN	
CHECKED	
DATE	
NO.	
STRUCTURE NOTATION	
PLAN	
NOTE BOOK	
NO.	

DATE	
BY	
DESIGNED	
DRAWN	
CHECKED	
DATE	
NO.	
STRUCTURE NOTATION	
PROFILE	
NOTE BOOK	
NO.	

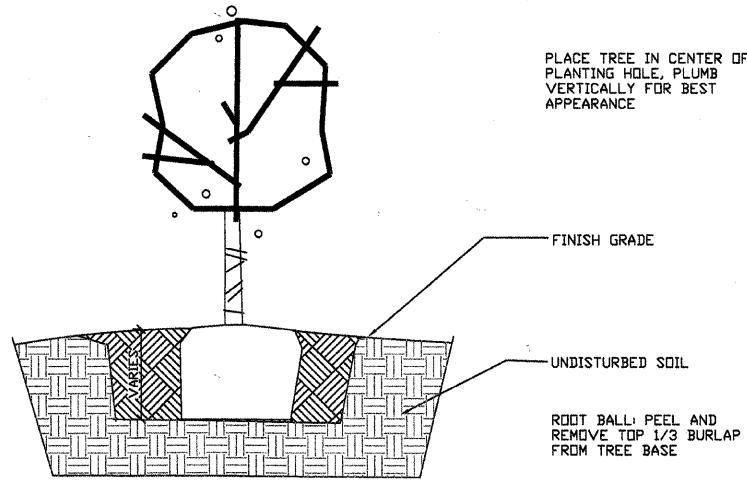
LEGEND
 STREET LIGHT X
 WATER LINE (36") W
 ELECTRIC LINE E



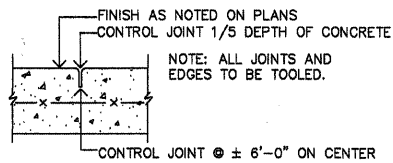
FILE NAME = DOT-PP SITE PLAN.dwg	USER NAME = dmach	DESIGNED - DMM	REVISED -	STATE OF ILLINOIS DEPARTMENT OF TRANSPORTATION	DAVIS STREET SIDEWALK IMPROVEMENTS PLAN AND PROFILE		F.A. RTE. 11-00198-00-LS	COUNTY COOK	TOTAL SHEETS 6	SHEET NO. 5
	LAYOUT NAME = Layout1	DRAWN - DMM	REVISED -		HORIZ. 1"=20'		CONTRACT NO. 63615			
	PLOT SCALE = 20.00' / IN.	CHECKED - JM	REVISED -		SCALE: VERT. 1"=5'		SHEET NO. 5 OF 6 SHEETS		STA. 0+00 TO STA. 3+53	
	PLOT DATE = Jul 12, 2011 - 8:41am	DATE - 06/27/2011	REVISED -		FED ROAD DIST NO. 1 ILLINOIS FED. AID PROJECT					

DATE	
BY	
REVIEWED	
NOTED	
DATE CHECKED	
BY	
STRUCTURE NOTATIONS CHNO	
PLAN	
NOTE BOOK	
NO.	

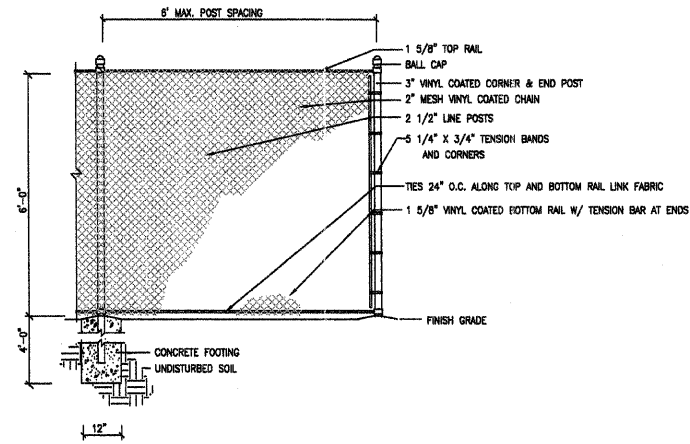
DATE	
BY	
REVIEWED	
NOTED	
DATE CHECKED	
BY	
STRUCTURE NOTATIONS CHNO	
PROFILE	
NOTE BOOK	
NO.	



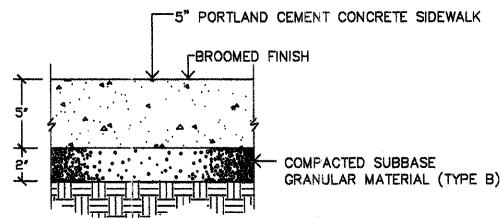
6 TOOLED CONTROL JOINTS
NTS



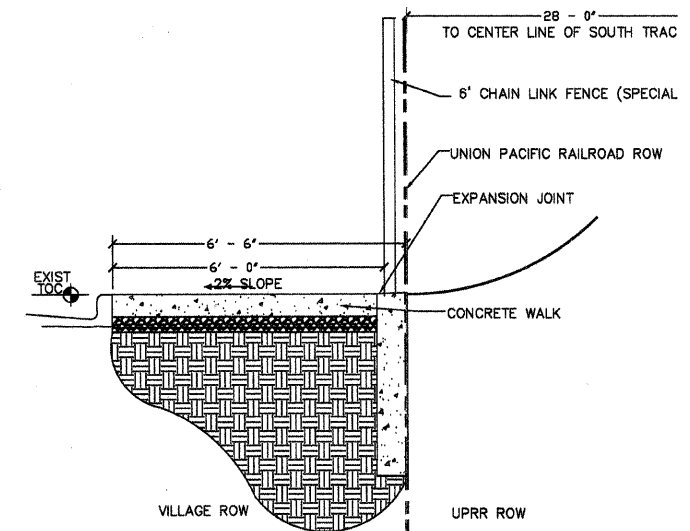
5 TOOLED CONTROL JOINTS
NTS



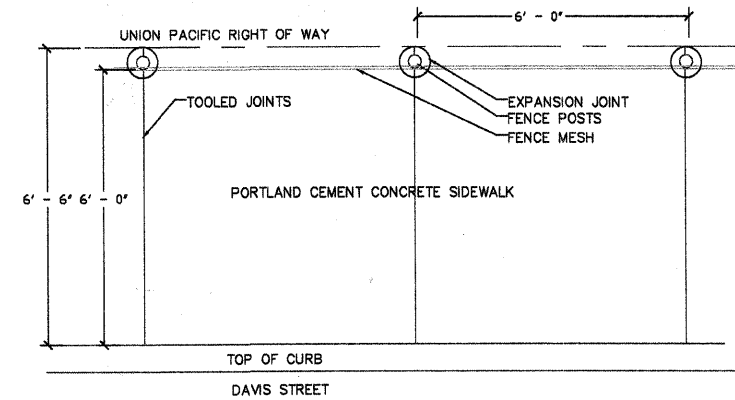
2 6' CHAIN LINK FENCE (SPECIAL)
NTS



4 PORTLAND CEMENT CONCRETE SIDEWALK
NTS



1 DAVIS STREET BEAUTIFICATION - SECTION
SCALE: 3/8" = 1'-0"



3 PLAN VIEW
SCALE: 3/8" = 1'-0"

FILE NAME =	USER NAME = dmach	DESIGNED - DMM	REVISED -
1dot-plan-profile-sheet.dwg	LAYOUT NAME = Layout4	DRAWN - DMM	REVISED -
	PLOT SCALE = 20.00' / IN.	CHECKED - JM	REVISED -
	PLOT DATE = Jul 11, 2011 - 3:00pm	DATE - 06/20/2011	REVISED -

STATE OF ILLINOIS
DEPARTMENT OF TRANSPORTATION

DAVIS STREET SIDEWALK IMPROVEMENTS
DETAILS

SCALE: 1"=20' SHEET NO. 6 OF 6 SHEETS

F.A. RTE.	SECTION	COUNTY	TOTAL SHEETS	SHEET NO.
	11-00198-00-LS	COOK	6	6
				CONTRACT NO. 63615
FED ROAD DIST NO. 1 ILLINOIS FED. AID PROJECT				