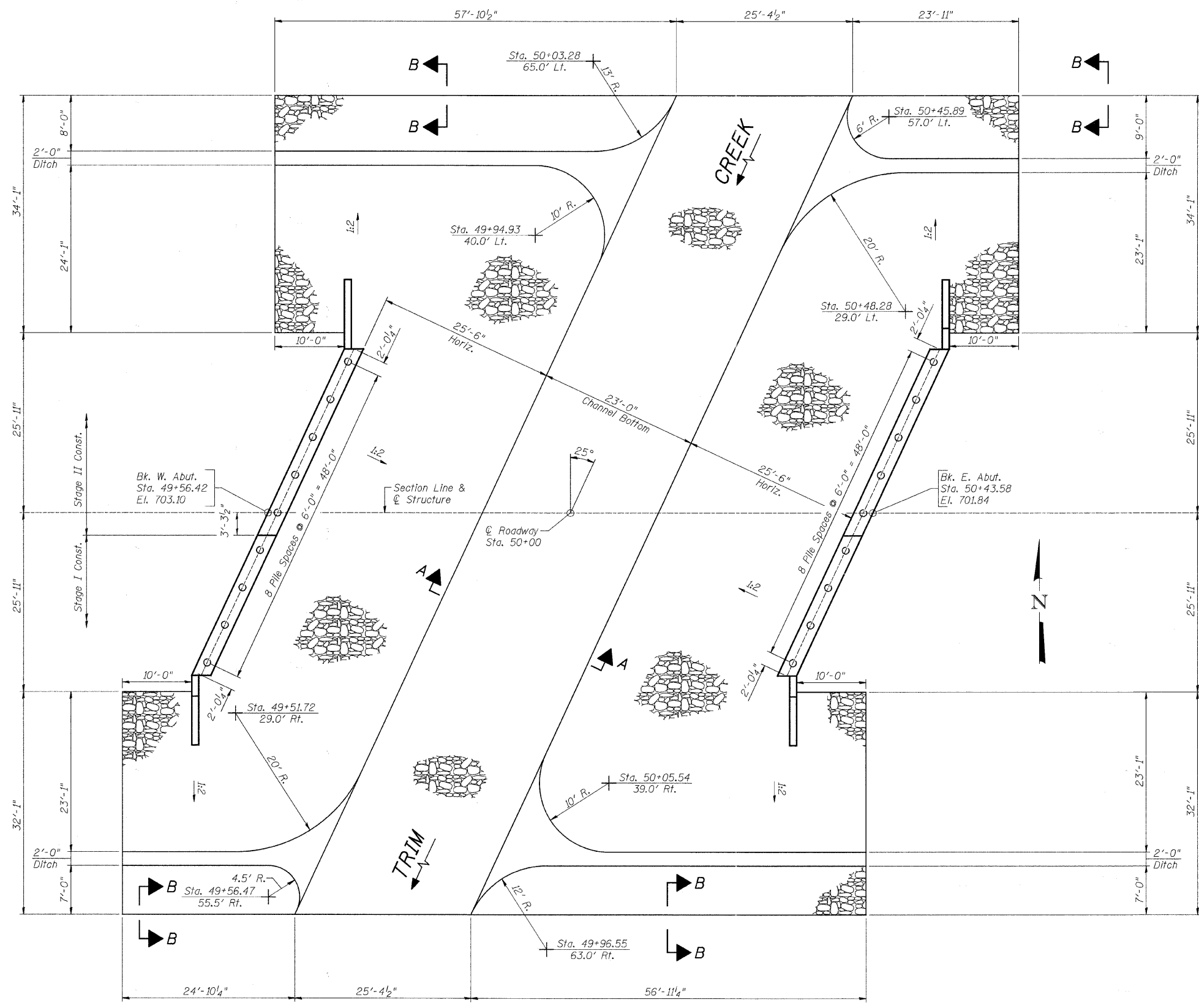
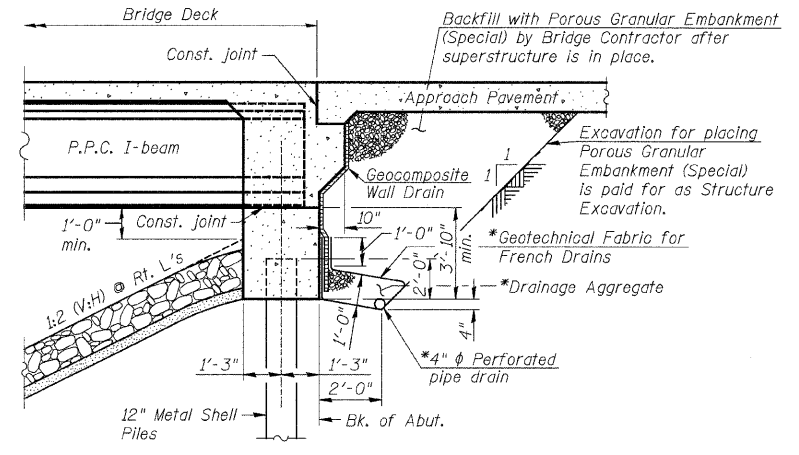


FILE = S:\Struct\1033004-Indiana Avenue Design\Structural Drawings\1033004Riprap.dgn

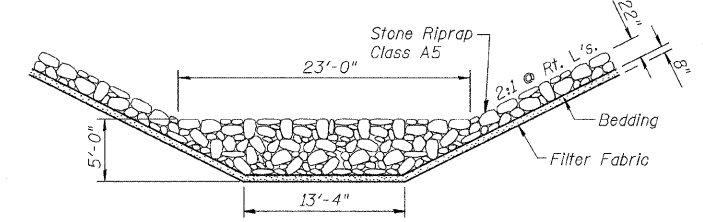


PLAN

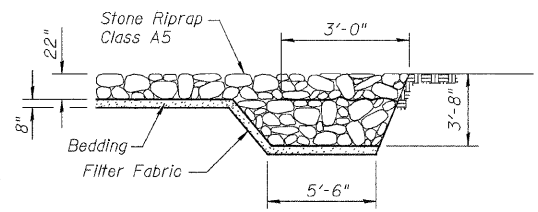


SECTION THRU INTEGRAL ABUTMENT
(Horiz. dim. @ Rt. L's)

*Included in the cost of Pipe Underdrains for Structures.
NOTE:
 All drainage system components shall extend to 2'-0" from the end of each wingwall except an outlet pipe shall extend until intersecting with the side slopes. The pipes shall drain into concrete headwalls. (See Article 601.05 of the Standard Specifications and Highway Standard 60110).



SEC A-A



SEC B-B

STONE RIPRAP ANCHOR DETAILS

BILL OF MATERIAL

Item	Unit	Total
Stone Riprap, Class A5	Sq. Yd.	1,349
Filter Fabric	Sq. Yd.	1,349

REVISION	DATE	BY	REMARKS

ILLINOIS DEPARTMENT OF TRANSPORTATION
BRIDGE REPLACEMENT
INDIANA AVENUE (CH 24) OVER TRIM CREEK

WILLET HOFMANN & ASSOCIATES INC.
 ENGINEERING ARCHITECTURE LAND SURVEYING
 809 EAST 2ND STREET, DIXON, IL 61021-0367
 T: 815-284-3381 DESIGN FIRM: A184-000918

WILL COUNTY

RIPRAP AND PILE LAYOUT
STRUCTURE NO. 099-3378
STRUCTURAL SHEET NO. 4 OF 19 SHEETS

SECTION	COUNTY	TOTAL SHEETS	SHEET NO.
01-00042-07-BR	WILL	58	17
STA. 47+00	STA. 53+50		
WHA #: 1033004	DATE: 6/9/2011		

CONTRACT NO. 63617