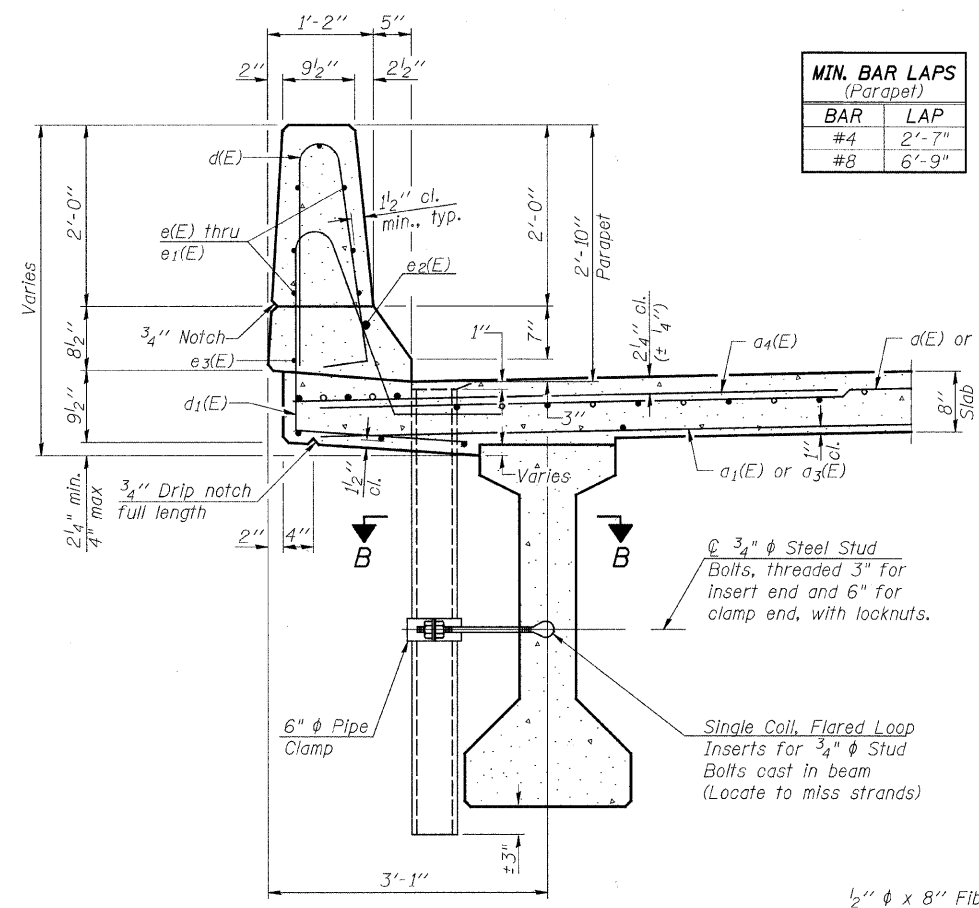
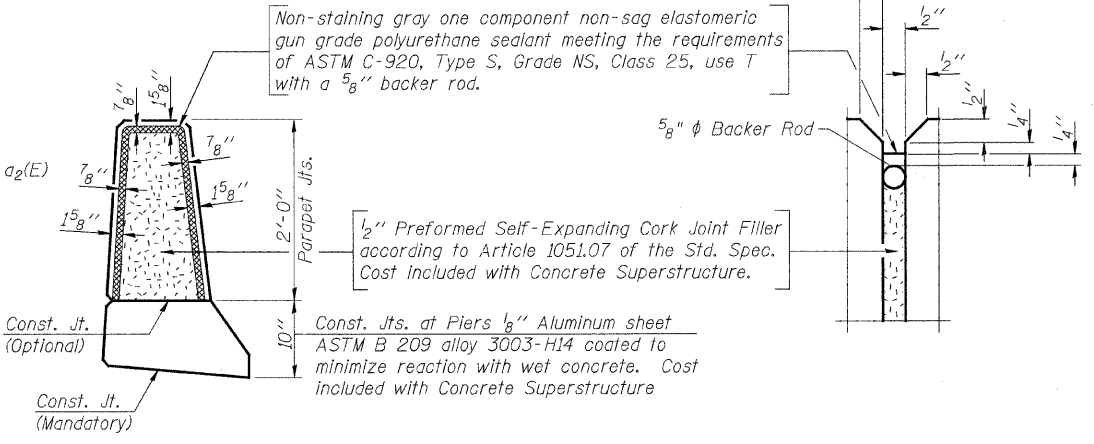


**INSIDE ELEVATION OF PARAPET**



**SECTION THRU PARAPET**

MIN. BAR LAPS (Parapet)	
BAR	LAP
#4	2'-7"
#8	6'-9"

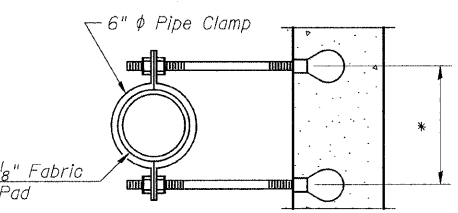


**PARAPET JOINT DETAILS**

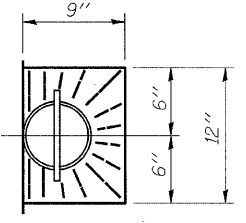
**NOTES:**  
 The exterior surfaces of the floor drains shall be painted with the finish coat as specified in the special provisions for Cleaning and Painting New Metal Structures. The exterior surfaces of the drains shall be cleaned according to Society of Protective Coatings Spec. SSPC-SP1 prior to painting.

Fiberglass pipe shall conform to ASTM D 2996, with short-time rupture strength hoop tensile stress of 30,000 p.s.i. minimum.

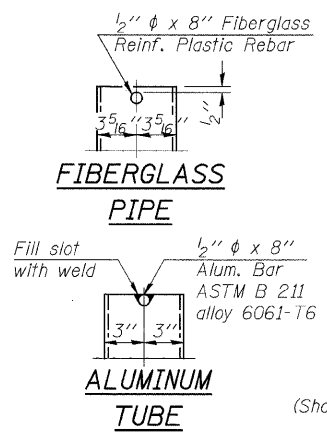
Galvanize clamping device according to AASHTO M232. Cost of clamping device and inserts is included with Floor Drains.



**SECTION B-B**

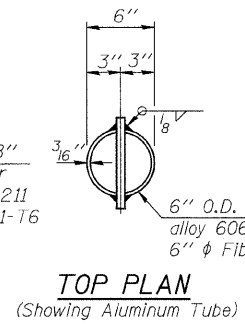


**TOP PLAN**

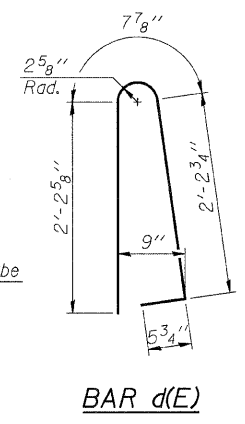


**FIBERGLASS PIPE**

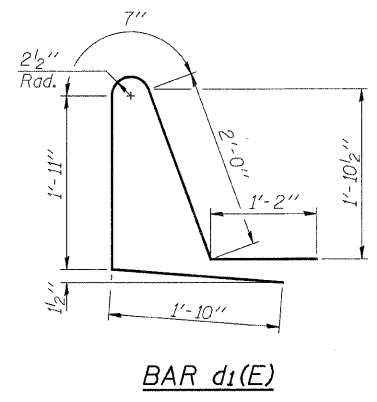
**ALUMINUM TUBE**



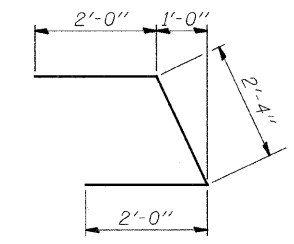
**TOP PLAN (Showing Aluminum Tube)**



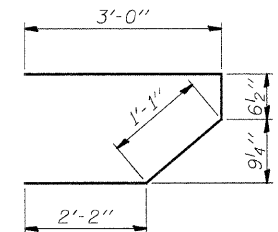
**BAR d(E)**



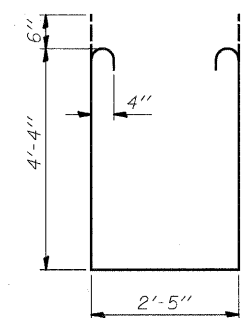
**BAR d1(E)**



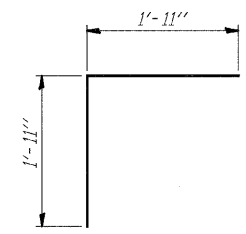
**BAR u(E)**



**BAR s(E)**



**BAR s1(E)**



**BAR v(E)**

**SUPERSTRUCTURE BILL OF MATERIAL**

Bar	No.	Size	Length	Shape
d(E)	150	#5	19'-10"	
a <sub>1</sub> (E)	106	#5	19'-10"	
a <sub>2</sub> (E)	150	#5	26'-5"	
a <sub>3</sub> (E)	106	#5	26'-5"	
a <sub>4</sub> (E)	150	#6	5'-8"	
a <sub>5</sub> (E)	4	#6	21'-11"	
a <sub>6</sub> (E)	4	#6	29'-2"	
b(E)	100	#5	45'-1"	
b <sub>1</sub> (E)	108	#5	31'-1"	
d(E)	190	#5	5'-7"	
d <sub>1</sub> (E)	190	#5	7'-6"	
e(E)	28	#4	17'-0"	
e <sub>1</sub> (E)	42	#4	17'-2"	
e <sub>2</sub> (E)	6	#4	30'-8"	
e <sub>3</sub> (E)	6	#8	33'-5"	
m(E)	4	#6	21'-11"	
m <sub>1</sub> (E)	4	#6	29'-2"	
m <sub>2</sub> (E)	6	#6	21'-11"	
m <sub>3</sub> (E)	6	#6	29'-2"	
m <sub>4</sub> (E)	4	#6	21'-11"	
m <sub>5</sub> (E)	4	#6	29'-2"	
m <sub>6</sub> (E)	4	#6	2'-0"	
m <sub>7</sub> (E)	12	#6	4'-11"	
s(E)	84	#5	6'-3"	
s <sub>1</sub> (E)	84	#4	12'-1"	
u(E)	16	#4	2'-10"	
v(E)	92	#5	6'-4"	
Floor Drains		Each	10	
Concrete Superstructure		Cu. Yds.	172.5	
Bridge Deck Grooving		Sq. Yds.	407	
Protective Coat		Sq. Yds.	497	
Reinforcement Bars, Epoxy Coated		Pound	29,230	
Bar Splicers		Each	363	

**NOTES:**  
 Reinforcement bars designated (E) shall be epoxy coated.

Bars indicated thus 1 x 3-#8 etc. indicates 1 line of bars with 3 lengths per line.

Reinforcement bars shall be according to the requirements of AASHTO M 31 (M 31M) or M 322 (M 322M), Grade 60 (400) for deformed bars.

FILE = S:\Struct\1033004-Indiana Avenue\Design\Structural Drawings\1033004SuperstructureDetail.dgn

REVISION	DATE	BY	REMARKS

DRAWN R.D.A.  
 CHECKED M.C.W.  
 APPROVED B.K.C.

**ILLINOIS DEPARTMENT OF TRANSPORTATION  
 BRIDGE REPLACEMENT  
 INDIANA AVENUE (CH 24) OVER TRIM CREEK**

**WILLET HOFMANN & ASSOCIATES INC.**  
 ENGINEERING ARCHITECTURE LAND SURVEYING  
 809 EAST 2ND STREET, DIXON, IL 61021-0367  
 T: 815-284-3381 DESIGN FIRM: #184-000918

**WILL COUNTY**

**SUPERSTRUCTURE DETAILS  
 STRUCTURE NO. 099-3378  
 STRUCTURAL SHEET NO. 9 OF 19 SHEETS**

SECTION	COUNTY	TOTAL SHEETS	SHEET NO.
01-00042-07-BR	WILL	58	22
STA. 47+00	STA. 53+50		
WHA #: 1033004	DATE: 6/9/2011		

CONTRACT NO. 63617