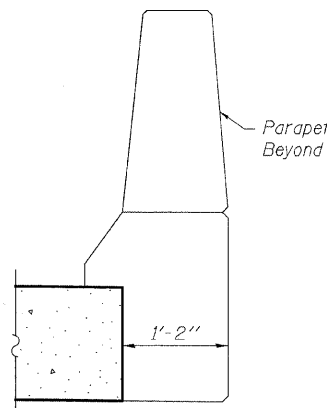
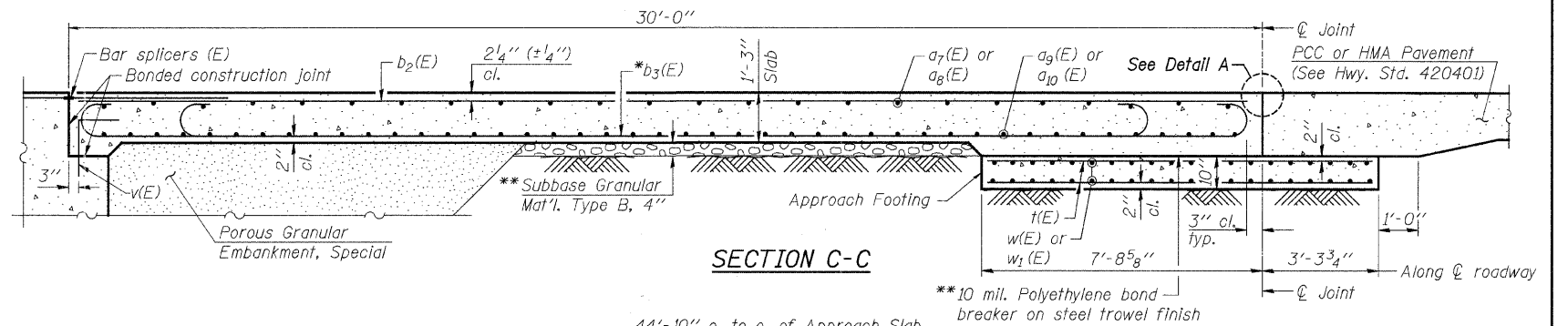


FLEXIBLE PAVEMENT

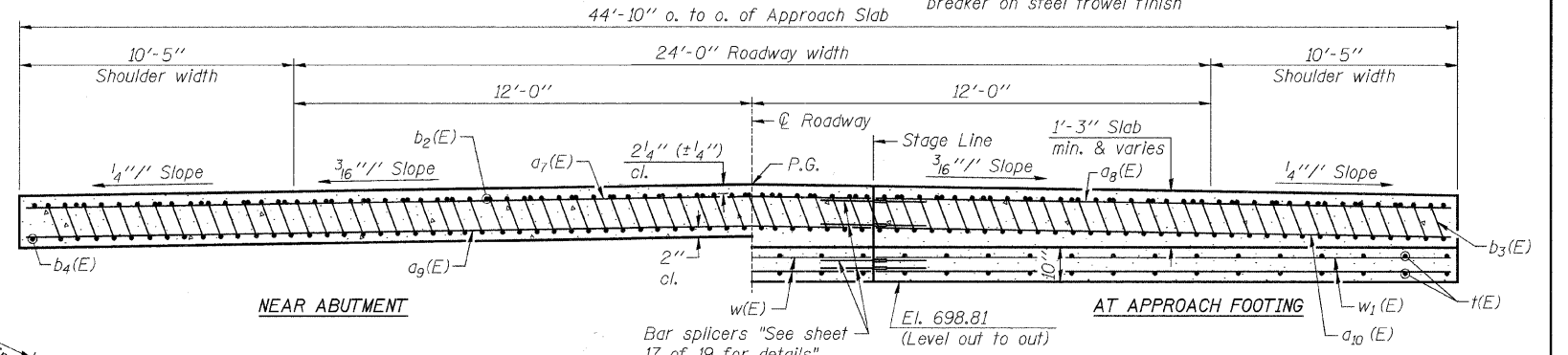
DETAIL A



VIEW B-B

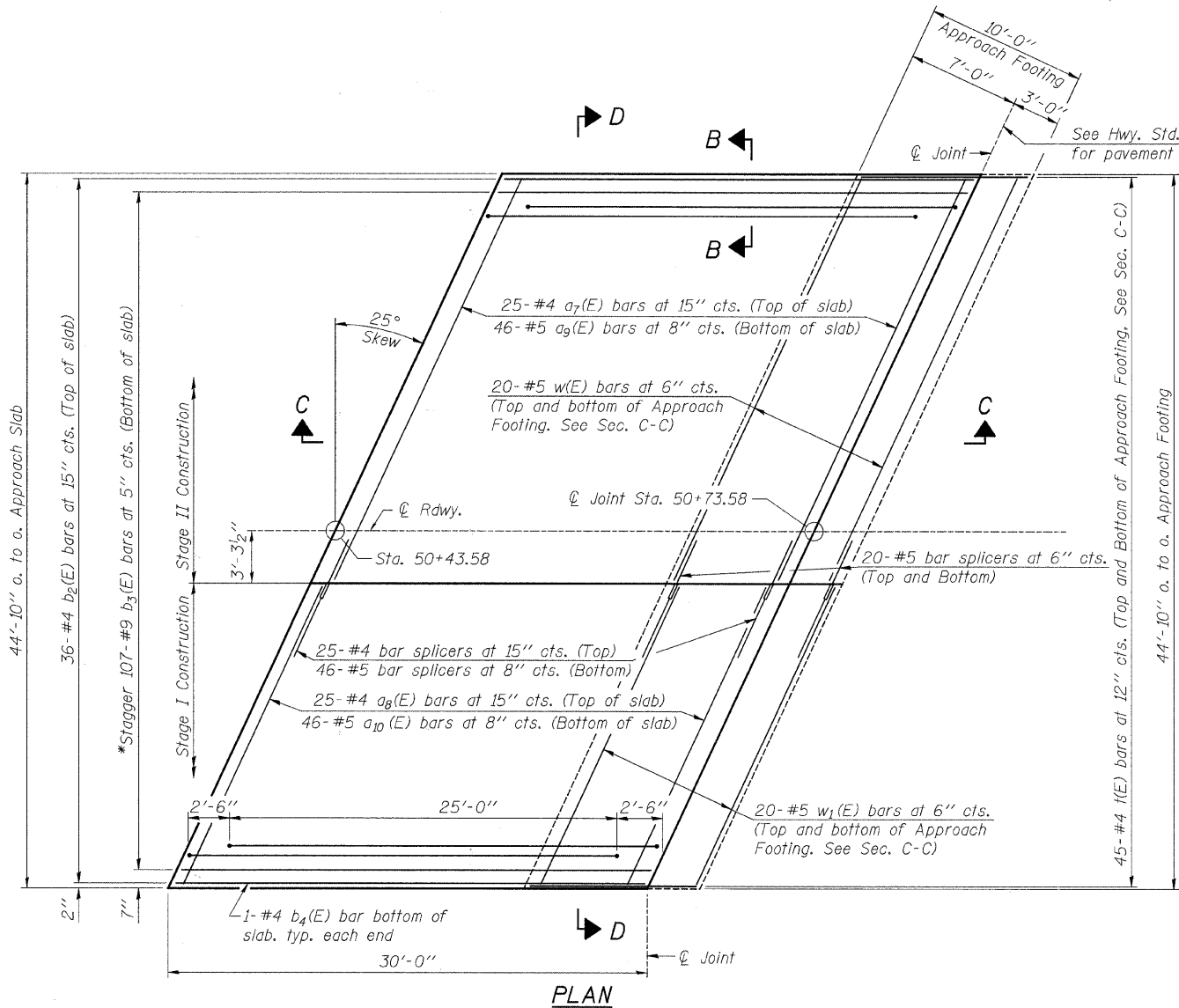


SECTION C-C

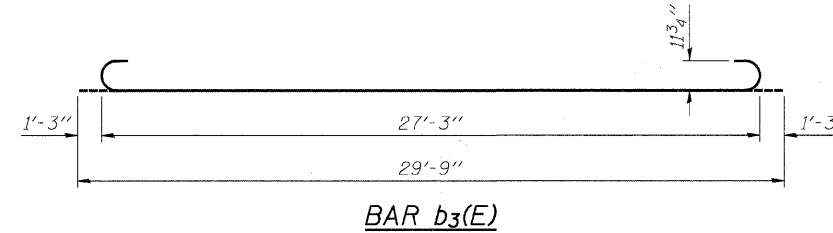


SECTION D-D

(See Plan for dimensions not shown.)



PLAN



BAR b3(E)

BILL OF MATERIAL

Bar	No.	Size	Length	Shape
a7(E)	25	#4	28'-0"	—
a8(E)	25	#4	20'-8"	—
a9(E)	46	#5	28'-0"	—
a10(E)	46	#5	20'-8"	—
b2(E)	36	#4	29'-8"	—
b3(E)	107	#9	29'-9"	—
b4(E)	2	#4	29'-8"	—
t(E)	90	#4	10'-9"	—
w(E)	40	#5	28'-0"	—
w1(E)	40	#5	20'-8"	—
Concrete Structures		Cu. Yd.	15.3	
Concrete Superstructure		Cu. Yd.	68.2	
Bridge Deck Grooving		Sq. Yd.	143	
Protective Coat		Sq. Yd.	150	
Reinforcement Bars, Epoxy Coated		Pound	17,400	
Bar Splicers		Each	111	

NOTES:

- a7(E) through a10(E) bar spacings measured along  $\varnothing$  Rdwy.
- Approach slab shall be paid for as Concrete Superstructure.
- Approach footing concrete shall be paid for as Concrete Structures.
- Reinforcement shall be paid for as Reinforcement Bars, Epoxy Coated.
- For v(E) bar details, see Structural Sheet 9 of 19.
- The approach footing maximum applied service bearing pressure (Gmax) = 2.0 ksf.
- For Bar Splicer Assembly Details, see Structural Sheet 17 of 19.
- Cost of excavation for approach footing included with Concrete Structures.
- For Porous Granular Embankment, Special and drainage treatment details, see Structural Sheet 4 of 19.
- For additional parapet details, see Structural Sheet 9 of 19.
- \*Tilt #9 b4(E) bars as required to maintain clearance.
- \*\*Cost included with Concrete Superstructure.

FILE = S:\Struct\0933004-Indiana Avenue\Design\Structural Drawings\0933004EastApproachSlabDetail.sldgn

REVISION	DATE	BY	REMARKS

DRAWN R.D.A.  
 CHECKED M.C.W.  
 APPROVED B.K.C.  
**ILLINOIS DEPARTMENT OF TRANSPORTATION**  
**BRIDGE REPLACEMENT**  
**INDIANA AVENUE (CH 24) OVER TRIM CREEK**

**WILLET HOFMANN & ASSOCIATES INC.**  
 ENGINEERING ARCHITECTURE LAND SURVEYING  
 309 EAST 2ND STREET, DIXON, IL 61021-0367  
 T: 815-284-3381 DESIGN FIRM: #184-00918

WILL COUNTY

**EAST BRIDGE APPROACH SLAB DETAILS**  
**STRUCTURE NO. 099-3378**  
**STRUCTURAL SHEET NO. 12 OF 19 SHEETS**

SECTION	COUNTY	TOTAL SHEETS	SHEET NO.
01-00042-07-BR	WILL	58	25
STA. 47+00	STA. 53+50		
WHA #: 1033D04	DATE: 6/9/2011		

CONTRACT NO. 63617