

INDEX OF SHEETS

- 1 COVER SHEET
- 2-3 GENERAL NOTES AND LIST OF STATE STANDARDS
- 4-5 SUMMARY OF QUANTITIES
- 6 MOCK UPS
- 7-10 TYPICAL SECTIONS
- 11 ALIGNMENT AND TIES
- 12 TEMPORARY DETOUR PLAN
- 13-16 SUGGESTED MAINTENANCE OF TRAFFIC PLAN
- 17-18 REMOVAL PLAN
- 19-22 PLAN AND PROFILE SHEETS
- 23 INTERSECTION GRADING PLAN
- 24-25 UTILITY PLAN AND PROFILE SHEETS
- 26 UTILITY DETAILS
- 27-31 TEMPORARY TRAFFIC SIGNAL PLAN
- 32-37 DISTRICT ONE STANDARD TRAFFIC SIGNAL DETAILS
- 38-39 EROSION CONTROL PLAN AND RESTORATION PLAN
- 40-45 PAVEMENT MARKING
- 46-47 STREET VAULT FILL DETAILS
- 48-52 LIGHTING PLANS AND DETAILS
- 53-100 WEST BRIDGE PLANS
- 101-145 EAST BRIDGE PLANS
- 146-152 DISTRICT ONE CONSTRUCTION DETAILS
- 153-155 CITY OF AURORA CONSTRUCTION DETAILS
- 156-157 FOX METRO DETAILS
- 158 KANE-DUPAGE SWCD DETAILS
- 159-164 CROSS SECTIONS

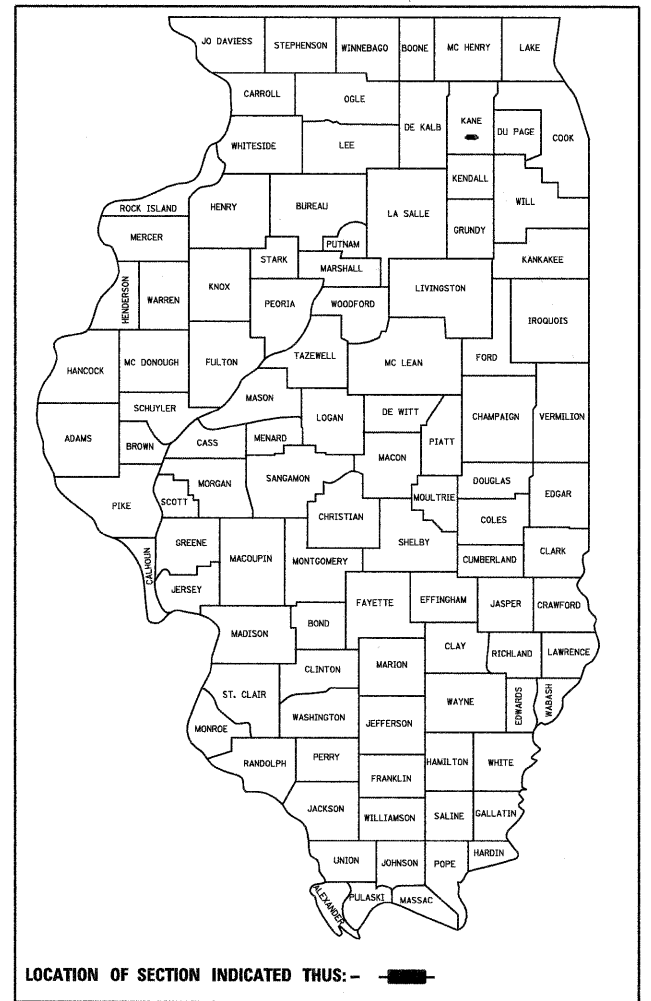
**STATE OF ILLINOIS
DEPARTMENT OF TRANSPORTATION
DIVISION OF HIGHWAYS**

**PLANS FOR PROPOSED
FEDERAL AID HIGHWAY**

**(MS 2038) DOWNER PLACE OVER FOX RIVER
BRIDGE RECONSTRUCTION
SECTION 07-00264-00-BR
PROJECT NO: BROS-00D1-(768)
STRUCTURE NO: 045-6005, 045-6006
CITY OF AURORA
KANE COUNTY
C-91-220-07**

F.A. RTE.	SECTION	COUNTY	TOTAL SHEETS	SHEET NO.
	07-00264-00-BR	KANE	164	1
FED. ROAD DIST. NO.	ILLINOIS	CONTRACT NO.	63620	

D-91-220-07



**PRINTED BY THE AUTHORITY
OF THE STATE OF ILLINOIS**

STATE OF ILLINOIS
DEPARTMENT OF TRANSPORTATION
DIVISION OF HIGHWAYS

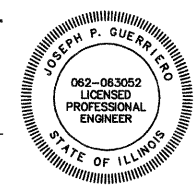
APPROVED June 29, 2011
Ronald Schmitt
CITY OF AURORA CL.

PASSED July 28, 2011
Christopher Hart
DISTRICT ONE ENGINEER OF LOCAL ROADS AND STREETS

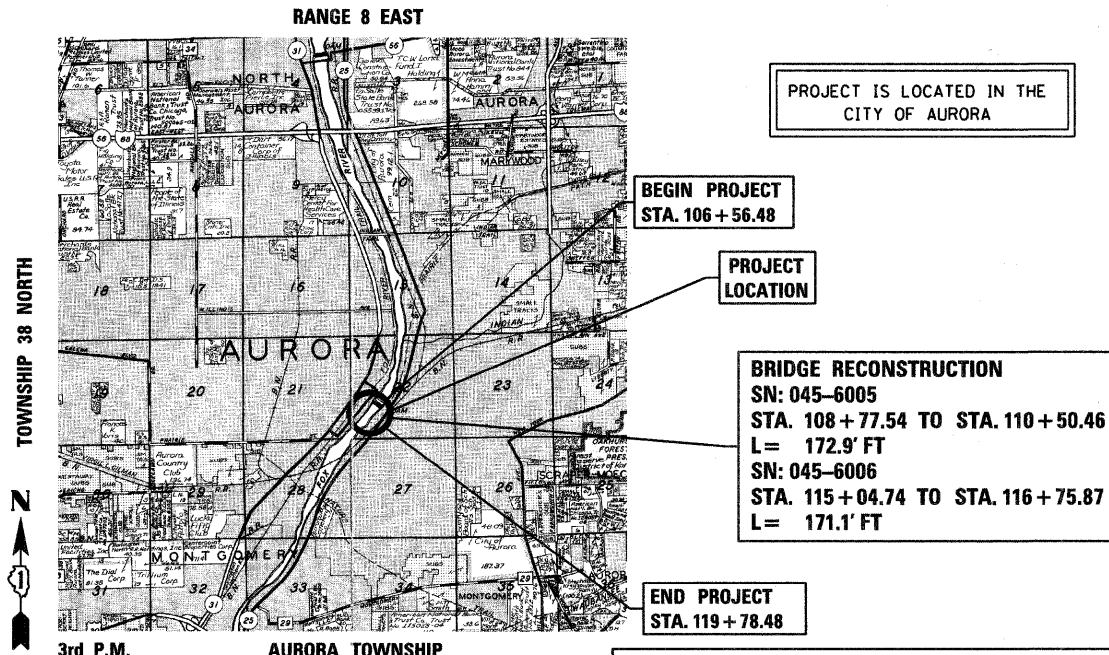
RELEASING FOR BID
BASED ON LIMITED REVIEW July 28, 2011
Diane M. O'Keefe
DEPUTY DIRECTOR OF HIGHWAYS, REGION ONE ENGINEER

PROFESSIONAL ENGINEER'S SIGN & SEAL

JOSEPH E. GUERRIERO, P.E.
EXPIRES: 11-30-2011
PERTAINS TO SHEETS: 1-45 & 146-164



PROJECT LOCATION MAP



PROJECT IS LOCATED IN THE
CITY OF AURORA

BEGIN PROJECT
STA. 106 + 56.48

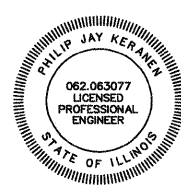
PROJECT
LOCATION

BRIDGE RECONSTRUCTION
SN: 045-6005
STA. 108 + 77.54 TO STA. 110 + 50.46
L = 172.9' FT
SN: 045-6006
STA. 115 + 04.74 TO STA. 116 + 75.87
L = 171.1' FT

END PROJECT
STA. 119 + 78.48

PROFESSIONAL ENGINEER'S SIGN & SEAL

Philip J. Keranen 6/27/2011
PHILIP J. KERANEN, P.E.
EXPIRES: 11-30-2011
PERTAINS TO SHEETS: 48-52



STRUCTURAL ENGINEER'S SIGN & SEAL

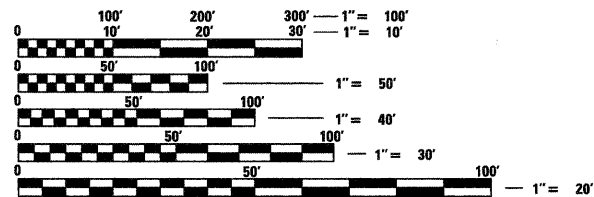
Robert G. Davies 6/27/2011
ROBERT G. DAVIES, S.E., P.E.
EXPIRES: 11-30-2012
PERTAINS TO SHEETS: 46, 47, 53-145



STRUCTURE INFORMATION:

EXISTING SN 045-6005
CONSTRUCTED CIRCA 1910 AS A THREE SPAN CAST-IN-PLACE CONCRETE CLOSED SPANDREL ARCH WITH AN OUT-TO-OUT WIDTH OF 63'-11 1/2" AND A TOTAL LENGTH OF 171'-1 1/2". THE EXISTING ARCH IS TO BE REMOVED AND REPLACED WITH A PPC DECK BEAM SUPERSTRUCTURE ON BUILT UP PIERS AND ABUTMENTS. THE EXISTING FOUNDATIONS WILL BE REUSED. STRUCTURE TO BE REMOVED AS SHOWN WITH NO SALVAGE.

EXISTING SN 045-6006
CONSTRUCTED CIRCA 1910 AS A THREE SPAN CAST-IN-PLACE CONCRETE CLOSED SPANDREL ARCH WITH AN OUT-TO-OUT WIDTH OF 63'-8" AND A TOTAL LENGTH OF 172'-11". THE EXISTING ARCH IS TO BE REMOVED AND REPLACED WITH A PPC DECK BEAM SUPERSTRUCTURE ON BUILT UP PIERS AND ABUTMENTS. THE EXISTING FOUNDATIONS WILL BE REUSED. STRUCTURE TO BE REMOVED AS SHOWN WITH NO SALVAGE.



FULL SIZE PLANS HAVE BEEN PREPARED USING STANDARD ENGINEERING SCALES. REDUCED SIZED PLANS WILL NOT CONFORM TO STANDARD SCALES. IN MAKING MEASUREMENTS ON REDUCED PLANS, THE ABOVE SCALES MAY BE USED.



420 NORTH FRONT STREET, SUITE 100 | McHENRY, ILLINOIS 60050
Phone: 815.385.1778 | Toll Free: 800.728.7805 | Fax: 815.385.1781 | HRGreen.com
ILLINOIS PROFESSIONAL DESIGN FIRM #184-001322



PROJECT ENGINEER: MICHAEL G. HARDING, P.E.
PROJECT MANAGER: ROBERT G. DAVIES, S.E., P.E.
CONTRACT NO. 63620

TRAFFIC DATA

ADT: DOWNER PLACE 7,900 ADT (2008) 9,000 ADT (2030)

POSTED SPEED 30 MPH (EXISTING) 30 MPH (PROPOSED)
DESIGN SPEED 30 MPH (PROPOSED)

DESIGN DESIGNATION FUNCTIONAL CLASSIFICATION - LOCAL STREET (URBAN)

PROGRAM AND OFFICE ENGINEER: CHARLES F. RIDDLE, P.E. (847) 705-4406, SCHAUMBURG, IL

COMPANY NAME: HRGreen
PROJECT CONTACT: Michael G. Harding
DATE PLOTTED: 6/27/2011 5:00:00 PM
FILE NAME: 86090472-01R-001
PLOT DRIVER: pdt-dt
PEN TABLE: STANDARD-TRANS.TBL