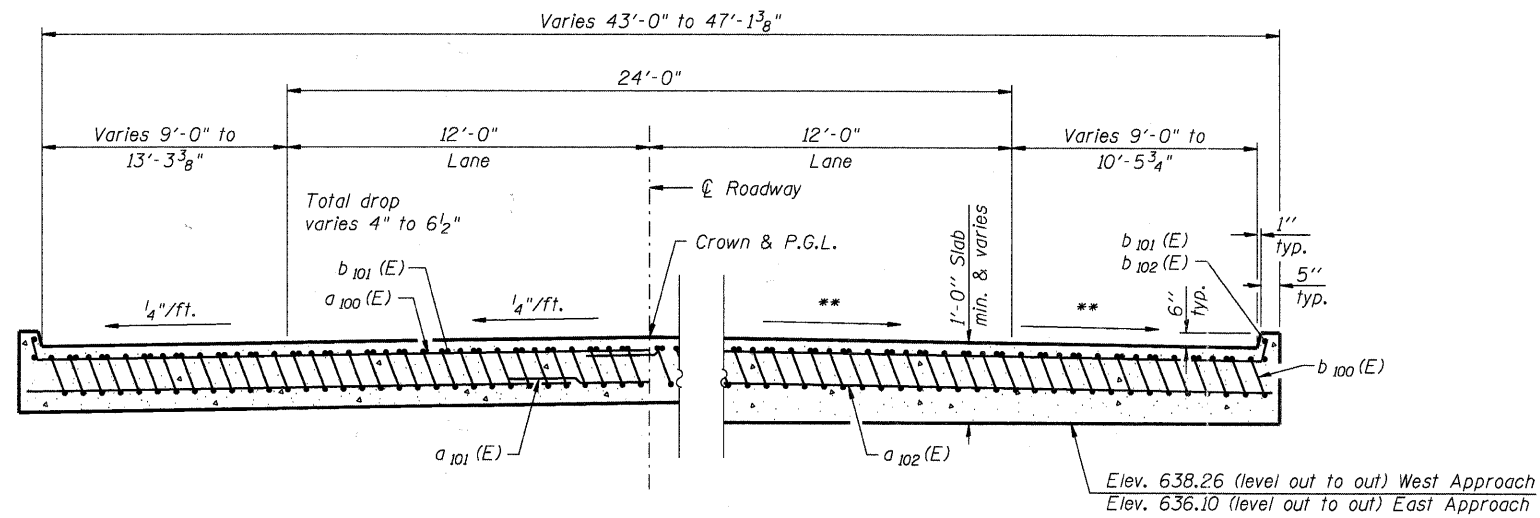


- Notes:
1. See previous sheet for Detail A and View B-B.
 2. Approach slab concrete shall be paid for as Concrete Superstructure.
 3. Reinforcement shall be paid for as Reinforcement Bars, Epoxy Coated.
 4. For v(E) bar details, see sheets SW-31 and SW-35.
 5. The approach footing maximum applied service bearing pressure (Qmax) = 2.0 ksf.
 6. Cost of excavation for approach included with Concrete Superstructure.
 7. For Porous Granular Embankment (Special) and drainage treatment details, see sheet SW-3.



- * Tilt #8 b₁₀₀(E) bars as required to maintain clearance.
- *** Cost included with Concrete Superstructure.

NEAR ABUTMENT

AT CONNECTOR PAVEMENT

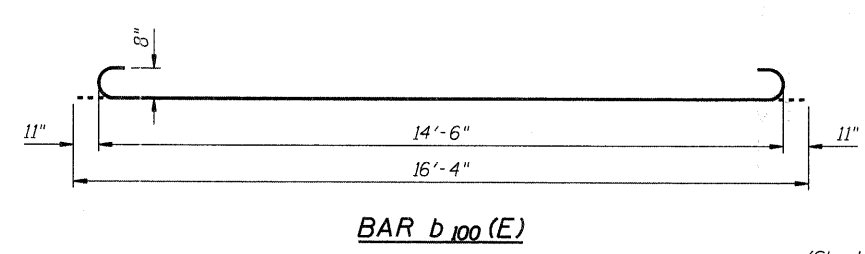
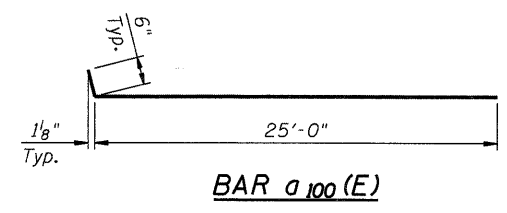
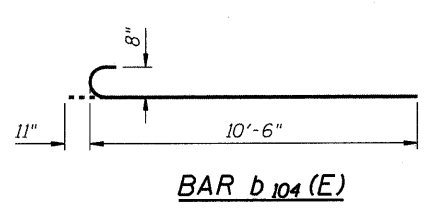
SECTION D-D

(See Plan for dimensions not shown)

- ** Varies 1.5% to 2% West Approach
- Varies 2.2% to 2.6% East Approach

**TWO APPROACHES
BILL OF MATERIAL**

Bar	No.	Size	Length	Shape
a ₁₀₀ (E)	52	#4	25'-6"	—
a ₁₀₁ (E)	48	#5	20'-6"	—
a ₁₀₂ (E)	48	#5	30'-0"	—
a ₁₀₃ (E)	8	#5	6'-0"	—
b ₁₀₀ (E)	168	#8	16'-4"	—
b ₁₀₁ (E)	73	#4	14'-6"	—
b ₁₀₂ (E)	1	#4	11'-6"	—
b ₁₀₃ (E)	5	#4	7'-2"	—
b ₁₀₄ (E)	12	#8	11'-5"	—
Concrete Superstructure			Cu. Yd.	51.6
Bridge Deck Grooving			Sq. Yd.	138
Protective Coat			Sq. Yd.	150
Reinforcement Bars, Epoxy Coated			Pound	11,890



(Sheet 2 of 2)

HRGreen
Company Name: HRGreen
Project Contact: [Name]
Client: [Name]
Date Plotted: 7/26/2011 10:59:24 AM
File Name: 86090412-W-AS02.dwg
Plot Driver: pcf.plt
Pen Table: Struct_20x34.tbl

HRGreen.com
Illinois Professional Design Firm
#184-001322

USER NAME = whood	DESIGNED - KMA	REVISED -
PLOT SCALE = N.T.S.	CHECKED - RGD	REVISED -
PLOT DATE = 7/26/2011	DRAWN - WJH	REVISED -
	CHECKED -	REVISED -

CITY OF AURORA
DOWNER PLACE OVER THE WEST BRANCH
OF THE FOX RIVER

BRIDGE APPROACH SLAB DETAILS
STRUCTURE NO. 045-6006

F.A. RTE.	SECTION	COUNTY	TOTAL SHEETS	SHEET NO.
	07-00264-00-BR	KANE	164	61
			CONTRACT NO. 63620	
[ILLINOIS] FED. AID PROJECT				

SHEET NO. SW-9 OF SW-48 SHEETS