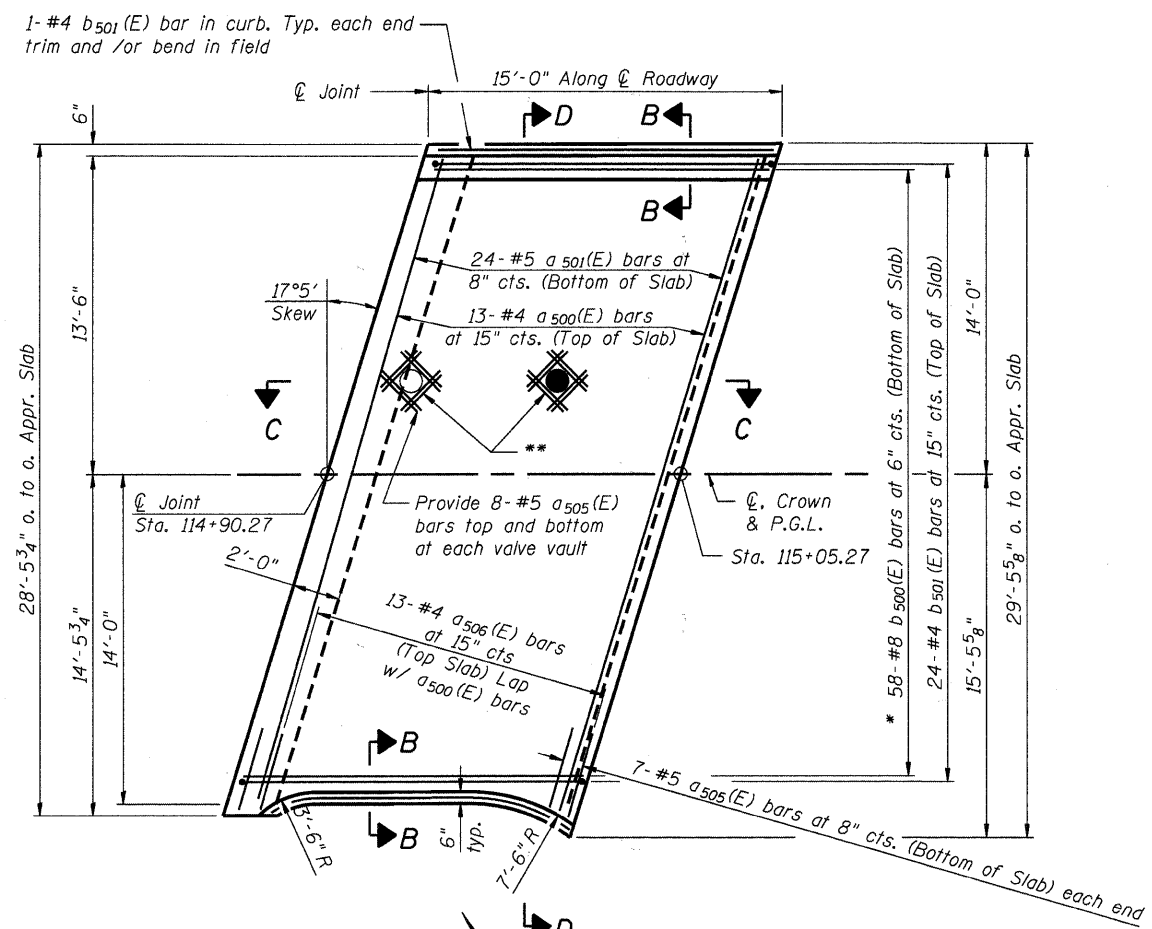
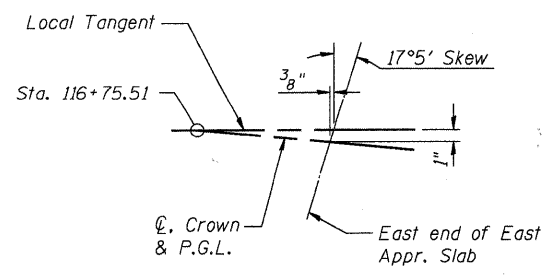


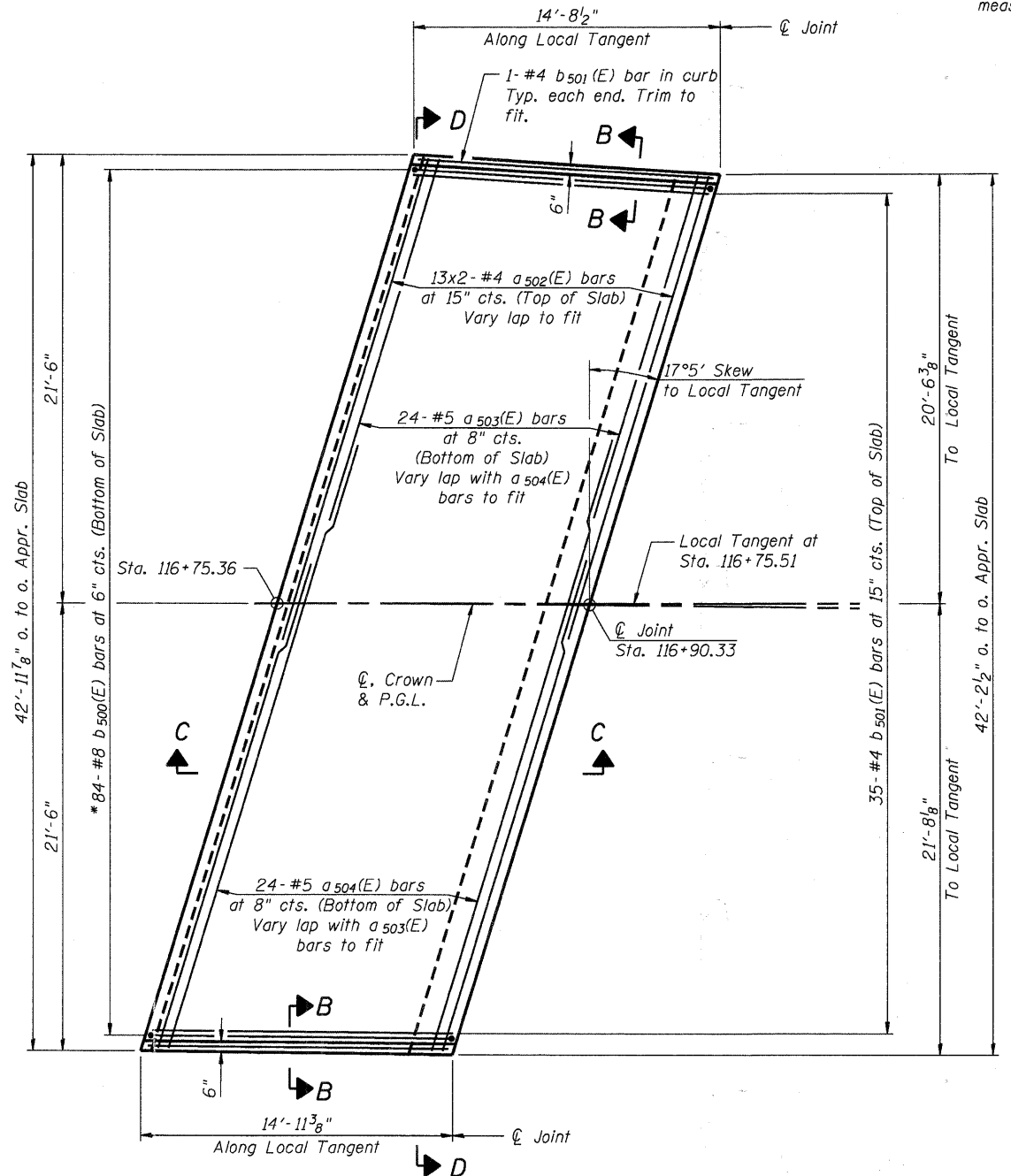
- Notes:
 1. See next sheet for Sections C-C & D-D.
 2. $a_{500}(E)$, $a_{501}(E)$, $a_{502}(E)$, $a_{503}(E)$ and $a_{504}(E)$ bar spacings measured along C.Rdwy.



WEST APPROACH
 See Sheet 23 of the Roadway Plans for additional information



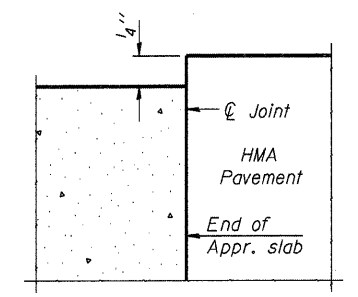
OFFSET SKETCH



EAST APPROACH

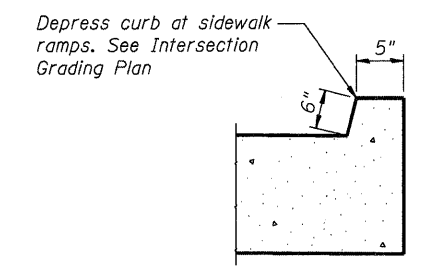
PLAN

- * Tilt #8 b500(E) bars as required to maintain clearance.
- ** Form around existing and proposed water valve vaults. Provide 1/2" P.J.F. at interface around valve frame. Trim reinforcement to fit. Cost of P.J.F. included in "Concrete Superstructure."



FLEXIBLE PAVEMENT

DETAIL A



VIEW B-B

MINIMUM BAR LAP
 #4 bar = 2'-1"
 #5 bar = 2'-7"

(Sheet 1 of 2)

COMPANY NAME: HRGreen
 PROJECT CONTACT: Michael A. Harshbarger
 DATE PLOTTED: 7/26/2011 10:35:41 AM
 FILE NAME: 86090472-E-Asst01.dgn
 PLOT DRIVER: default
 PEN TABLE: Struct 22x34.tbl



USER NAME = whood	DESIGNED - KMA	REVISED -
PLOT SCALE = N.T.S.	CHECKED - RGD	REVISED -
PLOT DATE = 7/26/2011	DRAWN - WJH	REVISED -
	CHECKED -	REVISED -

CITY OF AURORA
DOWNER PLACE OVER THE EAST BRANCH
OF THE FOX RIVER

BRIDGE APPROACH SLAB DETAILS
STRUCTURE NO. 045-6005
 SHEET NO. SE-8 OF SE-45 SHEETS

F.A. RTE.	SECTION	COUNTY	TOTAL SHEETS	SHEET NO.
	07-00264-00-BR	KANE	164	108
			CONTRACT NO. 63620	
[ILLINOIS] FED. AID PROJECT				