

F.A.U. RTE.	SECTION	COUNTY	TOTAL SHEETS	SHEET NO.
374	10-00111-00-LS	COOK	62	1
FED. ROAD DIST. NO.	ILLINOIS	CONTRACT NO. 63622		

STATE OF ILLINOIS  
DEPARTMENT OF TRANSPORTATION  
DIVISION OF HIGHWAYS

**PLANS FOR PROPOSED  
FEDERAL AID HIGHWAY**

FAP 374 (ILLINOIS ROUTE 21 – MILWAUKEE AVENUE)  
NEVA AVENUE TO MONROE STREET

STREETSCAPE IMPROVEMENTS  
SECTION NO.: 10-00111-00-LS  
PROJECT NO.: TCSP-TE-00D1(827)  
VILLAGE OF NILES  
COOK COUNTY  
C-91-550-10

FOR INDEX OF SHEETS, SEE SHEET NO. 2



LOCATION OF SECTION INDICATED THIS: - [Symbol]

**TRAFFIC DATA**

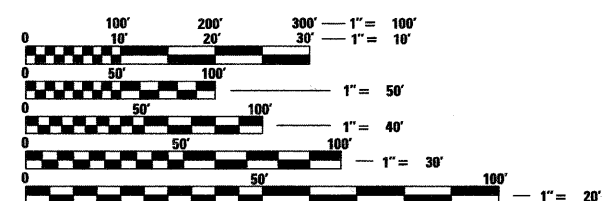
ADT: MILWAUKEE AVE.. 36,400 VPD (2007) 38,000 VPD (2030)

**POSTED SPEED**

35 MPH (EXISTING)  
35 MPH (PROPOSED)

**DESIGN SPEED**

40 MPH (PROPOSED)



FULL SIZE PLANS HAVE BEEN PREPARED USING STANDARD ENGINEERING SCALES. REDUCED SIZED PLANS WILL NOT CONFORM TO STANDARD SCALES. IN MAKING MEASUREMENTS ON REDUCED PLANS, THE ABOVE SCALES MAY BE USED.

**J.U.L.I.E.**  
JOINT UTILITY LOCATION INFORMATION FOR EXCAVATION CALL 811

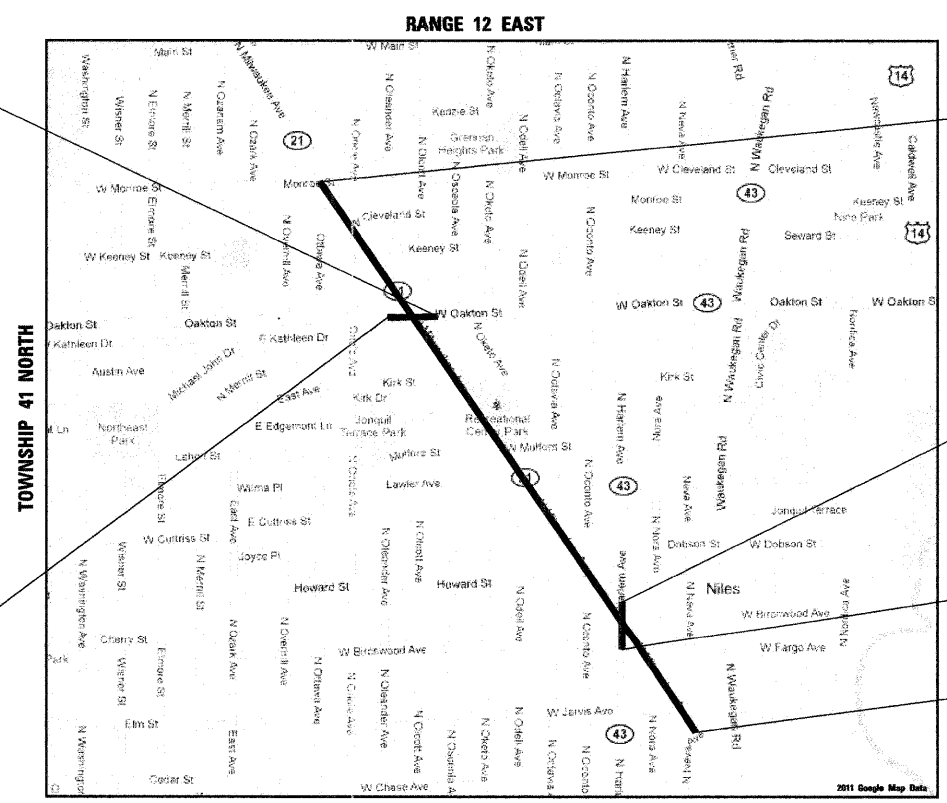
420 NORTH FRONT STREET, SUITE 100 | MCHENRY, ILLINOIS 60050  
Phone: 815.385.1778 | Toll Free: 800.728.7805 | Fax: 815.385.1781 | HRGreen.com  
ILLINOIS PROFESSIONAL DESIGN FIRM #184-001322

PROJECT ENGINEER: CHRISTOPHER HARTKE, P.E.  
PROJECT MANAGER: AKRAM CHAUDHRY, P.E.

CONTRACT NO. 63622

PROJECT ENDS  
OAKTON STREET  
STA. 506 + 00.00

PROJECT BEGINS  
OAKTON STREET  
STA. 500 + 85.00



PROJECT LOCATION MAP  
N.T.S.

**PROJECT LENGTH**

NET LENGTH OF PROJECT = 7,537 FT (1.43 MI)  
GROSS LENGTH OF PROJECT = 7,537 FT (1.43 MI)

PROJECT ENDS  
MILWAUKEE AVENUE  
STA. 231 + 65.00

PROJECT ENDS  
HARLEM AVENUE  
STA. 98 + 00.00

PROJECT BEGINS  
HARLEM AVENUE  
STA. 92 + 65.00

PROJECT BEGINS  
MILWAUKEE AVENUE  
STA. 166 + 75.00

STATE OF ILLINOIS  
DEPARTMENT OF TRANSPORTATION  
DIVISION OF HIGHWAYS

APPROVED 7-20 2011  
*[Signature]*  
VILLAGE OF NILES

PASSED July 20 2011  
*[Signature]*  
DISTRICT ONE ENGINEER OF LOCAL ROADS AND STREETS

RELEASING FOR BID  
BASED ON LIMITED REVIEW JULY 21 2011  
*[Signature]*  
DEPUTY DIRECTOR OF HIGHWAYS, REGION ONE ENGINEER

PROFESSIONAL ENGINEER'S SIGN & SEAL

*[Signature]*  
M. AKRAM CHAUDHRY, P.E.  
EXPIRES: 11-30-11

**PRINTED BY THE AUTHORITY  
OF THE STATE OF ILLINOIS**

PROGRAM AND OFFICE ENGINEER: CHARLES F. RIDDLE, P.E. 847-705-4406  
SCHAUMBURG, IL

COMPANY NAME: #COMPANY-NAME  
PROJECT CONTACT: #PROJECT-CONTACT  
CLIENT: #CLIENT  
DATE PLOTTED: 7/20/2011 9:07:16 AM  
FILE NAME: 86000085-cvr-09n  
PLOT DRIVER: McHenry-1060-plotter-AS-15.plt  
PEN TABLE: STANDARD-TRANS.tbl