

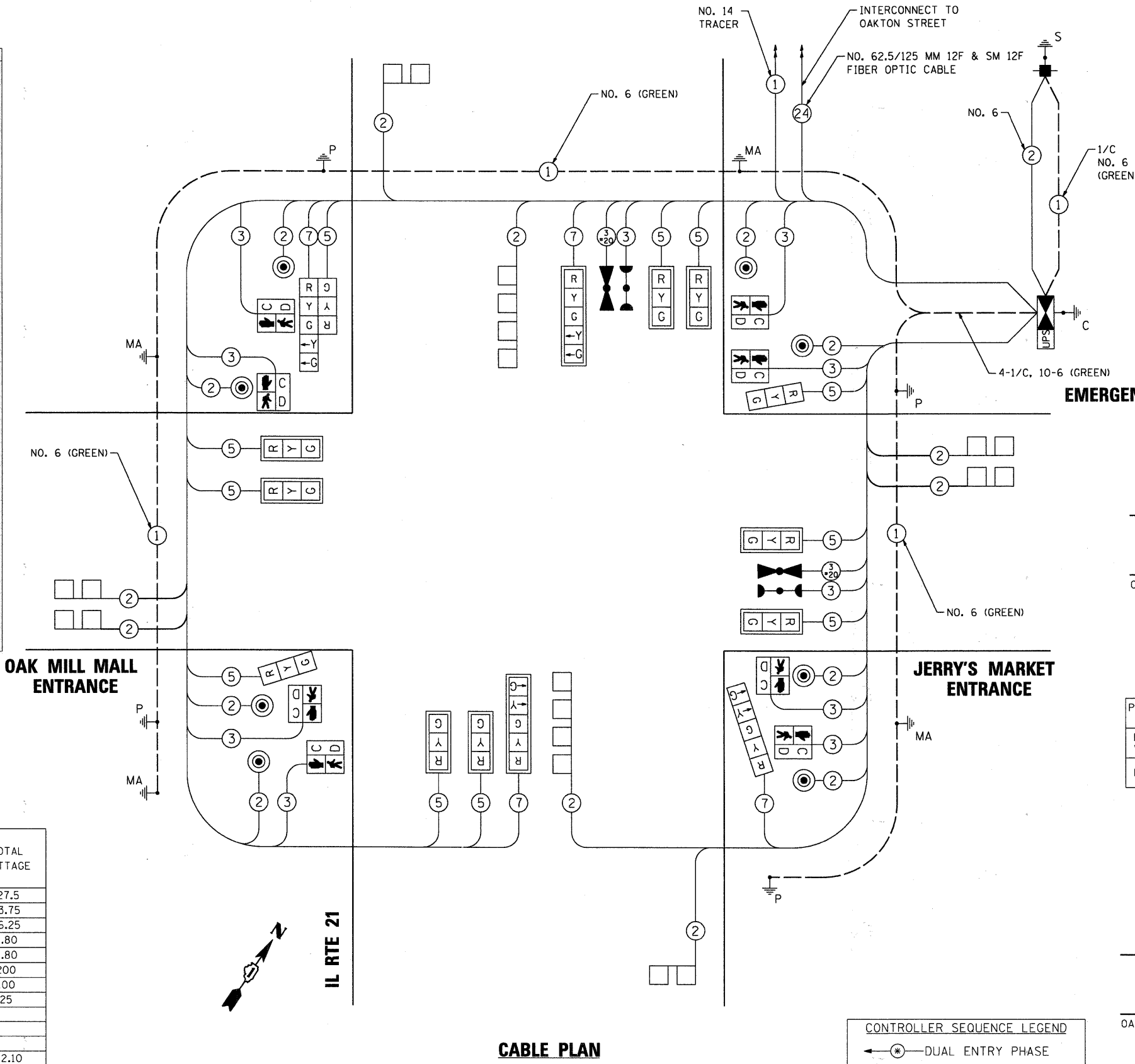
SCHEDULE OF QUANTITIES

ITEM	UNIT	TOTAL
SIGN PANEL - TYPE 2	SQ FT	32.5
SERVICE INSTALLATION - POLE MOUNTED	EACH	1
CONDUIT IN TRENCH, 2" DIA., GALVANIZED STEEL	FOOT	144
CONDUIT IN TRENCH, 2 1/2" DIA., GALVANIZED STEEL	FOOT	51
CONDUIT IN TRENCH, 3" DIA., GALVANIZED STEEL	FOOT	61
CONDUIT IN TRENCH, 4" DIA., GALVANIZED STEEL	FOOT	22
CONDUIT PUSHED, 2" DIA., GALVANIZED STEEL	FOOT	164
CONDUIT PUSHED, 4" DIA., GALVANIZED STEEL	FOOT	337
HANDHOLE	EACH	2
HEAVY-DUTY HANDHOLE	EACH	4
DOUBLE HANDHOLE	EACH	2
TRENCH AND BACKFILL FOR ELECTRICAL WORK	FOOT	236
MAINTENANCE OF EXISTING TRAFFIC SIGNAL INSTALLATION	EACH	1
PAINT NEW TRAFFIC SIGNAL POST	EACH	4
PAINT NEW MAST ARM AND POLE, UNDER 40 FOOT	EACH	4
FULL-ACTUATED CONTROLLER AND TYPE IV CABINET, SPECIAL	EACH	1
UNINTERRUPTIBLE POWER SUPPLY	EACH	1
ELECTRIC CABLE IN CONDUIT, SIGNAL, NO. 14 2C	FOOT	2,592.0
ELECTRIC CABLE IN CONDUIT, SIGNAL, NO. 14 3C	FOOT	1,610.0
ELECTRIC CABLE IN CONDUIT, SIGNAL, NO. 14 5C	FOOT	2,191.5
ELECTRIC CABLE IN CONDUIT, SIGNAL, NO. 14 7C	FOOT	783.0
ELECTRIC CABLE IN CONDUIT, SERVICE, NO. 6 2C	FOOT	674.5
ELECTRIC CABLE IN CONDUIT, EQUIPMENT GROUNDING CONDUCTOR, NO. 6 1C	FOOT	1,726.5
TRAFFIC SIGNAL POST, GALVANIZED STEEL, 14 FT.	EACH	2
TRAFFIC SIGNAL POST, GALVANIZED STEEL, 16 FT.	EACH	2
STEEL MAST ARM ASSEMBLY AND POLE, 22 FT.	EACH	1
STEEL MAST ARM ASSEMBLY AND POLE, 30 FT.	EACH	1
STEEL MAST ARM ASSEMBLY AND POLE, 32 FT.	EACH	1
STEEL MAST ARM ASSEMBLY AND POLE, 36 FT.	EACH	1
CONCRETE FOUNDATION, TYPE A	FOOT	16
CONCRETE FOUNDATION, TYPE C	FOOT	4
CONCRETE FOUNDATION, TYPE E 30-INCH DIAMETER	FOOT	10
CONCRETE FOUNDATION, TYPE E 36-INCH DIAMETER	FOOT	33
DRILL EXISTING HANDHOLE	FOOT	2
SIGNAL HEAD, LED, 1-FACE, 3-SECTION, MAST-ARM MOUNTED	EACH	8
SIGNAL HEAD, LED, 1-FACE, 3-SECTION, BRACKET MOUNTED	EACH	2
SIGNAL HEAD, LED, 1-FACE, 5-SECTION, BRACKET MOUNTED	EACH	1
SIGNAL HEAD, LED, 1-FACE, 5-SECTION, MAST-ARM MOUNTED	EACH	2
SIGNAL HEAD, LED, 2-FACE, 1-3 SECTION, 1-5 SECTION, BRACKET MOUNTED	EACH	1
PEDESTRIAN SIGNAL HEAD, LED, 1-FACE, BRACKET MOUNTED WITH COUNTDOWN TIMER	EACH	8
TRAFFIC SIGNAL BACKPLATE, LOUVERED	EACH	10
DETECTOR LOOP, TYPE 1	FOOT	1,194
LIGHT DETECTOR	EACH	2
PEDESTRIAN PUSH-BUTTON	EACH	8
TEMPORARY TRAFFIC SIGNAL INSTALLATION	EACH	1
REMOVE ELECTRIC CABLE FROM CONDUIT	FOOT	5,724.5
REMOVE EXISTING TRAFFIC SIGNAL EQUIPMENT	EACH	1
REMOVE EXISTING HANDHOLE	EACH	7
REMOVE EXISTING DOUBLE HANDHOLE	EACH	1
REMOVE EXISTING CONCRETE FOUNDATION	EACH	9
ELECTRIC CABLE IN CONDUIT, NO. 20 3/C, TWISTED, SHIELDED	FOOT	124.5

I.D.O.T TRAFFIC SIGNAL INSTALLATION ELECTRICAL SERVICE REQUIREMENTS					TOTAL WATTAGE
TYPE	NO. LAMPS	WATTAGE		% OPERATION	
		INCAND.	LED		
SIGNAL (RED)	15		17	0.50	127.5
(YELLOW)	15		25	0.25	93.75
(GREEN)	15		15	0.25	56.25
ARROW (YELLOW)	4		12	0.10	4.80
ARROW (GREEN)	4		12	0.10	4.80
PEDESTRIAN SIGNAL	8		25	1.00	200
CONTROLLER	1		100	1.00	100
UPS	1		25	1.00	25
TOTAL =					612.10

ENERGY COSTS TO: VILLAGE OF NILES
1000 CIVIC CENTER DRIVE
NILES, IL 60714

ENERGY SUPPLY CONTACT: MAUREEN RAYE
PHONE: (847) 816-5492
COMPANY: COMMONWEALTH EDISON



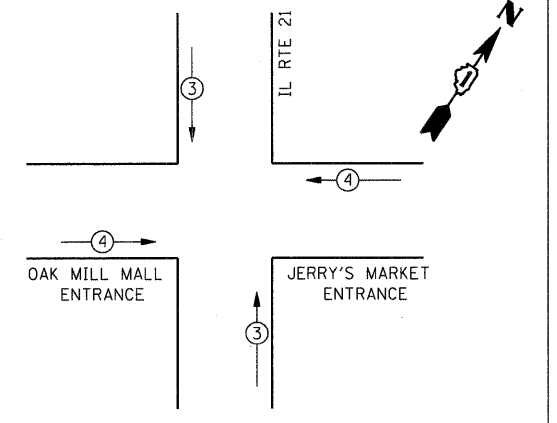
CABLE PLAN

NOTE:
THE END OF THE TRACER CABLE SHALL BE CONTINUOUS AND EXTEND INTO THE CONTROLLER CABINET.

NOTE:
THE TRAFFIC SIGNAL CONTROL EQUIPMENT FOR THIS PROJECT SHALL BE "EAGLE" TO MATCH THE EXISTING ADJACENT SYSTEM.

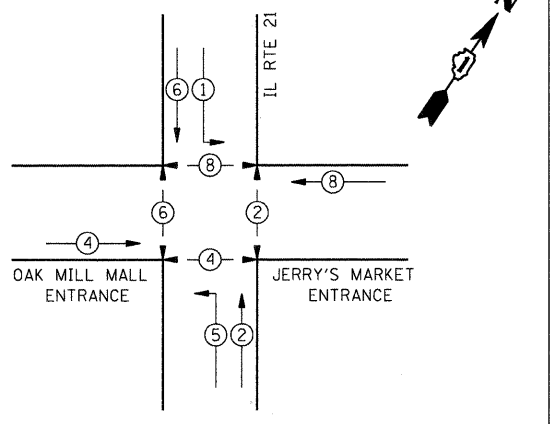
NOTE:
THE EMERGENCY VEHICLE PREEMPTION EQUIPMENT FOR THIS PROJECT SHALL BE TOMAR OR AN APPROVED EQUAL.

EMERGENCY VEHICLE PREEMPTION SEQUENCE

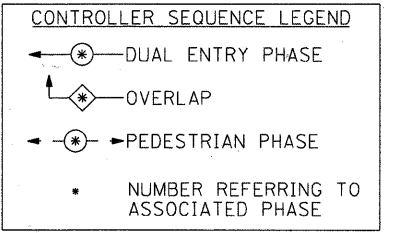


PROPOSED EMERGENCY VEHICLE PREEMPTORS		
PROPOSED EMERGENCY VEHICLE PREEMPTORS	3	4
MOVEMENT	↑	←

CONTROLLER SEQUENCE



PHASE DESIGNATION DIAGRAM



COMPANY NAME: HRGreen.com
PROJECT CONTACT: #PROJECT_CONTACT1
CLIENT: #CLIENT1
DATE PLOTTED: 7/20/2011 4:19:06 PM
FILE NAME: 86100065-sigcab01.dgn
PLOT DRIVER: pdfplot
PEN TABLE: standard-trans.tbl



USER NAME = Charko	DESIGNED - JJS	REVISED -
PLOT SCALE = NTS	DRAWN - JJS	REVISED -
PLOT DATE = 7/20/2011	CHECKED - PAM	REVISED -
	DATE -	REVISED -

STATE OF ILLINOIS
DEPARTMENT OF TRANSPORTATION

CABLE PLAN AND PHASE DESIGNATION DIAGRAM
MILWAUKEE AVE AT OAK MILL MALL ENTRANCE

SCALE: NTS SHEET NO. 6 OF 8 SHEETS STA. TO STA.

F.A.P. RTE.	SECTION	COUNTY	TOTAL SHEETS	SHEET NO.
374	10-00111-00-LS	COOK	62	54
FED. ROAD DIST. NO. ILLINOIS FED. AID PROJECT			CONTRACT NO. 63622	