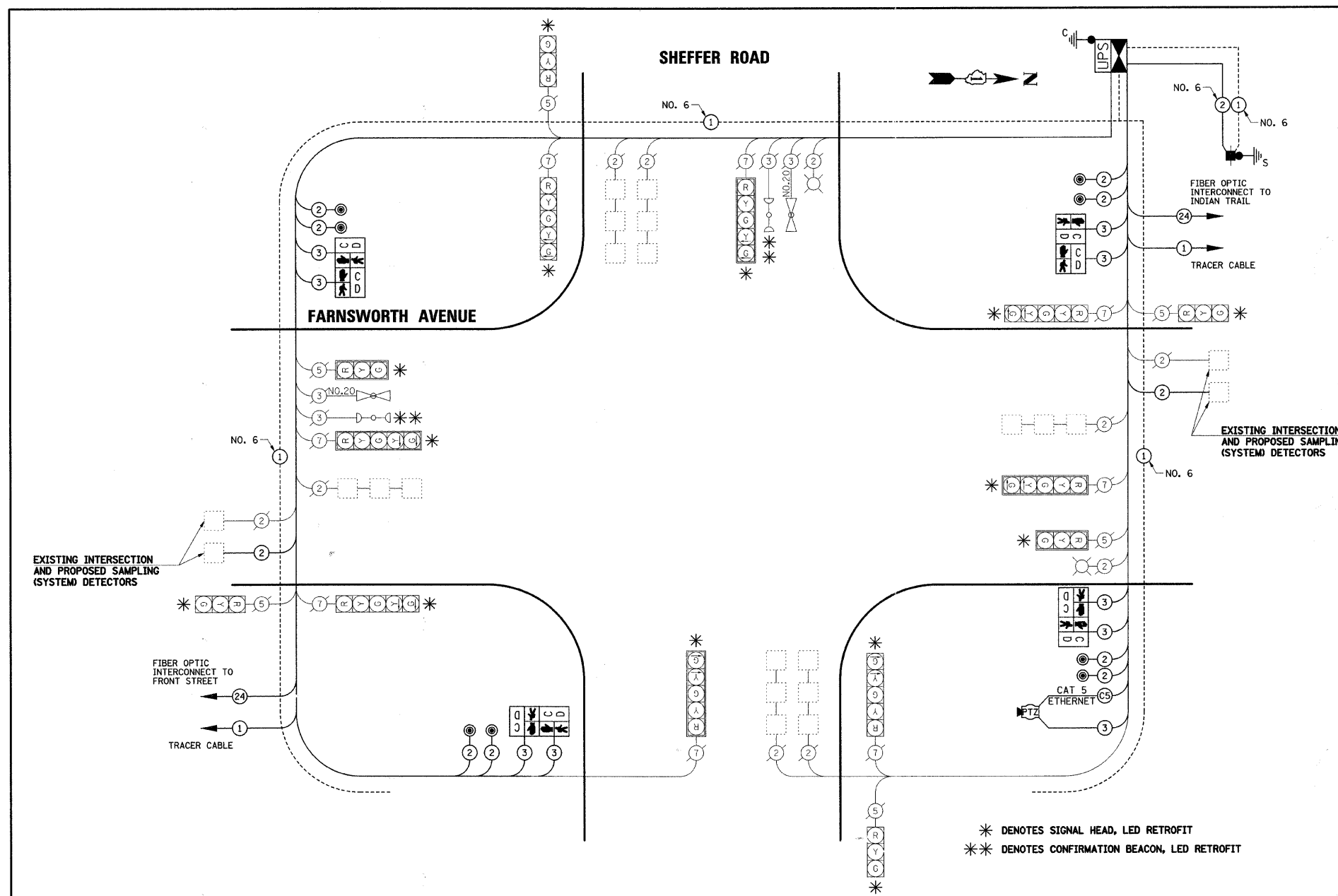


DATE	
BY	
PLAN	
REVISIONS	
NO.	
DATE	
BY	
PROFILE	
REVISIONS	
NO.	
DATE	
BY	

DATE	
BY	
PROFILE	
REVISIONS	
NO.	
DATE	
BY	



* DENOTES SIGNAL HEAD, LED RETROFIT
 ** DENOTES CONFIRMATION BEACON, LED RETROFIT

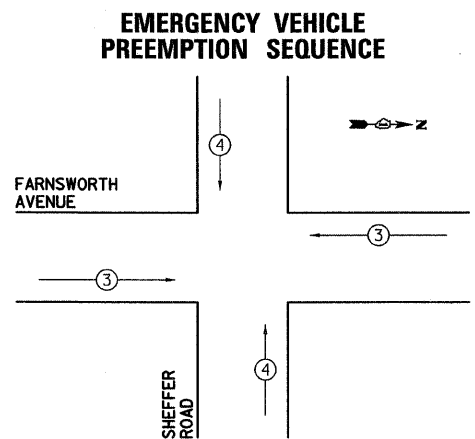
SCHEDULE OF QUANTITIES

PAY ITEM DESCRIPTION	UNIT	SHEFFER ROAD
SERVICE INSTALLATION - POLE MOUNTED	EACH	1
MAINTENANCE OF EXISTING TRAFFIC SIGNAL INSTALLATION	EACH	1
FULL-ACTUATED CONTROLLER AND TYPE IV CABINET, SPECIAL	EACH	1
UNINTERRUPTABLE POWER SUPPLY	EACH	1
GROUNDING EXISTING HANDHOLE FRAME AND COVER	EACH	6
ELECTRIC CABLE IN CONDUIT, SIGNAL NO. 14 2C	FOOT	1136
ELECTRIC CABLE IN CONDUIT, SIGNAL NO. 14 3C	FOOT	1389.5
ELECTRIC CABLE IN CONDUIT, LEAD-IN, NO. 14 1 PAIR	FOOT	1206.5
ELECTRIC CABLE IN CONDUIT, SERVICE, NO. 6 2 C	FOOT	170.5
ELECTRIC CABLE IN CONDUIT, EQUIPMENT GROUNDING CONDUCTOR, NO. 6 1C	FOOT	660.5
PEDESTRIAN SIGNAL HEAD, LED, 2-FACE, BRACKET MOUNTED WITH COUNTDOWN TIMER	EACH	4
INDUCTIVE LOOP DETECTOR	EACH	10
DETECTOR LOOP, TYPE I	FOOT	40
LIGHT DETECTOR AMPLIFIER	EACH	2
PEDESTRIAN PUSH-BUTTON	EACH	8
MODIFY EXISTING CONTROLLER FOUNDATION	EACH	1
REMOVE ELECTRIC CABLE FROM CONDUIT	FOOT	2256.5
REMOVE EXISTING TRAFFIC SIGNAL EQUIPMENT	EACH	1
CAT 5 ETHERNET CABLE	FOOT	197.5
SIGNAL HEAD, LED, 1-FACE, 3-SECTION, BRACKET MOUNTED, RETROFIT	EACH	4
SIGNAL HEAD, LED, 1-FACE, 3-SECTION, MAST ARM MOUNTED, RETROFIT	EACH	2
SIGNAL HEAD, LED, 1-FACE, 5-SECTION, MAST ARM MOUNTED, RETROFIT	EACH	4
INTERSECTION VIDEO TRAFFIC MONITORING SYSTEM WITH PTZ CAMERA	EACH	1
SIGNAL HEAD, LED, 5-SECTION, BRACKET MOUNTED, RETROFIT	EACH	4
EVP CONFIRMATION BEACON, LED RETROFIT	EACH	2

I.D.O.T TRAFFIC SIGNAL INSTALLATION ELECTRICAL SERVICE REQUIREMENTS				
TYPE	NO. LAMPS	WATTAGE		TOTAL WATTAGE
		INCAND.	LED	
SIGNAL (RED)	14	17	0.50	119
(YELLOW)	14	25	0.25	87.5
(GREEN)	14	15	0.25	52.5
ARROW	16	12	0.10	19.2
PED. SIGNAL	8	25	1.00	200
CONTROLLER	1	100	1.00	100
LUMINAIRE	2	250	0.50	250
TOTAL =				828.2

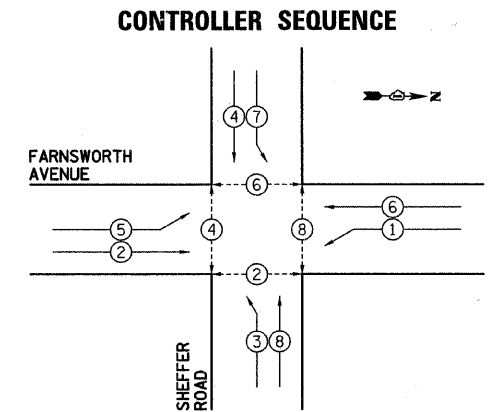
ENERGY COSTS TO: CITY OF AURORA
 44 E. DOWNER PLACE
 AURORA, ILLINOIS 60507-2067

ENERGY SUPPLY CONTACT: MARK SCHERIBEL
 PHONE: (630) 723-2128
 COMPANY: COMMONWEALTH EDISON



PROPOSED EMERGENCY VEHICLE PREEMPTORS	
PROPOSED EMERGENCY VEHICLE PREEMPTORS	3 4
MOVEMENT	← →

CONTROLLER SEQUENCE LEGEND	
← *	DUAL ENTRY PHASE
← *	SINGLE ENTRY PHASE
← *	OVERLAP
*	NUMBER REFERRING TO ASSOCIATED PHASE
← *	PEDESTRIAN PHASE



THE END OF THE TRACER CABLE SHALL BE CONTINUOUS AND EXTEND INTO THE CONTROLLER CABINET.

THE TRAFFIC SIGNAL CONTROL EQUIPMENT FOR THIS PROJECT SHALL BE "ECONOLITE" TO MATCH THE EXISTING ADJACENT SYSTEM.