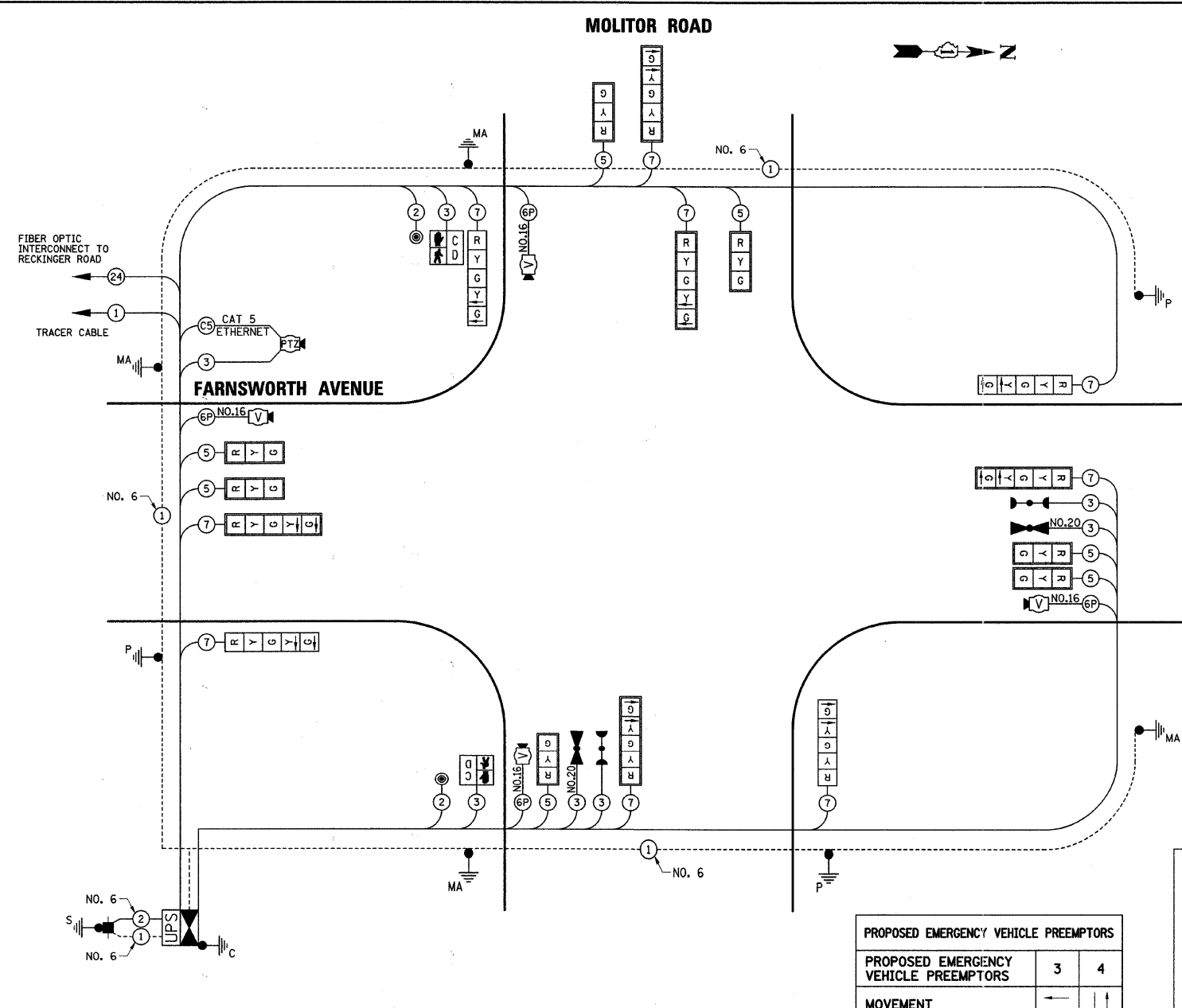


DATE	
BY	
PLAN	
NO.	
DATE	
BY	
PROFILE	
NO.	
DATE	
BY	
PROFILE	
NO.	

DATE	
BY	
PROFILE	
NO.	
DATE	
BY	
PROFILE	
NO.	



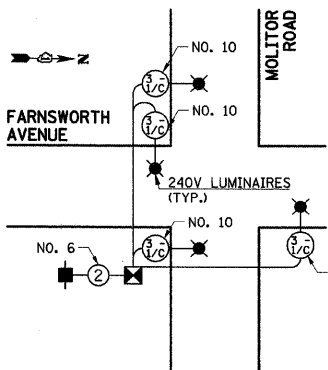
I.D.O.T TRAFFIC SIGNAL INSTALLATION ELECTRICAL SERVICE REQUIREMENTS					
TYPE	NO. LAMPS	WATTAGE		% OPERATION	TOTAL WATTAGE
		INCAND.	LED		
SIGNAL (RED)	16	17	0.50	136	
(YELLOW)	16	25	0.25	100	
(GREEN)	16	15	0.25	60	
ARROW	18	12	0.10	21.6	
PED. SIGNAL	2	25	1.00	50	
CONTROLLER	1	100	1.00	100	
VIDEO SYSTEM	1	15	1.00	15	
LUMINAIRE	4	250	0.50	500	
TOTAL =				982.6	

ENERGY COSTS TO: CITY OF AURORA
44 E. DOWNER PLACE
AURORA, ILLINOIS 60507-2067

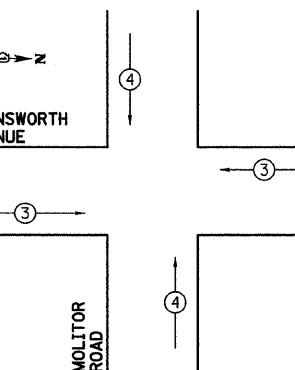
ENERGY SUPPLY CONTACT: MARK SCHERIBEL
PHONE: (630) 723-2128
COMPANY: COMMONWEALTH EDISON

PROPOSED EMERGENCY VEHICLE PREEMPTORS	
MOVEMENT	3 4
←	←
→	→

LIGHTING CABLE PLAN

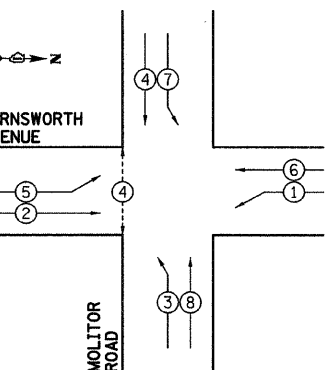


EMERGENCY VEHICLE PREEMPTION SEQUENCE



CONTROLLER SEQUENCE LEGEND	
←*	DUAL ENTRY PHASE
→*	SINGLE ENTRY PHASE
←*→	OVERLAP
*	NUMBER REFERRING TO ASSOCIATED PHASE
←*→	PEDESTRIAN PHASE

CONTROLLER SEQUENCE



PHASE DESIGNATION DIAGRAM

SCHEDULE OF QUANTITIES

SIGN PANEL - TYPE 1	SQ FT	16
SIGN PANEL - TYPE 2	SQ FT	21
ELECTRIC SERVICE INSTALLATION	EACH	1
SERVICE INSTALLATION - POLE MOUNTED	EACH	1
CONDUIT IN TRENCH, 2" DIA., GALVANIZED STEEL	FOOT	34
CONDUIT IN TRENCH, 2 1/2" DIA., GALVANIZED STEEL	FOOT	41
CONDUIT IN TRENCH, 3" DIA., GALVANIZED STEEL	FOOT	66
CONDUIT IN TRENCH, 4" DIA., GALVANIZED STEEL	FOOT	64
CONDUIT PUSHED, 2 1/2" DIA., GALVANIZED STEEL	FOOT	7
CONDUIT PUSHED, 3" DIA., GALVANIZED STEEL	FOOT	7
CONDUIT PUSHED, 4" DIA., GALVANIZED STEEL	FOOT	177
HANDHOLE	EACH	3
DOUBLE HANDHOLE	EACH	1
ELECTRIC CABLE IN CONDUIT, 600V (XLP-TYPE USE) 3-1/C NO. 10	FOOT	705.5
TRENCH AND BACKFILL FOR ELECTRICAL WORK	FOOT	186
LUMINAIRE, SODIUM VAPOR, HORIZONTAL MOUNT, 250 WATT	EACH	4
LIGHTING CONTROLLER, PEDESTAL MOUNTED, 240VOLT, 60AMP	EACH	1
MAINTENANCE OF EXISTING TRAFFIC SIGNAL INSTALLATION	EACH	1
PAINT NEW TRAFFIC SIGNAL POST	EACH	3
PAINT NEW COMBINATION MAST ARM AND POLE, UNDER 40 FOOT	EACH	2
PAINT NEW COMBINATION MAST ARM AND POLE, OVER 40 FOOT	EACH	2
FULL-ACTUATED CONTROLLER AND TYPE IV CABINET, SPECIAL UNINTERRUPTABLE POWER SUPPLY	EACH	1
ELECTRIC CABLE IN CONDUIT, SIGNAL NO. 14 2C	FOOT	202.5
ELECTRIC CABLE IN CONDUIT, SIGNAL NO. 14 3C	FOOT	662
ELECTRIC CABLE IN CONDUIT, SIGNAL NO. 14 5C	FOOT	1173.5
ELECTRIC CABLE IN CONDUIT, SIGNAL NO. 14 7C	FOOT	1438.5
ELECTRIC CABLE IN CONDUIT, COMMUNICATION NO. 16 6 PAIR	FOOT	705.5
ELECTRIC CABLE IN CONDUIT, SERVICE, NO. 6 2 C	FOOT	65
ELECTRIC CABLE IN CONDUIT, EQUIPMENT GROUNDING CONDUCTOR, NO. 6 1C	FOOT	509
TRAFFIC SIGNAL POST, GALVANIZED STEEL 16 FT.	EACH	3
STEEL COMBINATION MAST ARM ASSEMBLY AND POLE 30 FT.	EACH	2
STEEL COMBINATION MAST ARM ASSEMBLY AND POLE 40 FT.	EACH	1
STEEL COMBINATION MAST ARM ASSEMBLY AND POLE 44 FT.	EACH	1
CONCRETE FOUNDATION, TYPE A	FOOT	12
CONCRETE FOUNDATION, TYPE C	FOOT	4
CONCRETE FOUNDATION, TYPE E 36-INCH DIAMETER	FOOT	48
SIGNAL HEAD, LED, 1-FACE, 3-SECTION, MAST-ARM MOUNTED	EACH	7
SIGNAL HEAD, LED, 1-FACE, 5-SECTION, BRACKET MOUNTED	EACH	4
SIGNAL HEAD, LED, 1-FACE, 5-SECTION, MAST-ARM MOUNTED	EACH	5
PEDESTRIAN SIGNAL HEAD, LED, 1-FACE, BRACKET MOUNTED WITH COUNTDOWN TIMER	EACH	2
TRAFFIC SIGNAL BACKPLATE, LOUVERED, ALUMINUM	EACH	12
LIGHT DETECTOR	EACH	2
LIGHT DETECTOR AMPLIFIER	EACH	2
PEDESTRIAN PUSH-BUTTON	EACH	2
REMOVE ELECTRIC CABLE FROM CONDUIT	FOOT	7259.5
REMOVE EXISTING TRAFFIC SIGNAL EQUIPMENT	EACH	1
REMOVE EXISTING HANDHOLE	EACH	9
REMOVE EXISTING DOUBLE HANDHOLE	EACH	1
REMOVE EXISTING CONCRETE FOUNDATION	EACH	9
CAT 5 ETHERNET CABLE	FOOT	180
VIDEO DETECTION SYSTEM	EACH	1
ELECTRIC CABLE IN CONDUIT NO. 20 3/C, TWISTED, SHIELDED	FOOT	265.5
INTERSECTION VIDEO TRAFFIC MONITORING SYSTEM WITH PTZ CAMERA	EACH	1

THE END OF THE TRACER CABLE SHALL BE CONTINUOUS AND EXTEND INTO THE CONTROLLER CABINET.

THE TRAFFIC SIGNAL CONTROL EQUIPMENT FOR THIS PROJECT SHALL BE "ECONOLITE" TO MATCH THE EXISTING ADJACENT SYSTEM.

THE EMERGENCY VEHICLE PREEMPTION EQUIPMENT FOR THIS PROJECT SHALL BE OPTICOM AS REQUIRED BY THE CITY OF AURORA. LIGHT DETECTOR AMPLIFIERS SHALL BE OPTICOM MODEL 764 MULTIMODE PHASE SELECTORS.



USER NAME = Mfeller
DESIGNED JRS
DRAWN JRS
CHECKED APS
DATE -
PLOT SCALE =
PLOT DATE = 7/1/2011

REVISIONS:
REVIS -
REVIS -
REVIS -
REVIS -

STATE OF ILLINOIS
DEPARTMENT OF TRANSPORTATION

CABLE PLAN AND
PHASE DESIGNATION DIAGRAM
MOLITOR ROAD

F.A.P. RTE. 360	SECTION 09-00289-00-TL	COUNTY KANE	TOTAL SHEETS 37	SHEET NO. 26
FED. ROAD DIST. NO. [ILLINOIS] FED. AID PROJECT			CONTRACT NO. 63627	

SCALE: SHEET NO. OF SHEETS STA. TO STA.