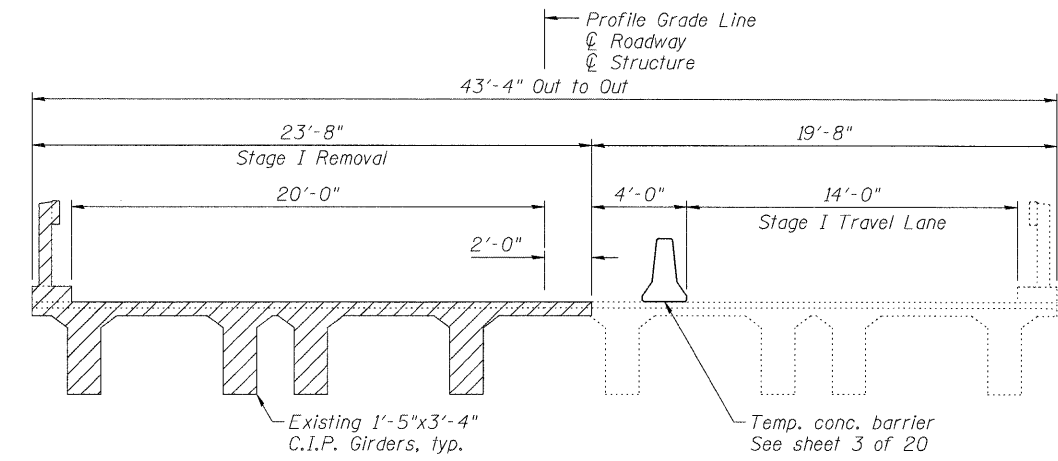
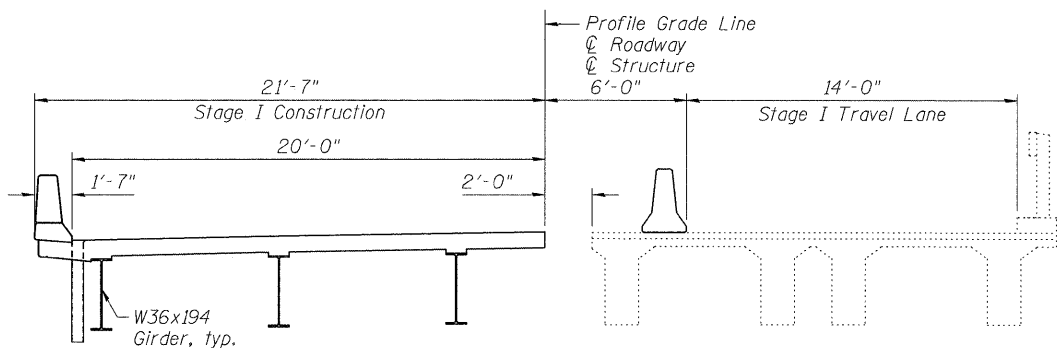


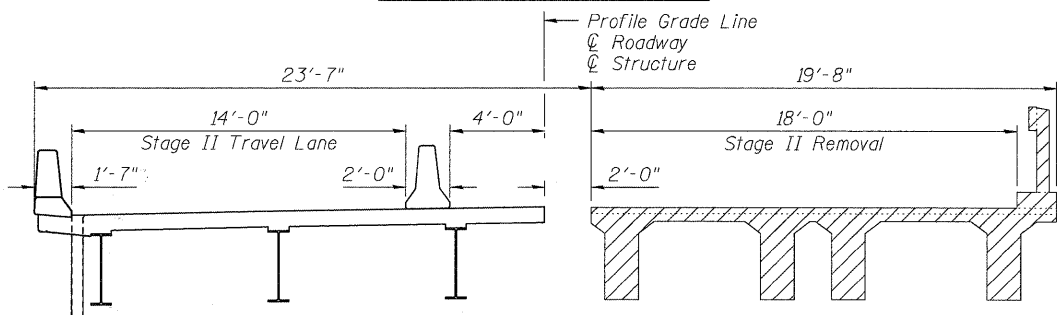
STATE OF ILLINOIS
DEPARTMENT OF TRANSPORTATION



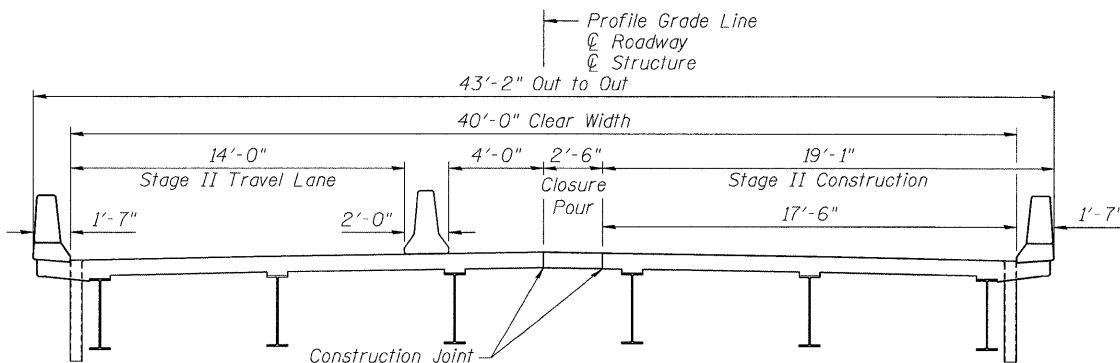
STAGE I REMOVAL



STAGE I CONSTRUCTION



STAGE II REMOVAL

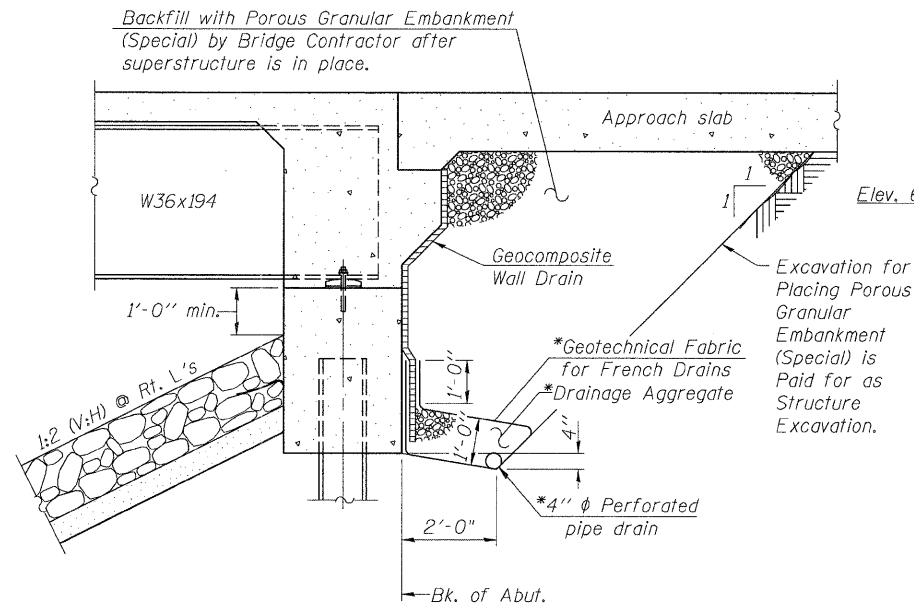


STAGE II CONSTRUCTION & CLOSURE POUR

LEGEND

- Removal of Existing Structures
- Proposed Concrete

Note:
All cross sections are looking East.
Abutment and Approach Slab will not require a Closure Pour.



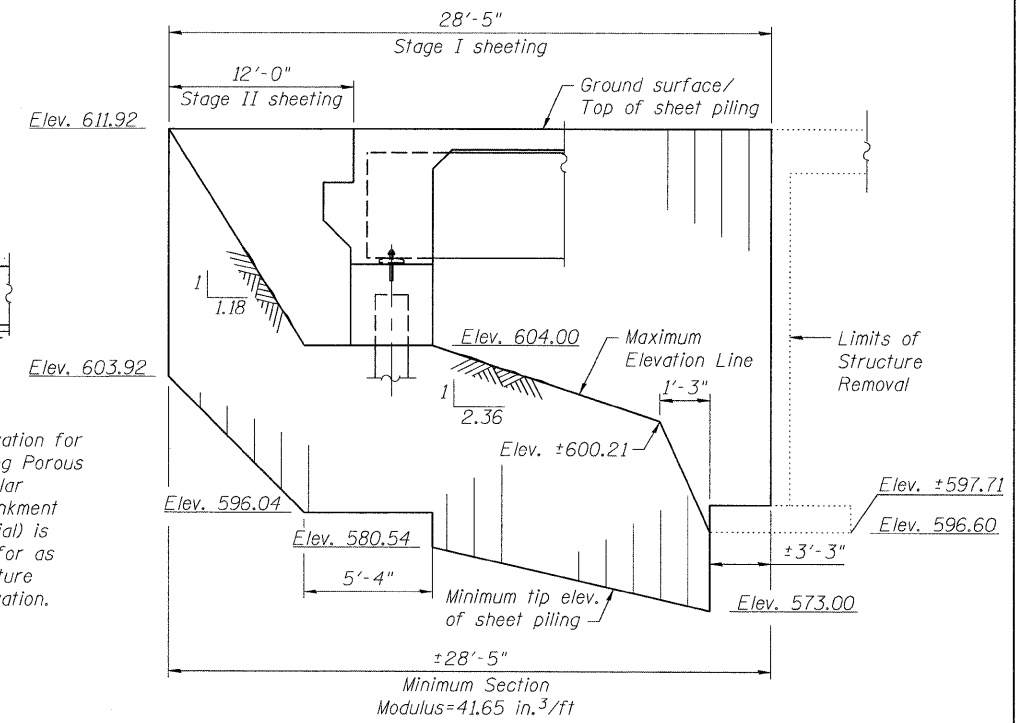
SECTION THRU INTEGRAL ABUTMENT
(Horiz. dim. @ Rt. L's)

*Included in the cost of Pipe Underdrains for Structures, 4".

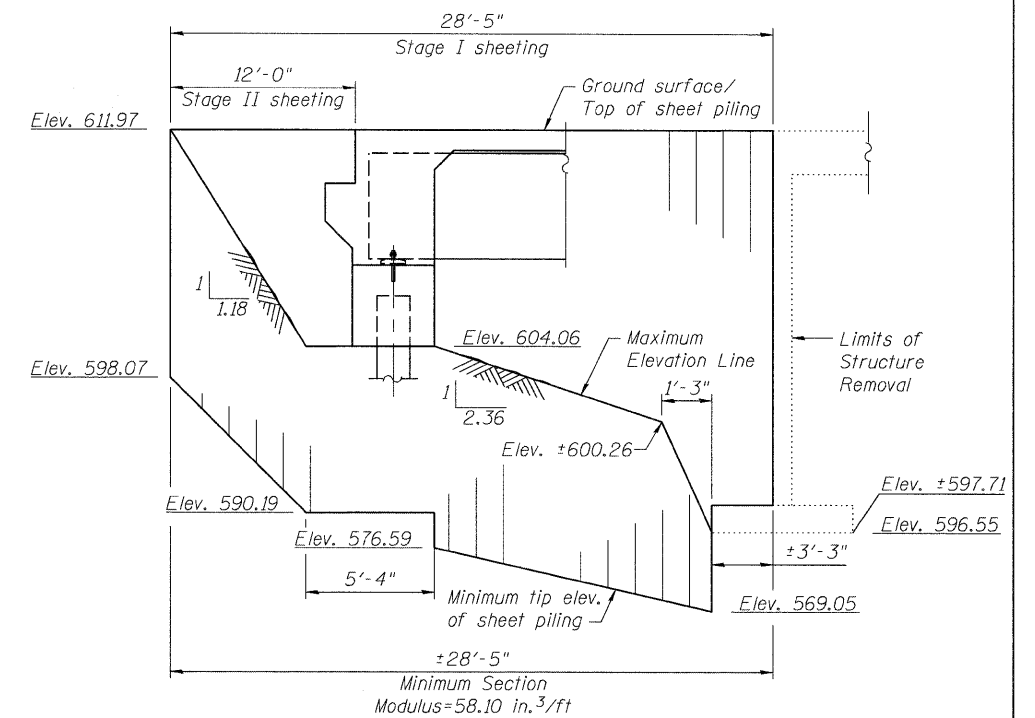
Note:
All drainage system components shall extend to 2'-0" from the end of each wingwall except an outlet pipe shall extend until intersecting with the side slopes. The pipes shall drain into concrete headwalls. (See Article 601.05 of the Standard Specifications and Highway Standard 601101).

TOTAL BILL OF MATERIAL

ITEM	UNIT	SUPER	SUB	TOTAL
Stone Riprap, Class A5	Sq Yd		608	608
Filter Fabric	Sq Yd		608	608
Removal Of Existing Structures	Each		1	1
Structure Excavation	Cu Yd		426	426
Floor Drains	Each	12		12
Concrete Structures	Cu Yd		79	79
Concrete Superstructure	Cu Yd	299		299
Bridge Deck Grooving	Sq Yd	643		643
Concrete Encasement	Cu Yd		6	6
Protective Coat	Sq Yd	810		810
Furnishing And Erecting Structural Steel	L Sum	1		1
Stud Shear Connectors	Each	3,204		3,204
Reinforcement Bars, Epoxy Coated	Pound	63,760	14,040	77,800
Bar Splicers	Each	984	20	1,004
Furnishing Steel Piles HP12x53	Foot		1,316	1,316
Driving Piles	Foot		1,316	1,316
Test Pile Steel HP12x53	Each		2	2
Name Plates	Each	1		1
Anchor Bolts, 1"	Each		24	24
Geocomposite Wall Drain	Sq Yd		100	100
Pipe Underdrains For Structures 4"	Foot		167	167
Porous Granular Embankment, Special	Cu Yd		199	199
Temporary Sheet Piling	Sq Ft		1,370	1,370



WEST ABUTMENT
TEMPORARY SHEET PILING



EAST ABUTMENT
TEMPORARY SHEET PILING

Note:
The Contractor shall connect the first sheet to the existing abutment wall to ensure stability of sheets driven to the top of the existing footing. This connection shall be reviewed and accepted by the Engineer and included in the cost for Temporary Sheet Piling.
If the Contractor chooses to alter the temporary cantilevered sheet piling design requirements shown on the plans, a design submittal including plan details and calculations will be required for review and acceptance by the Engineer.

FILE NAME = s:\jpl\6300-6395\6346\027\micro\final plans\structure\0370174-64C20-002-STAGE.dgn



1170 SOUTH HOUBOLT ROAD JOLIET, ILLINOIS 60431 (815) 744-4200	USER NAME = brianf	DESIGNED MJD	REVISED -
PLOT SCALE =	DRAWN B/JF	CHECKED AJS	REVISED -
PLOT DATE = 7/19/2011	CHECKED R/RD	DRAWN B/JF	REVISED -

STATE OF ILLINOIS
DEPARTMENT OF TRANSPORTATION

SUGGESTED STAGE CONSTRUCTION / GENERAL DETAILS
STRUCTURE NO. 037-0174

SHEET NO. 2 OF 20 SHEETS

F.A.P. RTE. 585	SECTION 128 BR	COUNTY HENRY	TOTAL SHEETS 106	SHEET NO. 46
CONTRACT NO. 64C20				ILLINOIS FED. AID PROJECT